

Type - *Tipo*: PTX

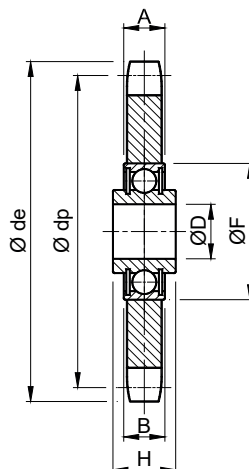
USE Stainless steel idler sprockets
Pignoni tendicatena INOX

MATERIALS Stainless Steel
USE Idlersprocket consists of a stainless steel crown, installed on stainless steel bearings.

They are used for manual chain tensioning or for the realization of gear transmissions.

MATERIALI Acciaio INOX.
IMPIEGO Il pignone è costituito da una corona in acciaio INOX, montata su cuscinetti INOX a base maggiorata.

Sono utilizzati per tensionamenti manuali o per la realizzazione di rinvii.

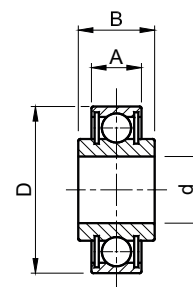


Type <i>Tipo</i>	Cod. N°	Chain <i>Catena</i>	Z	Ø de	Ø dp	A	B	Ø D	Ø F	H	Weight / <i>Peso</i> [kg]
PTX 1-21 INOX	TB001827	3/8" x 7/32"	21	68.0	63.90	5.3	12	16 ^{+0.26} / _{+0.13}	40	18.3	0.17
PTX 2-16 INOX	TB001830	1/2" x 5/16"	16	69.5	65.10	7.2	12	16 ^{+0.26} / _{+0.13}	40	18.3	0.18
PTX 2-18 INOX	TB001832	1/2" x 5/16"	18	77.8	73.14	7.2	12	16 ^{+0.26} / _{+0.13}	40	18.3	0.23
PTX 3-17 INOX	TB001836	5/8" x 3/8"	17	93.0	86.39	9.1	12	16 ^{+0.26} / _{+0.13}	40	18.3	0.36
PTX 4-15 INOX	TB001839	3/4" x 7/16"	15	99.8	91.63	11.1	12	16 ^{+0.26} / _{+0.13}	40	18.3	0.46



STAINLESS STEEL BALL BEARINGS - CUSCINETTI A SFERA INOX

Type / <i>Tipo</i>	Cod. N°	d	D	A	B	Weight <i>Peso in</i> [kg]
203 KRR AH 02 INOX	BU008536	16 ^{+0.13} / _{+0.26}	40	12	18.3	0.082



**APPLICATION EXAMPLES
ESEMPI DI APPLICAZIONE**

