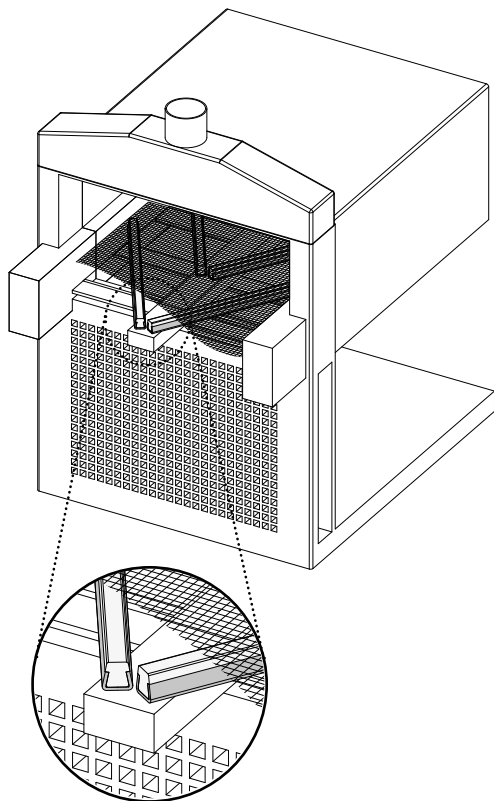


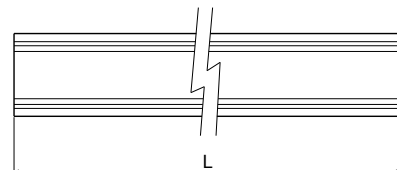
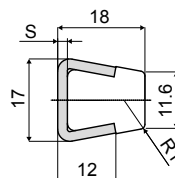
Guide rail for high temperatures (with metal profile) - Part. T77
Guida piatta per alte temperature (con profilo metallico) - Part. T77

Application example
Esempio di applicazione



Temperatura di esercizio continuo
FINO A 260°C

Operating temperatures
UP TO 260°C



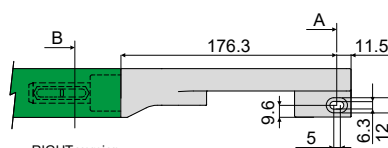
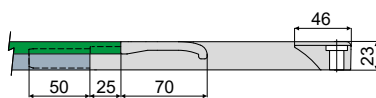
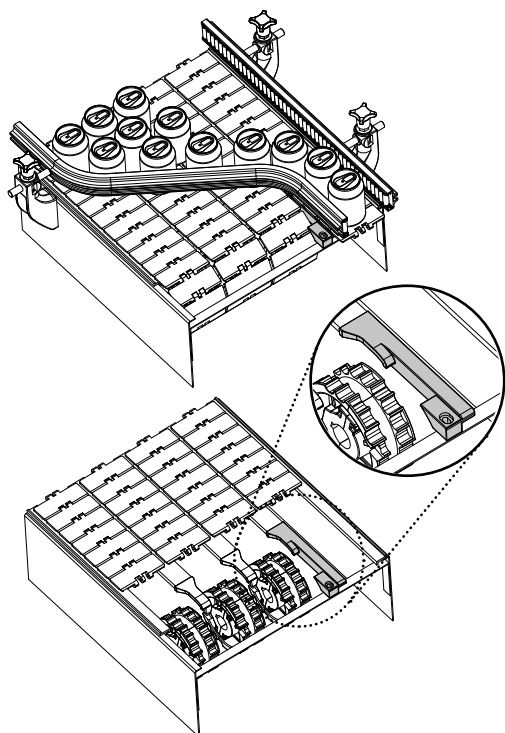
Type/Tipo	Code/Codice	S	L
T77A	CPB00496	1,5	3 Mt.
T77B	CPC00497	2	3 Mt.

UK MATERIALS: Guide profile in PTFE (Teflon) natural colour; metal profile in stainless steel AISI 304. **FEATURES:** To be used in every application where the resistance to the high temperatures is needed; for example: ovens, fryers, filling areas with high temperature, steam rooms, kitchens etc. Supplied in 3 meters lengths.

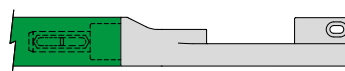
IT MATERIALI: Profilo guida in PTFE (Teflon) naturale; profilo metallico in acciaio inox AISI 304. **CARATTERISTICHE:** Utilizzabile in ogni contesto in cui sia richiesta la resistenza all'aumento delle temperature; es: forni, friggitorici, zone di riempimento a caldo, camere a vapore, cucine, ecc. Fornito in barre da 3 Mt.

Chain inlet guide shoe - Part. Q44
Pattino per guida catena - Part. Q44

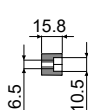
Application example
Esempio di applicazione



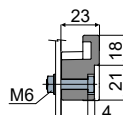
RIGHT version
Versione DESTRA



LEFT version
Versione SINISTRA



Section B
Sezione B



Section A
Sezione A



Forprofile in stainless steel
Per profili in acciaio inox

Version Versione	Type Tipo	Code Codice
Right Destra	Q44A	CPB00582
Left Sinistra	Q44B	CPB00583

Forprofile in aluminium
Per profili in alluminio

Version Versione	Type Tipo	Code Codice
Right Destra	Q44C	CPB00010
Left Sinistra	Q44D	CPB00011

UK MATERIALS: Shoe in black polyamide. **FEATURES:** To be assembled near to the idler wheels to drive the chain on the transport guides: Part.T81, T84, C13 (excluding versions with aluminium metal profile).

IT MATERIALI: Pattino in poliammide colore nero. **CARATTERISTICHE:** Da applicare in corrispondenza delle ruote di rinvio per convogliare la catena sulle guide di trasporto per Part.T81, T84, C13 (escluse le versioni con profilo metallico in alluminio).