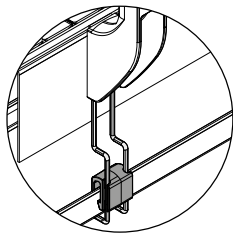
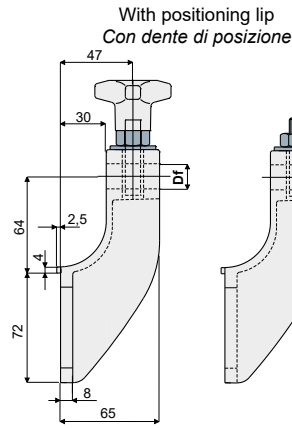
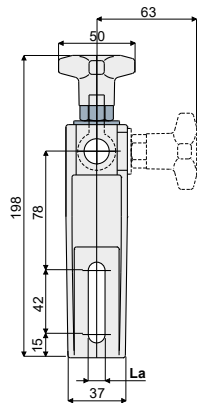


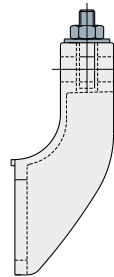
**Guide rail bracket - Part. D13**  
**Supporto portaguida - Part. D13**



**Presetting for drip tray support**  
*Predisposizione per sostegno raccogliore*

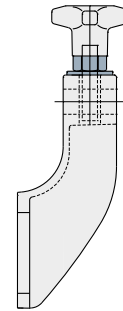


With knob  
*Con volantino*

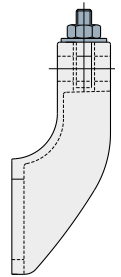


With nut  
*Con dado*

Without positioning lip  
*Senza dente di posizione*



With knob  
*Con volantino*



With nut  
*Con dado*

**With positioning lip / Con dente di posizione**

| La (9 mm)                       |                             | La (11 mm)                      |                             |  |                       |                     |                       | Df   |
|---------------------------------|-----------------------------|---------------------------------|-----------------------------|--|-----------------------|---------------------|-----------------------|------|
| With knob<br><i>Con pomello</i> | With nut<br><i>Con dado</i> | With knob<br><i>Con pomello</i> | With nut<br><i>Con dado</i> | Bore for pin<br><i>Foro per perno da</i> |                       |                     |                       |      |
| Type<br><i>Tipo</i>             | Code<br><i>Codice</i>       | Type<br><i>Tipo</i>             | Code<br><i>Codice</i>       | Type<br><i>Tipo</i>                      | Code<br><i>Codice</i> | Type<br><i>Tipo</i> | Code<br><i>Codice</i> | (mm) |
| D13A                            | CP000093                    | D13D                            | CP000096                    | D13G                                     | CP000099              | D13L                | CP000102              | 12   |
| D13B                            | CP000094                    | D13E                            | CP000097                    | D13H                                     | CP000100              | D13M                | CP000103              | 14   |
| D13C                            | CP000095                    | D13F                            | CP000098                    | D13I                                     | CP000101              | D13N                | CP000104              | 16   |

**Without positioning lip / Senza dente di posizione**

| La (9 mm)                       |                             | La (11 mm)                      |                             |  |                       |                     |                       | Df   |
|---------------------------------|-----------------------------|---------------------------------|-----------------------------|--|-----------------------|---------------------|-----------------------|------|
| With knob<br><i>Con pomello</i> | With nut<br><i>Con dado</i> | With knob<br><i>Con pomello</i> | With nut<br><i>Con dado</i> | Bore for pin<br><i>Foro per perno da</i> |                       |                     |                       |      |
| Type<br><i>Tipo</i>             | Code<br><i>Codice</i>       | Type<br><i>Tipo</i>             | Code<br><i>Codice</i>       | Type<br><i>Tipo</i>                      | Code<br><i>Codice</i> | Type<br><i>Tipo</i> | Code<br><i>Codice</i> | (mm) |
| D13O                            | CPA00093                    | D13R                            | CPA00096                    | D13U                                     | CPA00099              | D13V                | CPA00102              | 12   |
| D13P                            | CPA00094                    | D13S                            | CPA00097                    | D13X                                     | CPA00100              | D13Y                | CPA00103              | 14   |
| D13Q                            | CPA00095                    | D13T                            | CPA00098                    | D13Z                                     | CPA00101              | D13Y                | CPA00104              | 16   |

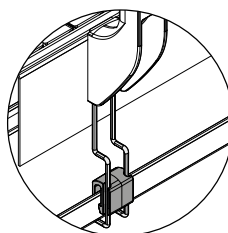
**MATERIALS:** Bracket and knob made of reinforced polyamide black colour; hexagonal insert made of nickel plated brass; eyebolt, nut and washer made of stainless steel AISI 304.

**FEATURES:** Max tightening torque 4 Kg·m.

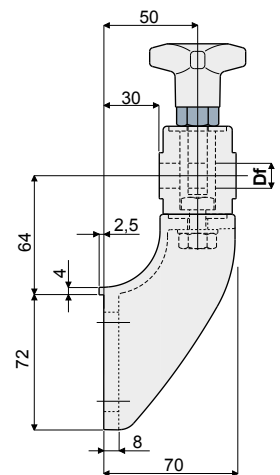
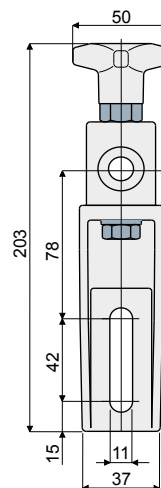
**MATERIALI:** Supporto e volantino in poliammide rinforzata colore nero; inserto esagonale in ottone nichelato; tirante ad occhio, dado e rosetta in acciaio inox AISI 304.

**CARATTERISTICHE:** Coppia massima di serraggio 4 Kg·m.

**Guide rail bracket (with adjustable head) - Part. D14**  
**Supporto portaguida (con testina tipo orientabile) - Part. D14**



**Presetting for drip tray support**  
*Predisposizione per sostegno raccogliore*



Type/Tipo

Code/Codice

Df  
Bore for pin of  
*Foro per perno da*  
(mm)

|      |          |    |
|------|----------|----|
| D14A | CP000105 | 12 |
| D14B | CP000106 | 14 |
| D14C | CP000107 | 16 |

**MATERIALS:** Bracket and knob made of reinforced polyamide black colour; hexagonal insert made of nickel plated brass; eyebolt, nut and washer made of stainless steel AISI 304.

**FEATURES:** Max tightening torque 4 Kg·m.

**MATERIALI:** Supporto e volantino in poliammide rinforzata colore nero; inserto esagonale in ottone nichelato; tirante ad occhio, dado e rosetta in acciaio inox AISI 304.

**CARATTERISTICHE:** Coppia massima di serraggio 4 Kg·m.