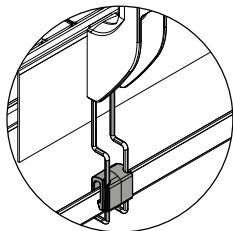
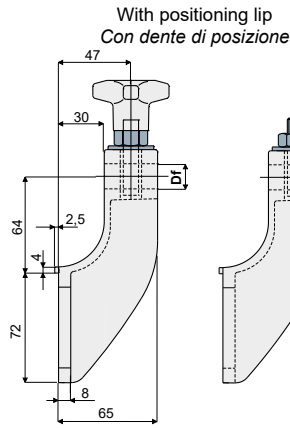
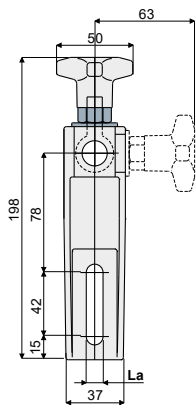


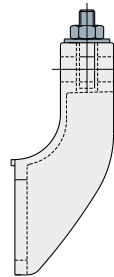
**Guide rail bracket - Part. D13**  
**Supporto portaguida - Part. D13**



**Presetting for drip tray support**  
*Predisposizione per sostegno raccogliore*

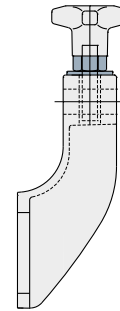


With knob  
*Con volantino*

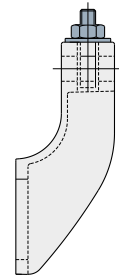


With nut  
*Con dado*

Without positioning lip  
*Senza dente di posizione*



With knob  
*Con volantino*



With nut  
*Con dado*

**With positioning lip / Con dente di posizione**

La (9 mm)		La (11 mm)						Df
With knob <i>Con pomello</i>	With nut <i>Con dado</i>	With knob <i>Con pomello</i>	With nut <i>Con dado</i>	Bore for pin <i>Foro per perno da</i>				
Type <i>Tipo</i>	Code <i>Codice</i>	Type <i>Tipo</i>	Code <i>Codice</i>	Type <i>Tipo</i>	Code <i>Codice</i>	Type <i>Tipo</i>	Code <i>Codice</i>	(mm)
D13A	CP000093	D13D	CP000096	D13G	CP000099	D13L	CP000102	12
D13B	CP000094	D13E	CP000097	D13H	CP000100	D13M	CP000103	14
D13C	CP000095	D13F	CP000098	D13I	CP000101	D13N	CP000104	16

**Without positioning lip / Senza dente di posizione**

La (9 mm)		La (11 mm)						Df
With knob <i>Con pomello</i>	With nut <i>Con dado</i>	With knob <i>Con pomello</i>	With nut <i>Con dado</i>	Bore for pin <i>Foro per perno da</i>				
Type <i>Tipo</i>	Code <i>Codice</i>	Type <i>Tipo</i>	Code <i>Codice</i>	Type <i>Tipo</i>	Code <i>Codice</i>	Type <i>Tipo</i>	Code <i>Codice</i>	(mm)
D13O	CPA00093	D13R	CPA00096	D13U	CPA00099	D13V	CPA00102	12
D13P	CPA00094	D13S	CPA00097	D13W	CPA00100	D13X	CPA00103	14
D13Q	CPA00095	D13T	CPA00098	D13Z	CPA00101	D13Y	CPA00104	16

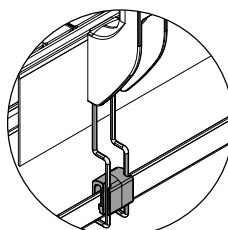
**MATERIALS:** Bracket and knob made of reinforced polyamide black colour; hexagonal insert made of nickel plated brass; eyebolt, nut and washer made of stainless steel AISI 304.

**FEATURES:** Max tightening torque 4 Kg.m.

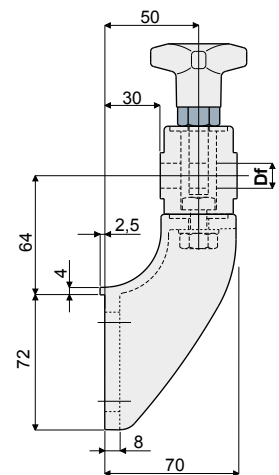
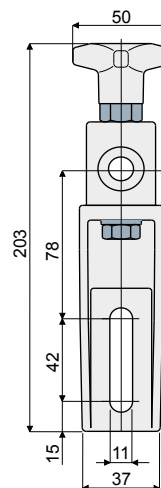
**MATERIALI:** Supporto e volantino in poliammide rinforzata colore nero; inserto esagonale in ottone nichelato; tirante ad occhio, dado e rosetta in acciaio inox AISI 304.

**CARATTERISTICHE:** Coppia massima di serraggio 4 Kg.m.

**Guide rail bracket (with adjustable head) - Part. D14**  
**Supporto portaguida (con testina tipo orientabile) - Part. D14**



**Presetting for drip tray support**  
*Predisposizione per sostegno raccogliore*



**Type/Tipo**

**Code/Codice**

**Df**  
**Bore for pin of**  
**Foro per perno da**  
**(mm)**

D14A	CP000105	12
D14B	CP000106	14
D14C	CP000107	16

**MATERIALS:** Bracket and knob made of reinforced polyamide black colour; hexagonal insert made of nickel plated brass; eyebolt, nut and washer made of stainless steel AISI 304.

**FEATURES:** Max tightening torque 4 Kg.m.

**MATERIALI:** Supporto e volantino in poliammide rinforzata colore nero; inserto esagonale in ottone nichelato; tirante ad occhio, dado e rosetta in acciaio inox AISI 304.

**CARATTERISTICHE:** Coppia massima di serraggio 4 Kg.m.