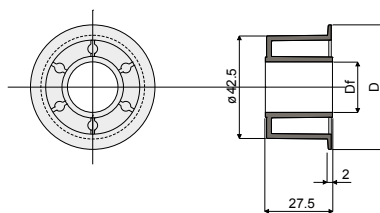
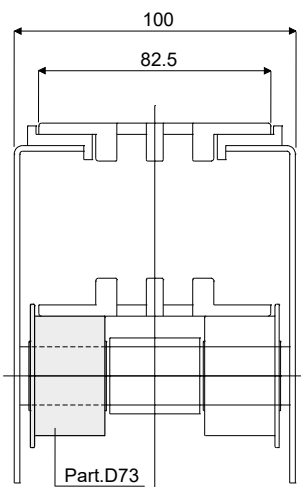


Roller for chain return (with flange) - Part. D73
Rullino per ritorno catene (tipo con flangia) - Part. D73

Application example
Esempio di applicazione



D = 51		D = 55		Df Bore for pin of Foro per perno da (mm)
Type/Tipo	Code/Codice	Type/Tipo	Code/Codice	
D73A	CP000392	D73E	CPA00392	12
D73B	CP000393	D73F	CPA00393	16
D73C	CP000394	D73G	CPA00394	18
D73D	CP000395	D73H	CPA00395	20

MATERIALS: Roller made of reinforced polyamide, black colour.

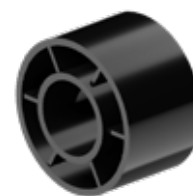
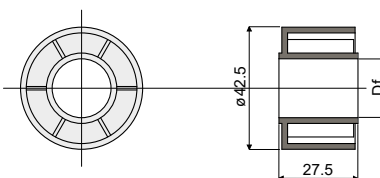
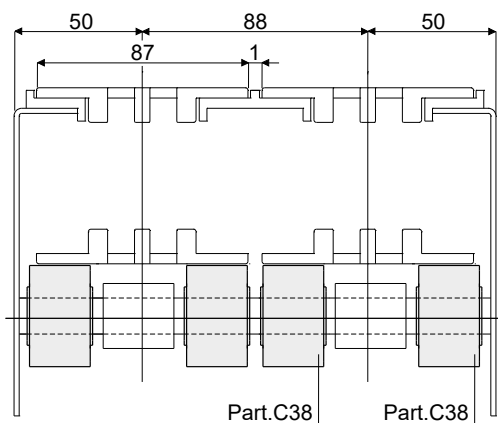
FEATURES: To be assembled in the chain return.

MATERIALI: Rullino in poliammide colore nero.

CARATTERISTICHE: Da applicare nei tratti di ritorno delle catene.

Roller for chain return (without central flange) - Part. C38
Rullino per ritorno catene (tipo senza flangia) - Part. C38

Application example
Esempio di applicazione



Type/Tipo	Code/Codice	Df Bore for pin of Foro per perno da (mm)
C38A	CPB00004	12
C38B	CPB00005	16
C38C	CPB00006	18
C38D	CPB00007	20

MATERIALS: Roller made of reinforced polyamide, black colour.

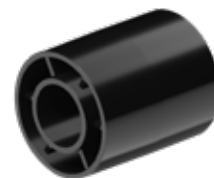
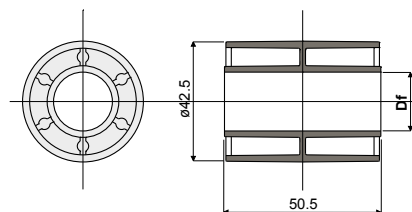
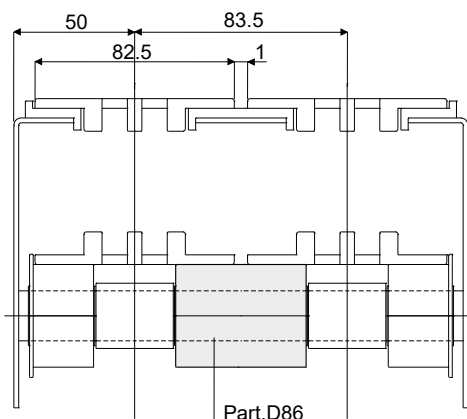
FEATURES: To be assembled in the chain return.

MATERIALI: Rullino in poliammide colore nero.

CARATTERISTICHE: Da applicare nei tratti di ritorno delle catene.

Double roller for chain return (without central flange) - Part. D86
Rullino doppio per ritorno catene (tipo senza flangia) - Part. D86

Application example
Esempio di applicazione



Type/Tipo	Code/Codice	Df Bore for pin of Foro per perno da (mm)
D86A	CP000404	12
D86B	CP000405	16
D86C	CP000406	18
D86D	CP000407	20

MATERIALS: Roller made of reinforced polyamide, black colour.

FEATURES: To be assembled in the chain return.

MATERIALI: Rullino in poliammide colore nero.

CARATTERISTICHE: Da applicare nei tratti di ritorno delle catene.