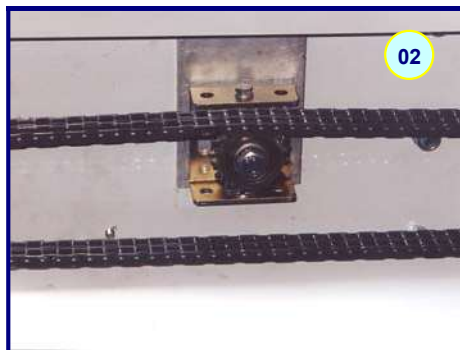
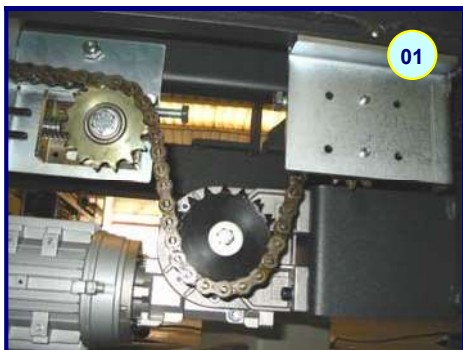


**Tabella di scelta KIT / KIT selection table**

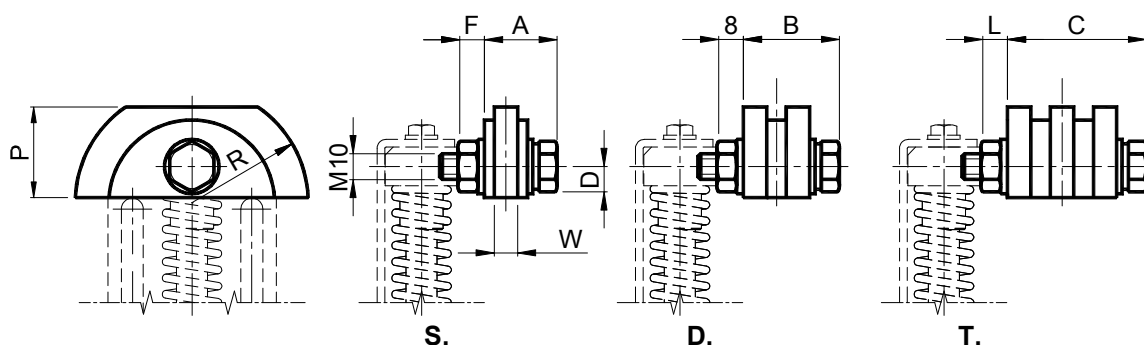
Catena-Chain-DIN 8187		Tipo-Type						TAGLIA SIZE	Tipo-Type		Larghezza Max.cinghia MAX.belt width
ISO	Passo Pitch	VJ	LJ	OVJ	RJ	NJ	KJ		PJ	UJ	
		 Pag.95	 Pag.96	 Pag.97	 Pag.98	 Pag.99	 Pag.100	 Pag. 92-93	 Pag.101	 Pag.101	
05-B1	8mm	VJ10-0S	LJ10-0S		RJ10-0S			10	PJ1	UJ1	30
06-B1	3/8" x 7/32"	VJ10-1S	LJ10-1S	OVJ10-1 S	RJ10-1S			10			
06-B1	3/8" x 7/32"					NJ20-1S	KJ20-1S	20			
06-B1	3/8" x 7/32"					NJ30-1S	KJ30-1S	30			
08-B1	1/2" x 5/16"	VJ20-2S	LJ20-2S	OVJ20-2 S	RJ20-2S			20	PJ2/3	UJ2/3	40
08-B1	1/2" x 5/16"	VJ30-2S	LJ30-2S	OVJ30-2 S	RJ30-2S	NJ30-2S	KJ30-2S	30	PJ2/3	UJ2/3	40
10-B1	5/8" x 3/8"	VJ30-3S	LJ30-3S	OVJ30-3 S	RJ30-3S	NJ30-3S		30			
10-B1	5/8" x 3/8"					NJ40-3S	KJ40-3S	40	PJ4	UJ4	55
12-B1	3/4" x 7/16"	VJ30-4S	LJ30-4S	OVJ30-4 S	RJ30-4S	NJ30-4S		30			
12-B1	3/4" x 7/16"	VJ40-4S	LJ40-4S	OVJ40-4 S	RJ40-4S	NJ40-4S	KJ40-4S	40			
16-B1	1" x 17.02mm	VJ40-5S	LJ40-5S		RJ40-5S	NJ40-5S	KJ40-5S	40			
05-B2	8mm	VJ10-0D	LJ10-0D		RJ10-0D			10			
06-B2	3/8" x 7/32"	VJ10-1D	LJ10-1D	OVJ10-1 D	RJ10-1D			10			
06-B2	3/8" x 7/32"					NJ20-1D	KJ20-1D	20			
06-B2	3/8" x 7/32"					NJ30-1D	KJ30-1D	30			
08-B2	1/2" x 5/16"	VJ20-2D	LJ20-2D	OVJ20-2 D	RJ20-2D			20			
08-B2	1/2" x 5/16"	VJ30-2D	LJ30-2D	OVJ30-2 D	RJ30-2D	NJ30-2D	KJ30-2D	30			
10-B2	5/8" x 3/8"	VJ30-3D	LJ30-3D	OVJ30-3 D	RJ30-3D	NJ30-3D		30			
10-B2	5/8" x 3/8"					NJ40-3D	KJ40-3D	40			
12-B2	3/4" x 7/16"	VJ30-4D	LJ30-4D	OVJ30-4 D	RJ30-4D			30			
12-B2	3/4" x 7/16"	VJ40-4D	LJ40-4D	OVJ40-4 D	RJ40-4D	NJ40-4D	KJ40-4D	40			
06-B3	3/8" x 7/32"	VJ20-1T	LJ20-1T	OVJ20-1 T	RJ20-1T			20			
06-B3	3/8" x 7/32"						KJ30-	30			
08-B3	1/2" x 5/16"	VJ30-2T	LJ30-2T	OVJ30-2 T	RJ30-2T			30			
08-B3	1/2" x 5/16"					NJ40-2T	KJ40-	40			

**Foto applicazioni / Application photos:**



**KIT per tendicatena / KIT for chain tensioners**

Pattino in polietilene - Tipo: LJ / Polyethylene sliding block - Type: LJ



**MATERIALI** Pattino in polietilene ad alta densità molecolare. Bulloneria in acciaio zincato.  
**IMPIEGO** Pattino L a profilo semicircolare indicato per grandi interassi o per montaggi vicini al pignone.  
 Velocità di lavoro ≤20m/min.  
 Temperatura di lavoro ≤70°C.

**MATERIALS** Polyethylene sliding block, high molecular density. Bolts and nuts made of galvanized steel.  
**USE** Semi-circular sliding block L suitable for large interaxis or for installation close to the sprocket.  
 Operating speed ≤20m/min.  
 Operating temperature ≤70°C.



Tipo Type	S Cod. N°	D Cod. N°	T Cod. N°	Catena Chain	Taglia Size	A	B	C	D	F	H	L	P	R	W	Peso Weight in kg		
																S.	D.	T.
LJ 10-0	JE010230	JE010250		8 mm	10	21	23		10	10	8		30	35	2.5	0.09	0.10	
LJ 10-1	JE010231	JE010252		3/8" x 7/32"	10	21	29		10	10	8		30	35	5	0.09	0.10	
LJ 20-1			JE010270	3/8" x 7/32"	20			37	10			8	30	35	5			0.13
LJ 20-2	JE010233	JE010254		1/2" x 5/16"	20	25	32		10	10	8		30	35	7	0.10	0.10	
LJ 30-2	JE010233	JE010254	JE010272	1/2" x 5/16"	30	25	32	46	10	10	8	10	30	35	7	0.10	0.10	0.14
LJ 30-3	JE010236	JE010257		5/8" x 3/8"	30	28	37		12	8	8		37	45	9	0.12	0.12	
LJ 30-4	JE010238	JE010259		3/4" x 7/16"	30	29	42		12	12	8		37	45	11	0.12	0.12	
LJ 40-4	JE010238	JE010259		3/4" x 7/16"	40	29	42		12	12	8		37	45	11	0.15	0.15	
LJ 40-5	JE010241			1" x 17.02	40	29			20	12			46	55	16	0.20	0.20	

Esempio di applicazione / Application Example

