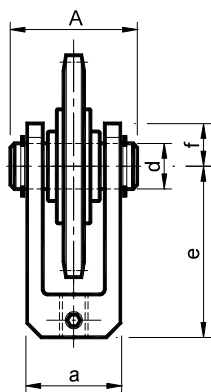
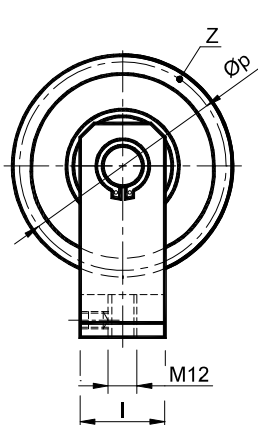


Tabella di scelta KIT / KIT selection table

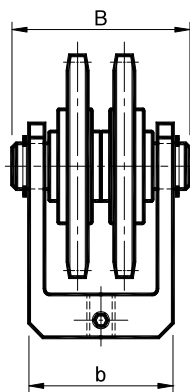
Catena - Chain (DIN 8187)		Tipo - Type		Taglia - Size	Tipo - Type		Larghezza max. cinghia [mm] Max belt width [mm]
ISO	Passo Pitch	2V 	2RR 		2RAU 	2RAP 	
		Pag.55	Pag.56	Pag. 43 46 47	Pag.57	Pag.57	
16-B1	1" x 17.02mm	2V 40-5 S	2RR 40-5 S	40	2RAU 4	2RAP 4	55
16-B1	1" x 17.02mm	2V 40-5 S	2RR 50-5 S	50			
20-B1	1"1/4 x 3/4"	2V 50-6 S	2RR 50-6 S	50	2RAU 5	2RAP 5	85
20-B1	1"1/4 x 3/4"	2V 60-6 S	2RR 60-6 S	60	2RAU 5	2RAP 5	85
24-B1	1"1/2 x 1"	2V 60-7 S	2RR 60-7 S	60	2RAU 6	2RAP 6	130
24-B1	1"1/2 x 1"	2V 70-7 S	2RR 70-7 S	70	2RAU 6	2RAP 6	130
28-B1	1"3/4 x 1"1/4	2V 60-8 S	2RR 60-8 S	60			
28-B1	1"3/4 x 1"1/4	2V 70-8 S	2RR 70-8 S	70			
32-B1	2" x 1"1/4	2V 70-9 S	2RR 70-9 S	70			
32-B1	2" x 1"1/4	2V 80-9 S	2RR 80-9 S	80			
16-B2	1" x 17.02mm	2V 50-5 D	2RR 50-5 D	50			
16-B2	1" x 17.02mm	2V 60-5 D	2RR 60-5 D	60			
20-B2	1"1/4 x 3/4"	2V 60-6 D	2RR 60-6 D	60			
20-B2	1"1/4 x 3/4"	2V 70-6 D	2RR 70-7 D	70			
24-B2	1"1/2 x 1"	2V 70-7 D	2RR 70-7 D	70			
24-B2	1"1/2 x 1"	2V 80-7 D	2RR 80-7 D	80			
28-B2	1"3/4 x 1"1/4	2V 80-8 D	2RR 80-8 D	80			
28-B2	1"3/4 x 1"1/4	2V 90-8 D	2RR 90-8 D	90			
32-B2	2" x 1"1/4	2V 90-9 D	2RR 70-9 D	90			
16-B3	1" x 17.02mm	2V 60-5 T		60			
16-B3	1" x 17.02mm	2V 70-5 T		70			
20-B3	1"1/4 x 3/4"	2V 70-6 T		70			
20-B3	1"1/4 x 3/4"	2V 80-6 T		80			
24-B3	1"1/2 x 1"	2V 90-7 T		90			



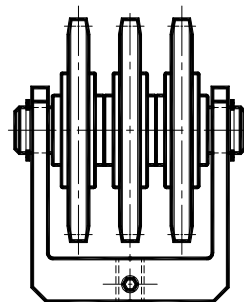
KIT per tendicatena / KIT for chain tensioners
Pignone tendicatena in acciaio su forcella – Tipo: 2RR
Sprocket made of steel on the fork – Type: 2RR



S.



D.



T.

Solo su richiesta
Only on request



MATERIALI La forcella in acciaio o in alluminio. Il cuscinetto, la corona dentata e il perno sono in acciaio.

TRATTAMENTI Forcella in acciaio verniciato o in alluminio sabbiato. Corona e perno in acciaio zincato.

IMPIEGO Pignone folle su forcella. Il pignone è costituito da una corona in acciaio, montata su cuscinetti con base maggiorata nazionale.

A richiesta si possono fornire cuscinetti INA. I kit per catene triple, ASA, metrici o non unificati vengono eseguiti solo su richiesta.

Velocità di lavoro ≤60 m/min.

Temperatura di lavoro ≤100°C.

MATERIALS The fork is made of steel or aluminium. The bearing, the toothed crown and the pin are made of steel.

TREATMENTS Fork made of sandblasted aluminium or painted steel. Crown and pin made of galvanized steel.

USE Idle pin on the fork. The sprocket consists of a steel crown, installed on national enlarged bearings. On demand INA bearings can be supplied.

The KIT for triple chains, ASA, metric or not standard are made only on request.

Operating speed ≤60 m/min.

Operating temperature ≤100°C.

Tipo Type	Cod. N° S.	Cod. N° D.	Catena Chain	a	A	b	B	d	e	f	l	Øp	Z	Peso Weight in kg	
														S.	D.
2RR 5	ΔTB001960	○TB001980	1" x 17.02mm	35	45	67	78	20	77.5	17.5	40	98.14	12	1.00	2.33
2RR 6	○TB001963	○TB001983	1"1/4 x 3/4"	40	50	80	88	20	100	25	50	132.65	13	2.90	4.56
2RR 7	○TB001966	○TB001986	1"1/2 x 1"	50	60	98	110	20	100	25	50	135.21	11	3.30	5.40
2RR 8	○TB001969	○TB001989	1"3/4 x 1"1/4	55	65	114	125	30	115	25	50	157.77	11	5.00	10.00
2RR 9	○TB001972	○TB001992	2" x 1"1/4	55	65	114	125	30	125	25	50	180.34	11	7.00	14.00

Δ: Forcella in fusione di alluminio / Fork made of light metal die cast

○: Forcella in acciaio saldato / Fork made of welded steel