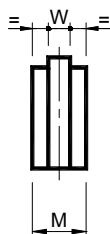
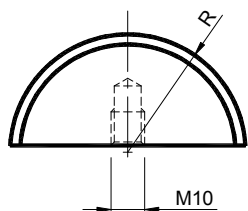


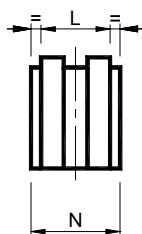
**Tabella di scelta KIT / KIT selection table**

Catena - Chain (DIN 8187)		Tipo - Type				Taglia - Size	Tipo - Type		Larghezza max. cinghia [mm] Max belt width [mm]
ISO	Passo Pitch	V	L	RF	RR		RAU	RAP	
		 Pag.49	 Pag.50	 Pag.51	 Pag.52		 Pag.53	 Pag.53	
05-B1	8 mm	V10-0 S	L10-0 S	RF10-0 S	/	10			
06-B1	3/8" x 7/32"	V10-1 S	L10-1 S	RF10-1 S	RR10-1 S	10	RAU 1	RAP 1	30
06-B1	3/8" x 7/32"	V20-1 S	L20-1 S	RF20-1 S	RR20-1 S	20	RAU 1	RAP 1	30
08-B1	1/2" x 5/16"	V20-2 S	L20-2 S	RF20-2 S	RR20-2 S	20			
08-B1	1/2" x 5/16"	V30-2 S	L30-2 S	RF30-2 S	RR30-2 S	30	RAU 2/3	RAP 2/3	40
10-B1	5/8" x 3/8"	V30-3 S	L30-3 S	RF30-3 S	RR30-3 S	30			
10-B1	5/8" x 3/8"	V40-3 S	L40-3 S	RF40-3 S	RR40-3 S	40	RAU 2/3	RAP 2/3	40
12-B1	3/4" x 7/16"	V40-4 S	L40-4 S	RF40-4 S	RR40-4 S	40			
12-B1	3/4" x 7/16"	V50-4 S	L50-4 S	RF50-4 S	RR50-4 S	50			
16-B1	1" x 17.02mm	V50-5 S	L50-5 S	RF50-5 S	RR50-5 S	50	RAU 4-10	RAP 4-10	55
16-B1	1" x 17.02mm	V60-5 S	L60-5 S	RF60-5 S	RR60-5 S	60	RAU 4-10	RAP 4-10	55
20-B1	1"1/4 x 3/4"	V60-6 S	L60-6 S	RF60-6 S	/	60			
20-B1	1"1/4 x 3/4"	V70-6 S	L70-6 S	RF70-6 S	/	70	RAU 5-10	RAP 5-10	85
24-B1	1"1/2 x 1"	V70-7 S	L70-7 S	RF70-7 S	/	70			
24-B1	1"1/2 x 1"	V80-7 S	L80-7 S	RF80-7 S	/	80	RAU 6-10	RAP 6-10	130
05-B2	8 mm	V20-0 D	L20-0 D	RF20-0 D	/	20			
06-B2	3/8" x 7/32"	V20-1 D	L20-1 D	RF20-1 D	RR20-1 D	20			
06-B2	3/8" x 7/32"	V30-1 D	L30-1 D	RF30-1 D	RR30-1 D	30			
08-B2	1/2" x 5/16"	V40-2 D	L40-2 D	RF40-2 D	RR40-2 D	40			
10-B2	5/8" x 3/8"	V40-3 D	L40-3 D	RF40-3 D	RR40-3 D	40			
10-B2	5/8" x 3/8"	V50-3 D	L50-3 D	RF50-3 D	RR50-3 D	50			
12-B2	3/4" x 7/16"	V50-4 D	L50-4 D	RF50-4 D	RR50-4 D	50			
12-B2	3/4" x 7/16"	V60-4 D	L60-4 D	RF60-4 D	RR60-4 D	60			
16-B2	1" x 17.02mm	V70-5 D	L70-5 D	RF70-5 D	RR70-5 D	70			
06-B3	3/8" x 7/32"	V30-1 T	L30-1 T	RF30-1 T	/	30			
06-B3	3/8" x 7/32"	V40-1 T	L40-1 T	RF40-1 T	/	40			
08-B3	1/2" x 5/16"	V40-2 T	L40-2 T	RF40-2 T	/	40			
08-B3	1/2" x 5/16"	V50-2 T	L50-2 T	RF50-2 T	/	50			
10-B3	5/8" x 3/8"	V50-3 T	L50-3 T	RF50-3 T	/	50			
10-B3	5/8" x 3/8"	V60-3 T	L60-3 T	RF60-3 T	/	60			
12-B3	3/4" x 7/16"	V60-4 T	L60-4 T	RF60-4 T	/	60			
12-B3	3/4" x 7/16"	V70-4 T	L70-4 T	RF70-4 T	/	70			
16-B3	1" x 17.02mm	V70-5 T	L70-5 T	/	/	70			
16-B3	1" x 17.02mm	V80-5 T	L80-5 T	/	/	80			

**KIT per tendicatena / KIT for chain tensioners**  
Pattino in polietilene – Tipo: V / Polyethylene sliding block – Type: V



S.



D.



T.

**MATERIALI** Pattino in polietilene ad alta densità molecolare.

**IMPIEGO** Profilo semicircolare indicato per piccoli interassi o per montaggi vicino al pignone motore.  
Velocità di lavoro ≤20 m/min.  
Temperatura di lavoro ≤70°C.

**MATERIALS** Sliding block made of polyethylene, high molecular density.

**USE** Semi-circular profile suitable for reduced interaxis or for installation close to the pinion.  
Operating speed ≤20 m/min.  
Operating temperature ≤70° C.

Tipo Type	S Cod. N°	D Cod. N°	T Cod. N°	Catena Chain	R	W	M	N	O	L	Peso Weight in kg		
											S.	D.	T.
V0	TB001060	TB001070		8mm	35	2.5	18	18	/	8	0.03	0.03	
V1	TB001061	TB001071	TB001080	3/8" x 7/32"	35	5	18	18	25	15	0.03	0.03	0.05
V2	TB001062	TB001072	TB001081	1/2" x 5/16"	35	7	18	21	34	20	0.03	0.04	0.06
V3	TB001063	TB001073	TB001082	5/8" x 3/8"	45	9	18	25	42	25	0.05	0.07	0.12
V4	TB001064	TB001074	TB001083	3/4" x 7/16"	45	11	18	30	49	30	0.05	0.08	0.14
V5	TB001065	TB001074	TB001084	1" x 17.02mm	55	16	18	47	79	47	0.08	0.19	0.31
V6	TB001066			1"1/4 x 3/4"	55	18	22	/	/	/	0.09		
V7	TB001066			1"1/2 x 1"	55	24	24	/	/	/	0.12		

Esempio di applicazione / Application example

