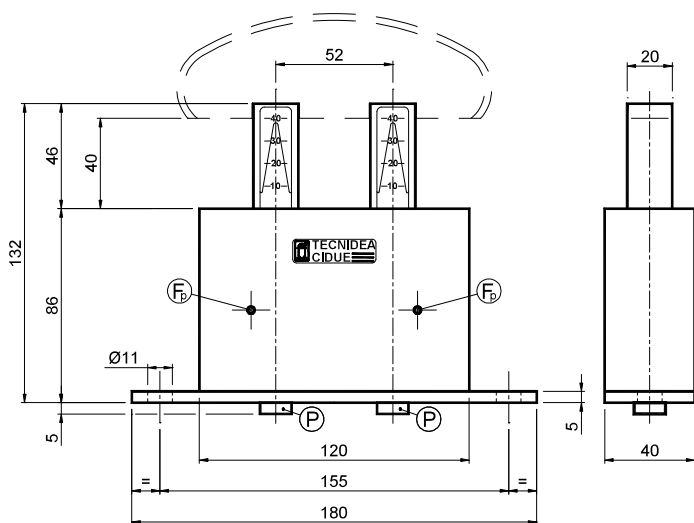


Elastic Elements – Type: **BB-Z** with galvanized steel springs / Type: **BB-X** with stainless steel springs  
 Elementi elastici – Tipo: **BB-Z** con molle in acciaio zincato / Tipo: **BB-X** con molle in acciaio inox



**MATERIALS** The external box is made of painted steel. The internal components are made by plastic. The bolts are in stainless steel. The inner springs can be in galvanized (BB-Z) or in stainless steel (BB-X).

**USE** Elastic chain-tensioner. All the articles are supplied with a preloading system. The maximum operating temperature is +80°C. The travel is 40 mm.

**MATERIALI** Il corpo esterno è in acciaio verniciato. I componenti interni sono in materiale plastico. Viteria in acciaio inox. Le molle all'interno sono in acciaio zincato (BB-Z) oppure in acciaio inox (BB-X).

**IMPIEGO** Elemento elastico per tendicatena. Tutti gli articoli vengono forniti con sistema di precarica. La temperatura massima di lavoro è +80°C. La corsa è di 40 mm.

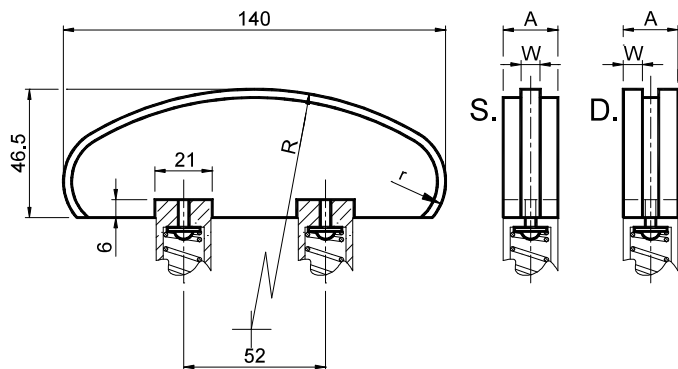
(F<sub>p</sub>) = Preloading hole / Foro precarica

(P) = Preloading pin / Piolo per precarica

| Type<br>Tipo | Cod. N°  | Newton    | Type<br>Tipo | Cod. N°  | Newton    | Weight<br>Peso<br>in [kg] |
|--------------|----------|-----------|--------------|----------|-----------|---------------------------|
| BB 10 Z      | BL010620 | 72 ÷ 158  | BB 10 X      | BL011630 | 70 ÷ 154  | 1,25                      |
| BB 20 Z      | BL010622 | 128 ÷ 284 | BB 20 X      | BL011632 | 126 ÷ 278 | 1,25                      |
| BB 30 Z      | BL010624 | 216 ÷ 478 | BB 30 X      | BL011634 | 210 ÷ 466 | 1,25                      |
| BB 40 Z      | BL010626 | 388 ÷ 860 | BB 40 X      | BL011636 | 342 ÷ 760 | 1,25                      |

### KIT for chain / KIT per catena

Pattino in polietilene – Tipo: **VG** / Polyethylene sliding block – Type: **VG**



**MATERIALS** High molecular density polyethylene.

**USE** Semi-circular lowered profile suggested for large distance between centres.

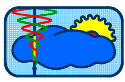
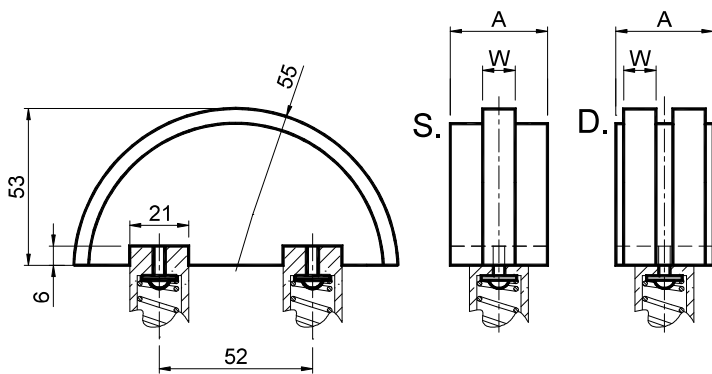
Operating speed ≤ 20 m/min.  
 Operating temperature ≤ 70°C.

**MATERIALI** Polietilene ad alta densità molecolare

**IMPIEGO** Profilo semicircolare indicato per grandi interassi.

Operating speed ≤ 20 m/min.  
 Temperatura di lavoro ≤ 70°C.

| Type<br>Tipo | Cod. N°  | Chain<br>Catena | A  | R   | W  | Weight<br>Peso<br>in [kg] | Type<br>Tipo | Cod. N°  | Chain<br>Catena | A  | R   | W  | Weight<br>Peso<br>in [kg] |
|--------------|----------|-----------------|----|-----|----|---------------------------|--------------|----------|-----------------|----|-----|----|---------------------------|
| VG 1 S       | BL010502 | 06-B1           | 20 | 120 | 5  | 0,07                      | VG 1 D       | BL010522 | 06-B2           | 20 | 120 | 5  | 0,08                      |
| VG 2 S       | BL010504 | 08-B1           | 20 | 120 | 7  | 0,08                      | VG 2 D       | BL010524 | 08-B2           | 20 | 120 | 7  | 0,08                      |
| VG 3 S       | BL010506 | 10-B1           | 20 | 140 | 9  | 0,10                      | VG 3 D       | BL010526 | 10-B2           | 25 | 140 | 9  | 0,12                      |
| VG 4 S       | BL010508 | 12-B1           | 20 | 140 | 11 | 0,12                      | VG 4 D       | BL010528 | 12-B2           | 30 | 140 | 11 | 0,25                      |
| VG 5 S       | BL010510 | 16-B1           | 25 | 160 | 16 | 0,20                      | VG 5 D       | BL010530 | 16-B2           | 48 | 160 | 16 | 0,50                      |
| VG 6 S       | BL010512 | 20-B1           | 25 | 160 | 18 | 0,20                      |              |          |                 |    |     |    |                           |
| VG 7 S       | BL010514 | 24-B1           | 30 | 160 | 24 | 0,35                      |              |          |                 |    |     |    |                           |
| VG 6 D       | BL010532 | 20-B2           | 55 | 160 | 18 | 1,30                      |              |          |                 |    |     |    |                           |
| VG 7 D       | BL010534 | 24-B2           | 70 | 160 | 24 | 1,40                      |              |          |                 |    |     |    |                           |

Polyethylene sliding block – Type: **BV** / Pattino in polietilene – Tipo: **BV**

| Tipo<br>Type  | Cod. N°  | Chain<br>Catena | A  | W  | Weight<br>Peso<br>in [kg] |
|---------------|----------|-----------------|----|----|---------------------------|
| <b>BV 4 S</b> | BL010684 | 12-B1           | 33 | 11 | 0,08                      |
| <b>BV 5 S</b> | BL010685 | 16-B1           | 33 | 16 | 0,08                      |
| <b>BV 2 D</b> | BL010692 | 08-B2           | 33 | 7  | 0,08                      |
| <b>BV 3 D</b> | BL010693 | 10-B2           | 33 | 9  | 0,09                      |
| <b>BV 4 D</b> | BL010694 | 12-B2           | 33 | 11 | 0,10                      |

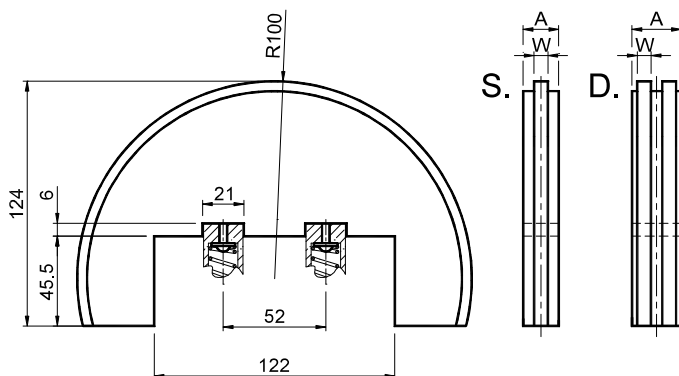
**UK MATERIALS** Sliding block made of high molecular density polyethylene. Stainless steel bolts.

**USE** Semi-circular profile suggested for small distance between centres.

Operating speed  $\leq 20$  m/min. Operating temperature  $\leq 70^\circ\text{C}$ .

**IT MATERIALI** Pattino in polietilene ad alta densità molecolare. Bulloneria in acciaio inox.

**IMPIEGO** Profilo semicircolare per trasmissioni con corto interasse. Velocità di lavoro  $\leq 20$  m/min. Temperatura di lavoro del pattino  $\leq 70^\circ\text{C}$ .

Polyethylene sliding block – Type: **BR** / Pattino in polietilene – Tipo: **BR**

| Tipo<br>Type  | Cod. N°  | Chain<br>Catena | A  | W  | Weight<br>Peso<br>in [kg] |
|---------------|----------|-----------------|----|----|---------------------------|
| <b>BR 4 S</b> | BL010744 | 12-B1           | 33 | 11 | 0,85                      |
| <b>BR 5 S</b> | BL010745 | 16-B1           | 33 | 16 | 0,86                      |
| <b>BR 6 S</b> | BL010746 | 20-B1           | 33 | 18 | 0,87                      |
| <b>BR 2 D</b> | BL010752 | 08-B2           | 33 | 7  | 0,85                      |
| <b>BR 3 D</b> | BL010753 | 10-B2           | 33 | 9  | 0,86                      |
| <b>BR 4 D</b> | BL010754 | 12-B2           | 33 | 11 | 0,88                      |

**UK MATERIALS** Sliding block made of high molecular density polyethylene. Stainless steel bolts.

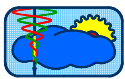
**USE** Round profile suggested for windings to  $180^\circ$ .

Operating speed  $\leq 20$  m/min. Operating temperature  $\leq 70^\circ\text{C}$ .

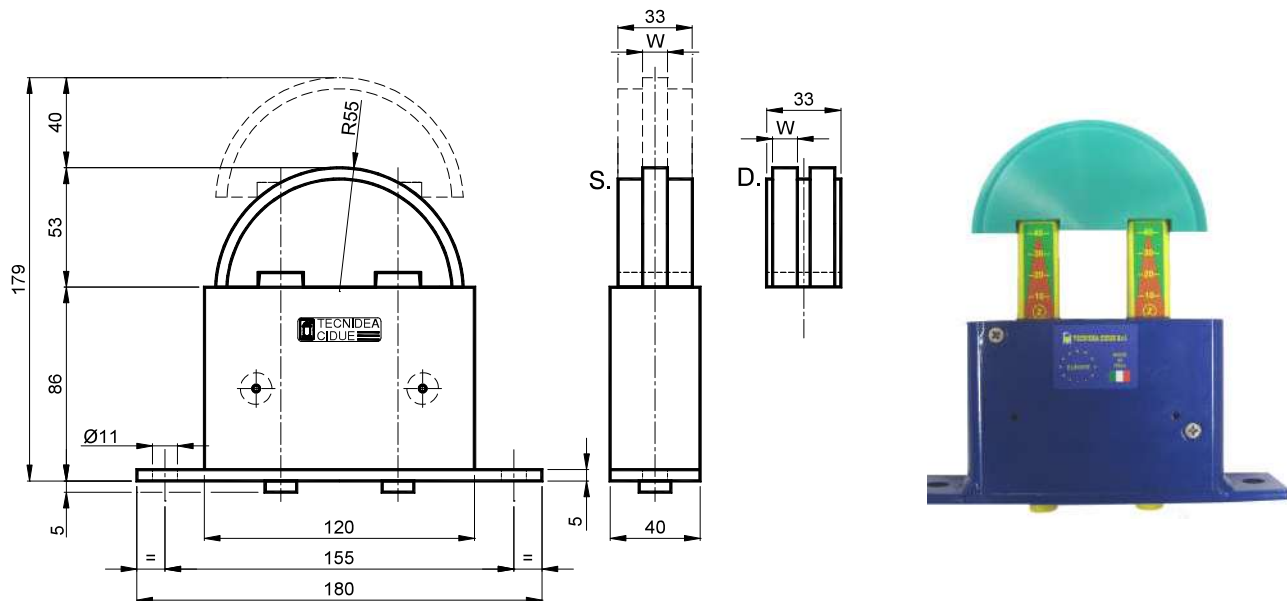
**IT MATERIALI** Pattino in polietilene ad alta densità molecolare. Bulloneria in acciaio inox.

**IMPIEGO** Profilo circolare per avvolgimenti a  $180^\circ$ .

Velocità di lavoro  $\leq 20$  m/min. Temperatura di lavoro del pattino  $\leq 70^\circ\text{C}$ .



Type: **BBZBV – BBXBV** / Tipo: **BBZBV – BBXBV**



Tensioners are made by BB elastic element and BV sliding block.  
 Tensioners BBZBV are available with galvanized springs and BBXBV types with stainless steel springs; load values are indicated on pag I-30.  
 The travel is 40 mm.

I tenditori sono composti dall'elemento elastico BB e la testa BV.  
 I tenditori BBZBV sono disponibili con molle in acciaio zincato ed i tipi BBXBV con molle in acciaio inox; i valori di carico sono riportati a pag I-30.  
 La corsa è di 40 mm.

|   |            | Zinc plated springs / Molle zincate |         |          |        | Stainless steel springs / Molle inox |     |         |          |                  |
|---|------------|-------------------------------------|---------|----------|--------|--------------------------------------|-----|---------|----------|------------------|
|   |            | BBZ+BV                              | BBZ     |          | BV     |                                      | BBX |         | BBX+BV   |                  |
| Chain<br>Catena<br>DIN 8187<br>ISO<br>Pitch |            |                                     |         |          |        |                                      |     |         |          |                  |
|   |            |                                     |         |          |        |                                      |     |         |          |                  |
| 12-B1                                       | 3/4"x7/16" | <b>BB20ZBV4S</b>                    | BB 20 Z | BL010622 | BV 4 S | BL010684                             | 11  | BB 20 X | BL011632 | <b>BB30XBV4S</b> |
| 12-B1                                       | 3/4"x7/16" | <b>BB30ZBV4S</b>                    | BB 30 Z | BL010624 | BV 4 S | BL010684                             | 11  | BB 30 X | BL011634 | <b>BB30XBV4S</b> |
| 16-B1                                       | 1"x17.02mm | <b>BB30ZBV5S</b>                    | BB 30 Z | BL010624 | BV 5 S | BL010685                             | 16  | BB 30 X | BL011634 | <b>BB30XBV5S</b> |
| 16-B1                                       | 1"x17.02mm | <b>BB40ZBV5S</b>                    | BB 40 Z | BL010626 | BV 5 S | BL010685                             | 16  | BB 40 X | BL011636 | <b>BB40XBV5S</b> |
| 08-B2                                       | 1/2"x5/16" | <b>BB20ZBV2D</b>                    | BB 20 Z | BL010622 | BV 2 D | BL010692                             | 7   | BB 20 X | BL011632 | <b>BB20XBV2D</b> |
| 10-B2                                       | 5/8"x3/8"  | <b>BB20ZBV3D</b>                    | BB 20 Z | BL010622 | BV 3 D | BL010693                             | 9   | BB 20 X | BL011632 | <b>BB20XBV3D</b> |
| 10-B2                                       | 5/8"x3/8"  | <b>BB30ZBV3D</b>                    | BB 30 Z | BL010624 | BV 3 D | BL010693                             | 9   | BB 30 X | BL011634 | <b>BB30XBV3D</b> |
| 12-B2                                       | 3/4"x7/16" | <b>BB30ZBV4D</b>                    | BB 30 Z | BL010624 | BV 4 D | BL010694                             | 11  | BB 30 X | BL011634 | <b>BB30XBV4D</b> |

Tensioners for triple chain are provided on request only. // I tenditori per catena tripla si forniscono solo su richiesta.