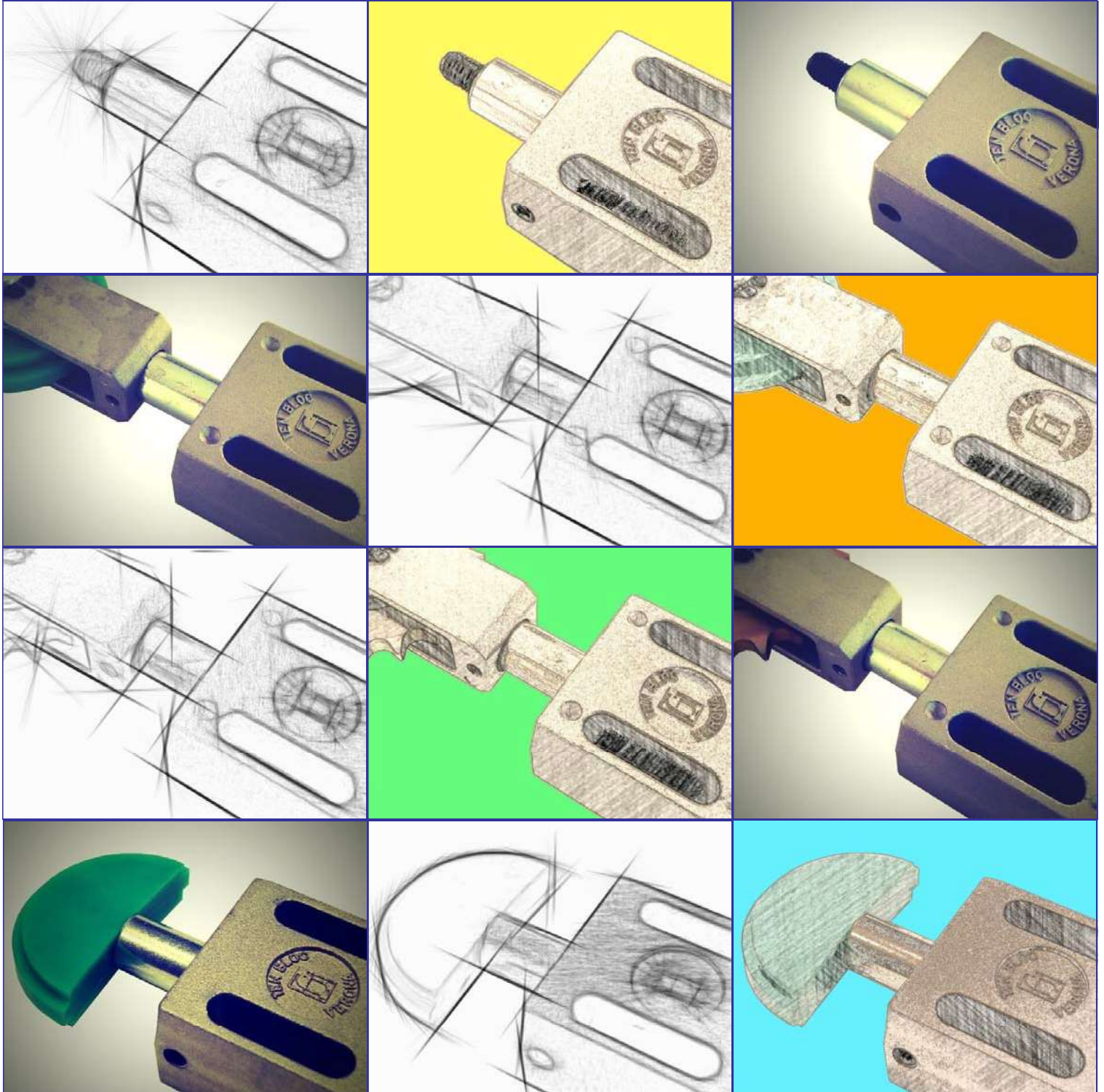




# TB TEN BLOC®

C 2013

获专利- PATENDEED



**TECNIDEA CIDUE**  
**泰尼达 S.r.l.**





## **BIG TEN**

用于输送机或高尺寸传动系统或者需要高负载和长距离的挤压组件的链条或皮带自动张紧的弹簧式弹性组件。

**主要特性:** 高负载，长距离，完全钢制结构，安装简便。

Tecnidea Cidue 以 BIG TEN 系列扩大了其弹簧式弹性组件产品。这一系列的产品设计应用于有高负载需要的尤其苛刻的应用领域 (例如：开采工业、海洋业、钢转化、发酵房等) 及对需要对链条进行大型补偿的领域。

BIG TEN 由完全为焊钢结构的主体组成，其中伸出一个直径为 50mm，有用行程为 200mm 的圆柱。圆柱在主体内部安置的轴承内滑动。在巨大节距的链条的情况下，在圆柱上可能使用交界配件。如有需要，我们可设计用于巨型输送机从动轴的链条和皮带或挤压组件的进一步的交界配件。BIG TEN 具备螺钉预加压系统，以便简化安装操作。若有需要，在 BIG TEN 上还可能安装电子限位开关，用于机器运行的监控。另外 BIG TEN 可设计为单向式，推动为唯一可能的运作方式，因为齿轨式棘轮装置不允许圆柱重新进入。



## **BIG TEN**

*SPRING ELASTIC ELEMENTS TO TIGHTEN AUTOMATICALLY CHAINS OR BELTS FOR CONVEYORS OR TRANSMISSIONS WITH BIG DIMENSIONS OR WHERE PRESSURE UNITS WITH HIGH LOAD AND BIG TRAVEL ARE REQUIRED.*

**Main features:** High loads, big travel, structure made entirely of steel, easy to assemble.

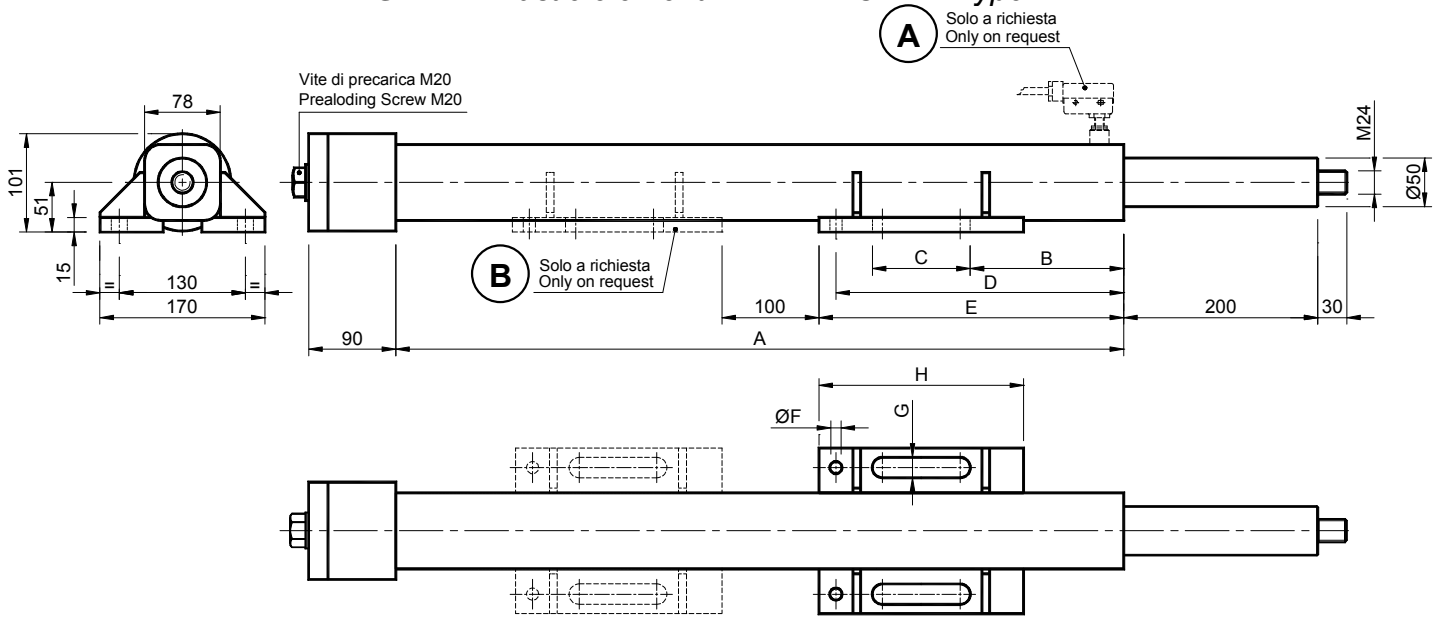
*Tecnidea Cidue expanded its spring elastic elements production range with the BIG TEN series. This range of articles have been planned for very heavy uses where high loads are required (ex. mining and naval industry, steel transformation, leavening cells etc.) and large recoveries of chain.*

*BIG TEN is made of a body with a structure entirely made of welded steel, from which comes a column with a diameter of 50 mm with an usable travel of 200 mm. The column slides into a bushing located in the body. On the column can be mounted several Kits for chains with higher pitch. On demand we can manufacture other interface kits for chains or belts or for pressure units for the driven shift of big conveyors. BIG TEN is fitted with a screw preloading system to make the assembling operations easier. On the BIG TEN it is possible to install also, on demand, a travel end switch to test the machine's working. BIG TEN can be made in the onedirectional version, which means that it can move only in thrust conditions, since a rack ratchet gear doesn't allow the column to return.*





**BIG TEN 弹性组件 重型系列 – 型号: BT**  
**BIG TEN Elastic element HEAVY DUTY – Type: BT**



- 材料** 外部结构、圆柱和弹簧均为钢制。滑动轴衬为铜制。
- 处理** 外部结构为烤炉涂漆，堵盖、圆柱和预加压螺钉为镀锌钢。粗加工螺钉涂油。
- 应用** 用于巨型链条的加紧或链条式输送机上从动端挤压组件的弹簧式弹性组件。
- 若有需要，可提供配备电子限位开关 "A" 或第二个安装底座 "B" 的弹性组件。

**MATERIAL** The carpentry, the column and the spring are made of steel. The sliding bush is made of bronze.

**TREATMENTS** Carpentry oven painted, stopper, column and preloading screw made of galvanized steel. Raw greased spring.

**USE** Spring elastic element to tighten big chains or for pressure units on transmissions in chain-conveyors.

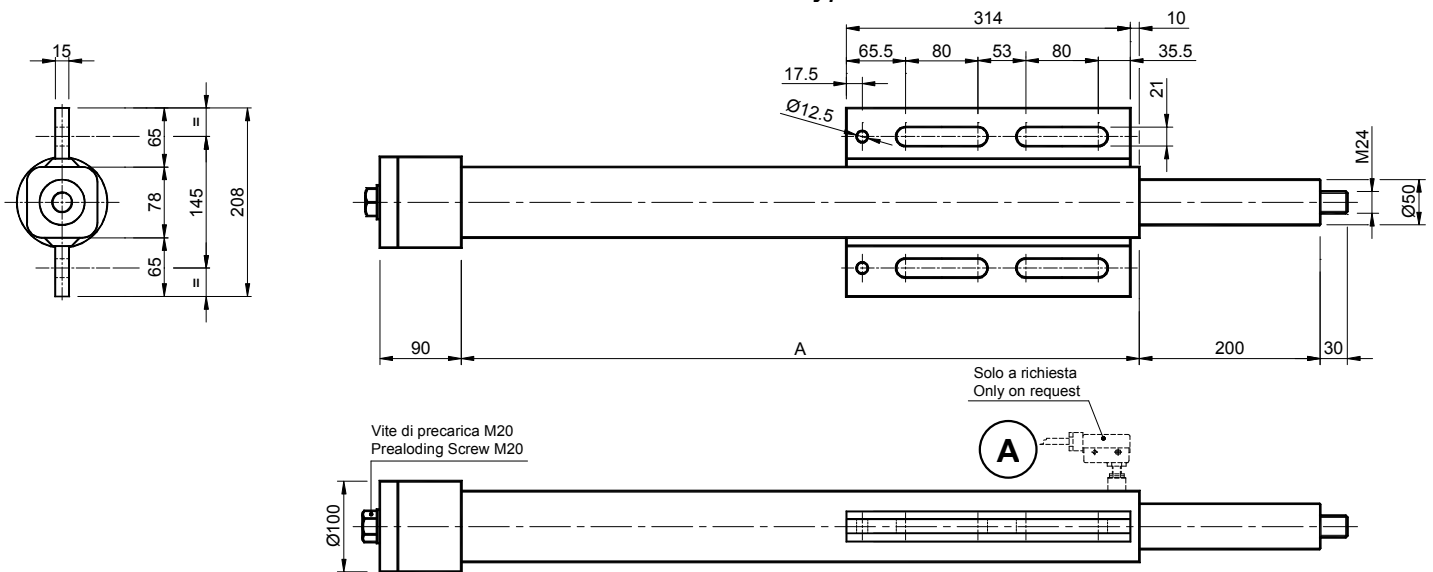
On demand it can be provided with travel-end switch "A" or with a second installation base "B".

型号 Type	编号 N°	A	B	C	D	E	F	G	H	Newton	重量 Weight in Kg
BT 16 250	TB030000	630	161	85	289	310	10.5	16.5	210	0 - 2500	24.0
BT 20 250	TB030005	630	132.5	121	293	310	12.5	21.0	210	0 - 2500	24.0
BT 16 500	TB030015	750	161	85	289	310	10.5	16.5	210	0 - 5000	25.0
BT 20 500	TB030020	750	132.5	121	293	310	12.5	21.0	210	0 - 5000	25.0
BT 16 750	TB030025	865	161	85	289	310	10.5	16.5	210	0 - 7500	26.5
BT 20 750	TB030030	865	132.5	121	293	310	12.5	21.0	210	0 - 7500	26.5
BT 16 1000	TB030035	1150	161	85	289	310	10.5	16.5	210	0 - 10000	30.0
BT 20 1000	TB030040	1150	132.5	121	293	310	12.5	21.0	210	0 - 10000	30.0



**BIG TEN 弹性组件 重型系列 – 型号: LT 为侧部连接**

**BIG TEN Elastic element HEAVY DUTY – Type: LT with lateral connection**



**材料** 外部结构、圆柱和弹簧均为钢制。滑动轴衬为铜制。

**处理** 外部结构为烤炉涂漆，堵盖、圆柱和预加压螺钉为镀锌钢。粗加工螺钉涂油。

**应用** 用于巨型链条的加紧或链条式输送机上从动端挤压组件的弹簧式弹性组件。

若有需要，可提供配备电子限位开关 "A" 的弹性组件。

**MATERIAL** The carpentry, the column and the spring are made of steel. The sliding bush is made of bronze.

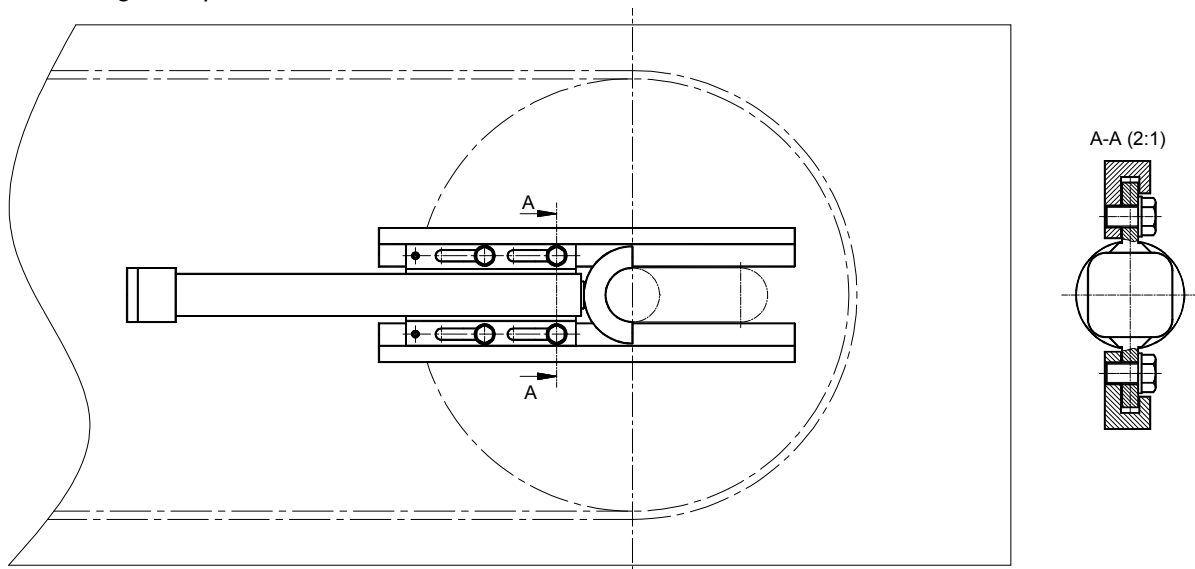
**TREATMENTS** Carpentry oven painted, stopper, column and preloading screw made of galvanized steel. Raw greased spring.

**USE** Spring elastic element to tighten big chains or for pressure units on transmissions in chain-conveyors.

On demand it can be provided with travel end switch "A".

型号 Type	编号 N°	A	Newton	重量 Weight in Kg
LT 20 250	TB030100	630	0 - 2500	24.0
LT 20 500	TB030105	750	0 - 5000	25.0
LT 20 750	TB030110	865	0 - 7500	26.5
LT 20 1000	TB030115	1130	0 - 10000	30.0

**安装实例 / Assembling example**

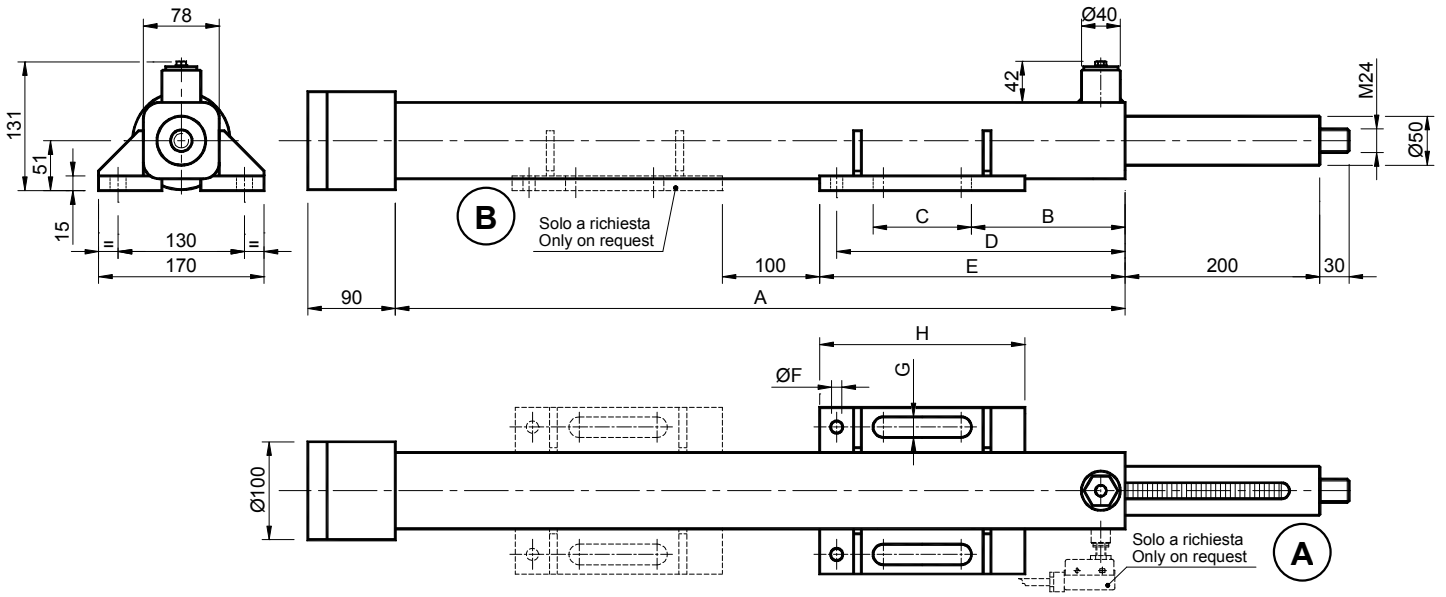


**具“侧部连接”的 BIG TEN 弹性组件**可用于设计在巨型链条或皮带输送机的从动轴中的挤压组件。弹性组件应安装在几块导向板上以便保证整组的滑动。

**The BIG TEN elastic element "with lateral hooking"** can be used to get pressure units in the return shift of big chain-or belt-conveyors. The elastic element must be mounted on slides which allow the sliding of the whole unit.

**BIG TEN 弹性组件 重型系列 – 型号: UT 单向**

*Elemento Elastico BIG TEN HEAVY DUTY – Type: UT One directional*



**材料** 外部结构、圆柱和弹簧均为钢制。滑动轴衬为铜制。

**处理** 外部结构为烤炉涂漆，堵盖、圆柱和预加压螺钉为镀锌钢。粗加工螺钉涂油。

**应用** “单向”弹簧式弹性组件。链条或皮带的游隙通过弹簧的运动自动补偿。“单向”意指圆柱只能作推出动作，不能自由地重新进入。

若有需要，可提供配备电子限位开关“A”或第二个安装底座“B”的弹性组件。

**MATERIALS** Carpentry, column and spring made of steel. The sliding bush is made of brass.

**TREATMENTS** Oven painted carpentry, stopper, column and preloading screw made of galvanized steel. Greased raw spring.

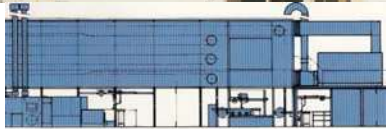
**USE** “One-directional” spring elastic element. The recover of chain- or belt- slack takes place automatically through the spring action. The definition

“One-Directional” indicates that the column has a movement only in drag conditions and it is not free to move back.

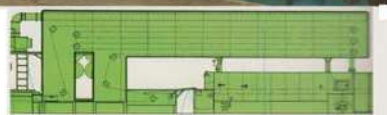
On demand it can be provided with travel end switch “A” or with a second installation base “B”.

型号 Type	编号 N°	A	B	C	D	E	F	G	M	Newton	重量 Weight in Kg
UT 16 250	TB030150	630	161	85	289	310	10.5	16.5	210	0 - 2500	24.0
UT 20 250	TB030155	630	132.5	121	293	310	12.5	21.0	210	0 - 2500	24.0
UT 16 500	TB030160	750	161	85	289	310	10.5	16.5	210	0 - 5000	25.0
UT 20 500	TB030165	750	132.5	121	293	310	12.5	21.0	210	0 - 5000	25.0
UT 16 750	TB030170	865	161	85	289	310	10.5	16.5	210	0 - 7500	26.5
UT 20 750	TB030175	865	132.5	121	293	310	12.5	21.0	210	0 - 7500	26.5
UT 16 1000	TB030180	1150	161	85	289	310	10.5	16.5	210	0 - 10000	30.0
UT 20 1000	TB030185	1150	132.5	121	293	310	12.5	21.0	210	0 - 10000	30.0

可能的应用实例 / Examples of possible applications:



冷却房。Cooling proofer.

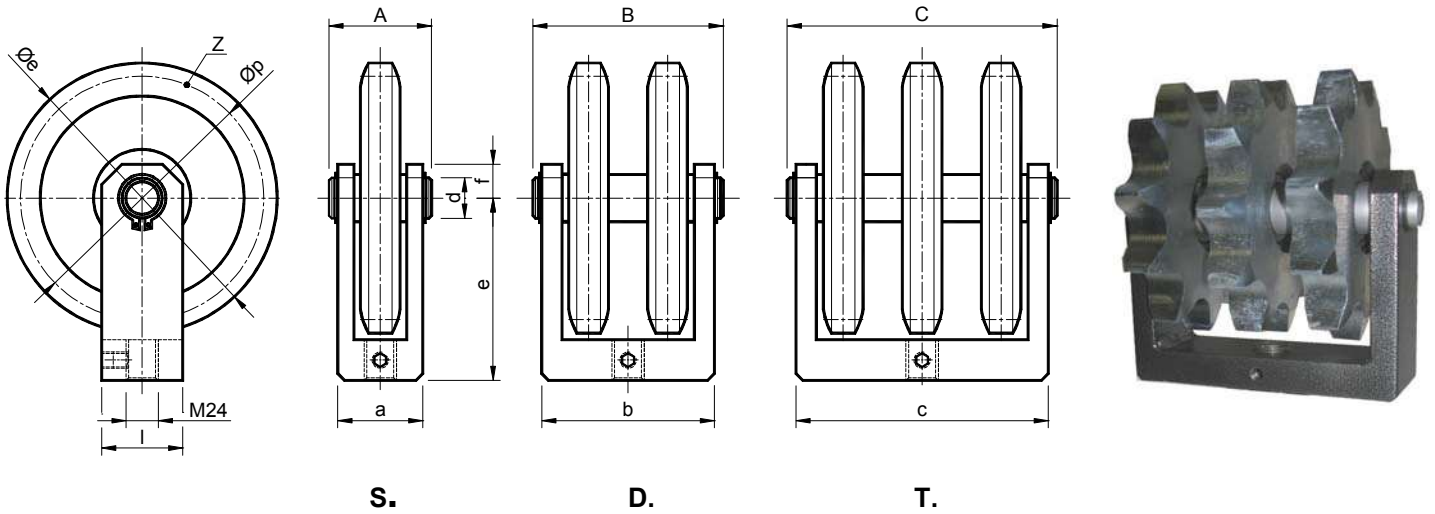


发酵房。Proofer.

**链条张紧装置配套元件 / KIT for chain tighteners**

在支架上的张紧装置镀锌钢链轮 – 型号: **BRR**

*Pinion tighteners made of galvanized steel on fork – Type: BRR*



**材料** 支架、轴承、齿冠、垫圈和中心轴均为钢制。

**处理** 支架为烤炉涂漆，齿冠、中心轴和垫圈均为镀锌钢。轴承润滑。

**应用** 在中心轴上的空转链轮。链轮由钢制齿冠组成，安装在润滑轴承上。

工作速度 ≤60 米 / 分。工作温度 ≤100°C。

**MATERIALS** Fork, Bearing, crown, spacers and pin made of steel.

**TREATMENTS** Fork made of painted steel. Crown, pin and spacers made of galvanized steel. Greased Bearings.

**USE** Idle pinion on the fork. The pinion consists of a steel crown, mounted on greased bearings.

Operating speed ≤60 m/min.

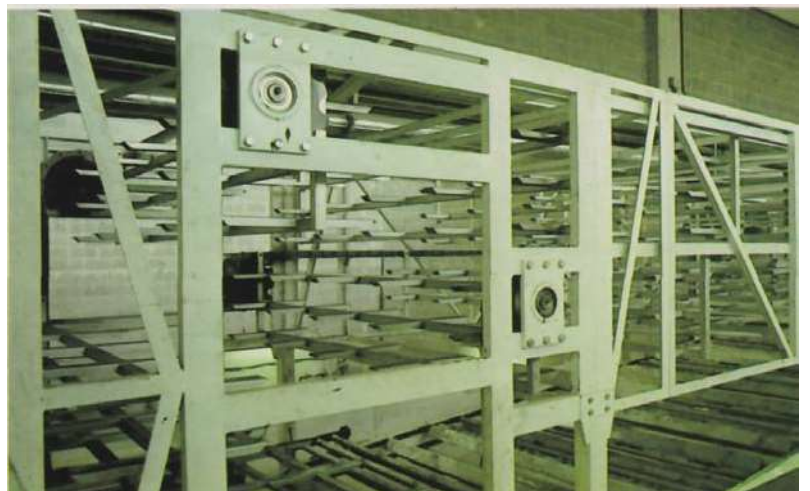
Operating temperature ≤100°C.

型号 Type	编号 N° S.	编号 N° D.	编号 N° T.	链条 Chain	a	A	b	B	c	C	d	e	f	l	Øp	Øe	Z	重量 Weight in Kg		
																		S.	D.	T.
<b>BRR 8</b>	TB030500	TB030510	TB030520	1"3/4 x 1"1/4	63	76	123	136	189	202	30	125	25	50	157.77	174.0	11	4.00	8.00	12.00
<b>BRR 9</b>	TB030505	TB030515	TB030525	2" x 1"1/4	63	76	128	141	189	202	30	135	25	50	180.34	200.0	11	5.00	10.00	15.00

可能的应用实例 / *Examples of possible applications:*



冷却输送机。  
*Cooling conveyor.*



输送机。  
*Conveyor.*





TECNIDEA CIDUE S.r.l.  
Via Apollo XI, 12 (trav. Via Cavrara)  
37057 S. Giovanni Lupatoto - Verona - Italy  
tel. 0039 (0)45 8750250 - fax 0039 (0)45 8750288  
www.tecnideacidue.com  
e-mail: sales@tecnideacidue.com

ideas ideas ideas ideas

### Tecnidea Cidue Worldwide

Austria - Belgium - Bulgaria - Czech republic - Denmark  
Finland - France - Germany - Greece - Hungary  
Ireland - Italy - Latvia - Lithuania - Malta - Netherlands  
Norway - Poland - Portugal - Romania - Slovakia  
Slovenia - Spain - Sweden - Switzerland - Ukraine  
United Kingdom - Argentina - Australia - Brasil  
Canada - China - Chile - India - Indonesia - Iran - Israel  
Japan - Jordan - South Korea - Mexico - New Zeeland  
Peru - Philippines - Russia - Singapore - Taiwan  
Thailand - Tunisia - Turkey - U.S.A.

