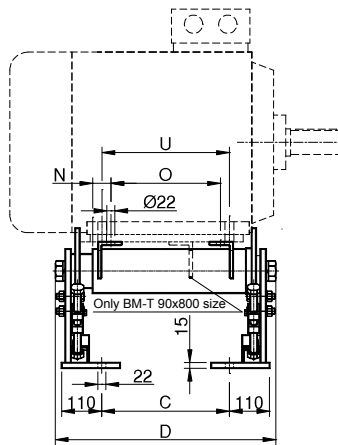
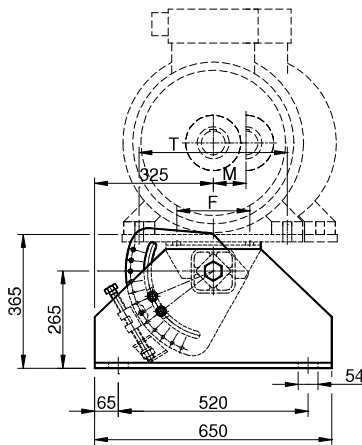


Motorwippen **VIB** Typ: **BM-T 90** / Elastic Components **VIB** Type: **BM-T 90**

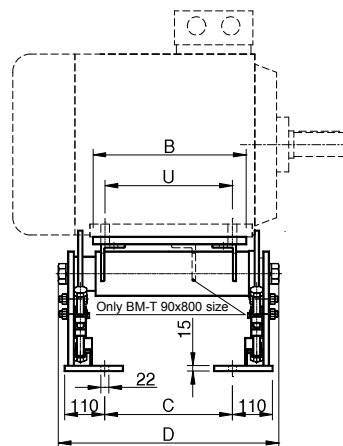
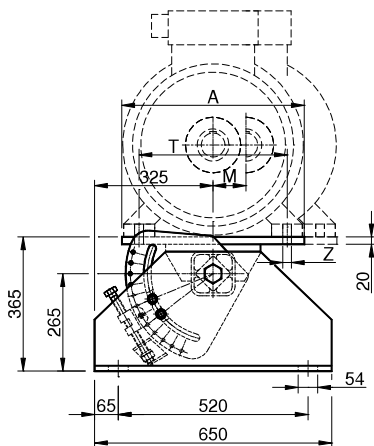
Ohne Motorplatte / Without motor plate:



Typ Type	Code-Nr. Code no.	Motorgroße Motor Size	1000 min ⁻¹ kW	1500 min ⁻¹ kW	C	D	F	M	N	O	T	U	Z	Gewicht Weight in kg
BM-T 90 x 400	RE022440	D 250 M	37,00	55,00	350	595	200	50	50	300	406	349	22	117,80
BM-T 90 x 550	RE022455	D 280 S D 280 M	45,00 55,00	75,00 90,00	500	745	200	50	95	360	457 457	368 419	22	128,80
BM-T 90 x 650	RE022465	D 315 S	75,00	110,00	600	845	200	70	135	380	508	406	26	135,40
BM-T 90 x 800	RE022470	D 315 M D 315 L	90,00-110,00 110,00-160,00	132,00-160,00 160,00-200,00	723	968	200	70	135	503	508 508	457 508	28	150,00

Die Motorplatte wird nicht von Tecnidea Cidue beigestellt. Der Motor kann in Treibrichtung (Quote M) positioniert werden.
The baseplate supporting the engine, is not supplied by Tecnidea Cidue. The engine could be overhanging assembled (quota M).

Mit Motorplatte / With motor plate:



Typ Type	Code-Nr. Code no.	Motorgroße Motor Size	1000 min ⁻¹ kW	1500 min ⁻¹ kW	A	B	C	D	M	T	U	Z	Gewicht Weight in kg
BM-TP 90 x 400	RE022441	D 250 M	37,00	55,00	510	410	350	595	50	406	349	22	155,00
BM-TP 90 x 550	RE022456	D 280 S D 280 M	45,00 55,00	75,00 90,00	560	500	500	745	50	457 457	368 419	22	175,00
BM-TP 90 x 650	RE022466	D 315 S	75,00	110,00	630	570	600	845	70	508	406	26	195,00
BM-TP 90 x 800	RE022471	D 315 M D 315 L	90,00-110,00 110,00-160,00	132,00-160,00 160,00-200,00	630	750	723	968	70	508 508	457 508	28	225,00

Die Motorplatte wird von Tecnidea Cidue in "zentrierter" Konfiguration geliefert. Der Kunde kann den Motor mittels der auf der Platte befindlichen Bohrungen in Treibrichtung (Quote M) positionieren.
The baseplate supporting the engine, is supplied by Tecnidea Cidue in "centered" configuration. The engine could be overhanging assembled (quota M) by the clients, with the threaded hole existent on plate.