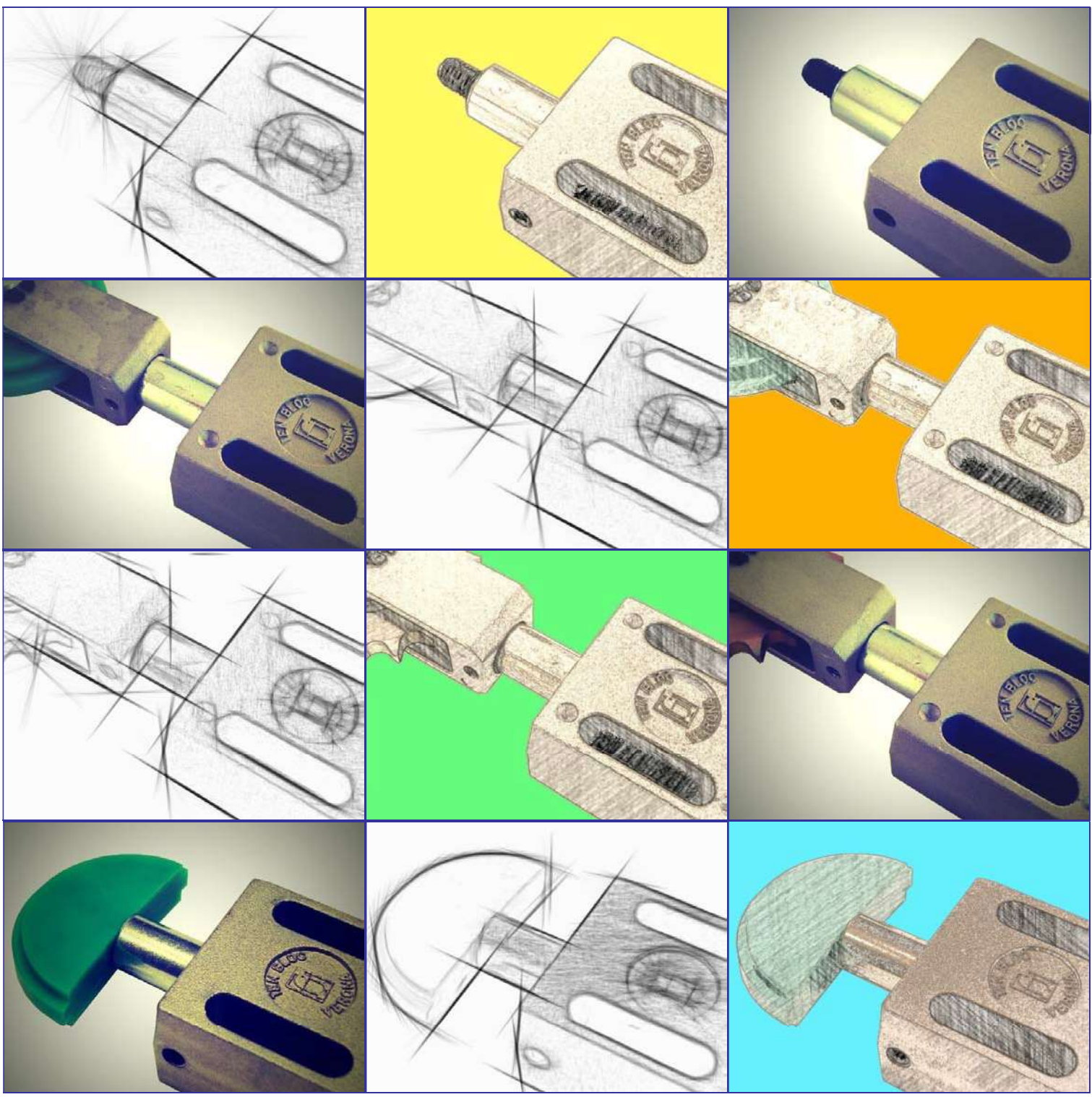


TC2 

TEN BLOC[®]

C 2013

获专利- PATENDED



TECNIDEA CIDUE
泰尼达 S.r.l.



TEN BLOC® – 获专利

弹簧式轴向弹性组件 – 自动链条张紧装置 – 自动皮带张紧装置

张力锁定组件 – 挤压组件 – 减震器

主要特性: 模块化, 一条圆柱 – 一根弹簧, 两个固定螺钉, 坚固, 结构为金属、铝、钢制。可能的不锈钢部件, 可产生低和高负载, 扭转式或固定顶部, 预加压, 抗扭转, 单向, 监控用电子限位开关, 低和高的工作温度, 减震器, 挤压组件, 用于传动系统和输送系统的从动轴张紧组件, 手动张紧装置。

TEN BLOC 是为满足市场最广泛的需求而设计的弹簧式轴向弹性组件: 自动链条张紧装置, 自动皮带张紧装置, 皮带或输送机从动轴的自动张紧装置, 减震器, 挤压组件等。

TEN BLOC 由一个铝质压铸的盒状主体组成, 其中伸出一根由机械弹簧推出的钢质圆柱。圆柱在主体内安装的轴承内滑动。在圆柱上可能添加许多的交界配件: 聚乙烯滑块 (型号 V 和 L), 安装在支架上的聚乙烯滑轮 (型号 RF), 安装在支架上的链轮 (型号 RR), 及安装在支架上的镀锌钢滚轮 (型号 RAU) 或者安装在支架上的聚酰胺滚轮 (型号 RAP)。TEN BLOC 可配备预加压系统 (TB), 单向系统 (TBB), 抗扭转系统 (TBA)。盒状主体另外可配备电子限位开关, 可在任何时刻确保机器的正确运转, 在链条过度伸长或断裂的情况下可引发声音、闪光信号或有必要的话, 中断机器的运转。在 TEN BLOC 产品系列中另外还具备 DECA 挤压组件, 一般来讲用于在皮带或输送机的从动轴作为挤压组件。DECA 也可作为减震器和减速器应用。使用 DECA 可能获得用于自身需要的功能的不同推动力和行程。使用 TEN BLOC 产品系列可进行特定操作所需的组件, 比如双重滑动导向的组件 (TBCU) 和作拉动动作的组件 (TBt)。另外, TEN BLOC 以其模块化而与众不同, 因只要适当地连接组成基础组件的不同组件 (圆柱、圆筒、堵盖、弹簧、接头和主体) 便可能制造适应于自身需要的产品。

TEN BLOC® – Patented

AXIAL ELASTIC ELEMENT – AUTOMATIC CHAIN TIGHTENER – AUTOMATIC BELT TIGHTENER - TENSION BLOCK DOWN HOLDERS – SHOCK ABSORBER

Main features: Modular, one column-one spring, two screws for the fixing, Strong - structure made of metal, aluminium, steel - possible components made of stainless steel - low and high generated loads - fixed or rotating head – preloading – anti-rotation – one-directional - travel-end switch for checking – low and high operating temperatures – shock absorber – pressure application – return supports for transmissions and conveyors – manual tightener.

TEN BLOC is an automatic axial chain or belt tightener designed to satisfy the widest market-needs: automatic chain tensioner device, automatic belt tensioner device, automatic tensioner of driven shaft of chain or belt conveyors, bumper, pressure units etc.

TEN BLOC consists of a steel column thrust by a mechanical spring connected to a box-shaped body made of die-cast aluminium. The column slides inside a bronze ring lodged inside the body. It is possible to mount different types of interface kits on the top of the column: polyethylene sliding blocks (type V and L), polyethylene wheels on fork (type RF), pinions on fork (type RR) and zinc plated steel rollers on fork (RAU) or polyamide rollers on fork (RAP). TEN BLOC can be provided with a preloading system (TB), with a one-directional system (TBB) or with an anti-rotation system (TBA). The box-shaped body can, furthermore, be equipped with an electric travel-end switch that allows to check whether the machine works properly at every moment. In case of excessive chain lengthening or chain breaking the same device activates an acoustic or light signal or, if necessary, stops the plant. Also part of the TEN BLOC product range are the DECA pressure units for driven shaft of belt or chain conveyor. DECA can also be used as shock absorbers and decelerators. With DECAs one can obtain different forces of thrust and different travels according to one's actual needs. The entire TEN BLOC product range makes it possible, on request, to perform special executions such as elements with double slide guide (TBCU) or elements functioning in drag conditions (TBt). TEN BLOC furthermore distinguishes itself for its modularity as it aptly joins several base elements (columns, cylinders, plugs, springs, junctions and bodies) thus enabling one to produce user-defined products which will suit individual needs.

产品系列: / **PRODUCT RANGE:**

“获专利 -PATENTED”



TEN BLOC – TEN BLOC



TN 第 36 页



TNa 第 36 页



TB 第 37 页



TBa 第 37 页



TBB 第 38 页



TBA 第 39 页



TBAB 第 40 页



TF 第 43 页



TBP 第 31 页



TB FCE 第 34 页



TBCU 第 34 页



TBt 第 35 页



DECA 第 41 页



DECA Pr 第 41 页



DECA Un 第 42 页



2TB 第 43 页

产品系列: / *PRODUCT RANGE:*

“获专利-PATENTED”

| | | | |
|--|--|--|---|
|  <p>TB 80 A 第 44 页</p> |  <p>TB 80 F 第 44 页</p> |  <p>TB2-40 第 46 页</p> |  <p>TB2-50 第 47 页</p> |
|  <p>V80 第 45 页</p> |  <p>V 第 49 页</p> |  <p>L 第 50 页</p> |  <p>RF 第 51 页</p> |
|  <p>RR 第 52 页</p> |  <p>RU 第 53 页</p> |  <p>RP 第 53 页</p> |  <p>2V 第 55 页</p> |
|  <p>2RR 第 56 页</p> |  <p>2RAU 第 57 页</p> |  <p>2RAP 第 57 页</p> |  <p>BT /UT 第 64-66 页</p> |
|  <p>LT 第 65 页</p> |  <p>BRR 第 67 页</p> |  <p>F 第 58 页</p> |  <p>Accessories 第 58-59-60-61 页</p> |

安装指导: / Assembly instructions:

Ten Bloc 张紧装置通过 M8 螺钉在位置 (A) 固定在机器结构上, 见图 1, 这些螺钉插在主体上宽度为 9mm 的槽中。

在盒状主体的两边中其中一边, 另外还存在四个凹处, 在使用者想提高张紧装置的固定的情况下, 可作为使用插销或 M6 螺钉在主体上穿孔的记号, 见图 1 位置(B)。

Ten Bloc tensioners are fixed to the structure of the machine by M8 screws, positioning (A) of figure 1, that are put in slots with length 9mm present on the body.

On one of the two sides of the box body there are also four hollows that can be used as marks if the user want to drill the body in order to increase the fixing of the tightener by pins or M6 screws, positioning (B) of figure 1.

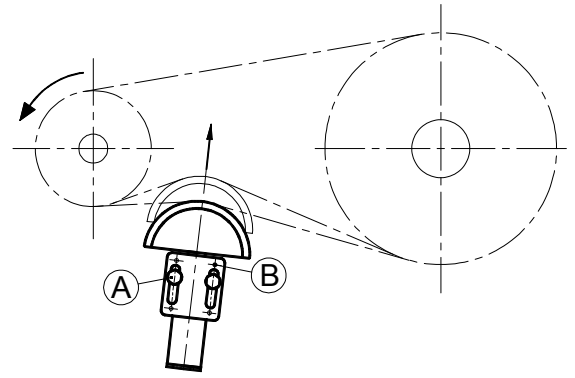


图 1

预加压系统: / Preloading system:

为了简化安装步骤, TEN BLOC 张紧装置 TB 或 TBP 型具备一个预加压系统。在尺寸从 10 到 40 的张紧装置中, 预加压系统使用一个 定位在张紧装置侧面的无头螺钉 (C), 更大的尺寸, 使用一个定位在堵盖底部的 TE M8 或 M12 螺钉 (D)。

尺寸 TB 10-20-30-40 (图 2):

用手或钳子或压力机压紧张紧装置, 在最高压缩的位置用止动螺钉扳手或 T 形扳手将无头螺钉 (C) 在主体侧面拧紧。在将张紧装置在之前所描述的准确位置安装在设备上之后, 拧下无头螺钉。圆柱将从中退出, 张紧装置将开始工作。

尺寸 TBP 50-60-70-80-90 (图 3):

拧下在堵盖底部的螺钉 M8 或 M12 (D)。圆柱将压紧弹簧重新进入。在将张紧装置在之前所描述的准确位置安装在设备上之后, 拧松预加压螺钉直到完全拔出。圆柱将从中退出, 张紧装置将开始工作。

尺寸 / Size 10-20-30-40

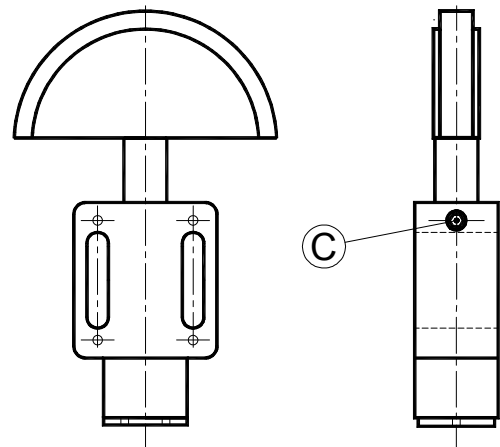


图 2

尺寸 / Size 50-60-70-80-90

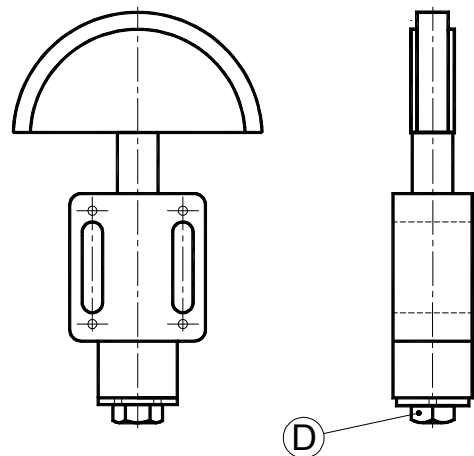


图 3

TEN BLOC tighteners type TB or TBP have a preloading system to facilitate the assembling operations. This system is realized by a grub screw (C) positioned on the side of the tensioner in the sizes from 10 to 40, and by a TE M8 or M12 screw (D) positioned on the bottom of the cap for the following sizes.

Size TB 10-20-30-40 (Figure 2):

Compress the tensioner by hand, or by vice, or by press, while it is in the maximum compression position, tighten with setscrew wrench or T-wrench the grub screw (C) on the side of the body. After you have positioned the tightener on the plant, fixing it in the right position as we described previously, unscrew the grub screw. The column will come outside and the tensioner will start to work.

Size TBP 50-60-70-80-90 (Figure 3):

Tighten the M8 or M12 screw (D) positioned on the bottom of the cup. The column will reenter compressing the spring. After you have positioned the tightener on the plant, fixing it in the right position as we described previously, unscrew the preloading screw until it takes it out completely. The column will come outside and the tensioner will start to work.

单向组件的安装指导

Assembling instructions of a ONE-DIRECTIONAL element

中国国旗 TEN BLOC 型号 TBB 强制圆柱在单一方向操作，即推动方向。在张紧装置上施与棘轮效应，不允许圆柱在运转中重新进入。使用这种方法，张紧装置对伸长进行自动弥补，但是如同固定张紧装置运作。这种应用尤其有助于消除圆柱的突然屈伸及轴向振动。在堵盖底部的 M8 螺钉的功能为使得单向系统运转并对张紧装置进行预加压。

英国国旗 The tensioners TEN BLOC type TBB force the column to move in only one direction, that is the one of thrust. In fact, on the tightener acts a ratchet gear, that doesn't allow to the column to reenter during its working. With this device the tensioner automatically takes up any stretching, but operates as a fixed tightener. This application is particularly useful for cutting out whiplashes and axial head oscillations. The M8 screw on the bottom of the cup has the function both of accomplishment of the one-directional system and to pre-load the tensioner.

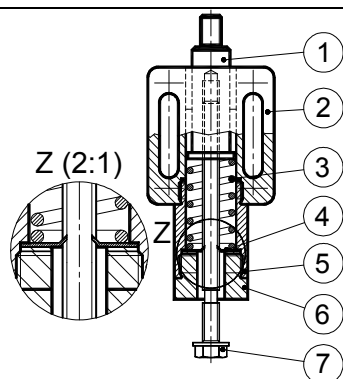


图 1

- 1) 圆柱 / column
- 2) 主体 / body
- 3) 弹簧 / spring
- 4) 弹簧钢制弹簧 / spring in harmonic steel
- 5) 圆筒 / cylinder
- 6) 堵盖 / stopper
- 7) M8 螺钉 / screw M8

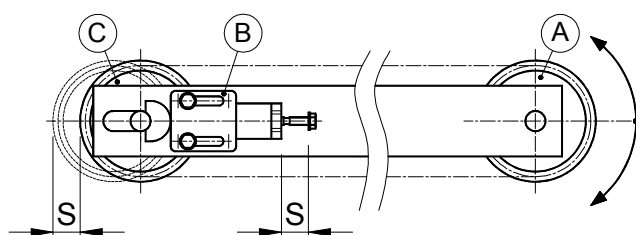


图 2

用于联动轴张紧的单向 TEN BLOC 安装举例：

Assembling example of a one-directional TEN BLOC for the tensioning of a return shift:

A: 驱动轮 / Driving wheel

B: 单向张紧装置 / One directional tensioner

C: 从动轮 / Driven wheel

S: 行程 / Stroke

中国国旗 第 1 步:

扭转螺钉 (7) 将张紧装置预加压，直到圆柱 (1) 完全进入主体内部。

第 2 步:

使用螺钉 M8 在主体 (2) 上的槽的位置将张紧装置牢固地固定在装置上。张紧装置的安装位置也应可使用槽的行程对链条长度作进一步的“手动”弥补 (见图 2)。

第 3 步:

拧松螺钉 (7) 拧松长度与所想获得的行程 (S) 相等，不可超过在产品目录上所示的最大长度。螺钉 (7) 应留在张紧装置内。

英国国旗 Step 1:

Load the tightener by screwing the screw (7) until the column (1) is completely inside the body.

Step 2:

Position the tightener rigidly on the plant by using M8 screws and taking advantage of the slots on body (2). The tensioner should be positioned so you can take advantage also of the stroke of the slots for a further “manual” recovery of the length of the chain (as in figure 2).

Step 3:

Unscrew the screw (7) for a distance equal to the wanted stroke (S), without exceed the maximum dimension indicated on the catalogue. The screw (7) must be left in the tightener!

抗扭转系统: / Anti-Rotation system:

TEN BLOC 张紧装置有可能配备围绕在轴外的抗圆柱扭转系统，以防止安装在张紧装置上的配件的扭动。

这项手段可消除顶部的放射性振动，其应用主要适用于高速传动系统 ($v > 20$ m/min) 及在所有链条易受强烈振动的情况下。由于抗扭动系统可使得皮带张紧滚轮在正确的位置运转，尤其适和在皮带张紧组件中使用。另外抗扭动系统还可在用张紧组件设计整个传动端张紧组的情况下使用，尤其在长轴间距的传动系统中。

抗扭转以两种方式进行：

- 方式“a” (图 2):

使用一个具方形截面的垫圈完全阻止圆柱的扭动，其优点在于这种方法简单经济。

图 2 显示抗扭转组件“TBa”和组件“TN”或“TB” (图 1) 之间的制作区别，因在后者中圆柱有可能在其轴上扭转。在组件“TBa”中一个放置在方形截面铝制盒状主体的内部的具方形截面的垫圈防止圆柱的扭动。在组件“TN”或“TB”中，所用的垫圈的截面是圆形的。

- 方式“A” (图 3):

使用张紧装置外部的配件。在这种情况下，圆柱方向为可调节的，使得其与链条 / 皮带调直，之后可能通过螺钉 (F) 阻止其扭动的可能性。

UK TEN BLOC tighteners can be provided with an anti-rotation system of the column around its own axis in order to prevent the rotation of the kit assembled on the tensioner.

This solution eliminates the radial head vibrations, it is particularly useful for the transmissions where are involved high speeds ($v > 20$ m/min) and in all operations where the chain is subjected to strong oscillations. The anti-rotation system is particularly useful in the use of elements for the tensioning of belts, since this system allows to the roller belt tightener to work always in the right position.

Moreover it is useful when the tensioner element is used to realize all the return unit, above all with long distances between centers.

The anti-rotation is made in two versions:

- Version “a” (Figure 2):

It considers the use of a washer with square section that it prevent completely the rotation of the column, its advantage is to be an easy and cheap solution. The picture 2 shows the difference of construction between a “TBa” anti-rotation element and a “TN” or “TB” element (figure 1) where the column has the possibility to rotate on its own axis. In the “TBa” element the rotation is prevented by a washer with square section positioned in the alluminium box body, that has square section too. In the “TN” or “TB” elements, instead, is used a washer with round section.

- Version “A” (Figure 3):

It considers the use of a kit external to the tightener. In this case the column is revolving, in order to allow the alignment with the chain/belt, and in a second moment it is possible to stop by a screw (F) the possibility of rotation.

TN 或 TB 型号的基本方式: Basic version for types TN or TB:

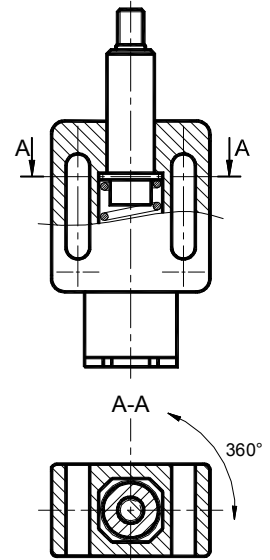


图 1

方式“a” / Version “a”:

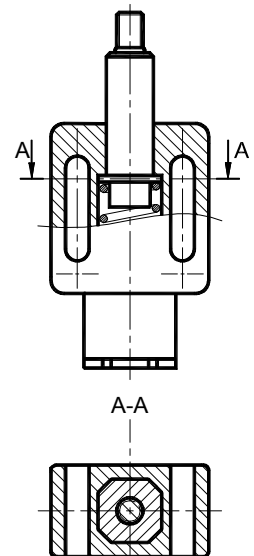


图 2

方式“A” / Version “A”:

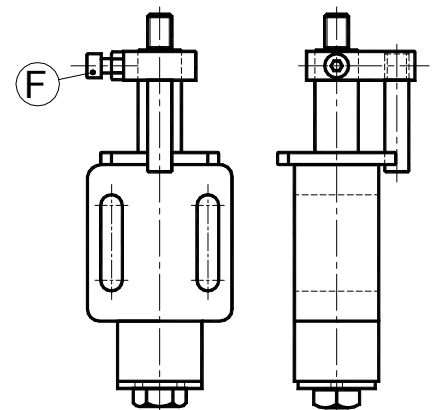




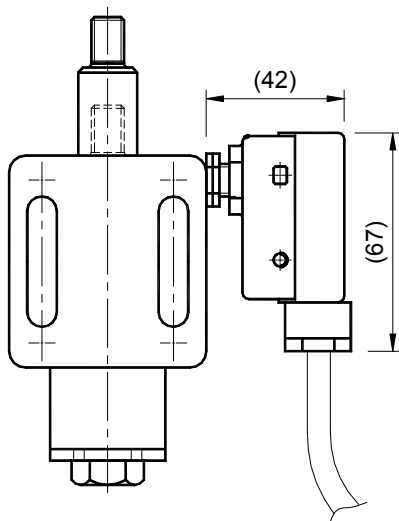
图 3

电子限位开关 型号: "E" / TRAVEL-END SWITCH type: "E"

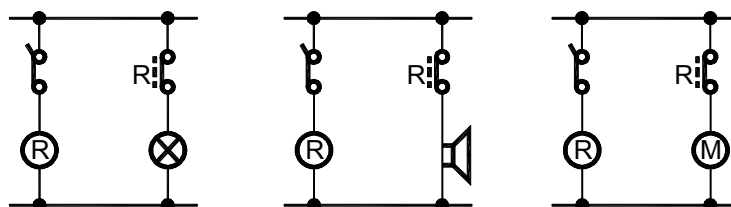


 弹簧式弹性组件 TEN BLOC, 可根据客户要求配备电子限位开关“E”。FCE 的应用范围广泛, 可监督和确保机器的正确运转, 也可接收和发出完成机械功能的命令信号。这项系统在有必要保证机器的完整性和 / 或保证操作人员人身安全时极为有用。


 *The elastic spring elements TEN BLOC can be supplied, on demand, with travel-end switch "E". The applications with FCE are various, since they allow to check and to prove the correct functioning of the machine, but also to receive or to give control signals for the carrying out of the mechanical functions. This system is particularly useful when you want to grant the integrity of the machine and/or where the workers' safety must be protected.*




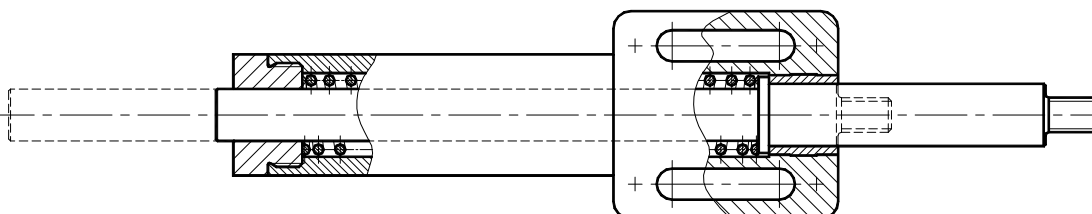
电子示图: / Electrical diagram:



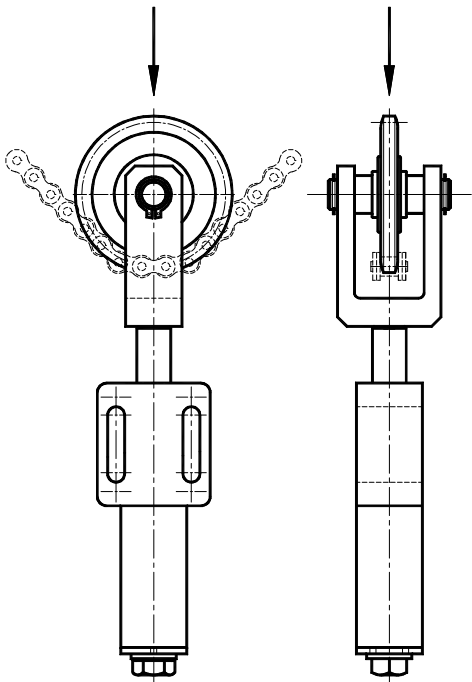
双向 型号: "TBCU" / DOUBLE SLIDE type: "TBCU"

 双向 TBCU 的运转, 由于圆柱在主体上和终端堵盖的双重支撑, 有效地减低由于运转磨损而造成的游隙, 保证柱在伸出时的最大稳定性。这一办法尤其适用于具有高行程 (高于 60mm) 以及存在对柱轴横向负载的条件。有关此产品的技术数据, 请咨询本公司技术部。

 *The execution with double slide TBCU, thanks to the double support of the column, both on the body and on the final cap, reduces significantly the coupling clearances due by the functioning wear, granting an higher stability of the rod in output. This solution is particularly useful for the applications with high travel (bigger than 60mm) and with loads trasverse to the axis of the column. For the technical specifications of this product, we suggest you to contact our technical department.*



“拉动”链条张紧装置 型号: "TBt" / CHAIN TIGHTENER IN "DRAG CONDITION" type: "TBt"

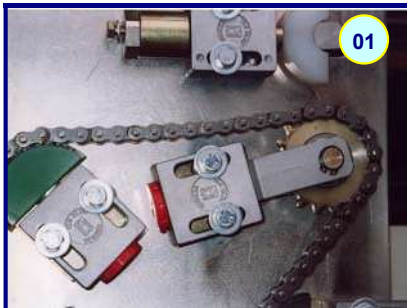


为了运转的选择也可为了安装的需要，TBt 弹性组件可满足应用于拉动而不是推动动作的所有需要。

在这种应用中，与一般性运转不同，链条被拉动而不是被推动。有关此产品的技术数据，请咨询本公司技术部。

The elastic element TBt allows to comply with the inquiries that consider applications in "drag condition" instead of in "thrust", both for choices of functioning and for assembly necessity. With this application the chain will be therefore stretched instead of pushed, as for the standard executions. For the technical specifications of this product, we suggest you to contact our technical department.

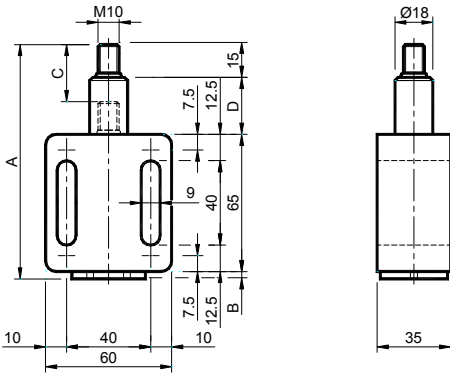
应用图片 / Application photos



TEN BLOC 弹簧式弹性组件 – 型号: TN 及 TNa

TEN BLOC Elastic spring elements – Type: TN and TNa

TN – TNa 10/20/30



材料 铝制主体配黄铜轴承。圆柱、堵盖、圆筒和弹簧均为钢制。

处理 喷砂铝，局部为镀锌钢，粗加工弹簧涂油。

应用 弹簧式弹性组件不具备预加压系统。链条或皮带的游隙通过弹簧的运动自动补偿。

C: 张紧装置行程。

MATERIALS Body made of aluminium with brushing made of brass. Column, cap, cylinders and spring made of steel.

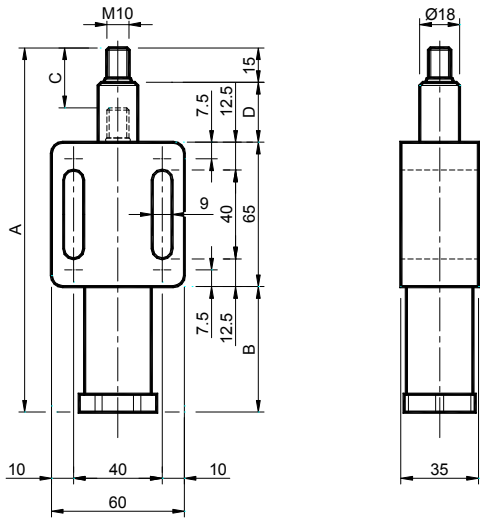
TREATMENTS Sandblasted aluminium, components made of galvanized steel, greased raw spring.

USE Elastic spring Element without preloading systems. The recover of chain- or belt- slack takes place automatically through the spring action.

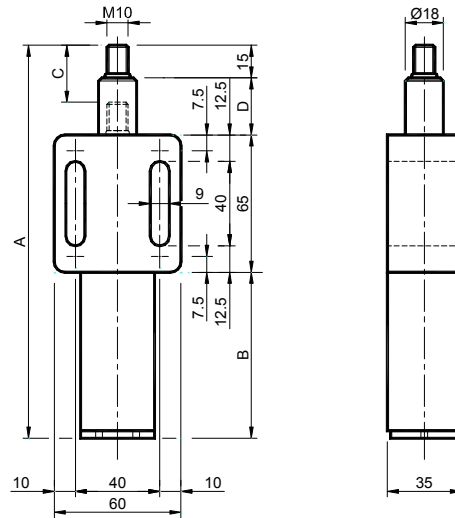
C: Tightener travel.



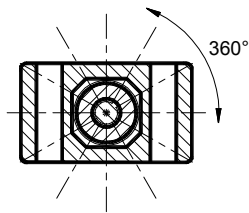
TN – TNa 40/50



TN – TNa 60/70/80/90



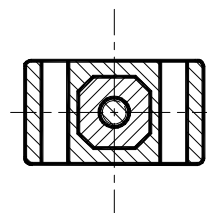
型号 TN – Type TN:



圆柱有可能绕其自身的轴扭转以便对张紧装置配件进行 360° 的调节。

The column HAS the possibility to rotate on its own axis to allow an adjustment on the 360° of the chaintightener kit.

型号 TNa – Type TNa:



圆柱不可能绕其自身的轴扭转。这个组件尤其适合与张紧装置配件一并使用。

The column HAS NOT the possibility to rotate on its own axis. This element is especially useful with the kits belt tighteners.

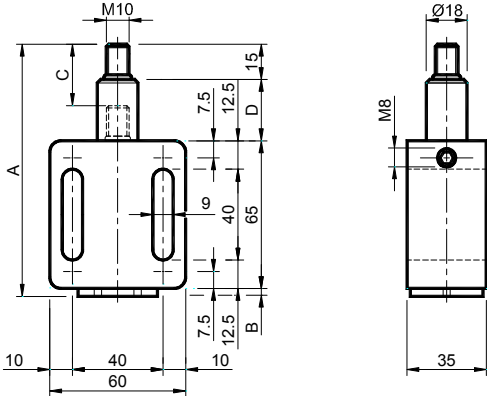


| 型号 Type | 编号 N° | A | B | C | D | Newton | 型号 Type | 编号 N° | 重量 - Weight in Kg |
|------------|----------|-------|-------|----|----|------------|------------|----------|----------------------|
| TN 10 | TB013000 | 110.5 | 3.5 | 26 | 27 | 30 ÷ 100 | TNa 10 | TB013040 | 0.40 |
| TN 20 | TB013001 | 110.5 | 3.5 | 25 | 27 | 60 ÷ 170 | TNa 20 | TB013041 | 0.40 |
| TN 30 | TB013002 | 110.5 | 3.5 | 24 | 27 | 90 ÷ 250 | TNa 30 | TB013042 | 0.40 |
| TN 40 | TB013003 | 135.5 | 28.5 | 27 | 27 | 100 ÷ 400 | TNa 40 | TB013043 | 0.47 |
| TN 50 | TB013004 | 180.0 | 58.0 | 42 | 42 | 180 ÷ 700 | TNa 50 | TB013044 | 0.60 |
| TN 60 | TB013005 | 210.5 | 88.5 | 42 | 42 | 220 ÷ 1000 | TNa 60 | TB013045 | 0.85 |
| TN 70 | TB013006 | 235.5 | 113.5 | 42 | 42 | 340 ÷ 1500 | TNa 70 | TB013046 | 1.00 |
| TN 80 | TB013007 | 235.5 | 113.5 | 42 | 42 | 400 ÷ 2000 | TNa 80 | TB013047 | 1.00 |
| TN 90 | TB013008 | 280.5 | 158.5 | 42 | 42 | 500 ÷ 2500 | TNa 90 | TB013048 | 1.28 |

TEN BLOC 弹簧式弹性组件 – 型号: TB e TBa

TEN BLOC Elastic spring elements – 型号: TB e TBa

TB – TBa 10/20/30



材料 铝制主体配黄铜轴承。圆柱、堵盖、圆筒和弹簧均为钢制。

处理 喷砂铝，局部为镀锌钢，粗加工弹簧涂油。

应用 弹簧式弹性组件具备预加压系统。链条或皮带的游隙通过弹簧的运动自动补偿。

C: 张紧装置行程。

MATERIALS Body made of aluminium with brushing made of brass. Column, cap, cylinders, screws and spring made of steel.

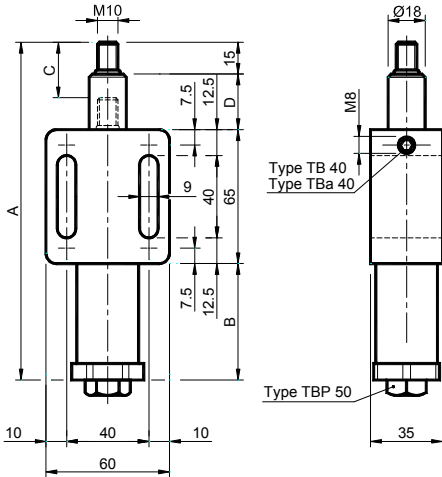
TREATMENTS Sandblasted aluminium, components made of galvanized steel, greased raw spring.

USE Elastic spring Element with preloading system. The recover of chain- or belt-slack takes place automatically through the spring action.

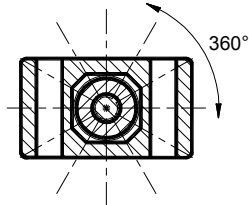
C: Tightener travel.



TB – TBa 40 / TBP 50



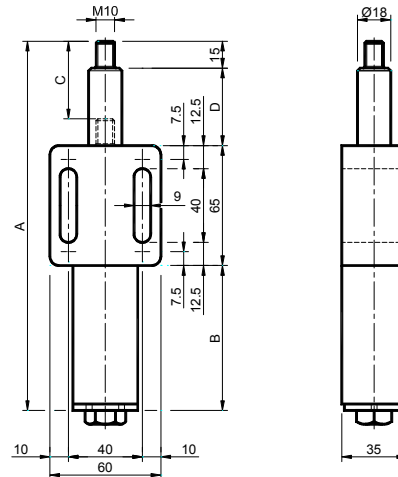
型号 TB – Type TB:



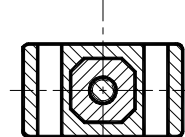
圆柱有可能绕其自身的轴扭转以便对张紧装置配件进行 360° 的调整。

The column HAS the possibility to rotate on its own axis to allow an adjustment on the 360° of the chaintightener kit.

TBP 60/70/80/90



型号 TBa – Type TBa:

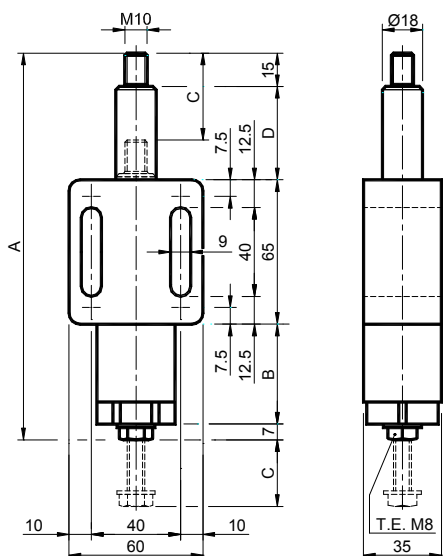



圆柱不可能绕其自身的轴扭转。这个组件尤其适合与张紧装置配件一并使用。

The column HAS NOT the possibility to rotate on its own axis. This element is especially useful with the belt tighteners.

| 型号 Type | 编号 N° | A | B | C | D | Newton | 型号 Type | 编号 N° | 重量 - Weight in Kg |
|------------|----------|-------|-------|----|----|------------|------------|----------|----------------------|
| TB 10 | TB013020 | 110.5 | 3.5 | 26 | 27 | 30 ÷ 100 | TBa 10 | TB013060 | 0.40 |
| TB 20 | TB013021 | 110.5 | 3.5 | 25 | 27 | 60 ÷ 170 | TBa 20 | TB013061 | 0.40 |
| TB 30 | TB013022 | 110.5 | 3.5 | 24 | 27 | 90 ÷ 250 | TBa 30 | TB013062 | 0.40 |
| TB 40 | TB013023 | 132.0 | 25.0 | 27 | 27 | 100 ÷ 400 | TBa 40 | TB013063 | 0.47 |
| TBP 50 | TB013024 | 180.0 | 58.0 | 42 | 42 | 180 ÷ 700 | | | 0.60 |
| TBP 60 | TB013025 | 210.5 | 88.5 | 42 | 42 | 220 ÷ 1000 | | | 0.85 |
| TBP 70 | TB013026 | 235.5 | 113.5 | 42 | 42 | 340 ÷ 1500 | | | 1.00 |
| TBP 80 | TB013027 | 235.5 | 113.5 | 42 | 42 | 400 ÷ 2000 | | | 1.00 |
| TBP 90 | TB013028 | 280.5 | 158.5 | 42 | 42 | 500 ÷ 2500 | | | 1.28 |

TEN BLOC“单向”弹簧式弹性组件 – 型号: TBB
TEN BLOC Elastic spring Element “One-directional” – Type: TBB




 **材料** 铝制主体配黄铜轴承。圆柱、堵盖、圆筒和弹簧均为钢制。

处理 喷砂铝，局部为镀锌钢，粗加工弹簧涂油。

应用 “单向”弹簧式弹性组件。链条或皮带的游隙通过弹簧的运动自动补偿。“单向”命名意指圆柱只能作推出动作，不可自由地重新进入。

C: 张紧装置行程。

 **MATERIALS** Body made of aluminium with brushing made of brass. Column, cap, cylinders, screw and spring made of steel.

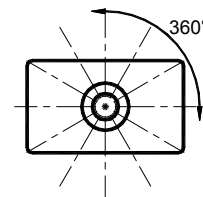
TREATMENTS Sandblasted aluminium, components made of galvanized steel, greased raw spring.

USE Elastic spring Element “one-directional”. The recover of chain- or belt- slack takes place automatically through the spring action. The word “one-directional” means that the column has a movement only in thrust and it isn’t free to reenter.

C: Tightener travel.



| 型号 Type | 编号 N° | A | B | C | D | Newton | 重量 Weight in Kg |
|------------|----------|-----|-----|----|----|------------|-----------------------|
| TBB 10 | TB013080 | 145 | 28 | 30 | 30 | 30 ÷ 100 | 0.57 |
| TBB 20 | TB013081 | 145 | 28 | 30 | 30 | 60 ÷ 170 | 0.57 |
| TBB 30 | TB013082 | 145 | 28 | 30 | 30 | 90 ÷ 250 | 0.57 |
| TBB 40 | TB013083 | 162 | 45 | 30 | 30 | 100 ÷ 400 | 0.63 |
| TBB 50 | TB013084 | 187 | 70 | 30 | 30 | 180 ÷ 700 | 0.75 |
| TBB 60 | TB013085 | 234 | 105 | 40 | 42 | 220 ÷ 1000 | 0.95 |
| TBB 70 | TB013086 | 259 | 130 | 40 | 42 | 340 ÷ 1500 | 1.10 |
| TBB 80 | TB013087 | 259 | 130 | 40 | 42 | 400 ÷ 2000 | 1.10 |
| TBB 90 | TB013088 | 309 | 180 | 42 | 42 | 500 ÷ 2500 | 1.40 |



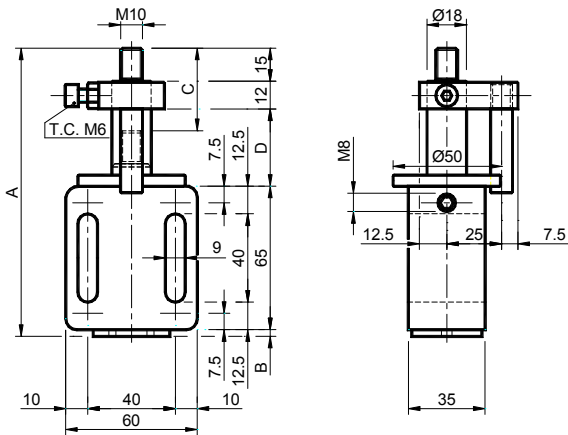
圆柱有可能绕其自身的轴扭转以便对配件进行 360° 的调节。

The column HAS the possibility to rotate on its own axis to allow an adjustment on the 360° of the contrast kit.



TEN BLOC “抗扭转”弹簧式弹性组件– 型号: TBA
TEN BLOC Elastic spring elements “anti-rotation” – Type: TBA

TBA 10/20/30



材料 铝制主体配黄铜轴承。套环为黄铜制。圆柱、堵盖、圆筒、小金属板、螺钉、桩销和弹簧均为钢制。

处理 喷砂铝，局部为镀锌钢，粗加工弹簧涂油。

应用 “抗扭转”弹簧式弹性组件。链条或皮带的游隙通过弹簧的运动自动补偿。“抗扭转”命名意指圆柱在安装之后，不可自由地在 360° 角度内扭转。

C: 张紧装置行程。

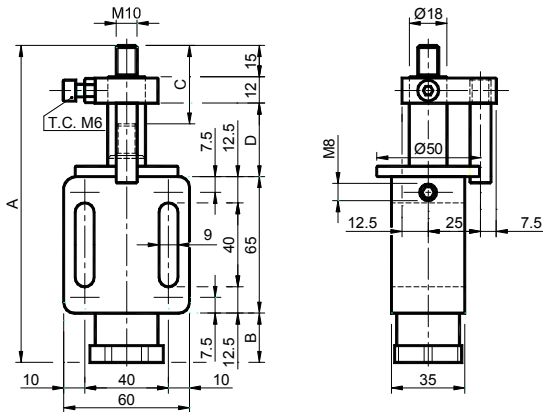
MATERIALS Body made of aluminium with brushing made of brass. Collar made of brass. Column, cap, cylinders, plate, stake, screw and spring made of steel.

TREATMENTS Sandblasted aluminium, components made of galvanized steel, greased raw spring.

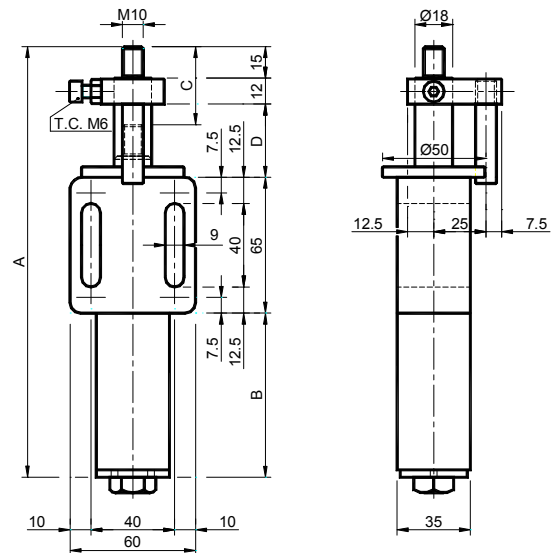
USE Elastic spring Element “anti-rotation”. The recover of chain- or belt- slack takes place automatically through the spring action. The word “anti-rotation” means that the column, when it is positioned, it isn't no more free to rotate to 360°. C: Tightener travel



TBA 40



TBAP 50/60/70/80/90

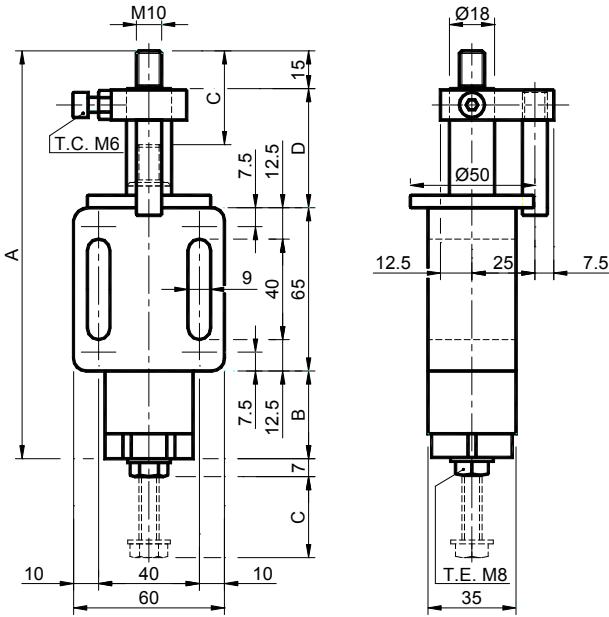


| 型号 Type | 编号 N° | A | B | C | D | Newton | 重量 Weight in Kg |
|------------|----------|-------|-------|----|----|------------|-----------------------|
| TBA 10 | TB013100 | 125.5 | 3.5 | 30 | 30 | 30 ÷ 100 | 0.58 |
| TBA 20 | TB013101 | 125.5 | 3.5 | 30 | 30 | 60 ÷ 170 | 0.58 |
| TBA 30 | TB013102 | 125.5 | 3.5 | 30 | 30 | 90 ÷ 250 | 0.58 |
| TBA 40 | TB013103 | 147.0 | 25.0 | 30 | 30 | 100 ÷ 400 | 0.65 |
| TBAP 50 | TB013104 | 160.5 | 38.5 | 30 | 30 | 180 ÷ 700 | 0.80 |
| TBAP 60 | TB013105 | 195.5 | 73.5 | 30 | 30 | 220 ÷ 1000 | 0.98 |
| TBAP 70 | TB013106 | 220.5 | 98.5 | 30 | 30 | 340 ÷ 1500 | 1.10 |
| TBAP 80 | TB013107 | 220.5 | 98.5 | 30 | 30 | 400 ÷ 2000 | 1.20 |
| TBAP 90 | TB013108 | 265.5 | 143.5 | 30 | 30 | 500 ÷ 2500 | 1.40 |



TEN BLOC“抗扭转”“单向”弹簧式弹性组件 – 型号: TBAB

TEN BLOC Elastic spring Elements “anti-rotation” “one-directional” – Type: TBAB



材料 铝制主体配黄铜轴承。套环为黄铜制。圆柱、堵盖、圆筒、小金属板、螺钉、桩销和弹簧均为钢制。

处理 喷砂铝，局部为镀锌钢，粗加工弹簧涂油。

应用 “抗扭转”“单向”弹簧式弹性组件。链条或皮带的游隙通过弹簧的运动自动补偿。“抗扭转”命名意指圆柱在安装之后，不可自由地在 360°角度扭转。“单向”命名意指圆柱只能作推出动作，不能自由地重新进入。

C: 张紧装置行程。



MATERIALS Body made of aluminium with brushing made of brass. Collar made of brass. Column, cap, cylinders, plate, stake, screw and spring made of steel.

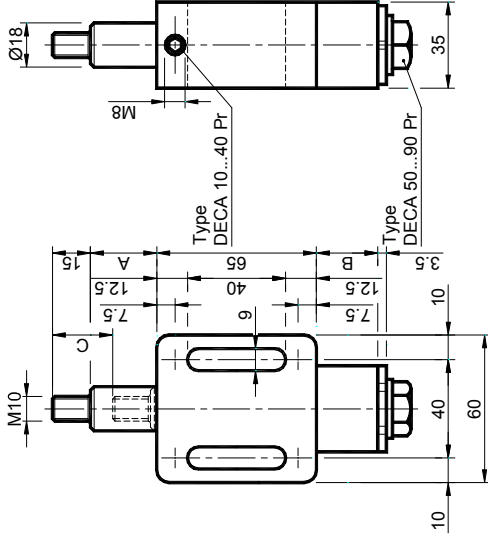
TREATMENTS Sandblasted aluminium, components made of galvanized steel, greased raw spring.

USE Elastic spring Element “anti-rotation” and “one-directional”. The recover of chain- or belt- slack takes place automatically through the spring action. The word “anti-rotation” means that the column, when it is positioned, it isn’t no more free to rotate to 360°. The word “one-directional” means that the column has a movement only in thrust and it isn’t free to reenter.

C: Tightener travel.

| 型号 Type | 编号 N° | A | B | C | D | Newton | 重量 Weight in Kg |
|------------|----------|-----|-----|----|----|------------|-----------------------|
| TBAB 10 | TB013120 | 145 | 35 | 27 | 30 | 30 ÷ 100 | 0.80 |
| TBAB 20 | TB013121 | 145 | 35 | 27 | 30 | 60 ÷ 170 | 0.80 |
| TBAB 30 | TB013122 | 145 | 35 | 26 | 30 | 90 ÷ 250 | 0.80 |
| TBAB 40 | TB013123 | 155 | 45 | 30 | 30 | 100 ÷ 400 | 0.84 |
| TBAB 50 | TB013124 | 170 | 60 | 30 | 30 | 180 ÷ 700 | 0.93 |
| TBAB 60 | TB013125 | 205 | 95 | 30 | 30 | 220 ÷ 1000 | 1.10 |
| TBAB 70 | TB013126 | 225 | 115 | 30 | 30 | 340 ÷ 1500 | 1.22 |
| TBAB 80 | TB013127 | 225 | 115 | 30 | 30 | 400 ÷ 2000 | 1.24 |
| TBAB 90 | TB013128 | 270 | 160 | 30 | 30 | 500 ÷ 2500 | 1.60 |





TEN BLOC 弹簧式弹性组件 – 型号: DECA

TEN BLOC 弹簧式弹性组件 – 型号: DECA Pr 具预加压系统

TEN BLOC Elastic spring Elements – Type: DECA

TEN BLOC Elastic spring Elements – Type: DECA Pr with preloading system

材料 铝制主体配黄铜轴承。套环为黄铜制。圆柱、堵盖、圆筒、小金属板、螺钉、柱销和弹簧均为钢制。

处理 喷砂铝，局部为镀锌钢，粗加工弹簧涂油。

应用 弹簧式弹性组件。可用于链条张紧或皮带张紧装置但也可用于减震、减速或缓冲。

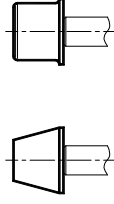
为了简化安装操作，可配备预加压系统 (型号 DECA Pr)。 C: 组件行程。

MATERIALS Body made of aluminium with brushing made of brass. Column, cap, cylinders, screw and springs made of steel.

TREATMENTS Sandblasted aluminium, components made of galvanized steel, greased raw spring.

USE Elastic spring Element. It can be used as chain tightener or belt tightener but also as shock absorber, decelerator and buffer.

You can have them with preloading system in order to facilitate the assembling operations (type DECA Pr). C: Element travel.



根据需要提供配件

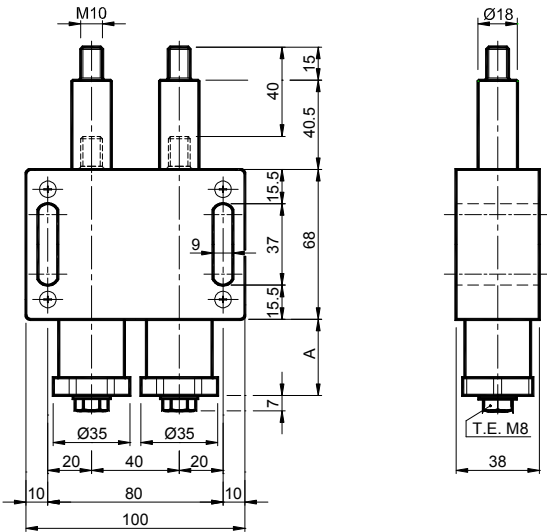
Accessories on request

| DECA 型号 Type | M27 | | | M35 | | | M42 | | | M80 | | | M130 | | | M200 | | | Newton | | | | | | | | |
|--------------------|----------|----|----|-----|-------|----------|-----|-----|-------|----------|----|-----|-------|----------|----|------|-------|----------|--------|-----|-----|----------|-----|-----|-----|------|------|
| | 编号 N° | A | B | C | 编号 N° | A | B | C | 编号 N° | A | B | C | 编号 N° | A | B | C | 编号 N° | A | | B | C | | | | | | |
| DECA 10 | TB020001 | 27 | 0 | 27 | 33 | TB020002 | 35 | 25 | 33 | TB020003 | 42 | 35 | 42 | TB020004 | 80 | 100 | 80 | TB020005 | 130 | 175 | 130 | TB020006 | 200 | 275 | 200 | 30± | 100 |
| DECA 20 | TB020011 | 27 | 0 | 27 | 33 | TB020012 | 35 | 25 | 33 | TB020013 | 42 | 35 | 42 | TB020014 | 80 | 100 | 80 | TB020015 | 130 | 175 | 130 | TB020016 | 200 | 275 | 200 | 60± | 170 |
| DECA 30 | TB020021 | 27 | 0 | 27 | 33 | TB020022 | 35 | 25 | 33 | TB020023 | 42 | 35 | 42 | TB020024 | 80 | 100 | 80 | TB020025 | 130 | 175 | 130 | TB020026 | 200 | 275 | 200 | 90± | 250 |
| DECA 40 | TB020031 | 27 | 25 | 27 | 33 | TB020032 | 35 | 25 | 33 | TB020033 | 42 | 75 | 42 | TB020034 | 80 | 110 | 80 | TB020035 | 130 | 235 | 130 | TB020036 | 200 | 375 | 200 | 100± | 400 |
| DECA 50 | TB020041 | 27 | 50 | 27 | 35 | TB020042 | 35 | 50 | 35 | TB020043 | 42 | 55 | 42 | TB020044 | 80 | 150 | 80 | TB020045 | 130 | 250 | 130 | TB020046 | 200 | 425 | 197 | 180± | 400 |
| DECA 60 | TB020051 | 27 | 50 | 27 | 35 | TB020052 | 35 | 75 | 35 | TB020053 | 42 | 85 | 42 | TB020054 | 80 | 210 | 80 | TB020055 | 130 | 350 | 130 | TB020056 | 200 | 585 | 200 | 220± | 1000 |
| DECA 70 | TB020061 | 27 | 50 | 27 | 35 | TB020062 | 35 | 100 | 35 | TB020063 | 42 | 110 | 42 | TB020064 | 80 | 260 | 80 | TB020065 | 130 | 425 | 130 | TB020066 | 200 | 700 | 197 | 340± | 1500 |
| DECA 80 | TB020071 | 27 | 50 | 27 | 35 | TB020072 | 35 | 100 | 35 | TB020073 | 42 | 110 | 40 | TB020074 | 80 | 260 | 80 | TB020075 | 130 | 425 | 130 | TB020076 | 200 | 700 | 197 | 400± | 2000 |
| DECA 90 | TB020081 | 27 | 75 | 27 | 35 | TB020082 | 35 | 125 | 35 | TB020083 | 42 | 135 | 42 | TB020084 | 80 | 300 | 80 | TB020085 | 130 | 460 | 130 | TB020086 | 200 | 750 | 198 | 500± | 2500 |

TEN BLOC 弹簧式弹性组件 – 型号: TB80 A / TB80 F

Elastic spring Elements *TEN BLOC* – Type: *TB80 A / TB80 F*

TB 80 A



材料 内部主体为铝制。外部金属板、圆柱、圆筒、螺钉和弹簧均为钢制。

处理 喷砂铝，圆柱、圆筒和螺钉为镀锌钢，粗加工弹簧涂油。

应用 带槽盒状主体的弹簧式弹性组件。链条或皮带的游隙通过弹簧的运动自动补偿。这个组件的力量为单组件的两倍。在张紧装置的堵盖上已配备用于预加压操作的螺钉。

C: 张紧装置行程 40mm。

MATERIALS Inner bodies made of aluminium. External plates, columns, cylinders, screws and springs made of steel.

TREATMENTS Painted plates. Columns, cylinders and screws made of galvanized steel, greased raw spring.

USE Elastic spring element with external structured steel. The recover of chain- or belt-slack takes place automatically through the spring action. The force of this element is twice that of a single element. The screws that come out from the caps of the tensioner are used for the operations of preloading.

C: Tightener travel: 40 mm.



| 型号 Type | 编号 N° | A | Newton | 重量 Weight in Kg | 型号 Type | 编号 N° |
|-------------|----------|------|---------|-----------------------|-------------|----------|
| TB80 A 2•10 | TB013160 | 25.0 | 0 ÷ 200 | 1.10 | TB80 F 2•10 | TB013170 |
| TB80 A 2•20 | TB013161 | 25.0 | 0 ÷ 340 | 1.10 | TB80 F 2•20 | TB013171 |
| TB80 A 2•30 | TB013162 | 25.0 | 0 ÷ 500 | 1.10 | TB80 F 2•30 | TB013172 |
| TB80 A 2•40 | TB013163 | 56.5 | 0 ÷ 800 | 1.30 | TB80 F 2•40 | TB013173 |



TB 80 F



材料 内部主体为铝制。外部金属板、圆柱、圆筒、螺钉和弹簧均为钢制。

处理 金属板涂漆。圆柱、圆筒和螺钉镀锌，粗加工弹簧涂油。

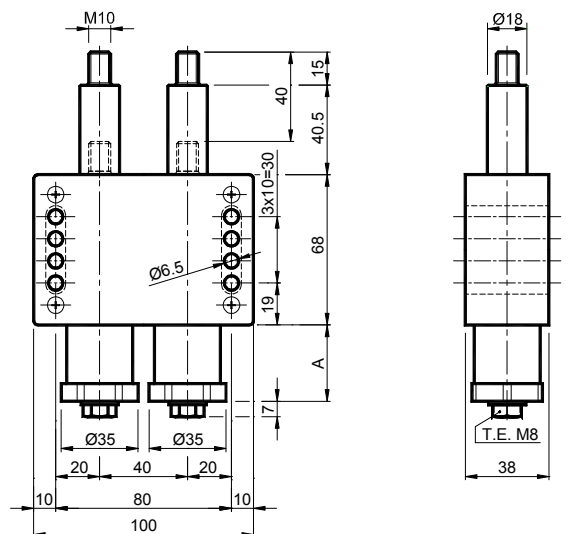
应用 带孔盒状主体的弹簧式弹性组件。链条或皮带的游隙通过弹簧的运动自动补偿。这个组件的力量为单组件的两倍。在张紧装置的堵盖上已配备用于预加压操作的螺钉。C: 张紧装置行程 40mm。

MATERIALS Inner bodies made of aluminium. External plates, columns, cylinders, screws and springs made of steel.

TREATMENTS Painted plates. Columns, cylinders and screws made of galvanized steel, greased raw spring.

USE Elastic spring element with external structured steel. The recover of chain- or belt-slack takes place automatically through the spring action. The force of this element is twice that of a single element. The screws that come out from the caps of the tensioner are used for the operations of preloading.

C: Tightener travel: 40mm.

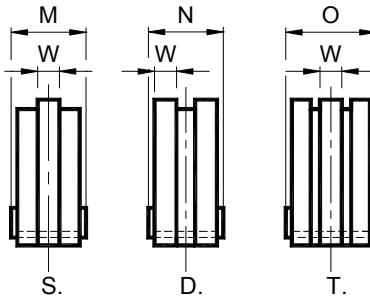
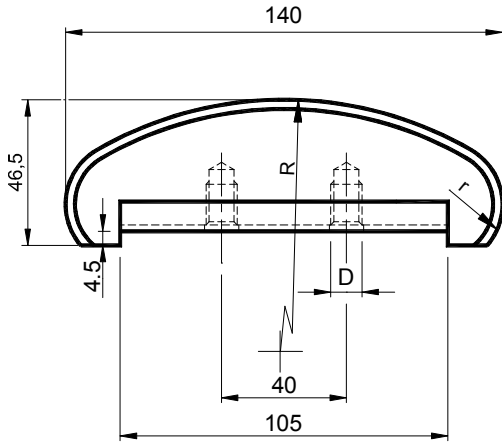


张紧装置配套元件 / KIT for chain tighteners

聚乙烯滑块 – 型号: **V80** / Polyethylene sliding block – Type: **V80**

仅用于 Ten Bloc 弹性组件 – 型号: **TB80A/F**

For the Elastic Elements Ten Bloc only – Type: **TB80A/F**



材料 高分子密度聚乙烯滑块。配备钢制坚硬轮廓。

应用 具半圆形轮廓适用于大轴距。

工作速度 ≤20 米 / 分。

工作温度 ≤70°C。

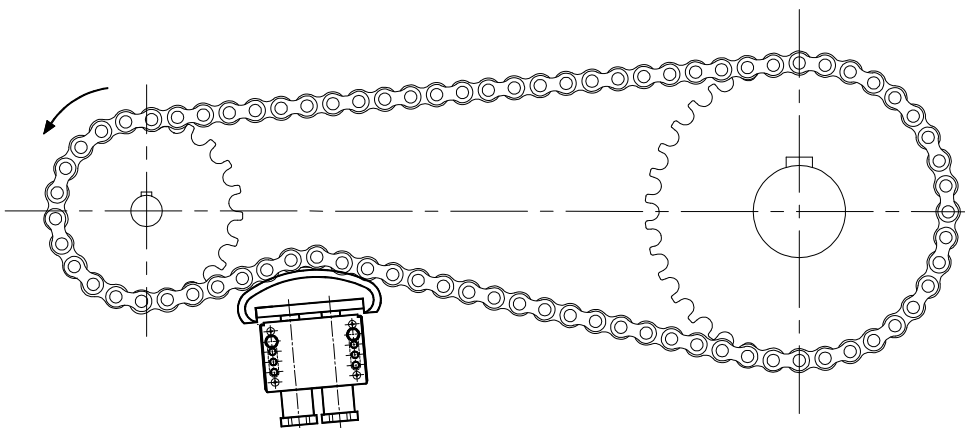
MATERIALS Sliding block made of polyethylene, high molecular density, with steel profile stiffness.

USE Semicircular profile wide-ranging indicated for large distances between centres.

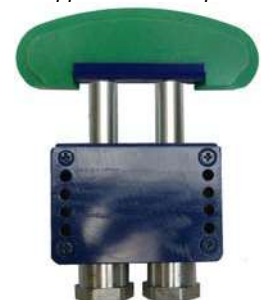
Operating speed ≤20 m/min.

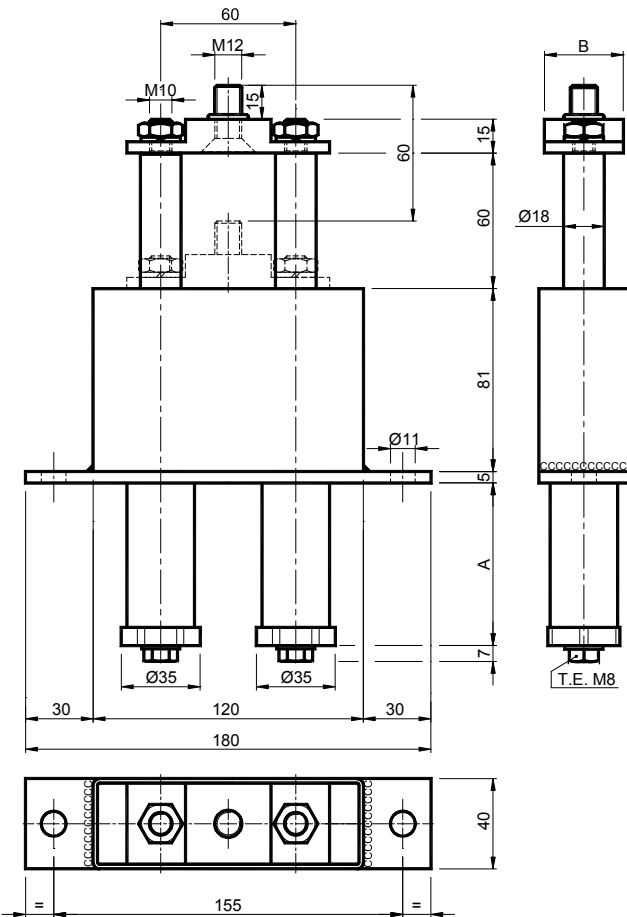
Operating temperature ≤70°C.

| 型号 Type | S 编号 N° | D 编号 N° | T 编号 N° | 链条 Chain | r | R | W | M | N | O | D | 重量 Weight in Kg | | |
|------------|------------|------------|------------|--------------|----|-----|-----|----|----|----|-----|--------------------|------|------|
| | | | | | | | | | | | | S. | D. | T. |
| V80 10-0 | TB013300 | TB013310 | TB013320 | 8mm | 20 | 120 | 2.5 | 24 | 24 | 24 | M10 | 0.13 | 0.14 | 0.15 |
| V80 10-1 | TB013301 | TB013311 | TB013321 | 3/8" x 7/32" | 20 | 120 | 5 | 24 | 24 | 29 | M10 | 0.14 | 0.14 | 0.16 |
| V80 20-1 | TB013301 | TB013311 | TB013321 | 3/8" x 7/32" | 20 | 120 | 5 | 24 | 24 | 29 | M10 | 0.14 | 0.14 | 0.16 |
| V80 10-2 | TB013302 | TB013312 | TB013322 | 1/2" x 5/16" | 20 | 120 | 7 | 24 | 24 | 29 | M10 | 0.14 | 0.14 | 0.16 |
| V80 20-2 | TB013302 | TB013312 | TB013322 | 1/2" x 5/16" | 20 | 120 | 7 | 24 | 24 | 29 | M10 | 0.14 | 0.14 | 0.16 |
| V80 30-2 | TB013302 | TB013312 | TB013322 | 1/2" x 5/16" | 20 | 120 | 7 | 24 | 24 | 29 | M10 | 0.14 | 0.14 | 0.16 |
| V80 30-3 | TB013303 | TB013313 | TB013323 | 5/8" x 3/8" | 20 | 140 | 9 | 24 | 24 | 29 | M10 | 0.16 | 0.18 | 0.36 |
| V80 40-3 | TB013303 | TB013313 | TB013323 | 5/8" x 3/8" | 20 | 140 | 9 | 24 | 24 | 29 | M10 | 0.16 | 0.18 | 0.36 |
| V80 30-4 | TB013304 | TB013314 | TB013324 | 3/4" x 7/16" | 20 | 140 | 11 | 24 | 34 | 46 | M10 | 0.18 | 0.33 | 0.41 |
| V80 40-4 | TB013304 | TB013314 | TB013324 | 3/4" x 7/16" | 20 | 140 | 11 | 24 | 34 | 46 | M10 | 0.18 | 0.33 | 0.41 |
| V80 40-5 | TB013305 | TB013315 | TB013325 | 1" x 17.02mm | 20 | 140 | 16 | 29 | 49 | 54 | M10 | 0.26 | 0.56 | 0.86 |
| V80 50-5 | TB013305 | TB013315 | TB013325 | 1" x 17.02mm | 20 | 140 | 16 | 29 | 49 | 54 | M10 | 0.26 | 0.56 | 0.86 |
| V80 50-6 | TB013306 | TB013316 | TB013326 | 1"1/4 x 3/4" | 20 | 140 | 18 | 29 | / | / | M10 | 0.26 | 0.60 | 0.90 |
| V80 50-7 | TB013307 | TB013317 | TB013327 | 1"1/2 x 1" | 20 | 140 | 24 | 29 | / | / | M10 | 0.30 | 0.70 | 1.00 |



应用实例
Application example



TEN BLOC 弹簧式弹性组件 – 型号 TB2-40 / Elastic spring Elements TEN BLOC – Type TB2-40


材料 内部主体为铝制。外部结构、圆柱、圆筒、螺钉和弹簧均为钢制。

处理 外部结构为镀锌。圆柱、圆筒和螺钉为镀锌钢，粗加工弹簧涂油。

应用 具有固定平面的盒状主体中含弹簧的弹性组件。链条或皮带的游隙通过弹簧的运动自动补偿。这个组件的力量为单组件的两倍。在张紧装置的堵盖上已配备用于预加压操作的螺钉。

C: 张紧装置行程 60mm。

MATERIALS Aluminium internal structure. External structure steel, columns, cylinders, screws and springs made of steel.

TREATMENTS Painted external structure steel. Galvanised columns, cylinders and screws, greased raw springs.

USE Elastic element with spring in box structure with fixing surface. Chain or belt backlash is recovered automatically through the action of the springs; the strength of this element is double that of a single element. The tensioner already has screws in its stoppers for preloading. Tensioner stroke 60 mm.

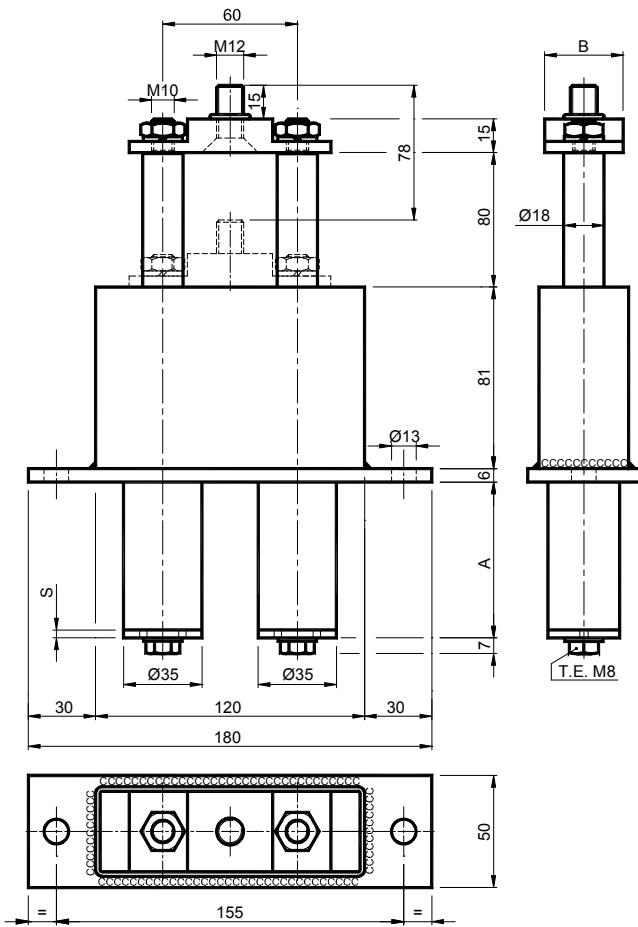
| 型号 Type | 编号 N° | A | B | Newton | 重量 Weight in Kg |
|-------------|----------|-----|----|---------|-----------------------|
| TB2-40 2•10 | TB013180 | 50 | 35 | 0 ÷ 200 | 2.60 |
| TB2-40 2•20 | TB013181 | 50 | 35 | 0 ÷ 340 | 2.60 |
| TB2-40 2•30 | TB013182 | 50 | 35 | 0 ÷ 500 | 2.60 |
| TB2-40 2•40 | TB013183 | 100 | 35 | 0 ÷ 800 | 3.20 |

使用第 55 页的配件 2V 安装: / Assembled with the 2V kit of page 55:

| 型号 Type | B | 型号 Type | B | 型号 Type | B |
|-------------|----|-------------|----|-------------|----|
| 2V 2•40-5 S | 20 | 2V 2•40-5 D | 35 | 2V 2•40-5 T | 35 |
| 2V 2•40-6 S | 20 | 2V 2•40-6 D | 35 | 2V 2•40-6 T | 35 |
| 2V 2•50-7 S | 25 | 2V 2•50-7 D | 35 | 2V 2•50-7 T | 35 |
| 2V 2•50-8 S | 25 | 2V 2•50-8 D | 35 | | |
| 2V 2•60-9 S | 25 | 2V 2•60-9 D | 35 | | |



TEN BLOC 弹簧式弹性组件 - 型号 TB2-50 / Elastic spring Elements TEN BLOC - Type TB2-50



材料 内部主体为铝制。外部结构、圆柱、圆筒、螺钉和弹簧均为钢制。

处理 外部结构涂漆。圆柱、圆筒和螺钉镀锌，粗加工弹簧涂油。

应用 具有固定平面盒状主体中含弹簧的弹性组件。链条或皮带的游隙通过弹簧的运动自动补偿。这个组件的力量为单组件的两倍。在张紧装置的堵盖上已配备用于预加压操作的螺钉。

C: 张紧装置行程 78mm。

MATERIALS Aluminium internal structures. External structure steel, columns, cylinders, screws and springs made of steel.

TREATMENTS Painted external structure steel. Galvanised columns, cylinders and screws, greased raw springs.

USE Elastic element with spring in box structure with fixing surface. Chain or belt backlash is recovered automatically through the action of the springs; the strength of this element is double that of a single element. The tensioner already has screws in its stoppers for preloading.
Tensioner stroke 78 mm.








| 型号 Type | 编号 N° | A | B | S | Newton | 重量 Weight in Kg |
|-------------|----------|-------|----|-----|----------|-----------------------|
| TB2-50 2•10 | TB013190 | / | 35 | 10 | 0 ÷ 200 | 2.10 |
| TB2-50 2•20 | TB013191 | / | 35 | 10 | 0 ÷ 340 | 2.10 |
| TB2-50 2•30 | TB013192 | / | 35 | 10 | 0 ÷ 500 | 2.10 |
| TB2-50 2•40 | TB013193 | 113.5 | 35 | 3.5 | 0 ÷ 800 | 2.30 |
| TB2-50 2•50 | TB013194 | 153.5 | 35 | 3.5 | 0 ÷ 1400 | 3.20 |
| TB2-50 2•60 | TB013195 | 213.5 | 35 | 3.5 | 0 ÷ 2000 | 3.60 |
| TB2-50 2•70 | TB013196 | 263.5 | 35 | 3.5 | 0 ÷ 3000 | 4.10 |
| TB2-50 2•80 | TB013197 | 263.5 | 35 | 3.5 | 0 ÷ 4000 | 4.10 |
| TB2-50 2•90 | TB013198 | 338.5 | 35 | 3.5 | 0 ÷ 5000 | 4.60 |

使用第 55 页的配件 2V 安装: / Assembled with the 2V kit of page 55:

| 型号 | B | 型号 | B | 型号 | B |
|-------------|----|-------------|----|-------------|----|
| 2V 2•40-5 S | 20 | 2V 2•40-5 D | 35 | 2V 2•40-5 T | 35 |
| 2V 2•40-6 S | 20 | 2V 2•40-6 D | 35 | 2V 2•40-6 T | 35 |
| 2V 2•50-7 S | 25 | 2V 2•50-7 D | 35 | 2V 2•50-7 T | 35 |
| 2V 2•50-8 S | 25 | 2V 2•50-8 D | 35 | | |
| 2V 2•60-9 S | 25 | 2V 2•60-9 D | 35 | | |

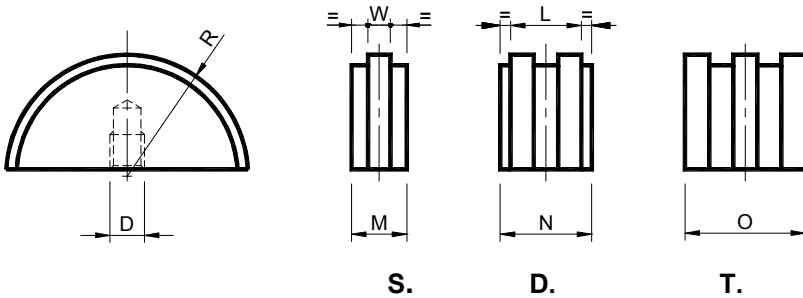


配套元件选择列表 / KIT selection table

| 链条 - Chain (DIN 8187) | | 型号 - Type | | | | 尺寸 - Size | 型号 - Type | | 最高皮带宽度 [mm] Max belt width [mm] |
|---|--------------|---|---|---|---|-----------|---|---|------------------------------------|
| ISO | 节距 Pitch | V | L | RF | RR | | RAU | RAP | |
|  | |  |  |  |  | |  |  | |
| | | 第 49 页 | 第 50 页 | 第 51 页 | 第 52 页 | | 第 53 页 | 第 53 页 | |
| 05-B1 | 8 mm | V10-0 S | L10-0 S | RF10-0 S | / | 10 | | | |
| 06-B1 | 3/8" x 7/32" | V10-1 S | L10-1 S | RF10-1 S | RR10-1 S | 10 | | | |
| 06-B1 | 3/8" x 7/32" | V20-1 S | L20-1 S | RF20-1 S | RR20-1 S | 20 | RAU 1 | RAP 1 | 30 |
| 08-B1 | 1/2" x 5/16" | V10-2 S | L10-2 S | RF10-2 S | RR10-2 S | 10 | | | |
| 08-B1 | 1/2" x 5/16" | V20-2 S | L20-2 S | RF20-2 S | RR20-2 S | 20 | | | |
| 08-B1 | 1/2" x 5/16" | V30-2 S | L30-2 S | RF30-2 S | RR30-2 S | 30 | RAU 2/3 | RAP 2/3 | 40 |
| 10-B1 | 5/8" x 3/8" | V30-3 S | L30-3 S | RF30-3 S | RR30-3 S | 30 | | | |
| 10-B1 | 5/8" x 3/8" | V40-3 S | L40-3 S | RF40-3 S | RR40-3 S | 40 | | | |
| 12-B1 | 3/4" x 7/16" | V30-4 S | L30-4 S | RF30-4 S | RR30-4 S | 30 | | | |
| 12-B1 | 3/4" x 7/16" | V40-4 S | L40-4 S | RF40-4 S | RR40-4 S | 40 | | | |
| 16-B1 | 1" x 17.02mm | V40-5 S | L40-5 S | RF40-5 S | RR40-5 S | 40 | | | |
| 16-B1 | 1" x 17.02mm | V50-5 S | L50-5 S | RF50-5 S | RR50-5 S | 50 | RAU 4-10 | RAP 4-10 | 55 |
| 20-B1 | 1"1/4 x 3/4" | V50-6 S | L50-6 S | RF50-6 S | / | 50 | | | |
| 24-B1 | 1"1/2 x 1" | V50-7 S | L50-7 S | RF50-7 S | / | 50 | | | |
| | | | | | | 60 | RAU 5-10 | RAP 5-10 | 85 |
| | | | | | | | RAU 6-10 | RAP 6-10 | 130 |
| 05-B2 | 8 mm | V10-0 D | L10-0 D | RF10-0 D | / | 10 | | | |
| 06-B2 | 3/8" x 7/32" | V10-1 D | L10-1 D | RF10-1 D | RR10-1 D | 10 | | | |
| 06-B2 | 3/8" x 7/32" | V20-1 D | L20-1 D | RF20-1 D | RR20-1 D | 20 | | | |
| 08-B2 | 1/2" x 5/16" | / | / | RF10-2 D | RR10-2 D | 10 | | | |
| 08-B2 | 1/2" x 5/16" | V20-2 D | L20-2 D | RF20-2 D | RR20-2 D | 20 | | | |
| 08-B2 | 1/2" x 5/16" | V30-2 D | L30-2 D | RF30-2 D | RR30-2 D | 30 | | | |
| 10-B2 | 5/8" x 3/8" | V30-3 D | L30-3 D | RF30-3 D | RR30-3 D | 30 | | | |
| 10-B2 | 5/8" x 3/8" | V40-3 D | L40-3 D | RF40-3 D | RR40-3 D | 40 | | | |
| 12-B2 | 3/4" x 7/16" | V30-4 D | L30-4 D | RF30-4 D | RR30-4 D | 30 | | | |
| 12-B2 | 3/4" x 7/16" | V40-4 D | L40-4 D | RF40-4 D | RR40-4 D | 40 | | | |
| 16-B2 | 1" x 17.02mm | V40-5 D | L40-5 D | RF40-5 D | RR40-5 D | 40 | | | |
| 16-B2 | 1" x 17.02mm | V50-5 D | L50-5 D | RF50-5 D | RR50-5 D | 50 | | | |
| 20-B2 | 1"1/4 x 3/4" | / | / | / | / | 50 | | | |
| 24-B2 | 1"1/2 x 1" | / | / | / | / | 50 | | | |
| 06-B3 | 3/8" x 7/32" | / | / | RF10-1 T | / | 10 | | | |
| 06-B3 | 3/8" x 7/32" | V20-1 T | L20-1 T | RF20-1 T | / | 20 | | | |
| 08-B3 | 1/2" x 5/16" | / | / | RF10-2 T | / | 10 | | | |
| 08-B3 | 1/2" x 5/16" | V20-2 T | L20-2 T | RF20-2 T | / | 20 | | | |
| 08-B3 | 1/2" x 5/16" | V30-2 T | L30-2 T | RF30-2 T | / | 30 | | | |
| 10-B3 | 5/8" x 3/8" | V30-3 T | L30-3 T | RF30-3 T | / | 30 | | | |
| 10-B3 | 5/8" x 3/8" | V40-3 T | L40-3 T | RF40-3 T | / | 40 | | | |
| 12-B3 | 3/4" x 7/16" | V30-4 T | L30-4 T | RF30-4 T | / | 30 | | | |
| 12-B3 | 3/4" x 7/16" | V40-4 T | L40-4 T | RF40-4 T | / | 40 | | | |
| 16-B3 | 1" x 17.02mm | V40-5 T | L40-5 T | / | / | 40 | | | |
| 16-B3 | 1" x 17.02mm | V50-5 T | L50-5 T | / | / | 50 | | | |

张紧装置配套元件 / KIT for chain tighteners

聚乙烯滑块 – 型号: V / Polyethylene sliding block – Type: V



材料 高分子密度聚乙烯滑块。

应用 具半圆形轮廓的滑块 V 适用于小轴距或者靠近电动机链轮位置的安装。

工作速度 ≤20 米 / 分。

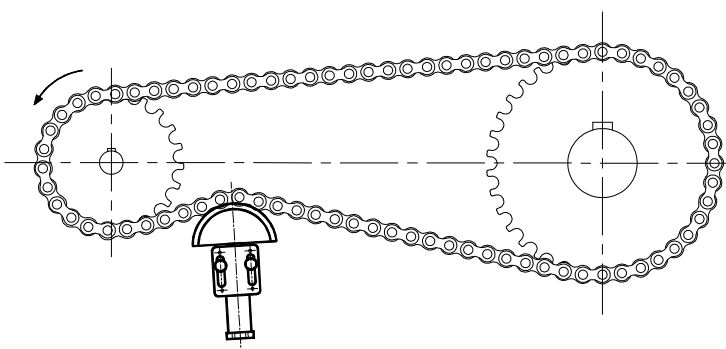
滑块工作温度 ≤70°C。

MATERIALS Sliding block made of polyethylene, high molecular density.

USE Semi-circular profile suitable for reduced interaxis or for installation close to the pinion.

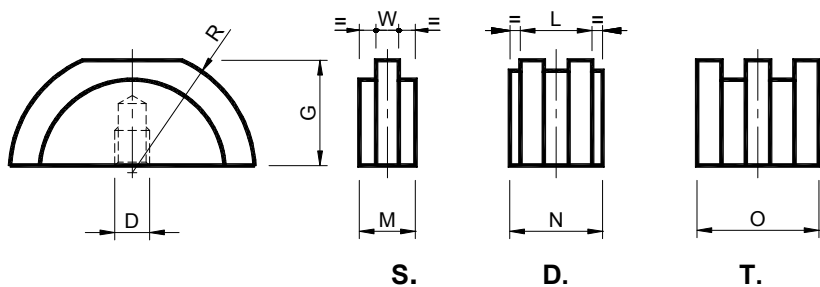
| 型号 Type | S 编号 N° | D 编号 N° | T 编号 N° | 链条 Chain | R | W | M | N | O | L | D | 重量 Weight in Kg | | |
|------------|------------|------------|------------|--------------|----|-----|----|----|----|----|-----|--------------------|------|------|
| | | | | | | | | | | | | S. | D. | T. |
| V10-0 | TB001060 | TB001070 | | 8mm | 35 | 2.5 | 18 | 18 | / | 8 | M10 | 0.03 | 0.03 | 0.05 |
| V10-1 | TB001061 | TB001071 | TB001080 | 3/8" x 7/32" | 35 | 5 | 18 | 18 | 25 | 15 | M10 | 0.03 | 0.03 | 0.05 |
| V20-1 | TB001061 | TB001071 | TB001080 | 3/8" x 7/32" | 35 | 5 | 18 | 18 | 25 | 15 | M10 | 0.03 | 0.03 | 0.05 |
| V10-2 | TB001062 | TB001072 | TB001081 | 1/2" x 5/16" | 35 | 7 | 18 | 21 | 34 | 20 | M10 | 0.03 | 0.04 | 0.06 |
| V20-2 | TB001062 | TB001072 | TB001081 | 1/2" x 5/16" | 35 | 7 | 18 | 21 | 34 | 20 | M10 | 0.03 | 0.04 | 0.06 |
| V30-2 | TB001062 | TB001072 | TB001081 | 1/2" x 5/16" | 35 | 7 | 18 | 21 | 34 | 20 | M10 | 0.03 | 0.04 | 0.06 |
| V30-3 | TB001063 | TB001073 | TB001082 | 5/8" x 3/8" | 45 | 9 | 18 | 25 | 42 | 25 | M10 | 0.05 | 0.07 | 0.12 |
| V40-3 | TB001063 | TB001073 | TB001082 | 5/8" x 3/8" | 45 | 9 | 18 | 25 | 42 | 25 | M10 | 0.05 | 0.07 | 0.12 |
| V30-4 | TB001064 | TB001074 | TB001083 | 3/4" x 7/16" | 45 | 11 | 18 | 30 | 49 | 30 | M10 | 0.05 | 0.08 | 0.14 |
| V40-4 | TB001064 | TB001074 | TB001083 | 3/4" x 7/16" | 45 | 11 | 18 | 30 | 49 | 30 | M10 | 0.05 | 0.08 | 0.14 |
| V40-5 | TB001065 | TB001075 | TB001084 | 1" x 17.02mm | 55 | 16 | 20 | 47 | 79 | 47 | M10 | 0.08 | 0.19 | 0.31 |
| V50-5 | TB001065 | TB001075 | TB001084 | 1" x 17.02mm | 55 | 16 | 20 | 47 | 79 | 47 | M10 | 0.08 | 0.19 | 0.31 |
| V50-6 | TB001066 | | | 1"1/4 x 3/4" | 55 | 18 | 22 | / | / | / | M10 | 0.09 | 0.22 | 0.36 |
| V50-7 | TB001067 | | | 1"1/2 x 1" | 55 | 24 | 24 | / | / | / | M10 | 0.12 | 0.28 | 0.42 |

应用实例 / Application example



张紧装置配套元件 / KIT for chain tighteners

聚乙烯滑块 – 型号: L / Polyethylene sliding block – Type: L



轮廓的形状如此设计使得与工作表面接触的始终有两 / 三个链条滚轮 (图 1)。这种解决办法以圆满经济的方式代替具大半径滑动轮廓的大型滑块。

The profile shape has been created so that there are always two/three chain rollers in contact with the work surface (fig.1). This solution is an effective and inexpensive alternative to using large sliders with extensive sliding profile ranges.

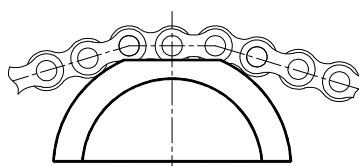


图 1

材料 高分子密度聚乙烯滑块。

应用 具半圆形轮廓顶部磨平的滑块

适用于大轴距。

工作速度 ≤20 米 / 分。

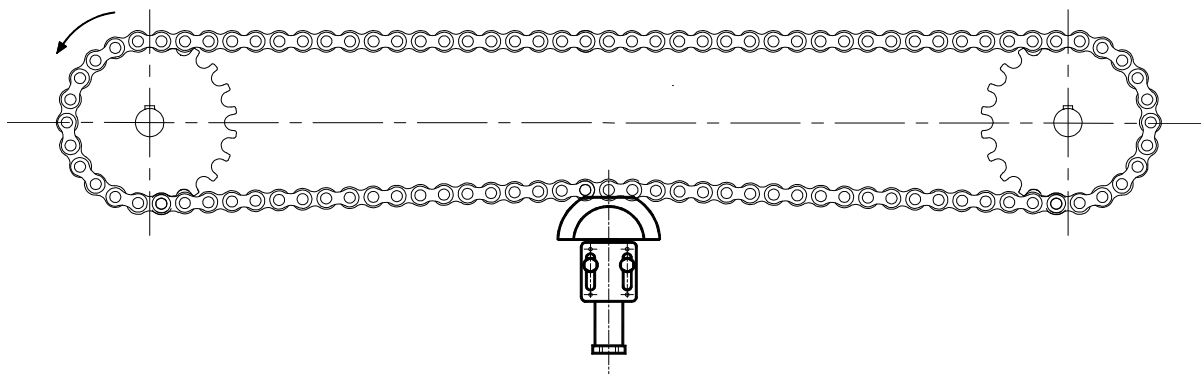
工作温度 ≤70°C。

MATERIALS Sliding block made of polyethylene, high molecular density.

USE Semi-circular lowered profile, suitable for large interaxis. Operating speed ≤20 m/min. Operating temperature ≤70°C.

| 型号 Type | S 编号 N° | D 编号 N° | T 编号 N° | 链条 Chain | G | R | W | M | N | O | L | D | 重量 Weight in Kg | | |
|------------|------------|------------|------------|--------------|----|----|-----|----|----|----|----|-----|--------------------|------|------|
| | | | | | | | | | | | | | S. | D. | T. |
| L10-0 | TB001097 | TB001107 | | 8mm | 30 | 35 | 2.5 | 18 | 18 | / | 8 | M10 | 0.03 | 0.03 | 0.05 |
| L10-1 | TB001098 | TB001108 | TB001117 | 3/8" x 7/32" | 30 | 35 | 5 | 18 | 18 | 25 | 15 | M10 | 0.03 | 0.03 | 0.05 |
| L20-1 | TB001098 | TB001108 | TB001117 | 3/8" x 7/32" | 30 | 35 | 5 | 18 | 18 | 25 | 15 | M10 | 0.03 | 0.03 | 0.05 |
| L10-2 | TB001099 | TB001109 | TB001118 | 1/2" x 5/16" | 30 | 35 | 7 | 18 | 21 | 34 | 20 | M10 | 0.03 | 0.04 | 0.06 |
| L20-2 | TB001099 | TB001109 | TB001118 | 1/2" x 5/16" | 30 | 35 | 7 | 18 | 21 | 34 | 20 | M10 | 0.03 | 0.04 | 0.06 |
| L30-2 | TB001099 | TB001109 | TB001118 | 1/2" x 5/16" | 30 | 35 | 7 | 18 | 21 | 34 | 20 | M10 | 0.03 | 0.04 | 0.26 |
| L30-3 | TB001100 | TB001110 | TB001119 | 5/8" x 3/8" | 37 | 45 | 9 | 18 | 25 | 42 | 25 | M10 | 0.04 | 0.06 | 0.11 |
| L40-3 | TB001100 | TB001110 | TB001119 | 5/8" x 3/8" | 37 | 45 | 9 | 18 | 25 | 42 | 25 | M10 | 0.04 | 0.06 | 0.11 |
| L30-4 | TB001101 | TB001111 | TB001120 | 3/4" x 7/16" | 37 | 45 | 11 | 18 | 30 | 49 | 30 | M10 | 0.04 | 0.07 | 0.13 |
| L40-4 | TB001101 | TB001111 | TB001120 | 3/4" x 7/16" | 37 | 45 | 11 | 18 | 30 | 49 | 30 | M10 | 0.04 | 0.07 | 0.13 |
| L40-5 | TB001102 | TB001112 | TB001121 | 1" x 17.02mm | 46 | 55 | 16 | 20 | 47 | 79 | 47 | M10 | 0.08 | 0.17 | 0.30 |
| L50-5 | TB001102 | TB001112 | TB001121 | 1" x 17.02mm | 46 | 55 | 16 | 20 | 47 | 79 | 47 | M10 | 0.08 | 0.17 | 0.30 |
| L50-6 | TB001103 | | | 1"1/4 x 3/4" | 46 | 55 | 18 | 22 | / | / | / | M10 | 0.08 | 0.19 | 0.34 |
| L50-7 | TB001104 | | | 1"1/2 x 1" | 46 | 55 | 24 | 24 | / | / | / | M10 | 0.11 | 0.21 | 0.35 |

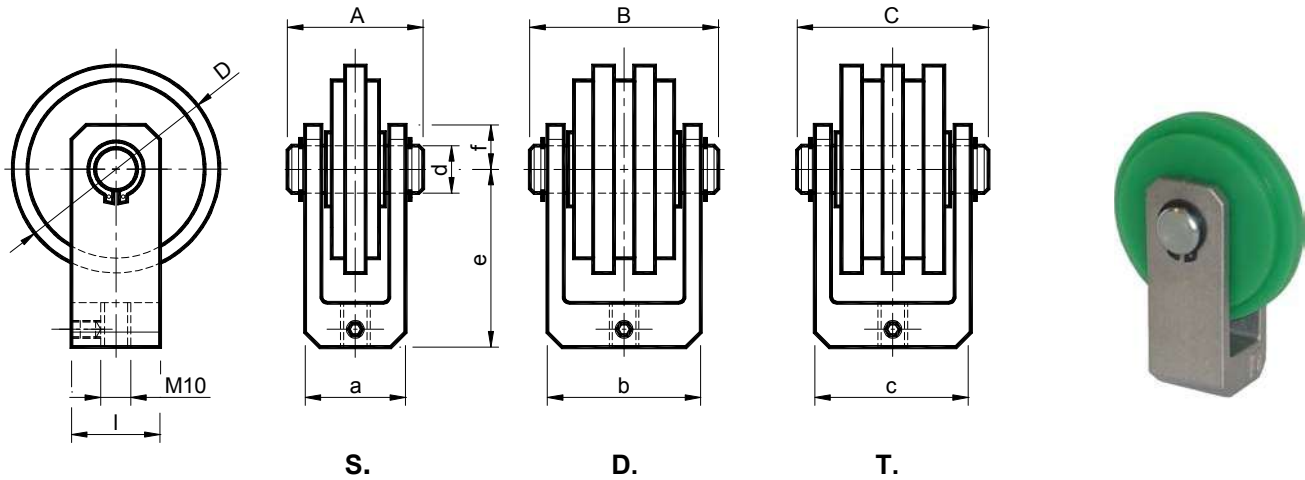
应用实例 / Application example



张紧装置配套元件 / KIT for chain tighteners

在支架上的聚乙烯滑轮 – 型号: RF

Polyethylene wheeset on the fork – Type: RF



材料 一般来讲支架为铝制，仅在更大尺寸时为钢制。滑轮为高分子密度聚乙烯。中心轴为钢制。

处理 支架为喷砂铝或涂漆钢。中心轴为镀锌钢。

应用 在中心轴上的空转滑轮。

工作速度 ≤30 米 / 分。 工作温度 ≤70°C。

MATERIALS The fork is usually made of aluminium, only for bigger sizes it is made of steel. Polyethylene wheel, high molecular density. Pin made of steel.

TREATMENTS Fork made of sandblasted aluminium or painted steel. Pin made of galvanized steel.

USE Idle wheel on the pin.

Operating speed ≤30 m/min. Operating temperature ≤70°C.

| 型号 Type | 编号 N° S. | 编号 N° D. | 编号 N° T. | 链条 Chain | a | A | b | B | c | C | d | D | e | f | l | 重量 Weight in Kg | | |
|------------|-------------|-------------|-------------|--------------|----|----|----|----|----|----|----|-----|------|----|----|--------------------|------|------|
| | | | | | | | | | | | | | | | | S. | D. | T. |
| RF 10-0 | ΔTB001315 | ΔTB001325 | | 8mm | 30 | 40 | 30 | 40 | / | / | 16 | 70 | 60 | 35 | 30 | 0.18 | 0.19 | |
| RF 10-1 | ΔTB001316 | ΔTB001326 | ΔTB001335 | 3/8" x 7/32" | 30 | 40 | 30 | 40 | 50 | 60 | 16 | 70 | 60 | 35 | 30 | 0.18 | 0.19 | 0.30 |
| RF 20-1 | ΔTB001316 | ΔTB001326 | ΔTB001335 | 3/8" x 7/32" | 30 | 40 | 30 | 40 | 50 | 60 | 16 | 70 | 60 | 35 | 30 | 0.18 | 0.19 | 0.30 |
| RF 10-2 | ΔTB001317 | ΔTB001327 | ΔTB001336 | 1/2" x 5/16" | 30 | 40 | 50 | 60 | 50 | 60 | 16 | 70 | 60 | 35 | 30 | 0.19 | 0.29 | 0.30 |
| RF 20-2 | ΔTB001317 | ΔTB001327 | ΔTB001336 | 1/2" x 5/16" | 30 | 40 | 50 | 60 | 50 | 60 | 16 | 70 | 60 | 35 | 30 | 0.19 | 0.29 | 0.30 |
| RF 30-2 | ΔTB001317 | ΔTB001327 | ΔTB001336 | 1/2" x 5/16" | 30 | 40 | 50 | 60 | 50 | 60 | 16 | 70 | 60 | 35 | 30 | 0.19 | 0.29 | 0.30 |
| RF 30-3 | ΔTB001318 | ΔTB001328 | ○TB001337 | 5/8" x 3/8" | 35 | 45 | 55 | 65 | 67 | 78 | 16 | 90 | 70 | 45 | 30 | 0.26 | 0.41 | 1.10 |
| RF 40-3 | ΔTB001318 | ΔTB001328 | ○TB001337 | 5/8" x 3/8" | 35 | 45 | 55 | 65 | 67 | 78 | 16 | 90 | 70 | 45 | 30 | 0.26 | 0.41 | 1.10 |
| RF 30-4 | ΔTB001319 | ΔTB001329 | ○TB001338 | 3/4" x 7/16" | 35 | 45 | 55 | 65 | 67 | 78 | 16 | 90 | 70 | 45 | 30 | 0.27 | 0.42 | 1.10 |
| RF 40-4 | ΔTB001319 | ΔTB001329 | ○TB001338 | 3/4" x 7/16" | 35 | 45 | 55 | 65 | 67 | 78 | 16 | 90 | 70 | 45 | 30 | 0.27 | 0.42 | 1.10 |
| RF 40-5 | ΔTB001320 | ○TB001330 | | 1" x 17.02mm | 35 | 45 | 67 | 78 | / | / | 20 | 110 | 77.5 | 55 | 40 | 0.42 | 1.17 | |
| RF 50-5 | ΔTB001320 | ○TB001330 | | 1" x 17.02mm | 35 | 45 | 67 | 78 | / | / | 20 | 110 | 77.5 | 55 | 40 | 0.42 | 1.17 | |
| RF 50-6 | ΔTB001321 | | | 1"1/4 x 3/4" | 35 | 45 | / | / | / | / | 20 | 110 | 77.5 | 55 | 40 | 0.43 | | |
| RF 50-7 | ○TB001322 | | | 1"1/2 x 1" | 67 | 78 | / | / | / | / | 20 | 110 | 77.5 | 55 | 40 | 0.50 | | |

Δ: 支架为铸铝制 / Fork made of light metal die cast

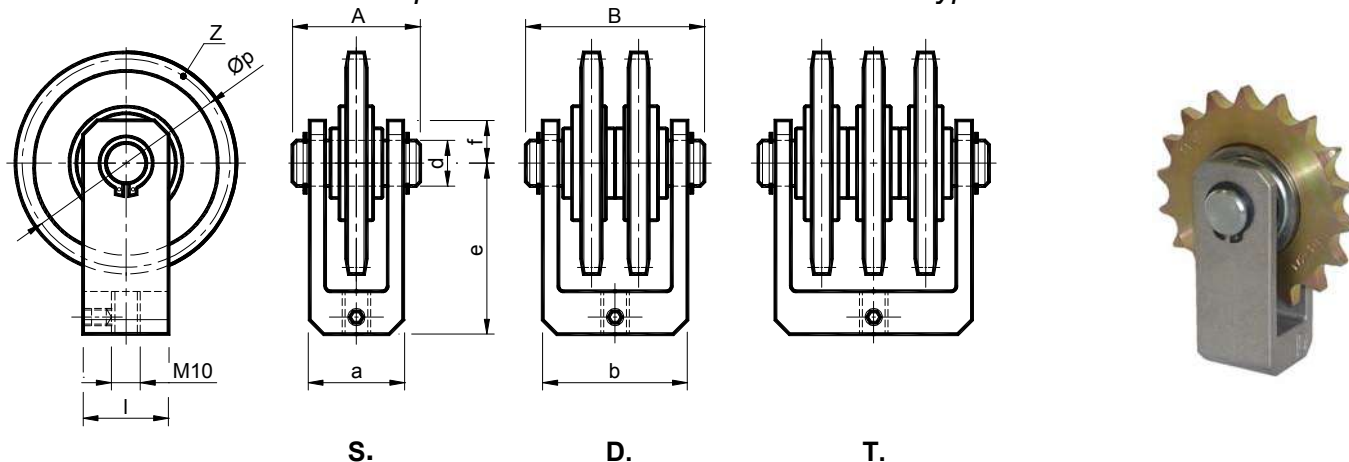
○: 支架为焊接钢制 / Fork made of welded steel




张紧装置配套元件 / KIT for chain tighteners

在支架上的钢制链轮 – 型号: RR

Sprocket made of steel on the fork – Type: RR



 **材料** 一般来讲支架为铝制，仅在更大尺寸时为钢制。轴承、齿冠和中心轴均为钢制。


处理 支架为喷砂铝或涂漆钢。齿冠和中心轴为镀锌钢。

应用 在中心轴上的空转链轮。链轮由钢制齿冠组成，安装在具扩大底部的国产轴承上。

经客户要求可提供 INA 轴承。用于三链、ASA、公制或不统一的配件仅在客户要求时提供。

工作速度 ≤60 米 / 分。

工作温度 ≤100°C。

 **MATERIALS** The fork is usually made of aluminium, only for bigger sizes it is made of steel. The bearing, the toothed crown and the pin are made of steel.

TREATMENTS Fork made of sandblasted aluminium or painted steel. Crown and pin made of galvanized steel.

USE Idle pin on the fork. The sprocket consists of a steel crown, installed on national enlarged bearings. On demand INA bearings can be supplied.

The KIT for triple chains, ASA, metric or not standard are made only on request.

Operating speed ≤60 m/min.

Operating temperature ≤100°C.

| 型号 Type | 编号 N° S. | 编号 N° D. | 链条 Chain | a | A | b | B | D | e | f | l | Øp | Z | 重量 Weight in Kg | |
|------------|-------------|-------------|--------------|----|----|----|----|----|------|----|----|-------|----|-----------------------|------|
| | | | | | | | | | | | | | | S. | D. |
| RR 10-1 | ΔTB001353 | ΔTB001363 | 3/8" x 7/32" | 30 | 40 | 50 | 60 | 16 | 60 | 32 | 30 | 63.90 | 21 | 0.29 | 0.50 |
| RR 20-1 | ΔTB001353 | ΔTB001363 | 3/8" x 7/32" | 30 | 40 | 50 | 60 | 16 | 60 | 32 | 30 | 63.90 | 21 | 0.29 | 0.50 |
| RR 10-2 | ΔTB001354 | ΔTB001364 | 1/2" x 5/16" | 30 | 40 | 50 | 60 | 16 | 60 | 37 | 30 | 73.14 | 18 | 0.37 | 0.65 |
| RR 20-2 | ΔTB001354 | ΔTB001364 | 1/2" x 5/16" | 30 | 40 | 50 | 60 | 16 | 60 | 37 | 30 | 73.14 | 18 | 0.37 | 0.65 |
| RR 30-2 | ΔTB001354 | ΔTB001364 | 1/2" x 5/16" | 30 | 40 | 50 | 60 | 16 | 60 | 37 | 30 | 73.14 | 18 | 0.37 | 0.65 |
| RR 30-3 | ΔTB001355 | ΔTB001365 | 5/8" x 3/8" | 35 | 45 | 55 | 65 | 16 | 70 | 43 | 30 | 86.39 | 17 | 0.54 | 0.98 |
| RR 40-3 | ΔTB001355 | ΔTB001365 | 5/8" x 3/8" | 35 | 45 | 55 | 65 | 16 | 70 | 43 | 30 | 86.39 | 17 | 0.54 | 0.98 |
| RR 30-4 | ΔTB001356 | ΔTB001366 | 3/4" x 7/16" | 35 | 45 | 55 | 65 | 16 | 70 | 46 | 30 | 91.63 | 15 | 0.65 | 1.20 |
| RR 40-4 | ΔTB001356 | ΔTB001366 | 3/4" x 7/16" | 35 | 45 | 55 | 65 | 16 | 70 | 46 | 30 | 91.63 | 15 | 0.65 | 1.20 |
| RR 40-5 | ΔTB001357 | ○TB001367 | 1" x 17.02mm | 35 | 45 | 67 | 78 | 20 | 77.5 | 55 | 40 | 98.14 | 12 | 1.00 | 2.33 |
| RR 50-5 | ΔTB001357 | ○TB001367 | 1" x 17.02mm | 35 | 45 | 67 | 78 | 20 | 77.5 | 55 | 40 | 98.14 | 12 | 1.00 | 2.33 |

Δ: 支架为铸铝制 / Fork made of light metal die cast

○: 支架为焊接钢制 / Fork made of welded steel

皮带张紧装置配套元件 / KIT for belt-tighteners

在支架上的钢制滚轮 – 型号: **RAU** / 在支架上的聚酰胺滚轮 – 型号: **RAP**
Rollerset in steel on fork – Type: **RAU** / Rollerset in polyamide on fork – Type: **RAP**



RAU



RAP

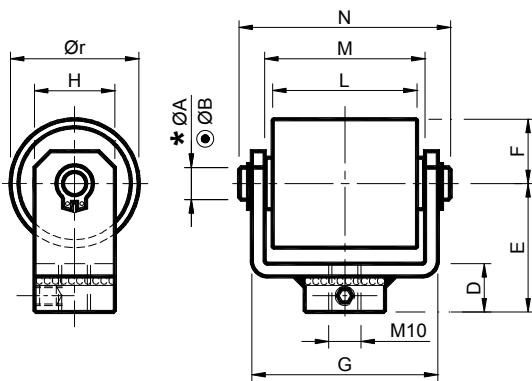
材料 RAU: 支架、轴承、中心轴、垫圈和滑轮均为钢制。
RAP: 支架、轴承、中心轴、垫圈为钢制，滑轮为聚酰胺 PA6+MoS。

处理 RAU: 支架为烤炉涂漆，金属部分为镀锌钢。
RAP: 支架为烤炉涂漆，金属部分为镀锌钢，滚轮车削 1.6。

应用 配 ZZ 润滑轴承的滚轮。

MATERIALS RAU: Fork, bearings, pin, spacers, roller made of steel.
RAP: Fork, bearings, pin, spacers made of steel, roller made of polyamide PA6+MoS.
TREATMENTS RAU: Fork oven painted, metallic components made of galvanized steel.
RAP: Fork oven painted, metallic components made of galvanized steel, the roller is turned 1.6.
USE Roller with ZZ greased bearings.

* $\varnothing A$: 用于钢制滚轮 / For roller made of steel
 $\varnothing B$: 用于聚酰胺滚轮 / For roller made of polyamide



| 钢制滚轮 Roller set in steel | | | | | | | | | | | | | 聚酰胺滚轮 Roller set in polyamide | | | |
|-----------------------------|----------|-------------------|-----------------|----|----|----|-----|----|-----|-----|-------|-----------------|----------------------------------|----------|--------------------|------|
| 型号 Type | 编号 N° | * $\varnothing A$ | $\varnothing B$ | D | E | F | G | H | L | M | N | $\varnothing r$ | 型号 Type | 编号 N° | 重量 Weight in Kg | |
| | | | | | | | | | | | | | | | RAU | RAP |
| RAU 1 | AR070902 | 8 | 8 | 15 | 35 | 15 | 51 | 20 | 35 | 43 | 60 | 30 | RAP 1 | AR070886 | 0.24 | 0.16 |
| RAU 2/3 | AR070904 | 10 | 10 | 15 | 40 | 20 | 58 | 25 | 45 | 50 | 68 | 40 | RAP 2/3 | AR070888 | 0.46 | 0.29 |
| RAU 4-10 | TB002022 | 16 | 12 | 15 | 50 | 30 | 75 | 35 | 60 | 65 | 85 | 60 | RAP 4-10 | TB002032 | 1.16 | 0.65 |
| RAU 5-10 | TB002023 | 20 | 20 | 20 | 65 | 40 | 111 | 45 | 90 | 95 | 121.5 | 80 | RAP 5-10 | TB002033 | 2.98 | 1.70 |
| RAU 6-10 | TB002024 | 20 | 20 | 20 | 70 | 45 | 156 | 45 | 135 | 140 | 167 | 90 | RAP 6-10 | TB002034 | 5.80 | 2.49 |

| 工作区 Working field | | | | 工作区 Working field | | | |
|----------------------|-------------------------------|-----------------|---------------|----------------------|-------------------------------|-----------------|---------------|
| 型号 Type | \varnothing 滚轮 Roller | 最高转数 Max rpm | 轴承 Bearing | 型号 Type | \varnothing 滚轮 Roller | 最高转数 Max rpm | 轴承 Bearing |
| RAU 1 | 30 | 15000 | 608 | RAP 1 | 30 | 8000 | 608 |
| RAU 2/3 | 40 | 12000 | 6200 | RAP 2/3 | 40 | 8000 | 6200 |
| RAU 4-10 | 60 | 9500 | 6304 | RAP 4-10 | 60 | 6000 | 6301 |
| RAU 5-10 | 80 | 6500 | 6306 | RAP 5-10 | 80 | 5000 | 6304 |
| RAU 6-10 | 90 | 6500 | 6306 | RAP 6-10 | 90 | 4500 | 6304 |

在表中描述的转数为近似的。其应用根据使用方式、运转率及工作条件而评估。

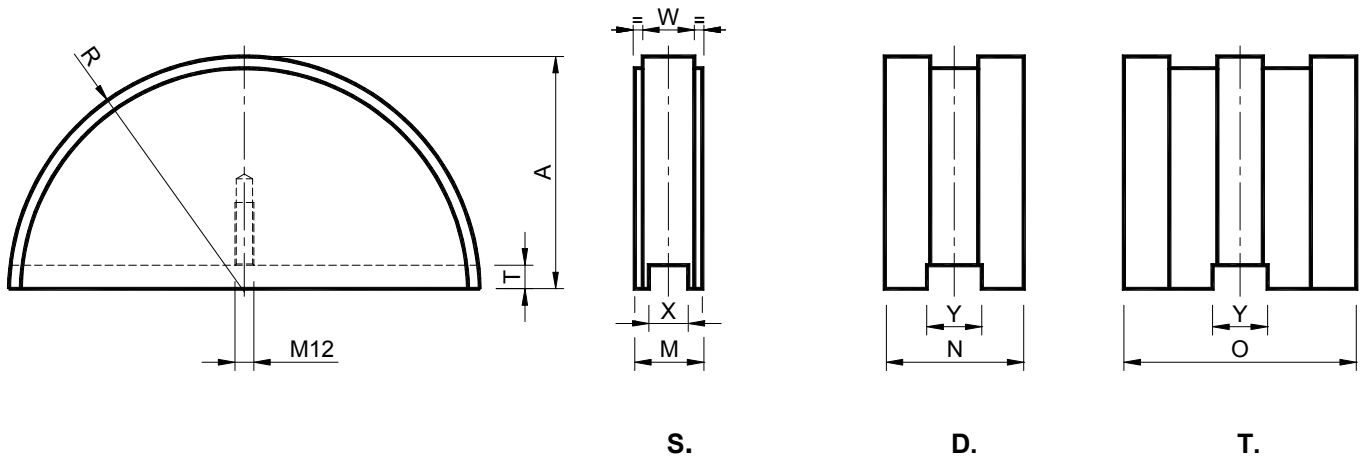
The rpm indicated in the chart is approximate. The application must be considered according to the type of use, the service factor and the working conditions.

配套元件选择列表 / KIT selection table

| 链条 - Chain (DIN 8187) | | 型号 - Type | | 尺寸 - Size | 型号 - Type | | 最高皮带宽度 [mm] Max belt width [mm] |
|--------------------------|---------------|---|--|-----------|---|---|------------------------------------|
| ISO | 节距 Pitch | 2V  第 55 页 | 2RR  第 56 页 | | 2RAU  第 57 页 | 2RAP  第 57 页 | |
| 16-B1 | 1" x 17.02mm | 2V 2•40-5 S | | 240 | 2RAU 4 | 2RAP 4 | 55 |
| 16-B1 | 1" x 17.02mm | | 2RR 2•50-5 S | 250 | | | |
| 20-B1 | 1"1/4 x 3/4" | 2V 2•40-6 S | | 240 | | | |
| 20-B1 | 1"1/4 x 3/4" | | 2RR 2•50-6 S | 250 | 2RAU 5 | 2RAP 5 | 85 |
| 24-B1 | 1"1/2 x 1" | 2V 2•50-7 S | | 250 | | | |
| 24-B1 | 1"1/2 x 1" | | 2RR 2•60-7 S | 260 | 2RAU 6 | 2RAP 6 | 130 |
| 28-B1 | 1"3/4 x 1"1/4 | 2V 2•50-8 S | | 250 | | | |
| 28-B1 | 1"3/4 x 1"1/4 | | 2RR 2•60-8 S | 260 | | | |
| 32-B1 | 2" x 1"1/4 | 2V 2•60-9 S | | 260 | | | |
| 32-B1 | 2" x 1"1/4 | | 2RR 2•70-9 S | 270 | | | |
| 16-B2 | 1" x 17.02mm | 2V 2•40-5 D | | 240 | | | |
| 16-B2 | 1" x 17.02mm | | 2RR 2•50-5 D | 250 | | | |
| 20-B2 | 1"1/4 x 3/4" | 2V 2•40-6 D | | 240 | | | |
| 20-B2 | 1"1/4 x 3/4" | | 2RR 2•50-6 D | 250 | | | |
| 24-B2 | 1"1/2 x 1" | 2V 2•50-7 D | | 250 | | | |
| 24-B2 | 1"1/2 x 1" | | 2RR 2•60-7 D | 260 | | | |
| 28-B2 | 1"3/4 x 1"1/4 | 2V 2•50-8 D | | 250 | | | |
| 28-B2 | 1"3/4 x 1"1/4 | | 2RR 2•60-8 D | 260 | | | |
| 32-B2 | 2" x 1"1/4 | 2V 2•60-9 D | | 260 | | | |
| 32-B2 | 2" x 1"1/4 | | 2RR 2•70-9 D | 270 | | | |
| 16-B3 | 1" x 17.02mm | 2V 2•40-5 T | | 240 | | | |
| 16-B3 | 1" x 17.02mm | | | 250 | | | |
| 20-B3 | 1"1/4 x 3/4" | 2V 2•40-6 T | | 240 | | | |
| 24-B3 | 1"1/2 x 1" | 2V 2•50-7 T | | 250 | | | |

张紧装置配套元件 / KIT for chain tighteners

聚乙烯滑块 – 型号: **2V** / Polyethylene sliding block – Type: **2V**



材料 高分子密度聚乙烯滑块。

应用 具高半径半圆形轮廓，适用于大轴距或链条式输送机的 180°从动返回。

工作速度 ≤20 米 / 分。

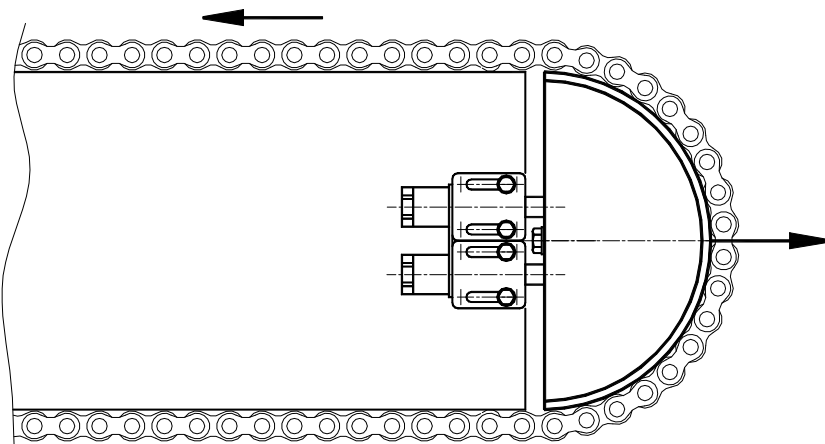
工作温度 ≤70°C。

MATERIALS Sliding block made of polyethylene, high molecular density.
USE Semicircular profile wide-ranging indicated for large distances or for returns to 180° in chain conveyors.
Operating speed ≤20 m/min.
Operating temperature ≤70°C.



| 型号 Type | S 编号 N° | D 编号 N° | T 编号 N° | 链条 Chain | R | W | A | M | N | O | T | X | Y | 重量 Weight in Kg | | |
|------------|------------|------------|------------|---------------|-----|----|-----|----|----|-----|----|----|----|--------------------|------|------|
| | | | | | | | | | | | | | | S. | D. | T. |
| 2V 2•40-5 | TB001900 | TB001920 | TB001940 | 1" x 17.02mm | 100 | 16 | 98 | 25 | 47 | 79 | 15 | 20 | 35 | 0.37 | 0.70 | 1.18 |
| 2V 2•40-6 | TB001902 | TB001922 | TB001942 | 1"1/4 x 3/4" | 100 | 18 | 98 | 25 | 54 | 91 | 15 | 20 | 35 | 0.37 | 0.80 | 1.35 |
| 2V 2•50-7 | TB001904 | TB001924 | TB001944 | 1"1/2 x 1" | 100 | 24 | 98 | 30 | 72 | 120 | 15 | 25 | 35 | 0.44 | 1.06 | 1.76 |
| 2V 2•50-8 | TB001906 | TB001926 | | 1"3/4 x 1"1/4 | 150 | 29 | 148 | 35 | 88 | / | 15 | 25 | 35 | 1.05 | 2.64 | |
| 2V 2•60-9 | TB001908 | TB001928 | | 2" x 1"1/4 | 150 | 29 | 148 | 35 | 87 | / | 15 | 25 | 35 | 1.05 | 2.64 | |

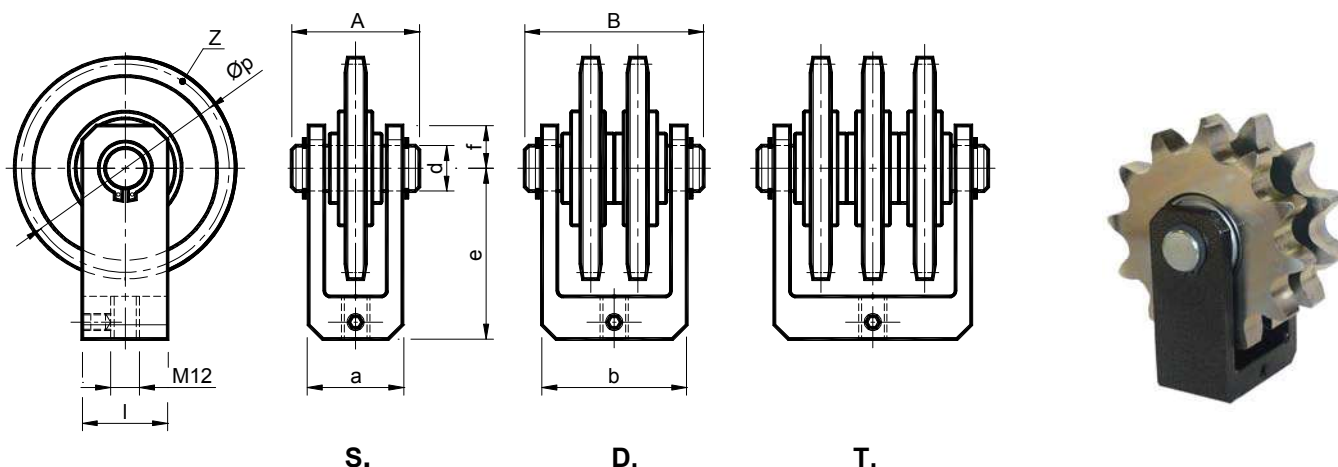
应用实例 / Application example



配件 2V 可作为链条式输送机的 180°从动返回。

The kit 2V can be used for return at 180° in a chain conveyor.

张紧装置配套元件 / KIT for chain tighteners
在支架上的链条张紧装置链轮 – 型号: 2RR
Sprocket made of steel on the fork – Type: 2RR



材料 支架为钢制或铝制。轴承、齿冠和中心轴均为钢制。

处理 支架为涂漆钢或喷砂铝。齿冠和中心轴为镀锌钢。

应用 在中心轴上的空转链轮。链轮由钢制齿冠组成，安装在具扩大底部的国产轴承上。

经客户要求可提供 INA 轴承。用于三链、ASA、公制或不统一的配件仅在客户要求时提供。

工作速度 ≤60 米 / 分。

工作温度 ≤100°C。

材料 The fork is made of steel or aluminium. The bearing, the toothed crown and the pin are made of steel.

TREATMENTS Fork made of sandblasted aluminium or painted steel. Crown and pin made of galvanized steel.

USE Idle pin on the fork. The sprocket consists of a steel crown, installed on national enlarged bearings. On demand INA bearings can be supplied.

The KIT for triple chains, ASA, metric or not standard are made only on request.

Operating speed ≤60 m/min.

Operating temperature ≤100°C.

| 型号 Type | 编号 N° S. | 编号 N° D. | 链条 Chain | a | A | b | B | d | e | f | l | Øp | Z | 重量 Weight in Kg | |
|------------|-------------|-------------|---------------|----|----|-----|-----|----|------|------|----|--------|----|--------------------|-------|
| | | | | | | | | | | | | | | S. | D. |
| 2RR 2•50-5 | ΔTB001960 | ○TB001980 | 1" x 17.02mm | 35 | 45 | 67 | 78 | 20 | 77.5 | 17.5 | 40 | 98.14 | 12 | 1.00 | 2.33 |
| 2RR 2•50-6 | ○TB001963 | ○TB001983 | 1"1/4 x 3/4" | 40 | 50 | 80 | 88 | 20 | 100 | 25 | 50 | 132.65 | 13 | 2.90 | 4.56 |
| 2RR 2•60-7 | ○TB001966 | ○TB001986 | 1"1/2 x 1" | 50 | 60 | 98 | 110 | 20 | 100 | 25 | 50 | 135.21 | 11 | 3.30 | 5.40 |
| 2RR 2•60-8 | ○TB001969 | ○TB001989 | 1"3/4 x 1"1/4 | 55 | 65 | 114 | 125 | 30 | 115 | 25 | 50 | 157.77 | 11 | 5.00 | 10.00 |
| 2RR 2•70-9 | ○TB001972 | ○TB001992 | 2" x 1"1/4 | 55 | 65 | 114 | 125 | 30 | 125 | 25 | 50 | 180.34 | 11 | 7.00 | 14.00 |

Δ: 支架为铸铝制 / Fork made of light metal die cast

○: 支架为焊接钢制 / Fork made of welded steel

皮带张紧装置配套元件 / KIT for belt-tighteners

在支架上的钢制滚轮 – 型号: **2RAU** / 在支架上的聚酰胺滚轮 – 型号: **2RAP**
Roller set in steel – Type: **2RAU** / Roller set in polyamide – Type: **2RAP**



2RAU



2RAP

材料 2RAU: 支架、轴承、中心轴、垫圈和滑轮均为钢制。

2RAP: 支架、轴承、中心轴、垫圈为钢制，滚轮为黑色聚酰胺 PA6+MoS。

处理 2RAU: 支架为烤炉涂漆，金属部分为镀锌钢。

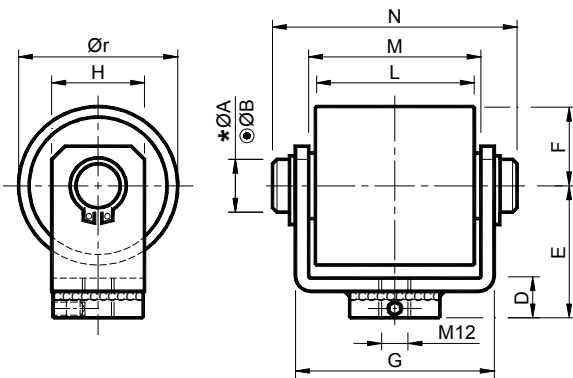
2RAP: 支架为烤炉涂漆，金属部分为镀锌钢，滚轮车削 1.6。

应用 配 ZZ 润滑轴承的滚轮。

MATERIALS 2RAU: Fork, bearings, pin, spacers, roller made of steel.
2RAP: Fork, bearings, pin, spacers made of steel, roller made of black polyamide PA6+MoS.

TREATMENTS 2RAU: Fork oven painted, metallic components made of galvanized steel
2RAP: Fork oven painted, metallic components made of galvanized steel, The roller is turned 1.6.

USE Roller with ZZ greased bearings.



*ØA : 用于钢制滚轮 / For roller made of steel

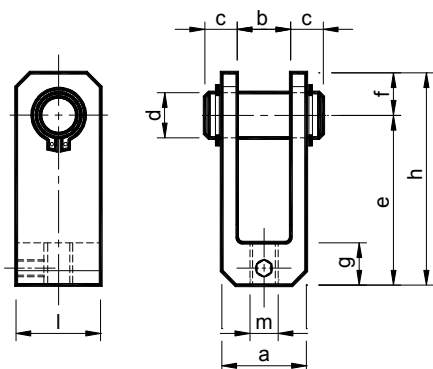
○ ØB : 用于聚酰胺滚轮 / For roller made of polyamide

| 钢制滚轮 Roller set in steel | | | | | | | | | | | | | 聚酰胺滚轮 Roller set in polyamide | | | |
|-----------------------------|----------|---------|---------|----|----|----|-----|----|-----|-----|-------|----|----------------------------------|----------|--------------------|------|
| 型号 Type | 编号 N° | * ØA | ○ ØB | D | E | F | G | H | L | M | N | Ør | 型号 Type | 编号 N° | 重量 Weight in Kg | |
| | | | | | | | | | | | | | | | 2RAU | 2RAP |
| 2RAU 4 | TB002052 | 16 | 12 | 15 | 50 | 30 | 75 | 35 | 60 | 65 | 85 | 60 | 2RAP 4 | TB002062 | 1.16 | 0.65 |
| 2RAU 5 | TB002053 | 20 | 20 | 20 | 65 | 40 | 111 | 45 | 90 | 95 | 121.5 | 80 | 2RAP 5 | TB002063 | 2.98 | 1.70 |
| 2RAU 6 | TB002054 | 20 | 20 | 20 | 70 | 45 | 156 | 45 | 135 | 140 | 167 | 90 | 2RAP 6 | TB002064 | 5.80 | 2.49 |

| 工作区 Working field | | | | 工作区 Working field | | | |
|----------------------|-------------------|-----------------|---------------|----------------------|-------------------|-----------------|---------------|
| 型号 Type | Ø 滚轮 Roller | 最高转数 Max rpm | 轴承 Bearing | 型号 Type | Ø 滚轮 Roller | 最高转数 Max rpm | 轴承 Bearing |
| 2RAU 4 | 60 | 9500 | 6304 | 2RAP 4 | 60 | 6000 | 6301 |
| 2RAU 5 | 80 | 6500 | 6306 | 2RAP 5 | 80 | 5000 | 6304 |
| 2RAU 6 | 90 | 6500 | 6306 | 2RAP 6 | 90 | 4500 | 6304 |

在表中描述的转数为近似的。其应用根据使用方式、运转率及工作条件而评估。

The rpm indicated in the chart is approximate. The application must be considered according to the type of use, the service factor and the working conditions.

TEN BLOC 附件 / Accessories TEN BLOC
型号: 支架 F – Type: Bracket F

材料 支架 F10 / F11 / F12 / F13 / F15: 铝 (Δ)

支架 F16: 钢 (○)

中心轴为钢制。

处理 支架为喷砂铝或镀锌钢。

中心轴为镀锌钢。


MATERIALS Fork F10 / F11 / F12 / F13 / F15: aluminium (Δ).

Fork F16 / F17: steel (○).

Pin made of steel.

TREATMENTS Fork made of sandblasted aluminium or painted steel.

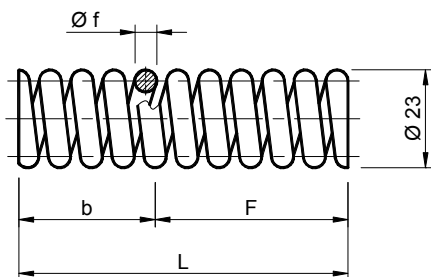
Pin made of galvanized steel.

| 型号 Type | 编号 N° | A | b | c | d | e | f | G | h | l | m | 重量 Weight in Kg |
|------------|-----------|----|----|------|----|------|------|------|----|----|-----|--------------------|
| F10 | ΔTB001134 | 30 | 19 | 10.5 | 16 | 60 | 15 | 15 | 75 | 30 | M10 | 0.14 |
| F11 | ΔTB001135 | 35 | 19 | 13 | 16 | 70 | 15 | 15 | 85 | 30 | M10 | 0.18 |
| F12 | ΔTB001136 | 50 | 37 | 11.5 | 16 | 60 | 15 | 15 | 75 | 30 | M10 | 0.19 |
| F13 | ΔTB001137 | 55 | 37 | 14 | 16 | 70 | 15 | 15 | 85 | 30 | M10 | 0.24 |
| F14 | ○TB001138 | 70 | 52 | 14 | 16 | 70 | 15 | 15 | 85 | 35 | M10 | 0.60 |
| F15 | ΔTB001139 | 35 | 19 | 13 | 20 | 77.5 | 17.5 | 17.5 | 95 | 40 | M10 | 0.28 |
| F16 | ○TB001140 | 67 | 51 | 13 | 20 | 77.5 | 17.5 | 17.5 | 95 | 40 | M10 | 0.84 |

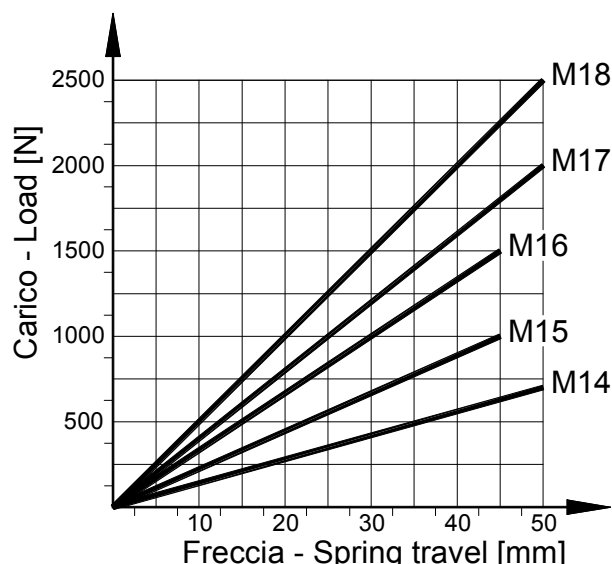
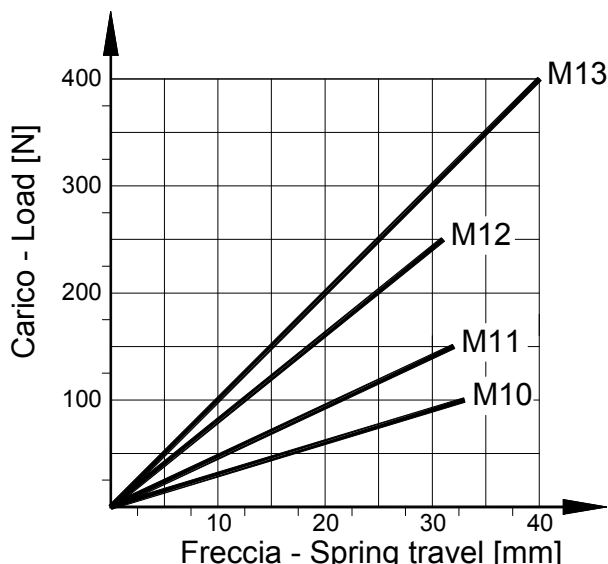
型号: 弹簧 M / Type: Spring M
材料 弹簧用钢。

处理 弹簧为粗加工，经过涂油处理。

MATERIALS Steel for springs.

TREATMENTS The springs are supplied at the raw state with oiling treatment.


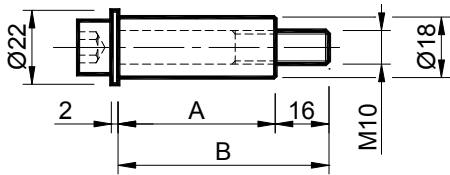
| 型号 Type | 编号 N° | L | b | F | øf | Newton | 重量 Weight in Kg |
|------------|----------|-----|-----|----|-----|----------|--------------------|
| M10 | TB001158 | 50 | 17 | 33 | 2.0 | 0 ÷ 100 | 0.013 |
| M11 | TB001159 | 50 | 18 | 32 | 2.3 | 0 ÷ 170 | 0.016 |
| M12 | TB001160 | 50 | 19 | 31 | 2.5 | 0 ÷ 250 | 0.019 |
| M13 | TB001161 | 75 | 35 | 40 | 3.0 | 0 ÷ 400 | 0.041 |
| M14 | TB001162 | 105 | 55 | 50 | 3.6 | 0 ÷ 700 | 0.075 |
| M15 | TB001163 | 130 | 85 | 45 | 4.0 | 0 ÷ 1000 | 0.113 |
| M16 | TB001164 | 155 | 110 | 45 | 4.5 | 0 ÷ 1500 | 0.162 |
| M17 | TB001165 | 160 | 110 | 50 | 4.7 | 0 ÷ 2000 | 0.179 |
| M18 | TB001166 | 205 | 155 | 50 | 5.2 | 0 ÷ 2500 | 0.268 |

弹簧负载 - 行程图: / Diagram of load-travel spring:


TEN BLOC 附件 / Accessories TEN BLOC

型号: 圆柱 B / Type: Column B

B8 – B8 L :

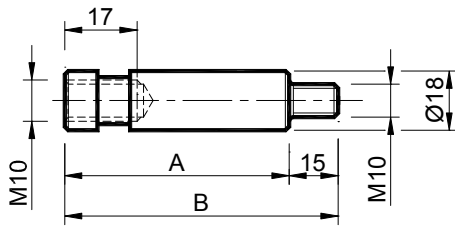


材料 钢

处理 电镀锌
MATERIALS Steel
TREATMENTS Electrolytic zinc plated

| 型号 Type | 编号 N° | A | B | 重量 Weight in Kg |
|------------|----------|-----|-----|--------------------|
| B 8 | TB001037 | 47 | 63 | 0.640 |
| B 8L | TB001036 | 62 | 78 | 0.850 |
| B 9 | TB001038 | 47 | 62 | 0.107 |
| B10 | TB001039 | 55 | 70 | 0.124 |
| B11 | TB001040 | 100 | 115 | 0.213 |
| B12 | TB001041 | 150 | 165 | 0.311 |
| B13 | TB001042 | 200 | 235 | 0.415 |

B 9 / B10/B11/B12/B13 :

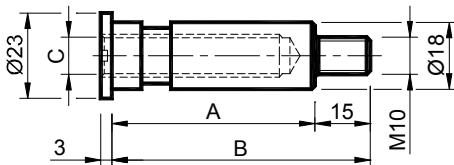


圆柱 B8 和 B8 内部配备螺钉 TCEI。

型号: 圆柱 T / Type: Column T

材料 钢

处理 电镀锌
MATERIALS Steel
TREATMENTS Electrolytic zinc plated



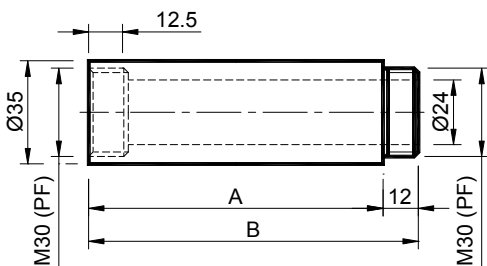
| 型号 Type | 编号 N° | A | B | C | 重量 Weight in Kg |
|------------|----------|-----|-----|-----|--------------------|
| T 9 | TB001047 | 47 | 62 | M12 | 0.065 |
| T10 | TB001048 | 55 | 70 | M12 | 0.078 |
| T11 | TB001049 | 100 | 115 | M12 | 0.124 |
| T12 | TB001050 | 150 | 165 | M12 | 0.170 |
| T13 | TB001051 | 220 | 235 | M12 | 0.250 |
| T14 | TB001052 | 50 | 65 | M 8 | 0.093 |
| T15 | TB001053 | 62 | 77 | M 8 | 0.113 |

型号: 圆筒 D / Type: Cilinder D

D10 - D11 - D12 - D13 - D30:

材料 钢

处理 电镀锌
MATERIALS Steel
TREATMENTS Electrolytic zinc plated

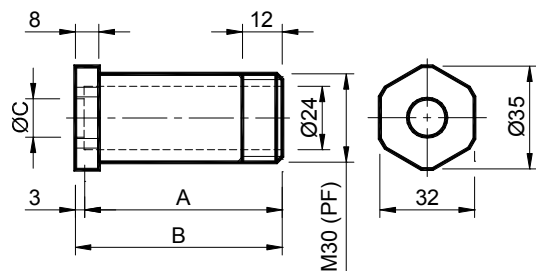


| 型号 Type | 编号 N° | A | B | 重量 Weight in Kg |
|------------|----------|-----|-----|--------------------|
| D10 | TB001015 | 25 | 37 | 0.095 |
| D11 | TB001016 | 50 | 62 | 0.192 |
| D12 | TB001017 | 75 | 87 | 0.289 |
| D13 | TB001018 | 100 | 112 | 0.388 |
| D30 | TB001030 | 35 | 47 | 0.133 |

TEN BLOC 附件 / Accessories TEN BLOC

型号: 圆筒 D / Type: *Cilinder D*

D20 – D21



材料 钢

处理 电镀锌

MATERIALS Steel

TREATMENTS Electrolytic zinc plated

| 型号 Type | 编号 N° | A | B | C | 重量 Weight in Kg |
|------------|----------|----|----|------|--------------------|
| D20 | TB001023 | 34 | 37 | / | 0.092 |
| D21 | TB001014 | 67 | 70 | 12.5 | 0.146 |

型号: 堵盖 Z10 / Type: *Stopper Z10*

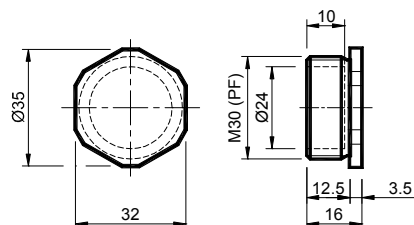
编号 N° TB001008

材料 钢

处理 电镀锌

MATERIALS Steel

TREATMENTS Electrolytic zinc plated



型号: 堵盖 Z11 / Type: *Stopper Z11*

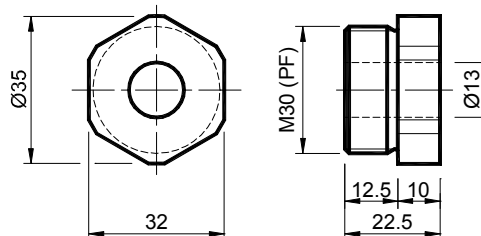
编号 N° TB001009

材料 钢

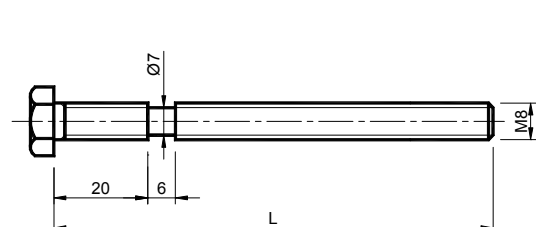
处理 电镀锌

MATERIALS Steel

TREATMENTS Electrolytic zinc plated



型号: 螺钉 UD / Type: *Screw UD*



材料 钢 处理 电镀锌

MATERIALS Steel TREATMENTS Electrolytic zinc plated

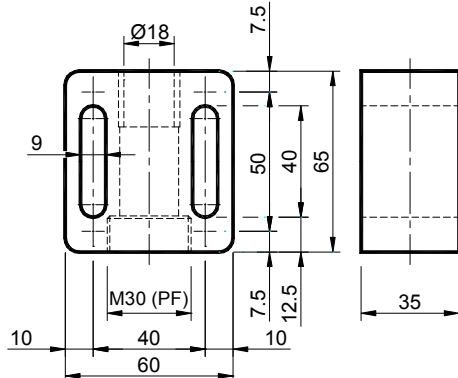
| 型号 Type | 编号 N° | L | 重量 Weight in Kg |
|------------|----------|-----|--------------------|
| UD 10 | TB001246 | 60 | 0.025 |
| UD 11 | TB001247 | 90 | 0.035 |
| UD 12 | TB001248 | 120 | 0.043 |

型号: 主体 TN / Type: *Body TN*

编号 N° TB001001

材料 铝 / MATERIALS Aluminium

处理 喷砂 / TREATMENTS Sandblasted



压铸铝并已配备轴承

Die casting in aluminium with bushing inside

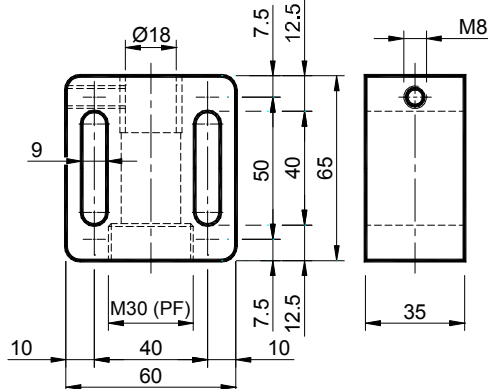
重量 / Weight: 0.20 Kg

型号: 主体 TB / Type: *Body TB*

编号 N° TB001002

材料 铝 / MATERIALS Aluminium

处理 喷砂 / TREATMENTS Sandblasted



压铸铝并已配备轴承

Die casting in aluminium with bushing inside

重量 / Weight: 0.20 Kg

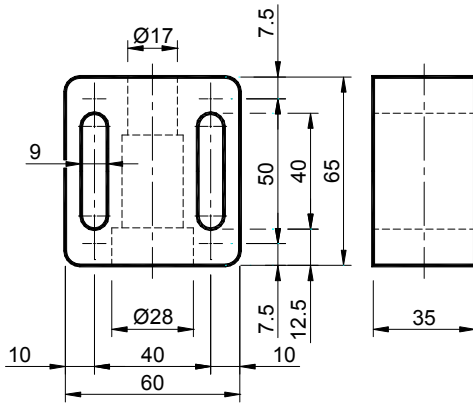
TEN BLOC 附件 / Accessories TEN BLOC

型号: 主体 TF / Type: **Body TF**

编号 N° **TB001000**

材料 铝 / **MATERIALS Aluminium**

处理 喷砂 / **TREATMENTS Sandblasted**



压铸铝 无轴承

Die casting in aluminium without bushing inside

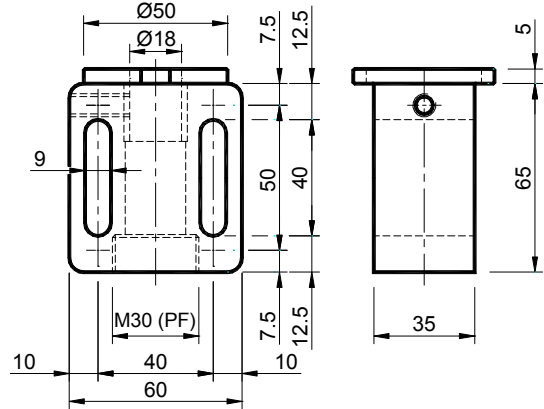
重量 / Weight: 0.20 Kg

型号: 主体 TBA / Type: **Body TBA**

编号 N° **TB001002**

材料 铝 / **MATERIALS Aluminium**

处理 喷砂 / **TREATMENTS Sandblasted**



压铸铝 外部套环为黄铜制

Die casting in aluminium with external collar made of brass

重量 / Weight: 0.20 Kg

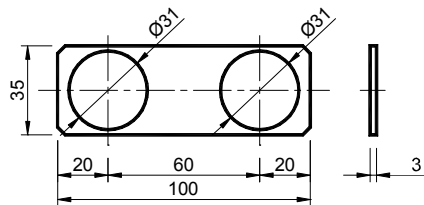
型号: 连接部件 / Type: **UNION**

编号 N° **TB001260**

材料 钢 处理 电镀锌

MATERIALS Steel

TREATMENTS Electrolytic zinc plated

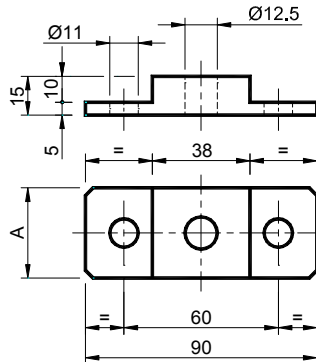


重量 / Weight: 0.38 Kg

型号: 阶形连接部件 / Type: **STAIR**

材料 钢 处理 电镀锌

MATERIALS Steel TREATMENTS Electrolytic zinc plated



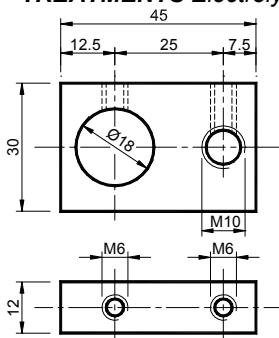
| 型号 Type | 编号 N° | A | 重量 Weight in Kg |
|------------|----------|----|-----------------------|
| SCALA | TB001270 | 35 | 0.20 |
| SCALA 25 | TB001271 | 25 | 0.14 |

型号: 小金属板 / Type: **PLATE**

编号 N° **TB001231**

材料 钢 处理 电镀锌

MATERIALS Steel TREATMENTS Electrolytic zinc plated



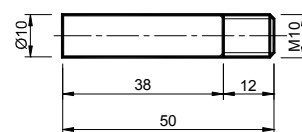
重量 / Weight: 0.10 Kg

型号: 桩销 / Type: **STAKE**

编号 N° **TB001236**

材料 钢 处理 电镀锌

MATERIALS Steel TREATMENTS Electrolytic zinc plated



重量 / Weight: 0.03 Kg

TEN BLOC 应用实例 / Examples of application TEN BLOC

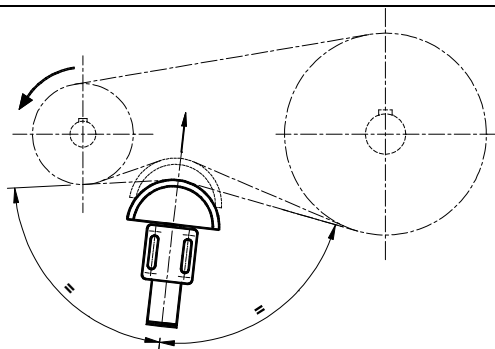


图 1
链条张紧装置 / Chain Tensioner

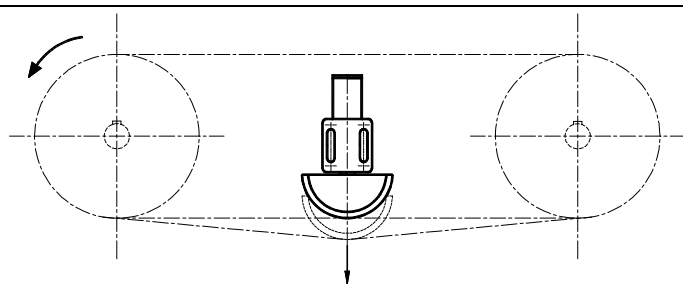


图 2
内部链条张紧装置 / Internal Chain Tensioner

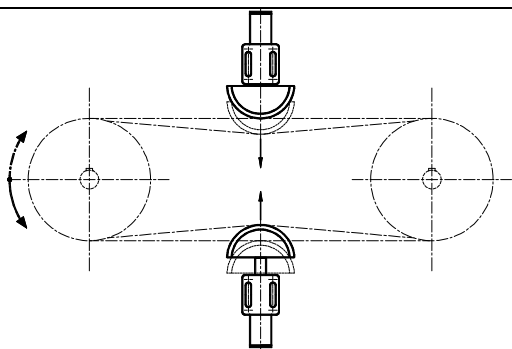


图 3
用于相反动作的链条张紧装置
Double Chain Tensioner for reversible movements

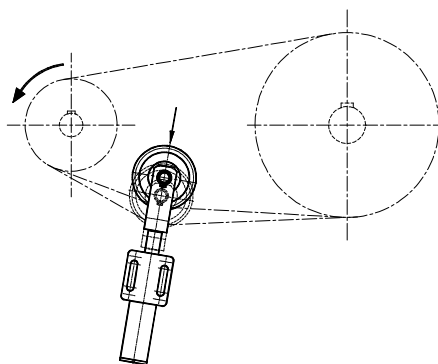


图 4
拖链条张紧装置 / Pull Chain Tensioner

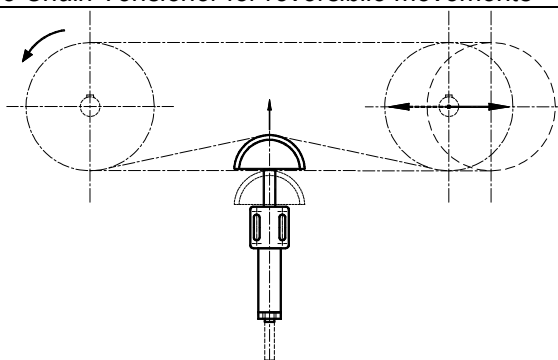


图 5
用于高度补偿和多轴距的双导向链条张紧装置
Double chain tensioner guide for high recoveries and variable distance between centres

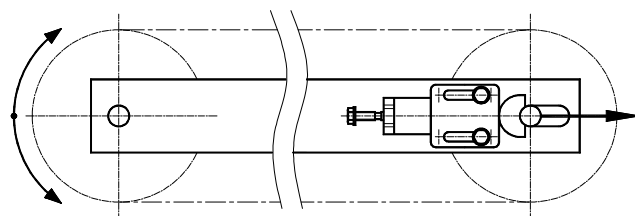


图 6
输送机用单向张紧装置
One-direction tensioner for conveyors

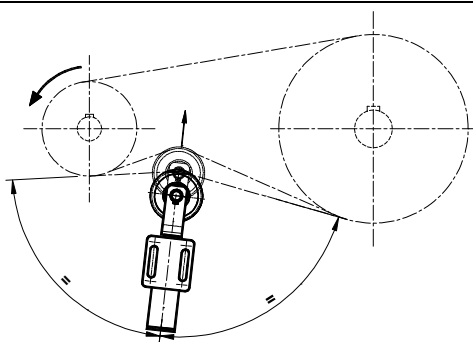


图 7
用于高速度的链条张紧装置
Chain tensioner for high speed

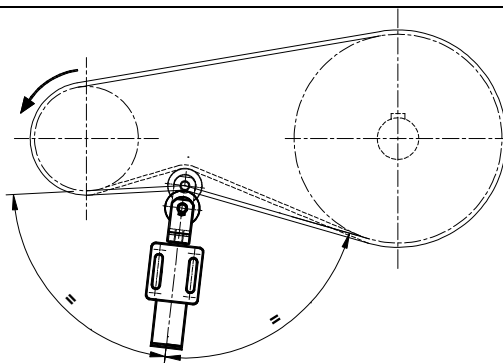
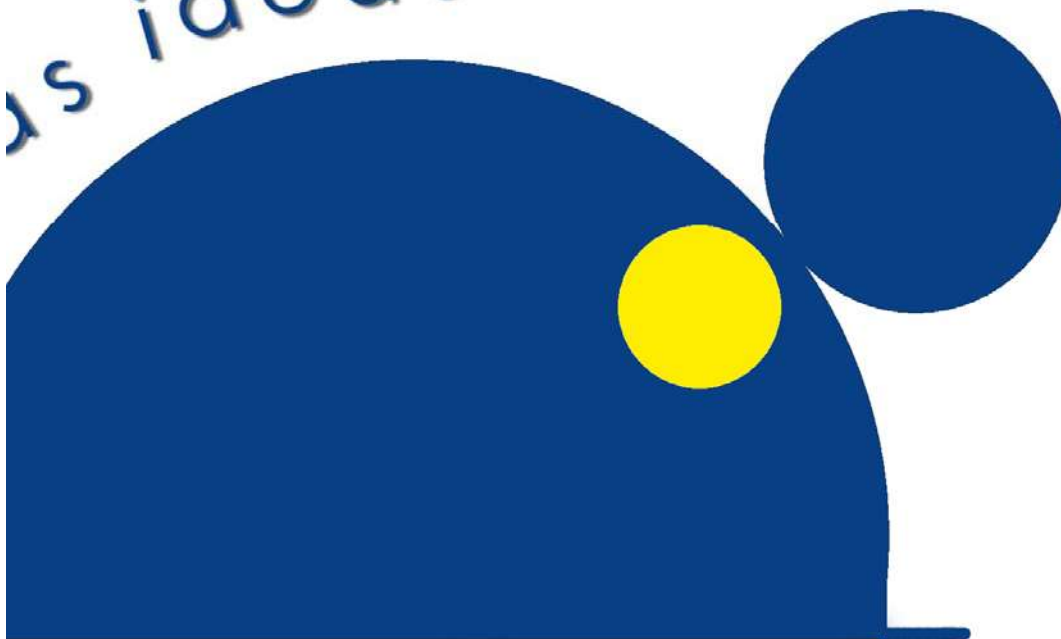


图 8
皮带张紧装置 / Belt Tensioner

TECNIDEA CIDUE S.r.l.
 Via Apollo XI, 12 (trav. Via Cavrara)
 37057 S. Giovanni Lupatoto - Verona - Italy
 tel. 0039 (0)45 8750250 - fax 0039 (0)45 8750288
 www.tecnideacidue.com
 e-mail: sales@tecnideacidue.com

ideas ideas ideas ideas



Tecnidea Cidue Worldwide

Austria - Belgium - Bulgaria - Czech republic - Denmark
 Finland - France - Germany - Greece - Hungary
 Ireland - Italy - Latvia - Lithuania - Malta - Netherlands
 Norway - Poland - Portugal - Romania - Slovakia
 Slovenia - Spain - Sweden - Switzerland - Ukraine
 United Kingdom - Argentina - Australia - Brasil
 Canada - China - Chile - India - Indonesia - Iran - Israel
 Japan - Jordan - South Korea - Mexico - New Zealand
 Peru - Philippines - Russia - Singapore - Taiwan
 Thailand - Tunisia - Turkey - U.S.A.

