

TECNIDEA CIDUE
泰尼达 S.r.l.


















产品介绍 / PRODUCT RANGE

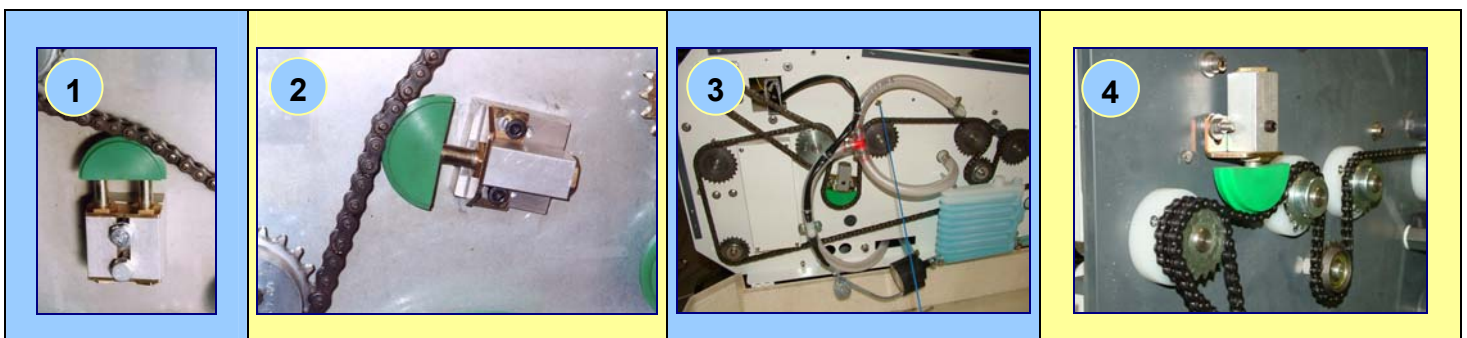
ASSO 是一项灵活多变使用方便的机械组件，其主要应用领域为自动皮带或链条张紧系统。本产品目录极为详细，以具体方式展示不同组件 **AB**、**AF** 和 **AD** 以及可与它们配合使用的附件。

由于其灵活性，还可根据建造者的特殊需要应用于其它机械领域。我们的技术部门可随时为您提供各种信息。

ASSO is a mechanical versatile component and it is simple to use, its main application field is the one of the automatic tensioning of chain or belts. The catalogue is particularly complete and it shows in a detailed manner both the different components **AB**, **AF** and **AD** and the accessories, at which they can be combined. Since it is very versatile, it can be also used in other mechanical application fields according to the specific needs of manufacturer. Our technical staff is always at Your disposal for every type of information.

| | A | B | C | D | |
|----------|--|---|--|---|----------|
| 1 |  <p>AB 第 7 页</p> |  <p>ABB 第 7 页</p> |  <p>AF 第 8 页</p> |  <p>AFB 第 8 页</p> | 1 |
| 2 |  <p>AD 第 9 页</p> |  <p>ADB 第 9 页</p> |  | | 2 |
| 3 |  <p>T 第 11 页</p> |  <p>R 第 11 页</p> |  <p>S 第 11 页</p> |  <p>P 第 12 页</p> | 3 |
| 4 |  <p>C 第 12 页</p> |  <p>TL 第 13 页</p> |  <p>DP 第 13 页</p> |  <p>DA 第 13 页</p> | 4 |
| | A | B | C | D | |

应用实例 / APPLICATION RANGE



选择适当张紧装置的计算

在选择张紧装置时，应根据是链条张紧还是皮带张紧进行特定的计算。在任何情况下，应考虑到这份手册只是作为参考指南，因为每项应用应考虑到所有因素，对传送系统中想要监控的所有变量做出定义，以正确的方式进行分析。

CALCULATION FOR THE CHOISE OF THE APPROPRIATE TENSIONER

To choose the tensioner, You have to make specific calculations according You would like to tighten a chain or a belt. In any case You have to keep in mind that this manual has to be considered only as a guide of reference, because any applications has to be carefully analyzed, considering all the factors and defining all the variables that you would like to control in the transmission.

用于链条：

滚轮式链条传动系统由一个驱动齿轮“A”和一个或多个从动齿轮“B”组成。运动从驱动轮通过链条环向从动轮传导。链条的理论伸展长度“ L_t ” [mm] 由以下公式获得：

For Roller chains:

A roller chain gearings consist of a driving gear “A” and one or more driven gears “B”. The motion from the driving gear to the driven gears occurs by means of a chain link. The development of the theoretical length “ L_t ” [mm] of a chain is given by the following formula:

$$L_t = p \cdot h$$

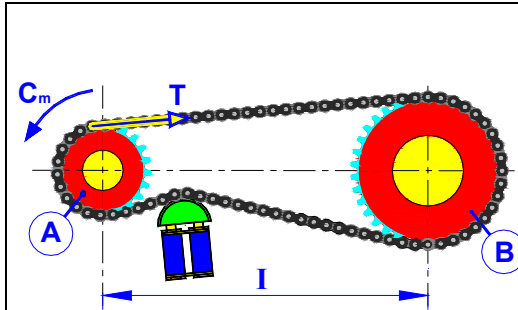


图 1

| | |
|----------|--|
| A | : 驱动齿轮 / Driving gear |
| D_{pA} | : 驱动滑轮的节径 A 以 mm 表示 / Pitch diameter of the driving gear A in mm |
| B | : 从动齿轮 / Driver gear |
| p | : 链条节距 以 mm 表示 / Inside length (pitch) in mm |
| h | : 节数 / Number of pitches |
| Z_A | : A 轮齿数 / Number of teeth of the gear A |
| Z_B | : B 轮齿数 / Number of teeth of the gear B |
| C_m | : 驱动转矩 以 Nm 表示 / Motor torque in Nm |
| M_t | : 所要传送的转矩 以 Nm 表示 / Torque to be transmitted in Nm |
| T | : 在张紧端链条受力 以 N 表示 / Stress on chain on the tensed branch in N |
| I | : 轴距 以 mm 表示 / Distances between the centres in mm |

对链条式传动系统来说，有必要两个齿数之和 $Z_A + Z_B > 50$ ，并且每个齿轮的齿数 $Z_{A,B} < 125$ 。由于一般来讲链条的节数为偶数，我们建议所使用齿轮的齿数不应具有相同的因数（如果不可能做到，应采用至少一个齿数为奇数的链轮），使用这项措施可将磨损平均分配在链轮和链条上。

到这一步可计算链条的实际长度：

For chain gearings it would be better that $Z_A + Z_B > 50$ and the number of theet on each gear will be $Z_{A,B} < 125$. Since that normally the chain has a number of even links, we recommend to use gears with teeth without reciprocal dividers (in the case this will not be possible, it will be better to use at least a pinion with an odd number of theeth) because with this solution the wear will be uniform both on the pinions and on the chain.

Now, You can measure the real length of the chain:

$$L_r = \frac{2 \cdot I}{p} + \frac{Z_A + Z_B}{2} + \frac{p \cdot (Z_B - Z_A)^2}{4 \cdot \pi^2 \cdot I} + Y.$$

在此 Y 是为了达到偶数节数的长度，以 mm 表示。

为了计算滚轮式链条的张力，有必要获得驱动转矩“ C_m ”，通过由所要传送的转矩“ M_t ”乘以一项系数“ $f=1.2 \div 2.5$ ”。此系数取决于电动机重新启动数目、电动机功率和工作条件：

Where Y is a number in mm to obtain the even number of links.

To determine the tension of the roller chain it is necessary to obtain the driving couple “ C_m ”, that results by the couple to be transmitted “ M_t ”, multiplies by a coefficient “ $f=1,2 \div 2,5$ ”, which depends on the number of re-starts, the power of the motor and the working conditions:

$$C_m = M_t \cdot f$$

在链条拉紧臂的拉力“T”由以下公式得到：

The pull “T” of the chain on the tensed branch will be determined using the following formula:

$$T = \frac{2C_m}{D_{pA}} \cdot 1000.$$

为此我们建议选择一条断裂负载高过 T 值 5 到 8 倍的链条。相反地，在从动端几乎不受力，唯一的受力来自链条自身的重量。这种传动系统的最频繁的问题是链条的拉长，由此导致：

- 缠绕角度降低，因此在驱动齿轮上的受拉齿数目减低；
- 传动比不稳定；
- 在链条滚轮和链轮齿之间的不正常接触；
- 链条和链轮的提前磨损；
- 高噪音；
- 振动，及其向机器整个结构内部传播；
- 跳齿；
- 链条从传动系统中掉落；
- 在最严重的情况下，链条断裂。

但是为了解决链条松弛问题，在传动系统安装过程中，过度地将链条拉紧是不正确的，因为在短时间内可能遇到前述状况恶化的风险。

因此，使用一台自动张紧装置是不可避免的，它可在一定时间内修正拉长并持续消减振动。自动链条张紧装置应安置在电动机链轮出口从动端，离齿冠距离超过四个节距的位置。为了选择正确张力值，应在以上显示数据之外，考虑到链条的重量和所用链条的种类。在第 10 页上的配套元件选择表中显示一些参考值可帮助您作选择。为了正确地将 ASSO 安置在设备内部，应注意链条所构成轨道的几何形状，进入张紧装置端的链条与张紧装置轴所成角度 δ 与从张紧装置出口端链条与张紧装置轴所成的角度相同。以这种方式，方柱将在轴的方向自由运动，不至于造成方柱和方柱滑动所在的主体之间的过高摩擦。

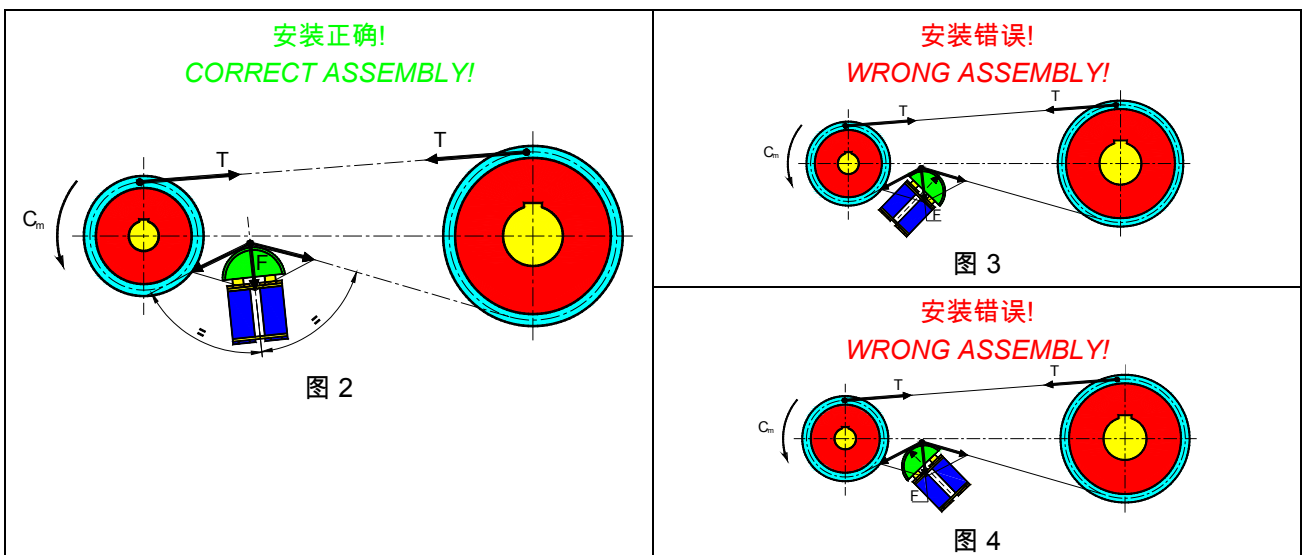
We recommend for this reason to choose a chain with an ultimate tensile stress from 5 to 8 times higher than T. On the driven branch, instead, the tension is almost nothing, in fact, the only acting force is the one given by the own weight of the chain.

The most usual inconvenience with this type of transmission, is the stretch of the chain and it causes:

- *a decrease in the winding angle, i.e. the number of spurs acting on the driving gear;*
- *lack of the steady in the gearing relation;*
- *anomalous contact among the chain rollers and the pinion spurs;*
- *early wear of both the chains and the pinions;*
- *high level of noise;*
- *vibrations, with propagation of the same to the overall structure of the machine;*
- *spur jumping;*
- *exit of chain from the transmission;*
- *breakage of the chain in the worst of the cases.*

It would be a mistake, however, to try to solve the problem of the chain loosening, tightening it too much during the phase of installation of the transmission because after short time the situations above described could become more marked.

Inevitable consequence is for this reason, the presence of an Automatic Chain Tightener that allows to recover during the time the loosening and to absorb constantly the vibrations. The automatic chain tightener must be positioned on the driven branch at the exit of the motor pinion at a distance higher than 4 pitches from the gear. For the choice of the right tension value, you will have to keep in mind, besides at the above mentioned values, of the weight of the chain and of the type of chain used. In the KIT table on page 10 are shown the reference values which can help you in the selection. For a right positioning of ASSO inside the plant, you will have to take attention that the trajectory geometry that the chain will assume, will be such that the angle δ obtained between the "incoming" chain at the tightener and the tightener axis is equal to the "outgoing" angle of the tightener and the tightener axis. In this manner the pin will be free to move in the axial direction without causing excessive friction between the pin and the inside of the body in which it slides.

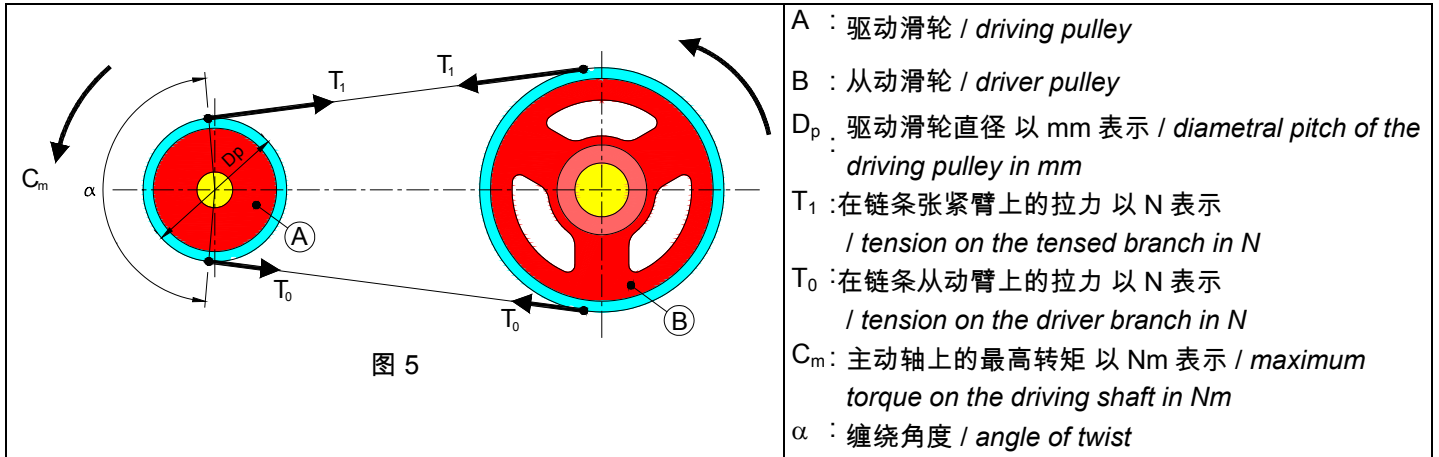


平型皮带或梯型皮带：

皮带传送系统一般由一个驱动滑轮和一个或多个从动滑轮构成。从一个轮到另一个轮的运动传导通过一些皮带进行，一般来讲皮带由塑性材料制成，其切面可为长方形（平带）或梯形（V带）。有关嵌齿轮皮带，参考相关于滚轮链条的章节。

Flat or trapezoidal belts:

Belt drives mainly consist of a driving pulley and one or more driver pulleys. The belts are transmitting the motion from one gear to the other, and they are generally made in plastic materials, shaped in rectangular sections (flat belts) or trapezoidal sections (trapezoidal belts). For timing belts, see the section on roller chains.



由于不可避免皮带长度伸展的错误，皮带传输不能保证完美恒定的传动比。在安装后，由于皮带和滑轮之间存在的轻度打滑，在特定的动力条件下，尤其在重新启动时，这些动态可造成整条皮带在驱动滑轮上的滑动。

这些滑动由以下因素造成：

- 皮带在驱动滑轮上的缠绕角度 α 小；
- 由于接触表面有油、脂肪存在，或由于伸长，造成低摩擦系数；
- 振动；
- 皮带预紧力低。

为了消除轻微打滑现象，有必要使用自动张紧装置，由此可保证对皮带加长做出修正并在皮带轨道的适当部位打一个结“n”而削减振动；并采用适当的安装定位，提高缠绕角度 α 。

在选择张紧装置时，应了解沿着皮带作用的拉力。为了计算皮带传送系统的拉力，由于在驱动轮上一般来讲缠绕角度 α 较小，有必要写下驱动滑轮旋转平衡方程式（方程式 1）和打滑极限条件（方程式 2）。一般来讲 α 应接近 π rad。

要解决的系统如下：

Belt drives are not synonymous with perfect and steady gear relation because the micro-slidings between belt and pulley cannot be avoided along the length which moves kinematically. Above all in special dynamic conditions such as re-starts, the entire belt of the driving pulley may slide.

Sliding depends on a number of factors:

- *low winding of the angle α of the belt on the driving pulley;*
- *low friction coefficient between the contact surfaces of the belt and the pulley given the presence of oil or fat or because of lengthening;*
- *vibrations;*
- *low pre-tensioning of the belt.*

To avoid micro-sliding, the use of an automatic tightener becomes a must and a way to recover any lengthening as well as vibrations with a “n” knot in a convenient position along the belt path. If appropriately placed, this also increases the winding angle α .

You can make the perfect selection of the tightener if you know which are the pulling tensions acting along the belt. The calculation of the pulls of a belt drive depends necessarily on the equation of balance at the rotation of the driving pulley (equation 1) together with the max allowed sliding condition (equation 2), because on the driving gear the winding angle α is usually lower. In general, α must be approximately π rad.

The system to be solved is the following:

$$\begin{cases} (T_1 - T_0) \cdot \frac{D_p}{2} \cdot \frac{1}{1000} = C_m \text{ (eq. 1)} \\ T_1 = T_0 e^{\eta \alpha} \text{ (eq. 2)} \end{cases}$$

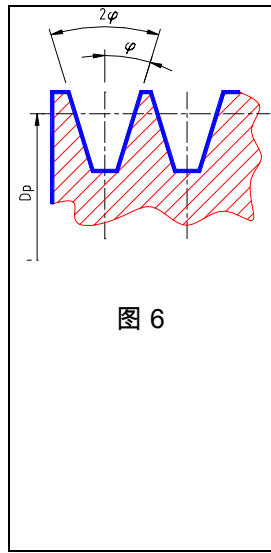


图 6

| | |
|----------------|---|
| e | 自然常数 e, 约为 2.72 Nepero's number, equal to 2,72 |
| η | 在皮带和滑轮之间的摩擦系数 (在 V 型皮带的情况下, 应将此系数除以 sin(φ), 在此 φ 为沟槽的半开角, 以 rad 表示) 图 6 Friction coefficient between belt and pulley (in case of V-type belts, this coefficient has to be divided by sin(φ), where φ is the angle of the semiaperture of the rim of the pulley in rad). Fig 6 |
| M _t | 在正常条件下所要传输的转矩 以 Nm 表示 Torque to be transmitted at uniform rating in Nm |
| C _m | 主动轴上最大转矩 以 Nm 表示 Maximum torque on the driving shaft in Nm |
| f _s | 工作系数从 2 到 5 / duty factor from 2 to 5 |

“C_m”是在启动过程中所达到的最高转矩,即在造成打滑的最严重条件下,以工作系数“f_s”(2÷5)乘以在正常条件下所要传输的转矩“M_t”,即 C_m=f_s·M_t。

自动张紧装置应安置于从动端,与驱动滑轮最接近的部位。由于在皮带拉紧器上的摩擦力和阻力基本上不存在,在张紧装置设置的皮带端的张力是恒定的。ASSO 应沿着张紧装置轴方向产生一份力量,这份力量有必要至少对在安置张紧装置的皮带端所受的两份张力之和作出平衡。为了 ASSO 的正确运转,其安装必须使得方柱,即弹簧的的滑动轴与皮带“进入”和“离开”张紧装置所形成的角度尽可能相等。图 7 显示一个正确安装的实例:ASSO 安装在从动端。传动系统的简图显示,如此离开驱动滑轮的皮带与垂直线成 γ 角,皮带从动端与垂直线成 β 角。为了正确运转,张紧装置 ASSO 中进入和离开张紧装置的皮带与装置轴线的角度等于: $\delta = \frac{(180^\circ - \gamma - \beta)}{2}$ 。这种位置的几何形状可使得装置正确运转,有效地对皮带所受力进行轴向平衡,由此在 ASSO 的方柱上不会产生任何垂直的力量。

“C_m” is the maximum value of the couple that can be reached during the start up, i.e. in the heaviest sliding conditions. This is obtained by multiplying the value of the couple to be driven “M_t” by a service factor “f_s” (2÷5) in regimen conditions, i.e. C_m= f_s · M_t.
The automatic tightener should be positioned in the driven branch as close as possible to the driving pulley. The tension in the belt branch on which the tightener acts is steady because the friction and contrasting forces on the belt tightener are almost zeroed. The force developed by the ASSO element should be at least necessary to re-balance the resulting value from the sum of the two components of the tension on the branch on which the tightener is applied, along the tightener axis itself. The ASSO element will work ideally if – when you position it – the angles which form between the sliding axis of the pin (i.e. the spring) and the belt “incoming” and “outgoing” from the tightener are as equal as possible. Figure 3 shows an example of a correct application: the ASSO element has been positioned along the driven branch. The gear configuration forms an angle of the belt going out of the driving pulley of γ degrees versus the vertical position, and on the driven pulley of β degrees versus the vertical position. The ASSO element works correctly when it is oriented in a way that the angle obtained from the belt “incoming” and “outgoing” from the tightener and its axis are even and equal to: $\delta = \frac{(180^\circ - \gamma - \beta)}{2}$. This positioning geometry allows the tightener to work correctly thus balancing axially the resultant of the forces acting on the belt so that no perpendicular force can develop along the ASSO pin.

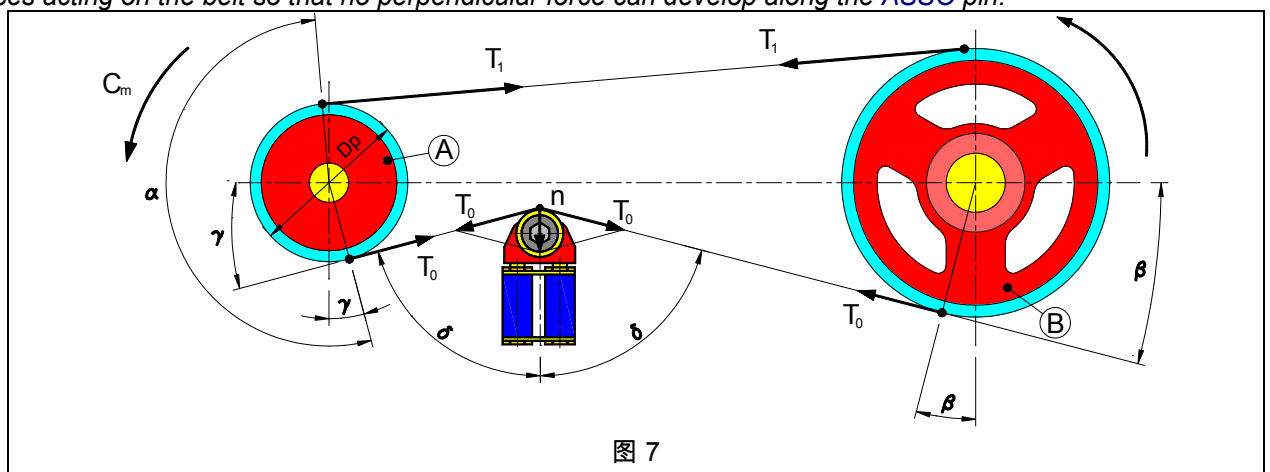
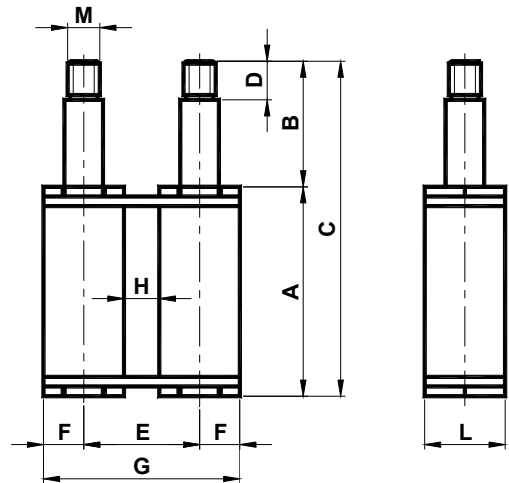


图 7

Asso 张紧装置 型号 **AB** / Asso Tensioner type **AB**



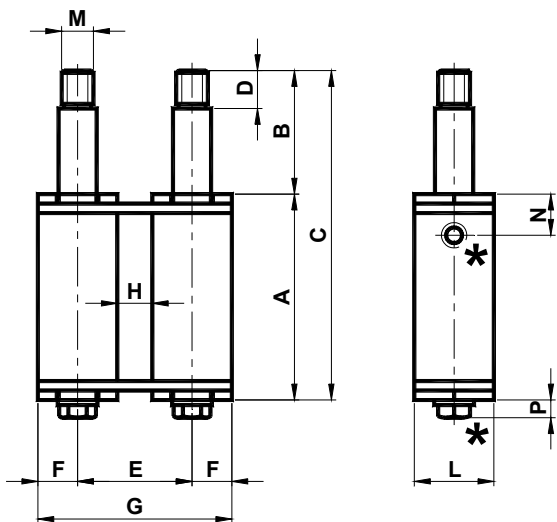
具双柱张紧装置组件。方形主体为铝制；联接部分、方柱和帽为镀锌钢制。轴衬为黄铜制。

Tensioner element with double pin. The square bodies are made in aluminium; the junctions, the pins and the caps are in galvanized steel. The bushings are in brass.

| 型号 Type | 编号 n° | A | B | C | D | E | F | G | H | L | M | N | P | Newton | 重量 Weight [Kg] | 型号 Type | 编号 n° |
|------------|----------|-------|----|-------|----|------|------|------|------|----|-----|----|-----|---------|-------------------|------------|----------|
| AB1 | AS010000 | 65 | 39 | 104 | 12 | 36 | 12.5 | 61 | 11 | 25 | M10 | 24 | / | 0 - 280 | 0.33 | ABB1 | AS010001 |
| AB2 | AS010010 | 79 | 50 | 129 | 15 | 42.5 | 15 | 72.5 | 12.5 | 30 | M10 | 27 | / | 0 - 420 | 0.58 | ABB2 | AS010011 |
| AB3 | AS010020 | 100.5 | 57 | 157.5 | 15 | 49.5 | 17.5 | 84.5 | 14.5 | 35 | M10 | / | 7.1 | 0 - 800 | 0.92 | ABB3 | AS010021 |

Asso 张紧装置 型号 **ABB** / Asso Tensioner type **ABB**

具预加负荷用螺钉 / with preloading screw

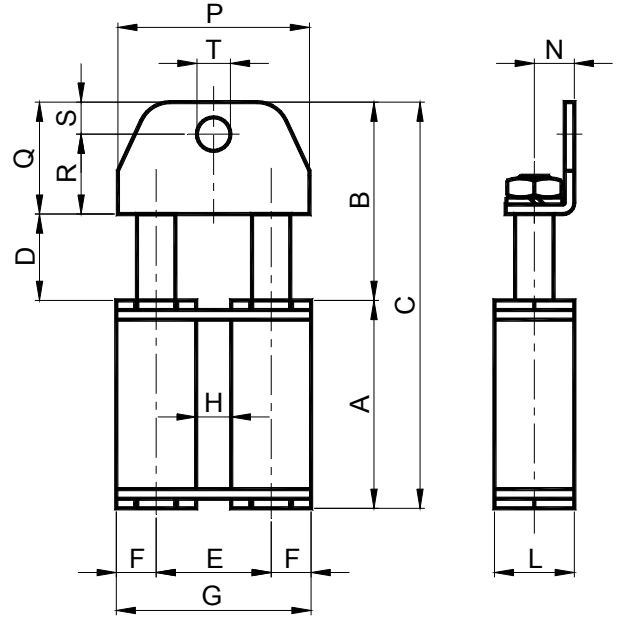


具双柱张紧装置组件。方形主体为铝制；联接部分、方柱和帽为镀锌钢制。轴衬为黄铜制。ABB 张紧装置组件具预加负荷用螺钉(尺寸 1 和 2, STEI (N)螺钉；尺寸 3, TE (P) 螺钉)，以便简化安装操作。

Tensioner element with double pin. The square bodies are made in aluminium; the junctions, the pins and the caps are in galvanized steel. The ABB tensioner element has a preloading screw (STEI Screw (N) in the sizes 1 and 2; TE screw (P) in the sizes 3) to make more easy the assembly operations.

* 预加负荷用螺钉 / Preloading screw

Asso 张紧装置 型号 AF / Asso Tensioner type AF



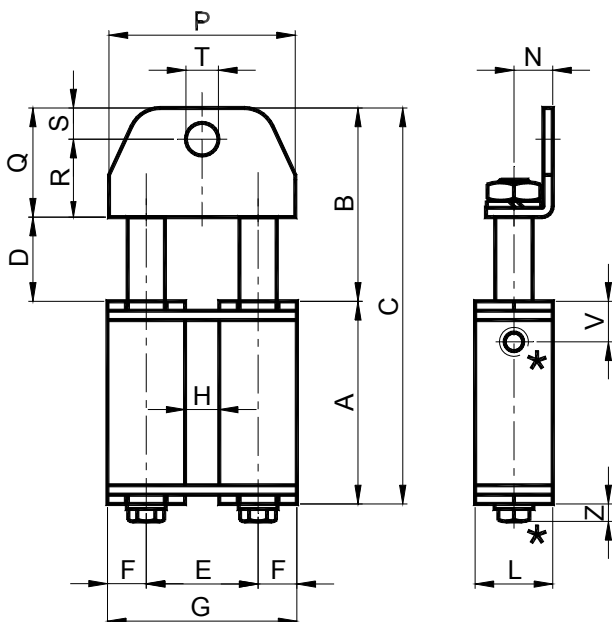
具双柱张紧装置组件。方形主体为铝制；联接部分、方柱和帽为镀锌钢制。轴衬为黄铜制。夹具为镀锌钢制。

Tensioner element with double pin. The square bodies are made in aluminium; the junctions, the pins and the caps are in galvanized steel. The bushings are in brass. The bracket is in galvanized steel.

| 型号 Type | 编号 n° | A | B | C | D | E | F | G | H | L | N | P | Q | R | S | ØT | V | Z | New. | 重量 Weight [Kg] | 型号 Type | 编号 n° |
|------------|----------|-------|-----|-------|----|------|------|------|------|----|------|----|----|----|----|------|----|-----|-------|-------------------|------------|----------|
| AF1-8 | AS010024 | 65 | 62 | 127 | 27 | 36 | 12.5 | 61 | 11 | 25 | 12.5 | 60 | 35 | 25 | 10 | 8.5 | 24 | / | 0-280 | 0.40 | AFB1-8 | AS010028 |
| AF1-10 | AS010025 | 65 | 62 | 127 | 27 | 36 | 12.5 | 61 | 11 | 25 | 12.5 | 60 | 35 | 25 | 10 | 10.5 | 24 | / | 0-280 | 0.40 | AFB1-10 | AS010029 |
| AF1-16 | AS010026 | 65 | 62 | 127 | 27 | 36 | 12.5 | 61 | 11 | 25 | 12.5 | 60 | 35 | 25 | 10 | 16 | 24 | / | 0-280 | 0.40 | AFB1-16 | AS010030 |
| AF2-10 | AS010035 | 79 | 85 | 164 | 35 | 42.5 | 15 | 72.5 | 12.5 | 30 | 15 | 70 | 50 | 38 | 12 | 10.5 | 27 | / | 0-420 | 0.70 | AFB2-10 | AS010039 |
| AF2-12 | AS010036 | 79 | 85 | 164 | 35 | 42.5 | 15 | 72.5 | 12.5 | 30 | 15 | 70 | 50 | 38 | 12 | 12.5 | 27 | / | 0-420 | 0.70 | AFB2-12 | AS010040 |
| AF2-16 | AS010037 | 79 | 85 | 164 | 35 | 42.5 | 15 | 72.5 | 12.5 | 30 | 15 | 70 | 50 | 38 | 12 | 16.5 | 27 | / | 0-420 | 0.70 | AFB2-16 | AS010041 |
| AF3-14 | AS010047 | 100.5 | 102 | 202.5 | 42 | 49.5 | 17.5 | 84.5 | 14.5 | 35 | 20 | 80 | 60 | 46 | 14 | M14 | / | 7.1 | 0-800 | 1.25 | AFB3-14 | AS010053 |
| AF3-16 | AS010048 | 100.5 | 102 | 202.5 | 42 | 49.5 | 17.5 | 84.5 | 14.5 | 35 | 20 | 80 | 60 | 46 | 14 | M16 | / | 7.1 | 0-800 | 1.25 | AFB3-16 | AS010054 |
| AF3-20 | AS010049 | 100.5 | 102 | 202.5 | 42 | 49.5 | 17.5 | 84.5 | 14.5 | 35 | 20 | 80 | 60 | 46 | 14 | M20 | / | 7.1 | 0-800 | 1.25 | AFB3-20 | AS010055 |

Asso 张紧装置 型号 AFB / Asso Tensioner type AFB

具预加负荷用螺钉 / with preloading screw

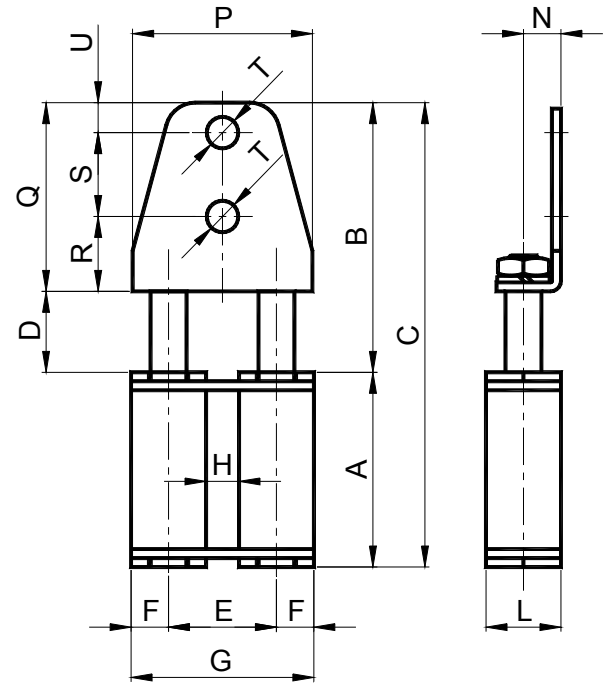


具双柱张紧装置组件。方形主体为铝制；联接部分、方柱和帽为镀锌钢制。轴衬为黄铜制。夹具为镀锌钢制。AFB 张紧装置组件具预加负荷用螺钉(尺寸 1 和 2, STEI (N)螺钉；尺寸 3, TE (Z) 钉),以便简化安装操作。

Tensioner element with double pin. The square bodies are made in aluminium; the junctions, the pins and the caps are in galvanized steel. The bushings are in brass. The bracket is in galvanized steel. The AFB tensioner element has a preloading screw (STEI screw (N) in the sizes 1 and 2; TE screw (Z) in the size 3) to make more easy the assembly operations.

* 预加负荷用螺钉 / Preloading screw

Asso 张紧装置 型号 AD / Asso Tensioner type AD



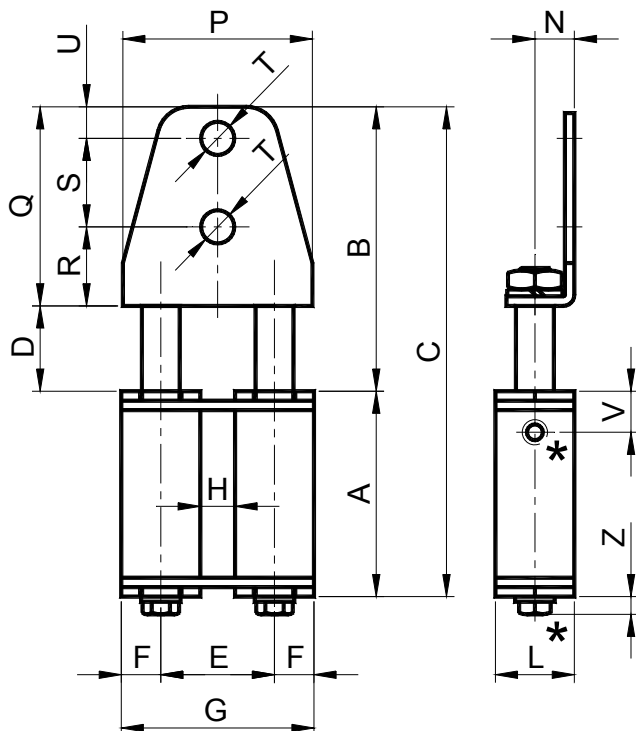
具双柱张紧装置组件。方形主体为铝制；联接部分、方柱和帽为镀锌钢制。轴衬为黄铜制。夹具为镀锌钢制。

Tensioner element with double pin. The square bodies are made in aluminium; the junctions, the pins and the caps are in galvanized steel. The bushings are in brass. The bracket is in galvanized steel.

| 型号 Type | 编号 n° | A | B | C | D | E | F | G | H | L | N | P | Q | R | S | ØT | U | V | Z | New. | 重量 Weight [Kg] | 型号 Type | 编号 n° |
|------------|----------|-------|-----|-----|----|------|------|------|------|----|------|----|----|----|----|------|----|----|-----|-------|-------------------|------------|----------|
| AD1-8 | AS010180 | 65 | 90 | 155 | 27 | 36 | 12.5 | 61 | 11 | 25 | 12.5 | 60 | 63 | 25 | 28 | 8.5 | 10 | 24 | / | 0-280 | 0.50 | ADB1-8 | AS010184 |
| AD1-10 | AS010181 | 65 | 90 | 155 | 27 | 36 | 12.5 | 61 | 11 | 25 | 12.5 | 60 | 63 | 25 | 28 | 10.5 | 10 | 24 | / | 0-280 | 0.50 | ADB1-10 | AS010185 |
| AD1-16 | AS010182 | 65 | 90 | 155 | 27 | 36 | 12.5 | 61 | 11 | 25 | 12.5 | 60 | 63 | 25 | 28 | 16 | 10 | 24 | / | 0-280 | 0.50 | ADB1-16 | AS010186 |
| AD2-10 | AS010190 | 79 | 112 | 191 | 35 | 42.5 | 15 | 72.5 | 12.5 | 30 | 15 | 70 | 77 | 40 | 25 | 10.5 | 12 | 27 | / | 0-420 | 0.90 | ADB2-10 | AS010194 |
| AD2-12 | AS010191 | 79 | 112 | 191 | 35 | 42.5 | 15 | 72.5 | 12.5 | 30 | 15 | 70 | 77 | 40 | 25 | 12.5 | 12 | 27 | / | 0-420 | 0.90 | ADB2-12 | AS010195 |
| AD2-16 | AS010192 | 79 | 112 | 191 | 35 | 42.5 | 15 | 72.5 | 12.5 | 30 | 15 | 70 | 77 | 40 | 25 | 16.5 | 12 | 27 | / | 0-420 | 0.90 | ADB2-16 | AS010196 |
| AD3-16 | AS010205 | 100.5 | 130 | / | 42 | 49.5 | 17.5 | 84.5 | 14.5 | 35 | 20 | 80 | 88 | 46 | 28 | M16 | 14 | / | 7.1 | 0-800 | 1.50 | ADB3-16 | AS010209 |
| AD3-20 | AS010206 | 100.5 | 130 | / | 42 | 49.5 | 17.5 | 84.5 | 14.5 | 35 | 20 | 80 | 88 | 46 | 28 | M20 | 14 | / | 7.1 | 0-800 | 1.50 | ADB3-20 | AS010210 |

Asso 张紧装置 型号 ADB / Asso Tensioner type ADB

具预加负荷用螺钉 / with preloading screw



具双柱张紧装置组件。方形主体为铝制，联接部分、方柱和帽为镀锌钢制。轴衬为黄铜制。夹具为镀锌钢制。ADB 张紧装置组件具预加负荷用螺钉(尺寸 1 和 2, STEI (V) 螺钉；尺寸 3, TE (Z) 螺钉), 以便简化安装操作。

Tensioner element with double pin. The square bodies are made in aluminium; the junctions, the pins and the caps are in galvanized steel. The bushings are in brass. The bracket is in galvanized steel. The ADB tensioner element has a preloading screw (STEI (V) in the sizes 1 and 2; TE screw (Z) in the size 3) to make more easy the assembly operations.

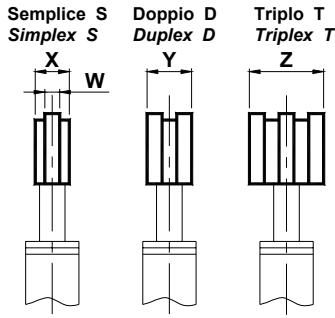
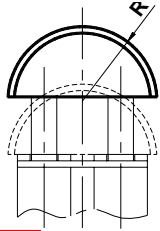
* 预加负荷用螺钉 / Preloading screw

附件列表 / Accessories table

| 链条 - Chain DIN 8187 | | 型号 - Type | | | | | | 尺寸 Size | DP | DA | 皮带 最高宽度 max belt width | | |
|--|-------------|---|---|---|---|---|--|---|---|---|---------------------------------|------|------|
| ISO | 节距 Pitch | T | R | S | P | C | TL | | | | | 第11页 | 第11页 |
|  | |  |  |  |  |  |  |  |  |  | | | |
| 06-B1 | 3/8"x7/32" | T1 3/8" S | R1 3/8" S | S1 3/8" S | P1 3/8" S | C1 3/8" S | TL1 3/8" S | 1 | DP30 | DA30 | 30 | | |
| 08-B1 | 1/2"x5/16" | T1 1/2" S | R1 1/2" S | S1 1/2" S | P1 1/2" S | C1 1/2" S | TL1 1/2" S | 1 | DP40 | DA40 | 40 | | |
| 10-B1 | 5/8"x3/8" | T1 5/8" S | R1 5/8" S | | | | | 1 | | | | | |
| 10-B1 | 5/8"x3/8" | T2 5/8" S | R2 5/8" S | S2 5/8" S | P2 5/8" S | C2 5/8" S | TL2 5/8" S | 2 | DP40 | DA40 | 40 | | |
| 12-B1 | 3/4"x7/16" | T2 3/4" S | R2 3/4" S | S2 3/4" S | P2 3/4" S | C2 3/4" S | TL2 3/4" S | 2 | DP60 | DA60 | 55 | | |
| 16-B1 | 1"x17.02mm | T3 1" S | R3 1" S | S3 1" S | P3 1" S | C3 1" S | TL3 1" S | 3 | | | | | |
| 20-B1 | 1"1/4x3/4" | T3 1" 1/4 S | R3 1" 1/4 S | S3 1" 1/4 S | | | | 3 | | | | | |
| 24-B1 | 1"1/2x1" | T3 1" 1/2 S | R3 1" 1/2 S | S3 1" 1/2 S | | | | 3 | | | | | |
| 06-B2 | 3/8"x7/32" | T1 3/8" D | R1 3/8" D | S1 3/8" D | | | TL1 3/8" D | 1 | | | | | |
| 06-B2 | 3/8"x7/32" | | | | P2 3/8" D | P2 3/8" D | | 2 | | | | | |
| 08-B2 | 1/2"x5/16" | T1 1/2" D | R1 1/2" D | S1 1/2" D | | | TL1 1/2" D | 1 | | | | | |
| 08-B2 | 1/2"x5/16" | | | | P2 1/2" D | C2 1/2" D | | 2 | | | | | |
| 10-B2 | 5/8"x3/8" | T1 5/8" D | R1 5/8" D | | | | | 1 | | | | | |
| 10-B2 | 5/8"x3/8" | T2 5/8" D | R2 5/8" D | S2 5/8" D | | | TL2 5/8" D | 2 | | | | | |
| 10-B2 | 5/8"x3/8" | | | | P3 5/8" D | C3 5/8" D | | 3 | | | | | |
| 12-B2 | 3/4"x7/16" | T2 3/4" D | R2 3/4" D | S2 3/4" D | | | TL2 3/4" S | 2 | | | | | |
| 12-B2 | 3/4"x7/16" | | | | P3 3/4" D | C3 3/4" D | | 3 | | | | | |
| 16-B2 | 1"x17.02mm | T3 1" D | R3 1" D | S3 1" D | P3 1" D | C3 1" D | TL3 1" D | 3 | | | | | |
| 20-B2 | 1"1/4x3/4" | T3 1" 1/4 D | R3 1" 1/4 D | S3 1" 1/4 D | | | | 3 | | | | | |
| 24-B2 | 1"1/2x1" | T3 1" 1/2 D | R3 1" 1/2 D | S3 1" 1/2 D | | | | 3 | | | | | |
| 06-B3 | 3/8"x7/32" | T1 3/8" T | R1 3/8" T | S1 3/8" T | | | | 1 | | | | | |
| 08-B3 | 1/2"x5/16" | T1 1/2" T | R1 1/2" T | S1 1/2" T | | | | 1 | | | | | |
| 10-B3 | 5/8"x3/8" | T1 5/8" T | R1 5/8" T | | | | | 1 | | | | | |
| 10-B3 | 5/8"x3/8" | T2 5/8" T | R2 5/8" T | S2 5/8" T | | | | 2 | | | | | |
| 12-B3 | 3/4"x7/16" | T2 3/4" T | R2 3/4" T | S2 3/4" T | | | | 2 | | | | | |
| 16-B3 | 1"x17.02mm | T3 1" T | R3 1" T | S3 1" T | | | | 3 | | | | | |
| 20-B3 | 1"1/4x3/4" | T3 1" 1/4 T | R3 1" 1/4 T | S3 1" 1/4 T | | | | 3 | | | | | |
| 24-B3 | 1"1/2x1" | T3 1" 1/2 T | R3 1" 1/2 T | S3 1" 1/2 T | | | | 3 | | | | | |

张紧装置附件 型号 T

Accessories for chain Tighteners type T



具半圆形轮廓滑块，适用于小轴距和靠近链轮的安装。

材料：高分子密度聚乙烯。

工作速度 ≤20 m/min。工作温度 ≤70°C。

Semi-circular sliding block suitable for reduced interaxis or for installation closed to the pinion.

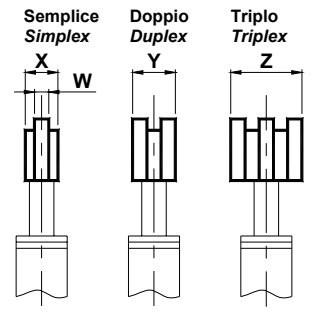
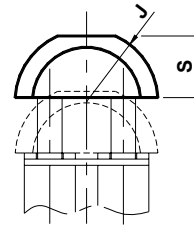
Material: Polyethylene high molecular density.

Operating speed ≤20 m/min. Sliding block operating temperature ≤70°C.



张紧装置附件 型号 R

Accessories for chain Tighteners type R



具半圆形轮廓滑块，适用于大轴距。

材料：高分子密度聚乙烯。

工作速度 ≤20 m/min。工作温度 ≤70°C。

Semi-circular lowered sliding block suitable for large interaxis.

Material: Polyethylene with high molecular density.

Operating speed ≤20 m/min. Sliding block operating temperature ≤70°C.



| 型号 Type | 编号 S | 编号 D | 编号 T | J | R | S | W | X | Y | Z | 重量 Weight [Kg] | | | 型号 Type | 编号 S | 编号 D | 编号 T |
|------------|----------|----------|----------|----|----|----|----|----|------|-----|-------------------|------|------|------------|----------|----------|----------|
| | | | | | | | | | | | S | D | T | | | | |
| T1 3/8" | AS01006 | AS01007 | AS01009 | 35 | 35 | 30 | 5 | 1 | 18 | 25 | 0.03 | 0.03 | 0.04 | R1 3/8" | AS010396 | AS010411 | AS010426 |
| T1 1/2" | AS01006 | AS01007 | AS01009 | 35 | 35 | 30 | 7 | 1 | 20.5 | 34 | 0.03 | 0.03 | 0.06 | R1 1/2" | AS010397 | AS010412 | AS010427 |
| T1 5/8" | AS01006 | AS01007 | AS01009 | 45 | 35 | 37 | 9 | 1 | 25 | 42 | 0.03 | 0.03 | 0.06 | R1 5/8" | AS010398 | AS010413 | AS010428 |
| T2 5/8" | AS01006 | AS01007 | AS01009 | 45 | 45 | 37 | 9 | 1 | 25 | 42 | 0.04 | 0.08 | 0.12 | R2 5/8" | AS010399 | AS010414 | AS010429 |
| T2 3/4" | AS01006 | AS01008 | AS01009 | 45 | 45 | 37 | 1 | 1 | 30 | 49 | 0.05 | 0.09 | 0.14 | R2 3/4" | AS010400 | AS010415 | AS010430 |
| T3 1" | AS01006 | AS01008 | AS01009 | 55 | 55 | 46 | 1 | 1 | 47 | 79 | 0.08 | 0.20 | 0.32 | R3 1" | AS010401 | AS010416 | AS010431 |
| T3 1" 1/4 | AS01006 | AS01008 | AS01009 | 55 | 55 | 46 | 1 | 2 | 54 | 91 | 0.32 | 0.50 | 0.60 | R3 1" 1/4 | AS010402 | AS010417 | AS010432 |
| T3 1" 1/2 | AS010068 | AS010083 | AS010098 | 55 | 55 | 46 | 24 | 24 | 72 | 120 | 0.33 | 0.54 | 0.65 | R3 1" 1/2 | AS010403 | AS010418 | AS010433 |

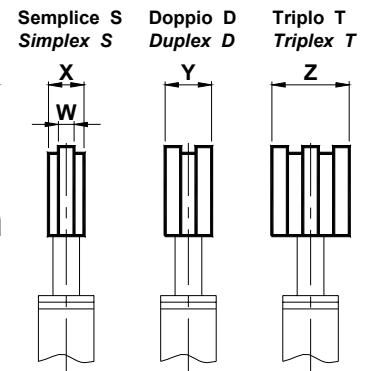
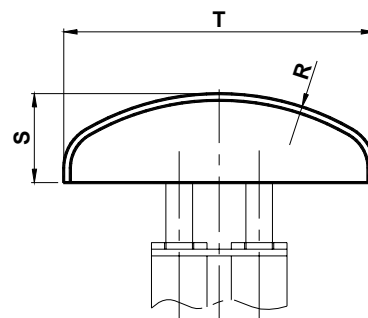
张紧装置附件 型号 S / Accessories for chain tighteners type S

适用于大轴距的滑块。材料：高分子密度聚乙烯。

工作速度 ≤20 m/min。工作温度 ≤70°C。

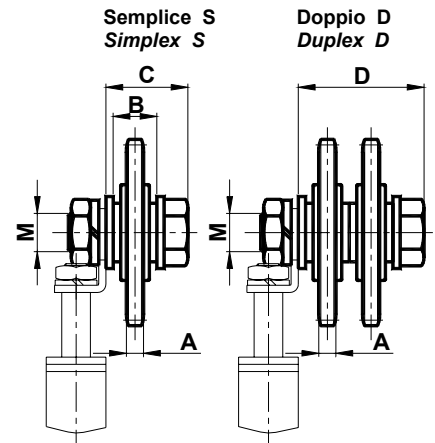
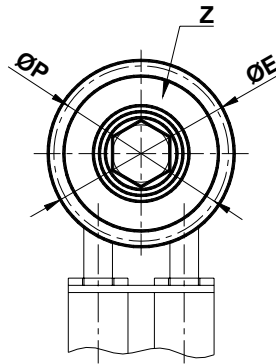
Sliding block for large interaxis. Material: Polyethylene with high molecular density.

Operating speed ≤20 m/min. Sliding block operating temperature ≤70°C.



| 型号 Type | 编号 S | 编号 D | 编号 T | R | S | T | W | X | Y | Z | 重量 Weight [Kg] | | |
|------------|----------|----------|----------|-----|----|-----|----|----|----|------|-------------------|------|------|
| | | | | | | | | | | | S | D | T |
| S1 3/8" | AS010115 | AS010130 | AS010145 | 120 | 40 | 140 | 5 | 20 | 20 | 25 | 0.08 | 0.08 | 0.10 |
| S1 1/2" | AS010116 | AS010131 | AS010146 | 120 | 40 | 140 | 7 | 20 | 20 | 35 | 0.08 | 0.08 | 0.12 |
| S2 5/8" | AS010117 | AS010132 | AS010147 | 140 | 40 | 140 | 9 | 20 | 25 | 42 | 0.10 | 0.12 | 0.30 |
| S2 3/4" | AS010118 | AS010133 | AS010148 | 140 | 40 | 140 | 11 | 20 | 30 | 49 | 0.12 | 0.65 | 0.35 |
| S3 1" | AS010119 | AS010134 | AS010149 | 160 | 40 | 140 | 16 | 25 | 45 | 79.5 | 0.20 | 0.50 | 0.80 |
| S3 1" 1/4 | AS010120 | AS010135 | AS010150 | 160 | 40 | 140 | 18 | 25 | 54 | 90 | 0.80 | 1.30 | 1.50 |
| S3 1" 1/2 | AS010121 | AS010136 | AS010151 | 160 | 40 | 140 | 24 | 25 | 72 | 120 | 0.80 | 1.30 | 1.60 |

张紧装置附件 型号 P / Accessories for chain tighteners type P



具底部扩大轴承的钢制链轮。

工作速度 ≤ 60 m/min.

工作温度 $\leq 100^\circ\text{C}$ 。

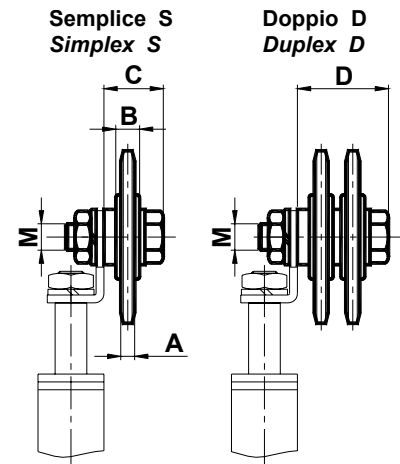
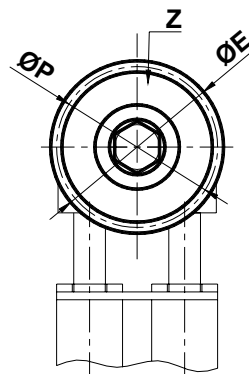
Steel pinion with enlarged bearing.

Operating speed ≤ 60 m/min.

Operating temperature $\leq 100^\circ\text{C}$ 。

| 型号 Type | 编号 S | 编号 D | A | B | C | D | ØE | M | ØP | Z | 重量 Weight [Kg] | |
|------------|----------|----------|------|------|------|------|-------|-----|-------|----|----------------|------|
| | | | | | | | | | | | S | D |
| P1 3/8" | AS010291 | / | 5.3 | 18.3 | 31.3 | / | 68.0 | M16 | 63.90 | 21 | 0.25 | / |
| P1 1/2" | AS010292 | / | 7.2 | 18.3 | 31.3 | / | 77.8 | M16 | 73.14 | 18 | 0.35 | / |
| P2 3/8" | / | AS010301 | 5.3 | 18.3 | / | 49.6 | 68.0 | M16 | 63.90 | 21 | / | 0.40 |
| P2 1/2" | / | AS010302 | 7.2 | 18.3 | / | 49.6 | 77.8 | M16 | 73.14 | 18 | / | 0.60 |
| P2 5/8" | AS010293 | / | 9.1 | 18.3 | 31.3 | / | 93.0 | M16 | 86.39 | 17 | 0.50 | / |
| P2 3/4" | AS010294 | / | 11.1 | 18.3 | 31.3 | / | 99.8 | M16 | 91.63 | 15 | 0.65 | / |
| P3 5/8" | / | AS010303 | 9.1 | 18.3 | / | 49.6 | 93.0 | M16 | 86.39 | 17 | / | 0.89 |
| P3 3/4" | / | AS010304 | 11.1 | 18.3 | / | 49.6 | 99.8 | M16 | 91.63 | 15 | / | 1.15 |
| P3 1" | AS010295 | AS010305 | 16.2 | 17.7 | 36.7 | 68.4 | 109.0 | M20 | 94.14 | 12 | 0.98 | 1.76 |

张紧装置附件 型号 C / Accessories for chain tighteners type C



具标准轴承的钢制链轮。

工作温度 $\leq 100^\circ\text{C}$ 。

工作速度 ≤ 60 m/min.

Steel pinion with standard bearing.

Operating temperature $\leq 100^\circ\text{C}$ 。

Operating speed ≤ 60 m/min.

| 型号 Type | 编号 S | 编号 D | A | B | C | D | ØE | M | ØP | Z | 重量 Weight [Kg] | |
|------------|----------|----------|------|----|----|------|-------|-----|--------|----|----------------|------|
| | | | | | | | | | | | S | D |
| C1 3/8" | AS010440 | / | 5.3 | 9 | 20 | / | 49.3 | M10 | 45.81 | 15 | 0.10 | / |
| C1 1/2" | AS010441 | / | 7.2 | 9 | 20 | / | 65.5 | M10 | 61.09 | 15 | 0.19 | / |
| C2 3/8" | / | AS010450 | 5.3 | 9 | / | 31 | 49.3 | M10 | 45.81 | 15 | / | 0.22 |
| C2 1/2" | / | AS010451 | 7.2 | 9 | / | 33 | 65.5 | M10 | 61.09 | 15 | / | 0.36 |
| C2 5/8" | AS010442 | / | 9.1 | 12 | 25 | / | 83.0 | M12 | 76.36 | 15 | 0.35 | / |
| C2 3/4" | AS010443 | / | 11.1 | 12 | 25 | / | 99.8 | M12 | 91.63 | 15 | 0.70 | / |
| C3 5/8" | / | AS010452 | 9.1 | 12 | / | 42 | 83.0 | M12 | 76.36 | 15 | / | 0.58 |
| C3 3/4" | / | AS010453 | 11.1 | 12 | / | 44.5 | 99.8 | M12 | 91.63 | 15 | / | 1.24 |
| C3 1" | AS010444 | AS010454 | 16.2 | 15 | 34 | 66 | 117.0 | M20 | 106.12 | 13 | 1.12 | / |

张紧装置附件 型号 TL / Accessories for chain tighteners type TL



具半圆形轮廓滑块，适用于小轴距和靠近链轮的安装。

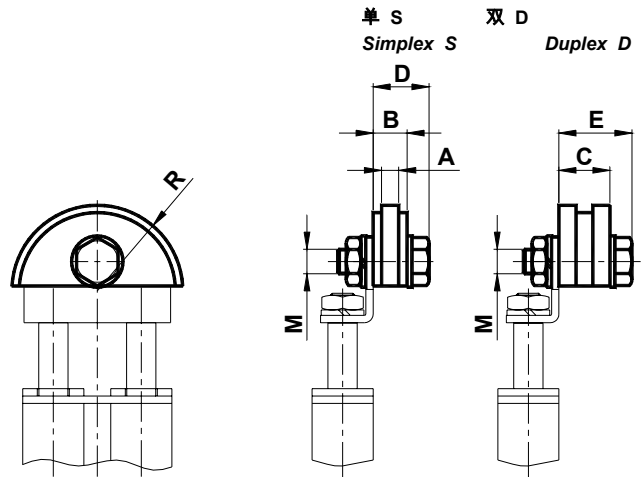
材料：高分子密度聚乙烯。

工作速度 ≤ 20 m/min。工作温度 $\leq 70^\circ\text{C}$ 。

Semi-circular sliding block suitable for reduced interaxis or for installation closed to the pinion. Material: Polyethylene with high molecular density.

Operating speed ≤ 20 m/min.

Sliding block operating temperature $\leq 70^\circ\text{C}$.



| 型号 Type | 编号 S | 编号 D | A | B | C | D | E | M | R | 重量 Weight [Kg] | |
|------------|----------|----------|----|------|------|------|------|-----|----|----------------|------|
| | | | | | | | | | | S | D |
| TL1 3/8" | AS010351 | AS010366 | 5 | 10 | 18 | 19 | 27 | M10 | 35 | 0.07 | 0.08 |
| TL1 1/2" | AS010352 | AS010367 | 7 | 14 | 20.5 | 23 | 29.5 | M10 | 35 | 0.09 | 0.10 |
| TL2 5/8" | AS010354 | AS010369 | 9 | 16.5 | 25 | 25.5 | 34 | M10 | 45 | 0.11 | 0.12 |
| TL2 3/4" | AS010355 | AS010370 | 11 | 17.5 | 30 | 26.5 | 39 | M10 | 45 | 0.11 | 0.13 |
| TL3 1" | AS010356 | AS010371 | 16 | 18 | 47 | 28.5 | 57.5 | M12 | 55 | 0.19 | 0.27 |

皮带拉紧装置附件 / Accessories for belt-tighteners

聚酰胺滚轮 - 型号 DP

Rollerset of polyamid - Type DP

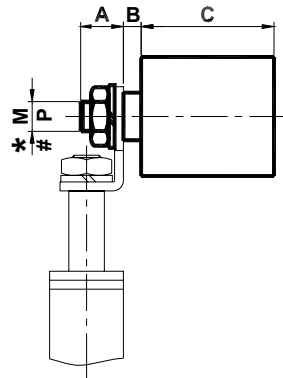
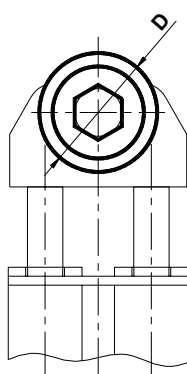
* 具螺钉 M / With M screw



镀锌钢滚轮 - 型号 DA

Rollerset of galvanized steel - Type DA

具螺钉 P / With P screw



塑性材料制 DP 滚轮，在润滑轴承上安装。

工作温度 $\leq 70^\circ\text{C}$ 。

The roller DP is in plastic installed on greased bearings. Roller operating temperature $\leq 70^\circ\text{C}$.

镀锌钢制 DP 滚轮，在润滑轴承上安装。

工作温度 $\leq 100^\circ\text{C}$ 。

The DA roller is in galvanized steel installed on greased bearings. Operating temperature $\leq 100^\circ\text{C}$.

| 型号 Type | 编号 n° | 重量 Weight [Kg] | A | B | C | ØD | *M | #P | 张紧元件 Tension Elements | 型号 Type | 编号 n° | 重量 Weight [Kg] |
|------------|----------|-------------------|----|---|----|----|-----|-----|--------------------------|------------|----------|-------------------|
| DP30 | CE070300 | 0.08 | 13 | 3 | 35 | 30 | M 8 | M 8 | 1 | DA30 | CE070285 | 0.16 |
| DP40 | CE070302 | 0.18 | 16 | 6 | 45 | 40 | M10 | M10 | 1-2 | DA40 | CE070287 | 0.37 |
| DP60 | CE070304 | 0.40 | 21 | 8 | 60 | 60 | M12 | M16 | 3 | DA60 | CE070289 | 0.85 |

简单元件 / SIMPLE ELEMENTS

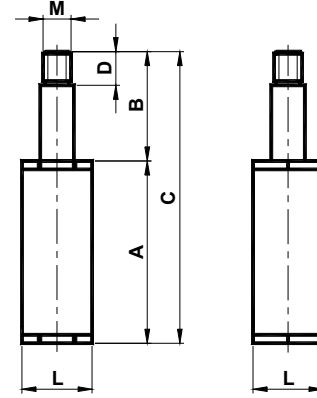
SB、SA 和 SE 产品由具有极其简单构造的元件组成，正是由于其设计型式，可简单地在解决中小张紧问题的不同领域应用。MB 和 ME 产品为小型张紧装置。

除了在产品目录中指出的固定系统以外，我们可根据您的特殊需要设计适当的特殊元件。

The products *SB, SA and SE* are elements, which have an extremely simple composition and thanks to their constructive form they can be easily used in the different application fields in order to solve small or medium tension-problems. *MB and ME* product are mini-tightener. Besides the fixing systems you can find in this catalogue, we are able to study for you particular elements suitable to satisfy Your specific needs.

| | A | B | C | D | |
|---|--------------------------|--------------------------|-------------------------|--------------------------|---|
| 1 | SB 第 15 页 | SBB 第 15 页 | SA 第 16 页 | SAB 第 16 页 | 1 |
| 2 | SE 第 17 页 | SEB 第 17 页 | MB 第 23 页 | ME 第 23 页 | 2 |
| 3 | F 第 18 页 | FD 第 18 页 | L 第 19 页 | STL 第 20 页 | 3 |
| 4 | SPL 第 21 页 | SCL 第 21 页 | ST 第 22 页 | SP 第 22 页 | 4 |
| 5 | STT 第 24 页 | AH 第 28 页 | TH 第 29 页 | DPH 第 29 页 | 5 |
| 6 | DAH 第 29 页 | PH 第 30 页 | CH 第 30 页 | | 6 |
| | A | B | C | D | |

Asso 张紧装置 型号 **SB** / Asso Tensioner type **SB**



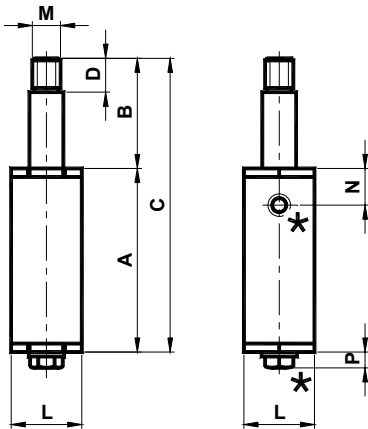
具单柱张紧装置组件。方形主体为铝制；方柱和帽为镀锌钢制。轴衬为黄铜制。

Tensioner element with single pin. The square body is made in aluminium; the pin and the cap are in galvanized steel. The bushing is in brass.

| 型号 Type | 编号 | A | B | C | D | L | M | N | P | Newton | 重量 Weight [Kg] | 型号 Type | 编号 |
|------------|----------|------|----|-------|----|----|-----|----|-----|--------|-------------------|------------|----------|
| SB1 | AS010470 | 59 | 39 | 98 | 12 | 25 | M10 | 21 | / | 0-140 | 0.16 | SBB1 | AS010480 |
| SB2 | AS010471 | 71 | 50 | 121 | 15 | 30 | M10 | 23 | / | 0-210 | 0.25 | SBB2 | AS010481 |
| SB3 | AS010472 | 92.5 | 57 | 149.5 | 15 | 35 | M10 | / | 7.1 | 0-400 | 0.43 | SBB3 | AS010482 |

Asso 张紧装置 型号 **SBB** / Asso Tensioner type **SBB**

具预加负荷用螺钉 / with preloading screw

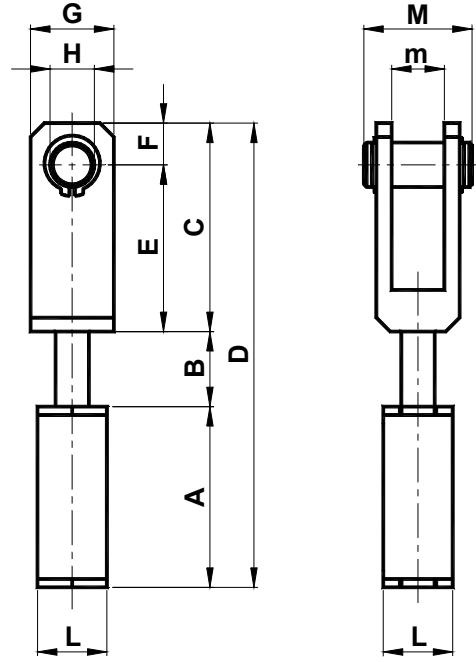


具单柱张紧装置组件。方形主体为铝制；方柱、联接部分、方柱和帽为镀锌钢制。轴衬为黄铜制。SBB 张紧装置组件具预加负荷用螺钉(尺寸 1 和 2, STEI (N) 螺钉；尺寸 3, TE (P) 螺钉)，以便简化安装操作。

Tensioner element with single pin. The square body is made in aluminium; the pin and the cap are in galvanized steel. The bushing is in brass. The SBB tensioner element has a preloading screw (STEI screw (N) in the sizes 1 and 2; TE screw (P) in the size 3) to make more easy the assembly operations.

* 预加负荷用螺钉 / Preloading screw

Asso 张紧装置 型号 SA / Asso Tensioner type SA



具单柱张紧装置组件。方形主体为铝制；方柱和帽为镀锌钢制。

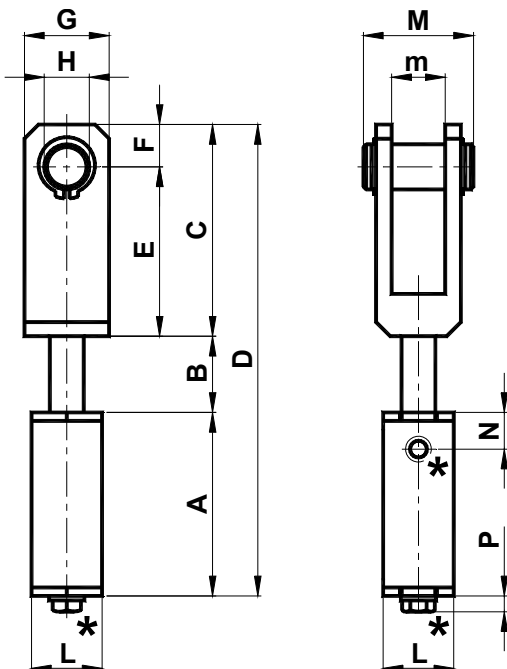
轴衬为黄铜制。支架可为铝制或镀锌钢制。

Tensioner element with single pin. The square body is made in aluminium; the pin and the cap are in galvanized steel. The bushing is in brass. The fork can be in aluminium or painted steel.

| 型号 Type | 编号 | A | B | C | D | E | F | G | H | L | M | m | N | P | Newton | 重量 Weight in kg | 型号 Type | 编号 |
|------------|----------|------|----|----|-------|------|------|----|----|----|-----|----|----|-----|--------|-----------------------|------------|----------|
| SA1/0 | AS010489 | 59 | 27 | 75 | 161 | 60 | 15 | 30 | 16 | 25 | 40 | 19 | 21 | / | 0-140 | 0.31 | SAB1/0 | AS010509 |
| SA2/0 | AS010490 | 71 | 35 | 75 | 181 | 60 | 15 | 30 | 16 | 30 | 40 | 19 | 23 | / | 0-140 | 0.40 | SAB2/0 | AS010510 |
| SA2/1 | AS010491 | 71 | 35 | 85 | 191 | 70 | 15 | 30 | 16 | 30 | 45 | 19 | 23 | / | 0-210 | 0.44 | SAB2/1 | AS010511 |
| SA2/2 | AS010492 | 71 | 35 | 75 | 181 | 60 | 15 | 30 | 16 | 30 | 60 | 37 | 23 | / | 0-210 | 0.45 | SAB2/2 | AS010512 |
| SA2/3 | AS010493 | 71 | 35 | 85 | 191 | 70 | 15 | 30 | 16 | 30 | 65 | 37 | 23 | / | 0-400 | 0.50 | SAB2/3 | AS010513 |
| SA3/4 | AS010494 | 92.5 | 42 | 85 | 219.5 | 70 | 15 | 35 | 16 | 35 | 80 | 56 | / | 7.1 | 0-400 | 1.03 | SAB3/4 | AS010514 |
| SA3/5 | AS010495 | 92.5 | 42 | 95 | 229.5 | 77.5 | 17.5 | 40 | 20 | 35 | 45 | 19 | / | 7.1 | 0-400 | 0.72 | SAB3/5 | AS010515 |
| SA3/6 | AS010496 | 92.5 | 42 | 95 | 229.5 | 77.5 | 17.5 | 40 | 20 | 35 | 77 | 51 | / | 7.1 | 0-400 | 1.30 | SAB3/6 | AS010516 |
| SA3/7 | AS010497 | 92.5 | 42 | 95 | 229.5 | 77.5 | 17.5 | 40 | 20 | 35 | 110 | 80 | / | 7.1 | 0-400 | 1.63 | SAB3/7 | AS010517 |

Asso 张紧装置 型号 SAB / Asso Tensioner type SAB

具预加负荷用螺钉 / with preloading screw

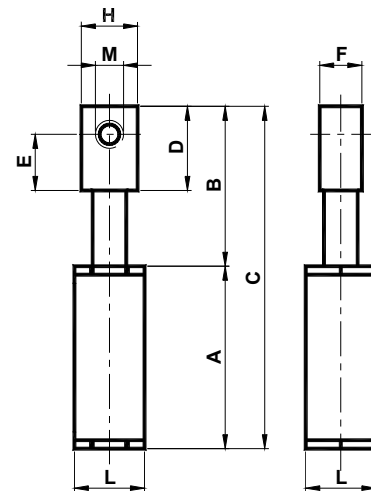


具单柱张紧装置组件。方形主体为铝制；方柱和帽为镀锌钢制。轴衬为黄铜制。支架可为铝制或镀锌钢制。SAB 张紧装置组件具预加负荷用螺钉(尺寸 1 和 2, STEI (N) 螺钉；尺寸 3, TE (P) 螺钉)，以便简化安装操作。

Tensioner element with single pin. The square body is made in aluminium; the pin and the cap are in galvanized steel. The bushing is in brass. The fork can be in aluminium or painted steel. The SAB tensioner element has a preloading screw (STEI screw (N) in the sizes 1 and 2; TE screw (P) in the size 3) to make more easy the assembly operations.

* 预加负荷用螺钉 / Preloading screw

Asso 张紧装置 型号 SE / Asso Tensioner type SE



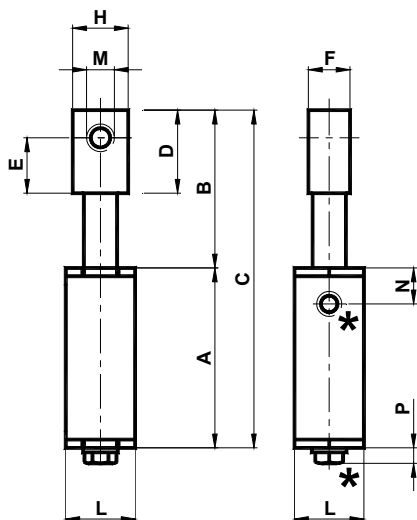
具单柱张紧装置组件。方形主体为铝制；方柱和帽为镀锌钢制。轴衬为黄铜制。薄板为镀锌钢制。

Tensioner element with single pin. The square body is made in aluminium; the pin and the cap are in galvanized steel. The bushing is in brass. The plaque is in galvanized steel.

| 型号 Type | 编号 | A | B | C | D | E | F | H | L | M | N | P | Newton | 重量 Weight in kg | 型号 Type | 编号 |
|------------|----------|------|----|-------|----|----|----|----|----|-----|----|-----|--------|-----------------------|------------|----------|
| SE1-8 | AS010525 | 59 | 57 | 116 | 30 | 20 | 15 | 20 | 25 | M 8 | 18 | / | 0-140 | 0.22 | SEB1-8 | AS010540 |
| SE1-10 | AS010526 | 59 | 57 | 116 | 30 | 20 | 15 | 20 | 25 | M10 | 18 | / | 0-140 | 0.20 | SEB1-10 | AS010541 |
| SE1-16 | AS010527 | 59 | 57 | 116 | 30 | 20 | 15 | 30 | 25 | M16 | 18 | / | 0-140 | 0.25 | SEB1-16 | AS010542 |
| SE2-10 | AS010528 | 71 | 65 | 136 | 30 | 20 | 15 | 20 | 30 | M10 | 20 | / | 0-210 | 0.31 | SEB2-10 | AS010543 |
| SE2-16 | AS010529 | 71 | 65 | 136 | 30 | 20 | 15 | 30 | 30 | M16 | 20 | / | 0-210 | 0.34 | SEB2-16 | AS010544 |
| SE3-12 | AS010530 | 92.5 | 72 | 164.5 | 30 | 20 | 15 | 20 | 35 | M12 | / | 7.1 | 0-400 | 0.49 | SEB3-12 | AS010545 |
| SE3-16 | AS010531 | 92.5 | 72 | 164.4 | 30 | 20 | 15 | 30 | 35 | M16 | / | 7.1 | 0-400 | 0.52 | SEB3-16 | AS010546 |

Asso 张紧装置 型号 SEB / Asso Tensioner type SEB

具预加负荷用螺钉 / with preloading screw



具单柱张紧装置组件。方形主体为铝制；方柱和帽为镀锌钢制。轴衬为黄铜制。薄板为镀锌钢制。SEB 张紧装置组件具预加负荷用螺钉(尺寸 1 和 2, STEI (N)螺钉；尺寸 3, TE (P) 螺钉)，以便简化安装操作。

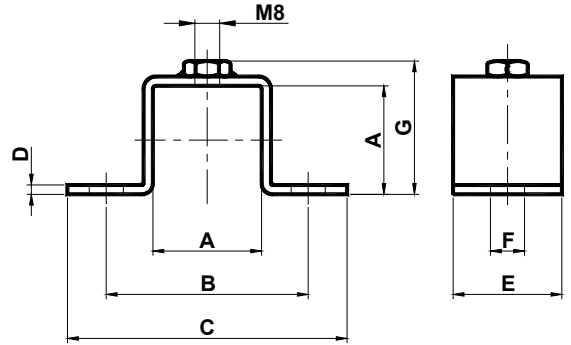
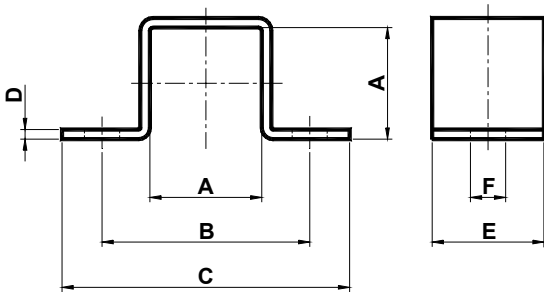
Tensioner element with single pin. The square body is made in aluminium; the pin and the cap are in galvanized steel. The bushing is in brass. The plaque is in galvanized steel. The SEB tensioner element has a preloading screw (STEI screw (N) in the sizes 1 and 2; TE screw (P) in the size 3) to make more easy the assembly operations.

* 预加负荷用螺钉 / Preloading screw

固定系统 / ANCHORAGE SYSTEMS

夹具附件 型号 F
Accessory Clamp Type F

夹具附件 型号 FD
Accessory Clamp Type FD



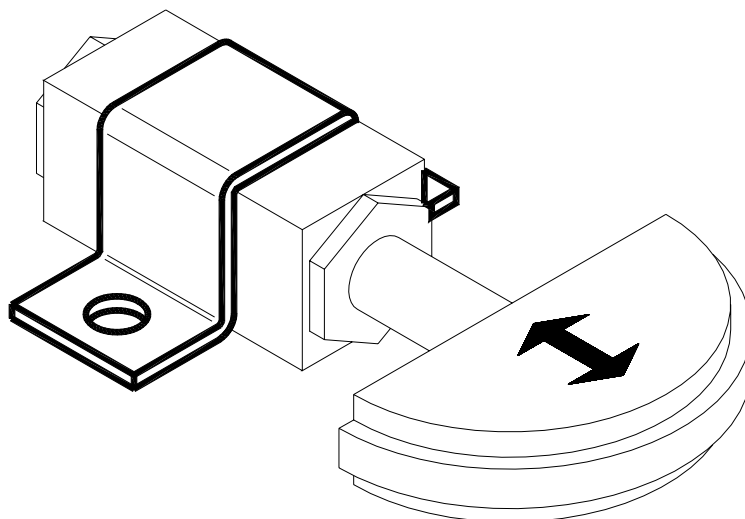
夹具为镀锌钢制。
The clamp is made in galvanized steel.

夹具为镀锌钢制。
The clamp is made in galvanized steel.



| 型号 Type | 编号 | A | B | C | D | E | F | G | 重量 Weight inkg | 型号 Type | 编号 |
|------------|----------|----|----|----|-----|----|-----|------|----------------------|------------|----------|
| F1 | AS010560 | 25 | 50 | 65 | 2 | 25 | 8.5 | 32 | 0.05 | FD1 | AS010565 |
| F2 | AS010561 | 30 | 60 | 80 | 2.5 | 30 | 11 | 37.5 | 0.08 | FD2 | AS010566 |
| F3 | AS010562 | 35 | 65 | 90 | 3 | 35 | 11 | 43 | 0.11 | FD3 | AS010567 |

固定实例 \ EXAMPLE OF ANCHORAGE

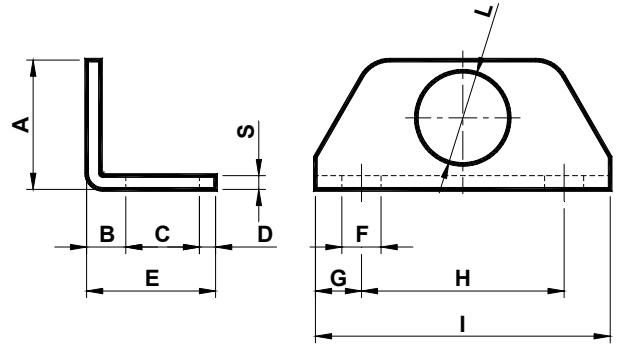


夹具附件 型号 L / Accessory Support Type L



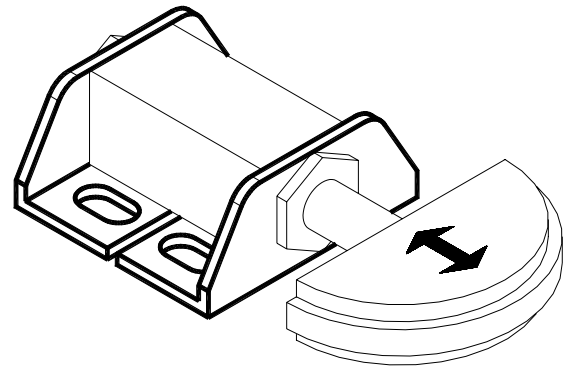
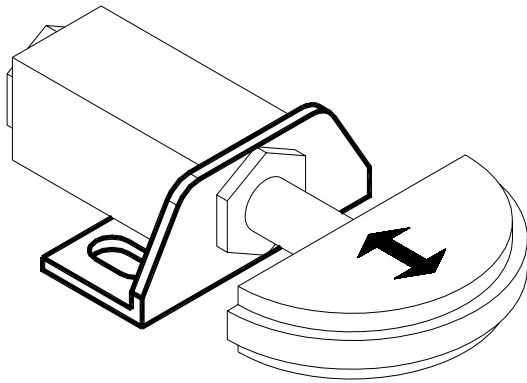
夹具为镀锌钢制。

The support is made in galvanized steel.



| 型号 Type | 编号 | A | B | C | D | E | F | G | H | I | L | S | 重量 Weight inkg |
|------------|----------|----|-----|------|-----|------|------|------|----|----|------|---|----------------------|
| L1 | AS010575 | 28 | 8.5 | 16 | 3.5 | 28 | 8.5 | 10 | 44 | 64 | 20.2 | 3 | 0.05 |
| L2 | AS010576 | 33 | 11 | 17.5 | 4.5 | 32 | 8.5 | 10 | 50 | 70 | 24.2 | 3 | 0.07 |
| L3 | AS010577 | 39 | 12 | 25 | 5.5 | 42.5 | 10.5 | 12.5 | 60 | 85 | 30.2 | 4 | 0.09 |

固定实例 \ EXAMPLE OF ANCHORAGE

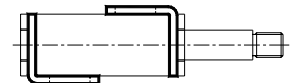
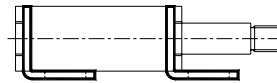
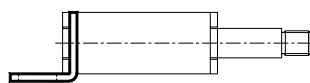
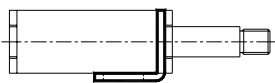


例 1

例 4

例 7

例 10

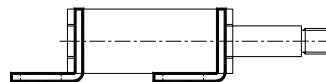
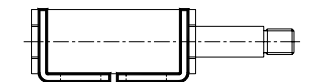
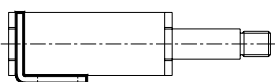


例 2

例 5

例 8

例 11

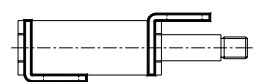
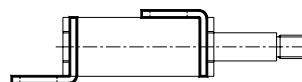
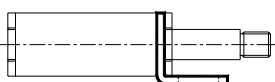


例 3

例 6

例 9

例 12



附件列表 / Accessories table

| 链条 - Chain DIN 8187 | | 型号 Type | | | | | 尺寸 Size | |
|---------------------|------------|---------------|---------------|----------------|----------------|----------------|---------|---|
| ISO | 节距 Pitch | ST | SP | STL | SPL | SCL | | |
| | | | | | | | | |
| | | 第 22 页 | 第 22 页 | 第 20 页 | 第 21 页 | 第 21 页 | | |
| 06-B1 | 3/8"x7/32" | ST 1-2 3/8" S | SP 1-2 3/8" S | STL 1-2 3/8" S | SPL 1-2 3/8" S | SCL 1-2 3/8" S | 1 | |
| 06-B1 | 3/8"x7/32" | ST 1-2 3/8" S | SP 1-2 3/8" S | STL 1-2 3/8" S | SPL 1-2 3/8" S | SCL 1-2 3/8" S | 2 | |
| 08-B1 | 1/2"x5/16" | ST 1-2 1/2" S | SP 1-2 1/2" S | STL 1-2 1/2" S | SPL 1-2 1/2" S | SCL 1-2 1/2" S | 1 | |
| 08-B1 | 1/2"x5/16" | ST 1-2 1/2" S | SP 1-2 1/2" S | STL 1-2 1/2" S | SPL 1-2 1/2" S | SCL 1-2 1/2" S | 2 | |
| 10-B1 | 5/8"x3/8" | ST 2-3 5/8" S | | | | | | 2 |
| 10-B1 | 5/8"x3/8" | ST 2-3 5/8" S | SP 3 5/8" S | STL 3 5/8" S | SPL 3 5/8" S | SCL 3 5/8" S | 3 | |
| 12-B1 | 3/4"x7/16" | ST 3 3/4" S | SP 3 3/4" S | STL 3 3/4" S | SPL 3 3/4" S | SCL 3 3/4" S | 3 | |
| 16-B1 | 1"x17.02mm | ST 3 1" S | | | | | | 3 |
| 06-B2 | 3/8"x7/32" | ST 1-2 3/8" D | SP 1-2 3/8" D | STL 1-2 3/8" D | SPL 1-2 3/8" D | SCL 1-2 3/8" D | 1 | |
| 06-B2 | 3/8"x7/32" | ST 1-2 3/8" D | SP 1-2 3/8" D | STL 1-2 3/8" D | SPL 1-2 3/8" D | SCL 1-2 3/8" D | 2 | |
| 08-B2 | 1/2"x5/16" | ST 1-2 1/2" D | SP 1-2 1/2" D | STL 1-2 1/2" D | SPL 1-2 1/2" D | SCL 1-2 1/2" D | 1 | |
| 08-B2 | 1/2"x5/16" | ST 1-2 1/2" D | SP 1-2 1/2" D | STL 1-2 1/2" D | SPL 1-2 1/2" D | SCL 1-2 1/2" D | 2 | |
| 10-B2 | 5/8"x3/8" | ST 2-3 5/8" D | | | | | | 2 |
| 10-B2 | 5/8"x3/8" | ST 2-3 5/8" D | SP 3 5/8" D | STL 3 5/8" D | SPL 3 5/8" D | SCL 3 5/8" D | 3 | |
| 12-B2 | 3/4"x7/16" | ST 3 3/4" D | SP 3 3/4" D | | | | 3 | |
| 16-B2 | 1"x17.02mm | ST 3 1" D | | | | | | 3 |

张紧装置附件 型号 STL / Accessories for chain tighteners type STL



具半圆形轮廓滑块，适用于小轴距和靠近链轮的安装。

材料：高分子密度聚乙烯。

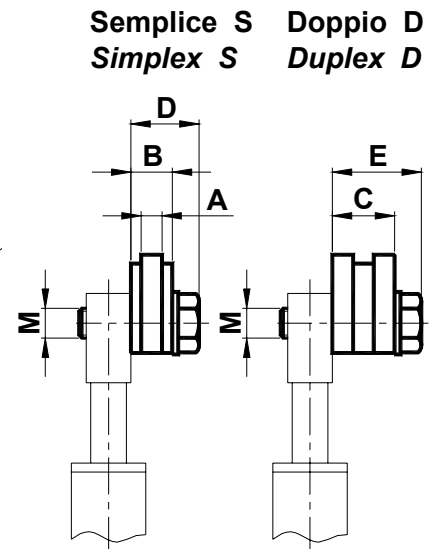
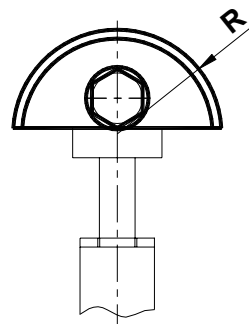
工作速度 ≤20 m/min。工作温度 ≤70°C。

Semi-circular sliding block suitable for reduced interaxis or for installation closed to the pinion.

Material: Polyethylene with high molecular density.

Operating speed ≤20 m/min.

Sliding block operating temperature ≤70°C.



| 型号 Type | 编号 S | 编号 D | A | B | C | D | E | M | R | 重量 Weight in kg | |
|-------------|----------|----------|----|------|------|------|------|-----|----|-----------------|------|
| | | | | | | | | | | S | D |
| STL1-2 3/8" | AS010660 | AS010675 | 5 | 10 | 18 | 19 | 27 | M10 | 35 | 0.07 | 0.08 |
| STL1-2 1/2" | AS010661 | AS010676 | 7 | 14 | 20.5 | 23 | 29.5 | M10 | 35 | 0.08 | 0.09 |
| STL3 5/8" | AS010664 | AS010679 | 9 | 16.5 | 25 | 25.5 | 34 | M10 | 45 | 0.10 | 0.11 |
| STL3 3/4" | AS010665 | / | 11 | 17.5 | / | 26.5 | / | M10 | 45 | 0.10 | / |

张紧装置附件 型号 SPL / Accessories for chain tighteners type SPL



具底部扩大轴承的钢制链轮。

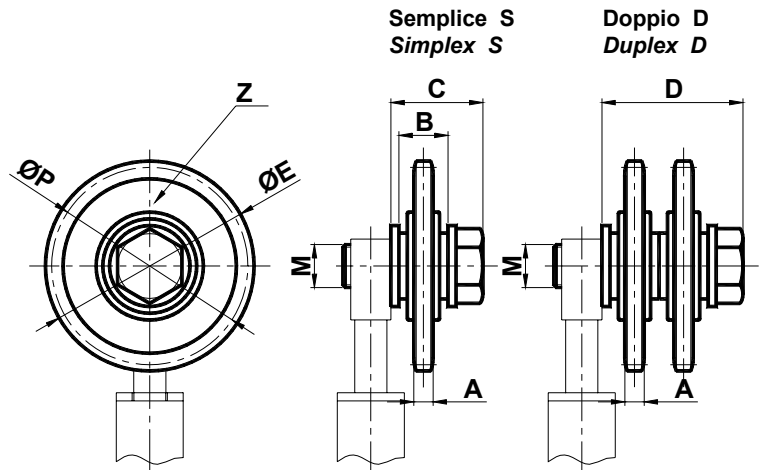
工作速度 ≤ 60 m/min。

工作温度 $\leq 100^\circ\text{C}$ 。

Steel pinion with enlarged bearing.

Operating speed ≤ 60 m/min.

Operating temperature $\leq 100^\circ\text{C}$.



| 型号 Type | 编号 S | 编号 D | A | B | C | D | ØE | M | ØP | Z | 重量 Weight in kg | |
|-------------|----------|----------|------|------|------|------|------|-----|-------|----|--------------------|------|
| | | | | | | | | | | | S | D |
| SPL1-2 3/8" | AS010690 | AS010705 | 5.3 | 18.3 | 37.3 | 55.6 | 68.0 | M16 | 63.90 | 21 | 0.2 | 0.35 |
| SPL1-2 1/2" | AS010691 | AS010706 | 7.2 | 18.3 | 37.3 | 55.6 | 77.8 | M16 | 73.14 | 18 | 0.3 | 0.55 |
| SPL3 5/8" | AS010694 | AS010709 | 9.1 | 18.3 | 42.3 | 60.6 | 93.0 | M16 | 86.39 | 17 | 0.45 | 0.8 |
| SPL3 3/4" | AS010695 | / | 11.1 | 18.3 | 42.3 | / | 99.8 | M16 | 91.63 | 15 | 0.6 | / |

张紧装置附件 型号 SCL / Accessories for chain tighteners type SCL



具标准轴承的钢制链轮。

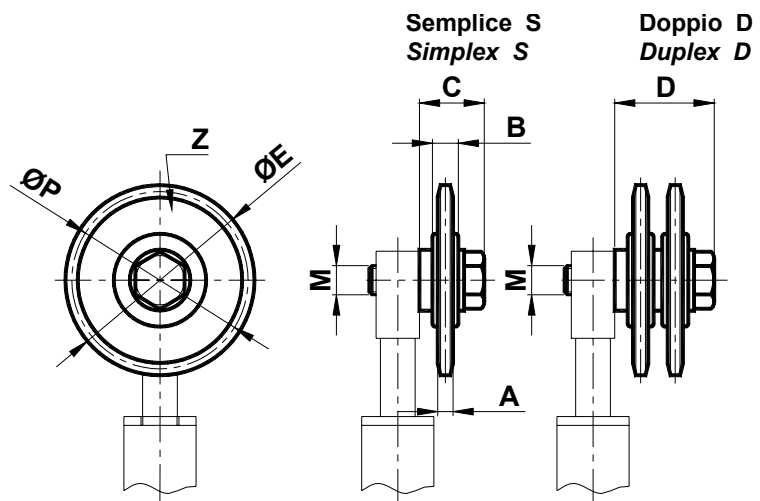
工作温度 $\leq 100^\circ\text{C}$ 。

工作速度 ≤ 60 m/min。

Steel pinion with standard bearing.

Operating temperature $\leq 100^\circ\text{C}$.

Operating speed ≤ 60 m/min.



| 型号 Type | 编号 S | 编号 D | A | B | C | D | ØE | M | ØP | Z | 重量 Weight in kg | |
|-------------|----------|----------|------|----|------|------|------|-----|-------|----|--------------------|------|
| | | | | | | | | | | | S | D |
| SCL1-2 3/8" | AS010720 | AS010735 | 5.3 | 9 | 26 | 37 | 49.3 | M10 | 45.81 | 15 | 0.10 | 0.22 |
| SCL1-2 1/2" | AS010721 | AS010736 | 7.2 | 9 | 28 | 41 | 65.5 | M10 | 61.09 | 15 | 0.19 | 0.36 |
| SCL3 5/8" | AS010724 | AS010739 | 9.1 | 12 | 34.5 | 39.5 | 83.0 | M12 | 76.36 | 15 | 0.35 | 0.58 |
| SCL3 3/4" | AS010725 | / | 11.1 | 12 | 34.5 | / | 99.8 | M12 | 91.63 | 15 | 0.55 | / |

张紧装置附件 型号 ST / Accessories for chain tighteners type ST



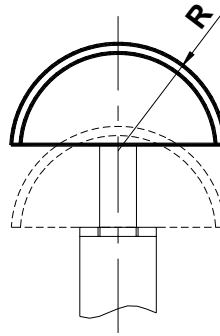
具半圆形轮廓滑块，适用于小轴距和靠近链轮的安装。

材料：高分子密度聚乙烯。

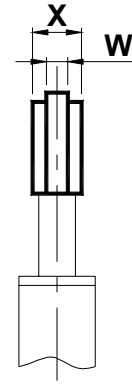
工作速度 ≤ 20 m/min。

工作温度 $\leq 70^\circ\text{C}$ 。

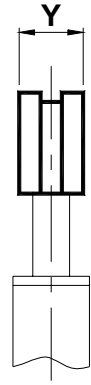
Semi-circular sliding block suitable for reduced interaxis or for installation closed to the pinion.
 Material: Polyethylene with high molecular density.
 Operating speed ≤ 20 m/min.
 Sliding block operating temperature $\leq 70^\circ\text{C}$.



Semplice S
Simplex S



Doppio D
Duplex D



| 型号 Type | 编号 S | 编号 D | R | W | X | Y | 重量 Weight in kg | |
|------------|----------|----------|----|----|----|------|--------------------|------|
| | | | | | | | S | D |
| ST1-2 3/8" | AS010585 | AS010600 | 35 | 5 | 16 | 18 | 0.03 | 0.03 |
| ST1-2 1/2" | AS010586 | AS010601 | 35 | 7 | 16 | 20.5 | 0.03 | 0.03 |
| ST2-3 5/8" | AS010588 | AS010603 | 45 | 9 | 17 | 25 | 0.04 | 0.08 |
| ST3 3/4" | AS010590 | AS010605 | 45 | 11 | 17 | 30 | 0.05 | 0.09 |
| ST3 1" | AS010591 | AS010606 | 55 | 16 | 18 | 47 | 0.08 | 0.20 |

张紧装置附件 型号 SP / Accessories for chain tighteners type SP



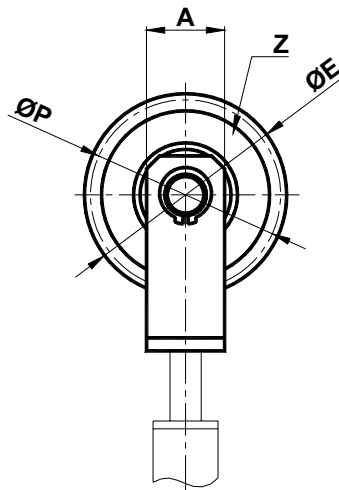
头部由一个安装在支架上的空转链轮组成。

具底部扩大轴承的钢制链轮。

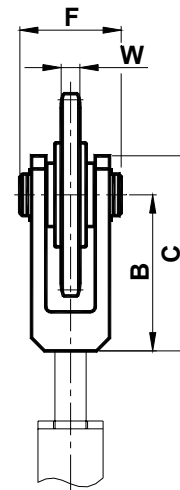
工作速度 ≤ 60 m/min。

工作温度 $\leq 100^\circ\text{C}$ 。

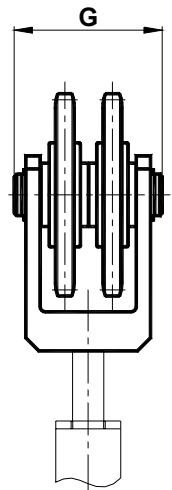
The head is composed by a idle pignon, installed on a fork.
 Steel pinion with enlarged bearing.
 Operating speed ≤ 60 m/min.
 Operating temperature $\leq 100^\circ\text{C}$.



Semplice S
Simplex S

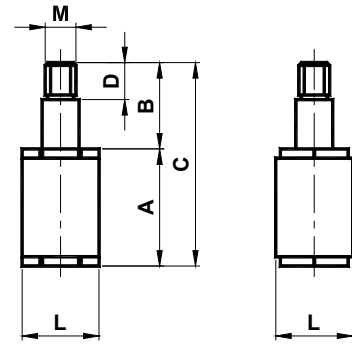


Doppio D
Duplex D



| 型号 Type | 编号 S | 编号 D | A | B | C | ØE | F | G | W | ØP | Z | 重量 Weight in kg | |
|------------|----------|----------|----|----|----|------|----|----|------|-------|----|--------------------|------|
| | | | | | | | | | | | | S | D |
| SP1-2 3/8" | AS010630 | AS010645 | 30 | 60 | 75 | 68.0 | 40 | 60 | 5.3 | 63.90 | 21 | 0.29 | 0.52 |
| SP1-2 1/2" | AS010631 | AS010646 | 30 | 60 | 75 | 77.8 | 40 | 60 | 7.2 | 73.14 | 18 | 0.36 | 0.65 |
| SP3 5/8" | AS010634 | AS010649 | 30 | 70 | 85 | 93.0 | 45 | 65 | 9.1 | 86.39 | 17 | 0.51 | 0.96 |
| SP3 3/4" | AS010635 | AS010650 | 30 | 70 | 85 | 99.8 | 45 | 65 | 11.1 | 91.63 | 15 | 0.57 | 1.14 |

Asso 小型张紧装置 型号 **MB** / Mini Tensioner type **MB**

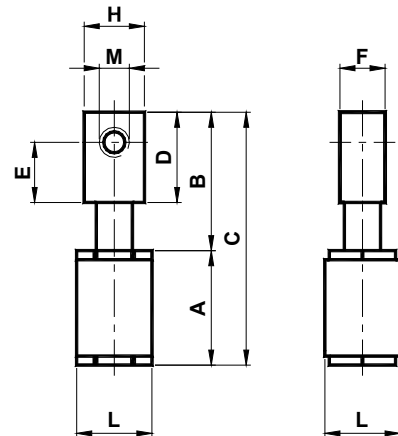


具单柱小型张紧装置组件。方形主体为铝制；方柱和帽为镀锌钢制。轴衬为黄铜制。

Mini tensioner element with single pin. The square body is made in aluminium; the pin and the cap are in galvanized steel. The bushing is in brass.

| 型号 Type | 编号 | A | B | C | D | L | M | Newton | 重量 Weight in kg |
|------------|----------|----|----|----|----|----|-----|--------|-----------------------|
| MB1 | AS010550 | 38 | 28 | 66 | 12 | 25 | M10 | 0-140 | 0.12 |

Asso 小型张紧装置 型号 **ME** / Mini Tensioner type: **ME**



具单柱小型张紧装置组件。方形主体为铝制；方柱和帽为镀锌钢制。轴衬为黄铜制。薄板为镀锌钢制。

Mini tensioner element with single pin. The square body is made in aluminium; the pin and the cap are in galvanized steel. The bushing is in brass. The plaque is in galvanized steel.

| 型号 Type | 编号 | A | B | C | D | E | F | H | L | M | Newton | 重量 Weight in kg |
|------------|----------|----|----|----|----|----|----|----|----|-----|--------|-----------------------|
| ME1-8 | AS010555 | 38 | 46 | 84 | 30 | 20 | 15 | 20 | 25 | M 8 | 0-140 | 0.20 |
| ME1-10 | AS010556 | 38 | 46 | 84 | 30 | 20 | 15 | 20 | 25 | M10 | 0-140 | 0.18 |
| ME1-16 | AS010557 | 38 | 46 | 84 | 30 | 20 | 15 | 30 | 25 | M16 | 0-140 | 0.23 |

链条张紧装置附件 型号 ST / Accessories for chain tighteners type ST



具半圆形轮廓滑块，适用于小轴距和靠近链轮的安装。

材料：高分子密度聚乙烯。

工作速度 ≤ 20 m/min。

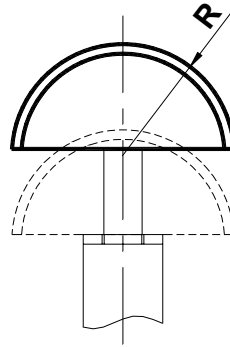
工作温度 $\leq 70^\circ\text{C}$ 。

Semi-circular sliding block suitable for reduced interaxis or for installation closed to the pinion.

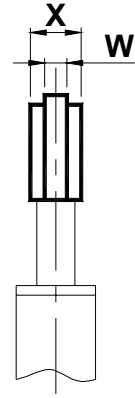
Material: Polyethylene with high molecular density.

Operating speed ≤ 20 m/min.

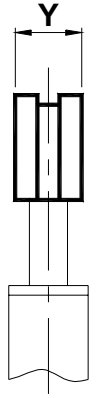
Operating temperature $\leq 70^\circ\text{C}$.



Semplice S
Simplex S



Doppio D
Duplex D



| 型号 Type | 编号 S | 编号 D | R | W | X | Y | 重量 Weight in kg | |
|------------|----------|----------|----|-----|----|----|--------------------|------|
| | | | | | | | S | D |
| ST1 8mm | AS010584 | AS010599 | 35 | 2.5 | 16 | 16 | 0.03 | 0.03 |
| ST1-2 3/8" | AS010585 | AS010600 | 35 | 5 | 16 | 18 | 0.03 | 0.03 |
| ST1-2 1/2" | AS010586 | / | 35 | 7 | 16 | / | 0.03 | 0.03 |

张紧装置附件 型号 STT / Accessories for chain tighteners type STT



具半圆形轮廓滑块，适用于小轴距和靠近链轮的安装。

材料：高分子密度聚乙烯。

工作速度 ≤ 20 m/min。

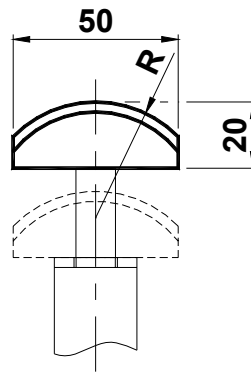
工作温度 $\leq 70^\circ\text{C}$ 。

Semi-circular sliding block suitable for reduced interaxis or for installation closed to the pinion.

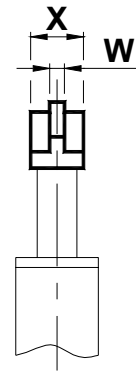
Material: Polyethylene with high molecular density.

Operating speed ≤ 20 m/min.

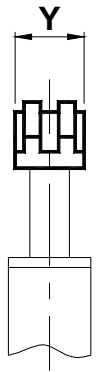
Operating temperature $\leq 70^\circ\text{C}$.



Semplice S
Simplex S



Doppio D
Duplex D



| 型号 Type | 编号 S | 编号 D | R | W | X | Y | 重量 Weight in kg | |
|------------|----------|----------|----|-----|----|----|--------------------|------|
| | | | | | | | S | D |
| STT 1 8mm | AS010750 | AS010755 | 35 | 2.5 | 16 | 16 | 0.03 | 0.03 |
| STT 1 3/8" | AS010751 | AS010756 | 35 | 5 | 16 | 18 | 0.03 | 0.03 |
| STT 1 1/2" | AS010752 | / | 35 | 7 | 16 | / | 0.03 | 0.03 |

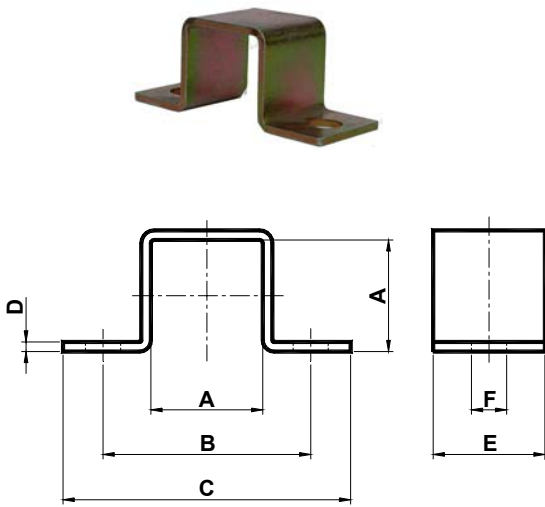
固定系统 / ANCHORAGE SYSTEMS

夹具附件 型号 F

Accessory Clamp Type F

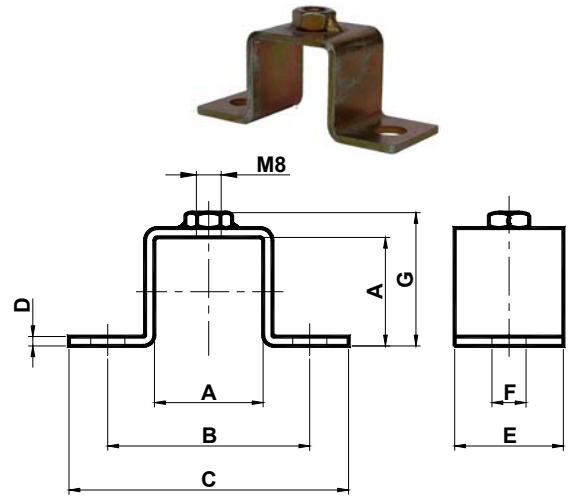
夹具附件 型号 FD

Accessory Clamp Type FD



夹具为镀锌钢制。

The clamp is made in galvanized steel.



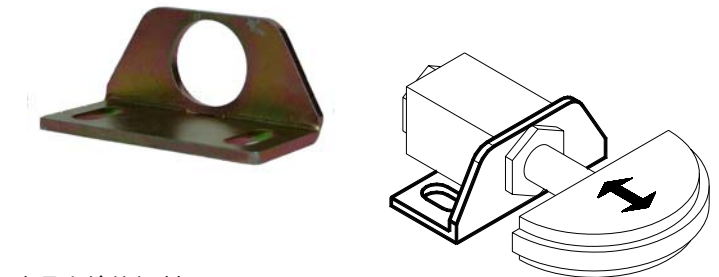
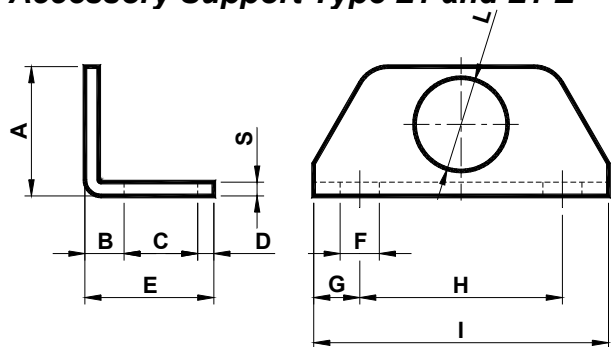
夹具为镀锌钢制。

The clamp is made in galvanized steel.

| 型号 Type | 编号 | A | B | C | D | E | F | G | 重量 Weight in kg | 型号 Type | 编号 |
|------------|----------|----|----|----|---|----|-----|----|-----------------------|------------|----------|
| F1 | AS010560 | 25 | 50 | 65 | 2 | 25 | 8.5 | 32 | 0.05 | FD1 | AS010565 |

夹具附件 型号 L1 e L1 E

Accessory Support Type L1 and L1 E

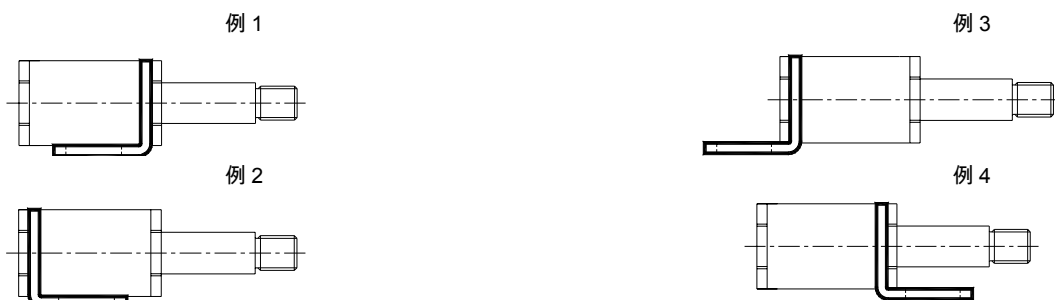


夹具为镀锌钢制。

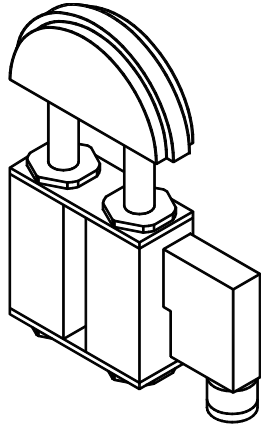
The support is made in galvanized steel.

| 型号 Type | 编号 | A | B | C | D | E | F | G | H | I | L | S | 重量 Weight in kg |
|------------|----------|----|-----|----|-----|----|-----|----|----|----|------|---|-----------------------|
| L1 | AS010575 | 28 | 8.5 | 16 | 3.5 | 28 | 8.5 | 10 | 44 | 64 | 20.2 | 3 | 0.05 |
| L1 E | AS010578 | 28 | 8.5 | 16 | 3.5 | 28 | 6.5 | 6 | 38 | 50 | 20.2 | 2 | 0.04 |

固定实例 / EXAMPLE OF ANCHORAGE

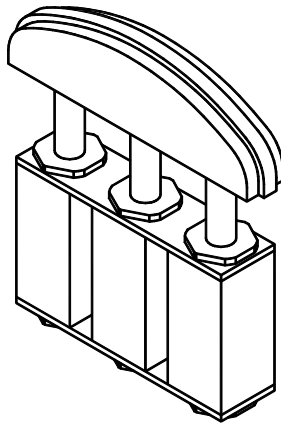


特殊操作方式 / Special Executions



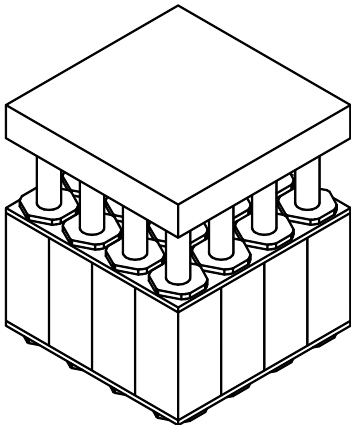
链条和皮带张紧装置组件，配有电子限位开关。每个 **Asso** 弹性组件均可配备一项电子监控系统。

*Chain and belt tightener elastic element with travel-end switch. Every **Asso** elastic element can be equipped with an electrical control-system.*



根据需求的特殊模块式操作方式。**Asso** 为可组合的组件，可根据客户的需求构成特殊的组合。

*Special modular executions on request. **Asso** is a fitted element, which allows us to carry out particular groups according to the specific requests of the customer.*

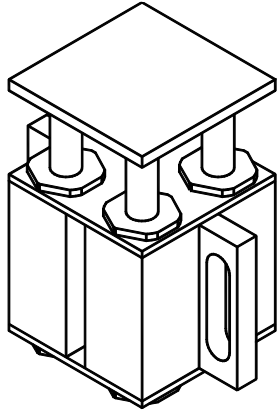


Asso 可组合组件极为灵活，可成组，用于制造支撑、悬挂装置、抗震系统、减震岛等。

*The **Asso** fitted elements are so versatile that they can be grouped into batteries for the realization of supports, suspensions, anti-vibrating system, shock absorbing islands, etc....*

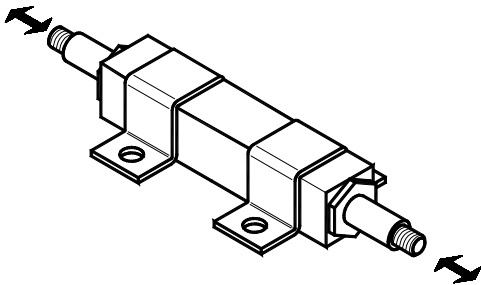


特殊操作方式 / Special Executions



使用 **Asso** 基础组件可建造弹性平台，将其根据特殊的需求，使用夹具或薄板固定。

*Using the basic components of **Asso** we are able to execute elastic tables, which are fixed through supports or plates. These parts are carried out according to specific requests.*

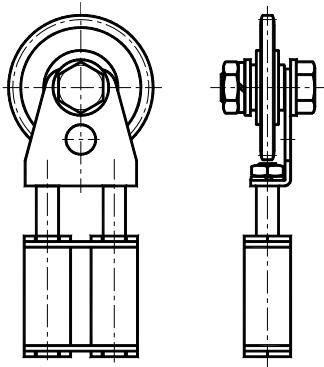


使用 **Asso** 组件可制造具双柱的双组张紧装置组件，双柱在同一弹簧上受力。

*Using the **ASSO** components, You can realize double tensioner elements with two pins, that acted on the same spring.*

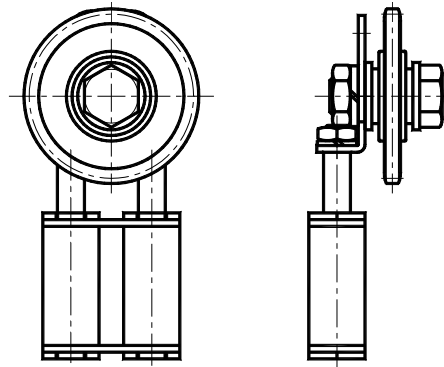
链轮安装实例 (参照 ASSO 型号 AD-ADB 第 9 页)

Examples of sprocket installation (With reference to ASSO Type AD-ADB page 9)



夹具内部链轮
Internal sprocket to the support

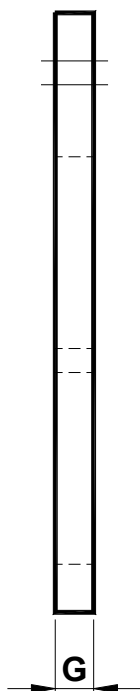
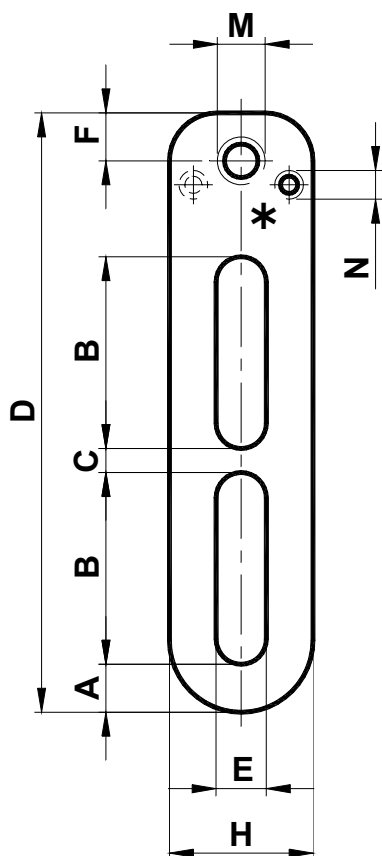
图 1



夹具外部链轮
External sprocket to the support

图 2

固定张紧装置 型号 AH / Fix Tensioner type AH



固定张紧装置用基础组件 型号 AH。材料：镀锌钢。
螺钉用于避免聚乙烯材质头部的扭转。

Basic element for fix tensioner type AH. Material: Galvanized steel.

* Screw suitable to avoid the rotation of the head made of polyethylene.

| 型号 Type | 编号 | A | B | C | D | E | F | G | H | M | N | 重量 Weight in kg |
|------------|----------|----|----|---|-----|------|----|----|----|-----|----|-----------------------|
| AH1-8 | AS010760 | 10 | 40 | 5 | 125 | 10.5 | 10 | 8 | 30 | M 8 | M6 | 0.20 |
| AH1-10 | AS010761 | 10 | 40 | 5 | 125 | 10.5 | 10 | 8 | 30 | M10 | M6 | 0.20 |
| AH1-12 | AS010762 | 10 | 40 | 5 | 125 | 10.5 | 10 | 8 | 30 | M12 | M6 | 0.20 |
| AH2-10 | AS010763 | 12 | 45 | 5 | 150 | 12.5 | 17 | 10 | 35 | M10 | M8 | 0.40 |
| AH2-12 | AS010764 | 12 | 45 | 5 | 150 | 12.5 | 10 | 10 | 35 | M12 | M8 | 0.40 |
| AH2-16 | AS010765 | 12 | 45 | 5 | 150 | 12.5 | 17 | 10 | 35 | M16 | M8 | 0.40 |

张紧装置附件 型号 TH / Accessories for chain tighteners type TH



具半圆形轮廓滑块，适用于小轴距和靠近链轮的安装。

材料：高分子密度聚乙烯。

工作速度 ≤ 20 m/min。

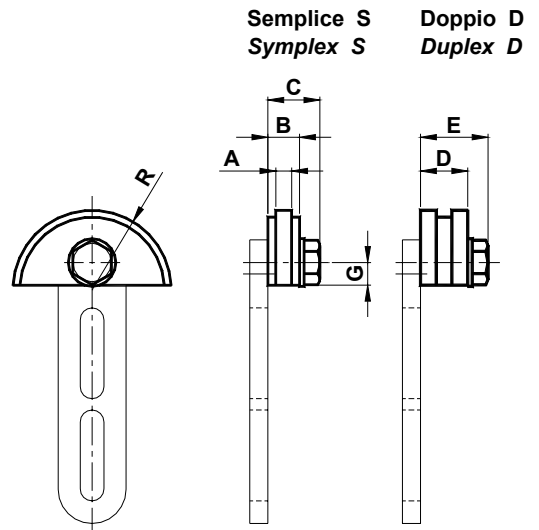
工作温度 $\leq 70^{\circ}\text{C}$ 。

Semi-circular sliding block suitable for reduced interaxis or for installation closed to the pinion.

Material: Polyethylene with high molecular density.

Operating speed ≤ 20 m/min.

Operating temperature $\leq 70^{\circ}\text{C}$.



| 型号 Type | 编号 S | 编号 D | A | B | C | D | E | G | R | 张紧组件 Tension Elements | 重量 Weight in kg | |
|------------|----------|----------|----|------|------|------|------|----|----|--------------------------|-----------------|------|
| | | | | | | | | | | | S | D |
| TH1-3/8" | AS010770 | AS010780 | 5 | 10 | 19 | 18 | 27 | 10 | 35 | 1-10 | 0.07 | 0.08 |
| TH1-1/2" | AS010771 | AS010781 | 7 | 14 | 23 | 20.5 | 29.5 | 10 | 35 | 1-10 | 0.08 | 0.09 |
| TH2-5/8" | AS010772 | AS010782 | 9 | 16.5 | 25.5 | 25 | 34 | 12 | 45 | 2-10 | 0.10 | 0.11 |
| TH2-3/4" | AS010773 | AS010783 | 11 | 17.5 | 26.5 | 30 | 39 | 12 | 45 | 2-10 | 0.11 | 0.12 |
| TH2-1" | AS010774 | AS010784 | 16 | 18 | 28.5 | 47 | 57.5 | 20 | 55 | 2-12 | 0.18 | 0.26 |
| TH2-1" 1/4 | AS010775 | AS010785 | 18 | 20 | 30.5 | 54 | 64.5 | 20 | 55 | 2-12 | 0.32 | 0.50 |
| TH2-1" 1/2 | AS010776 | AS010786 | 24 | 24 | 34.5 | 72 | 82.5 | 20 | 55 | 2-12 | 0.33 | 0.54 |

皮带拉紧装置附件 / Accessories for belt-tighteners

聚酰胺制滚轮 DPH
Rollerset of polyamid DPH

* 具螺钉 M / With M screw



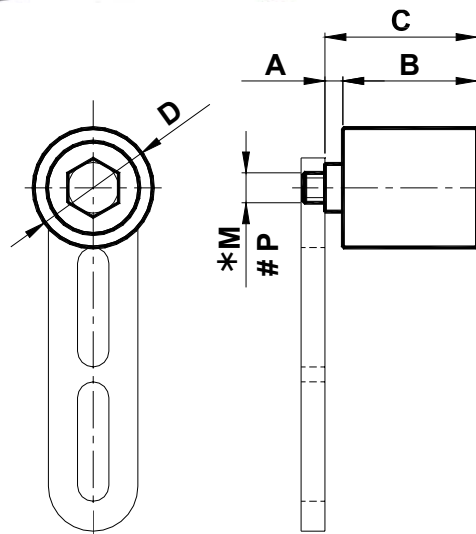
镀锌钢制滚轮 DAH
Rollerset of galvanized steel DAH

具螺钉 P / With P screw

塑性材料制 DPH 滚轮，在润滑轴承上安装。

工作温度 $\leq 70^{\circ}\text{C}$ 。

The DPH roller is in plastic material and it is installed on greased bearings. Operating temperature $\leq 70^{\circ}\text{C}$.



镀锌钢制 DAH 滚轮，在润滑轴承上安装。

工作温度 $\leq 100^{\circ}\text{C}$ 。

The DAH roller is in galvanized steel and it is installed on greased bearings. Operating temperature $\leq 100^{\circ}\text{C}$.

| 型号 Type | 编号 | 重量 Weight in kg | A | B | C | D | M | P | 张紧组件 Tension Elements | 型号 Type | 编号 | 重量 Weight in kg |
|------------|----------|--------------------|---|---|---|---|---|---|--------------------------|------------|----|--------------------|
| | | | | | | | | | | | | |
| DAH40 | AS010801 | 0.32 | | | | | | | | | | |
| DAH60 | AS010802 | 0.80 | | | | | | | | | | |

张紧装置附件 型号 PH / Accessories for chain tighteners type PH



具底部扩大轴承的钢制链轮。

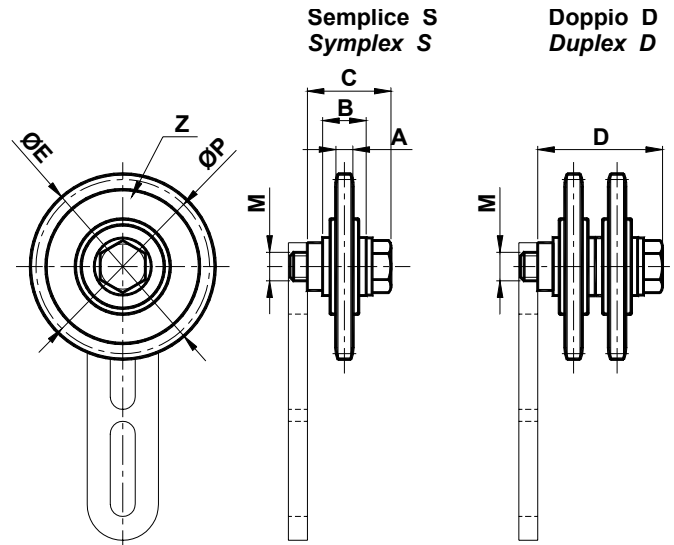
工作速度 ≤ 60 m/min。

工作温度 $\leq 100^\circ\text{C}$ 。

The pinion is made of steel with enlarged bearing.

Operating speed ≤ 60 m/min.

Operating temperature $\leq 100^\circ\text{C}$ 。



| 型号 Type | 编号 S | 编号 D | A | B | C | D | ØE | M | ØP | Z | 张紧组件 Tension Elements | 重量 Weight in kg | |
|------------|----------|----------|------|------|------|------|-------|-----|-------|----|--------------------------|--------------------|------|
| | | | | | | | | | | | | S | D |
| PH1-3/8" | AS010815 | AS010825 | 5.3 | 18.3 | 35.3 | 53.6 | 68.0 | M10 | 63.90 | 21 | 1-10 | 0.25 | 0.40 |
| PH1-1/2" | AS010816 | AS010826 | 7.2 | 18.3 | 35.3 | 53.6 | 77.8 | M10 | 73.14 | 18 | 1-10 | 0.35 | 0.60 |
| PH2-5/8" | AS010817 | AS010827 | 9.1 | 18.3 | 38.8 | 57.1 | 93.0 | M12 | 86.39 | 17 | 2-12 | 0.50 | 0.88 |
| PH2-3/4" | AS010818 | AS010828 | 11.1 | 18.3 | 38.8 | 57.1 | 99.8 | M12 | 91.63 | 15 | 2-12 | 0.65 | 1.15 |
| PH2-1" | AS010819 | AS010829 | 16.2 | 17.7 | 43.7 | 75.4 | 109.0 | M16 | 98.14 | 12 | 2-16 | 0.80 | 1.50 |

张紧装置附件 型号 CH / Accessories for chain tighteners type CH



具标准轴承的钢制链轮。

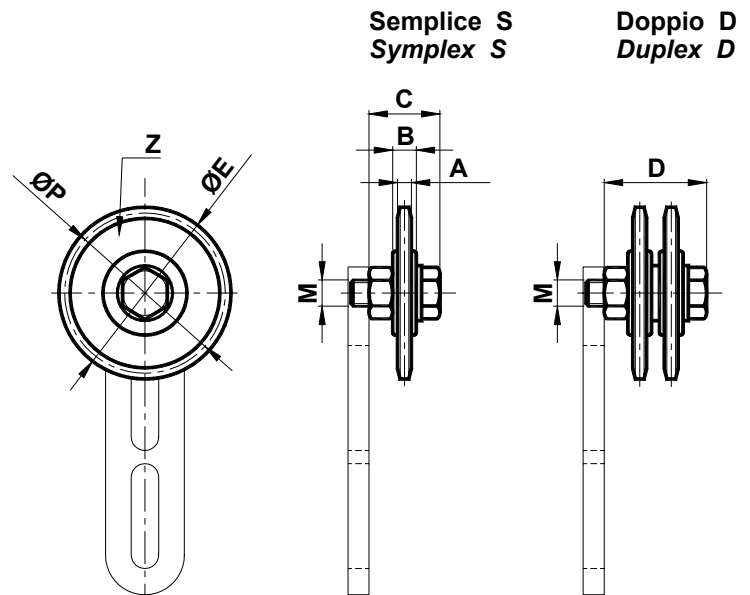
工作温度 $\leq 100^\circ\text{C}$ 。

工作速度 ≤ 60 m/min。

The pinion is made of steel with standard bearing.

Operating temperature $\leq 100^\circ\text{C}$ 。

Operating speed ≤ 60 m/min.



| 型号 Type | 编号 S | 编号 D | A | B | C | D | ØE | M | ØP | Z | 张紧组件 Tension Elements | 重量 Weight in kg | |
|------------|----------|----------|-----|----|------|------|-------|-----|--------|----|--------------------------|--------------------|------|
| | | | | | | | | | | | | S | D |
| CH1-3/8" | AS010835 | AS010845 | 5.3 | 9 | 28 | 39 | 49.3 | M10 | 45.81 | 15 | 1-10 | 0.10 | 0.22 |
| CH1-1/2" | AS010836 | AS010846 | 7.2 | 9 | 28 | 41 | 65.5 | M10 | 61.09 | 15 | 1-10 | 0.19 | 0.36 |
| CH2-5/8" | AS010837 | AS010847 | 9.1 | 12 | 34.5 | 51.5 | 83.0 | M12 | 76.36 | 15 | 2-12 | 0.35 | 0.58 |
| CH2-3/4" | AS010838 | AS010848 | 11. | 12 | 34.5 | 54 | 99.8 | M12 | 91.63 | 15 | 2-12 | 0.55 | 0.98 |
| CH2-1" | AS010839 | AS010849 | 16. | 15 | 38 | 70 | 117.0 | M16 | 106.12 | 13 | 2-16 | 1.00 | 1.58 |

应用实例 / Examples of application

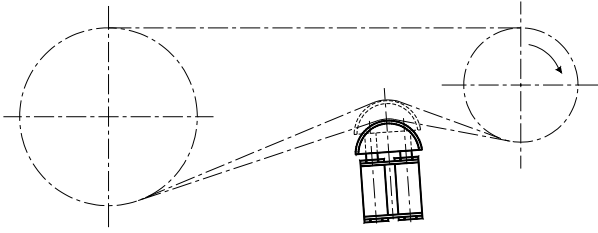


图 1

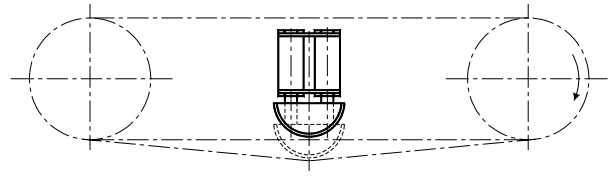


图 2

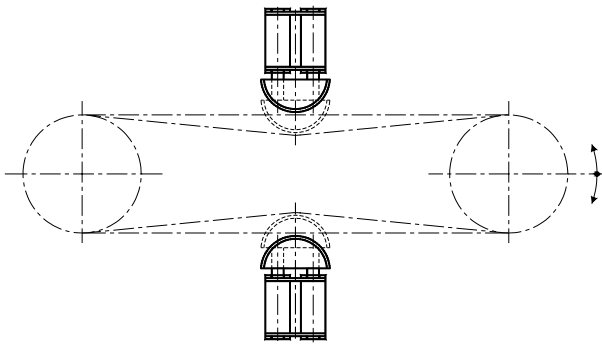


图 3

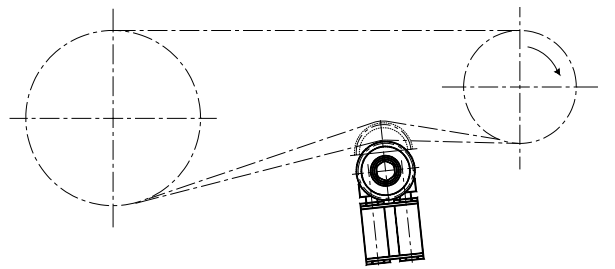


图 4

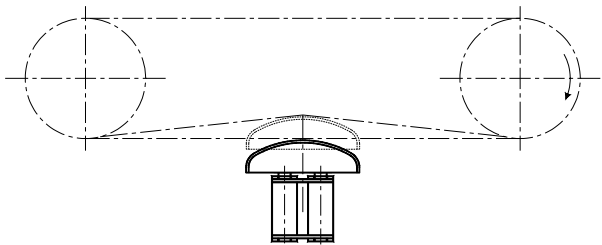


图 5

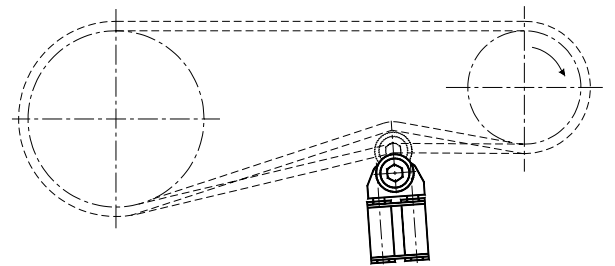


图 6

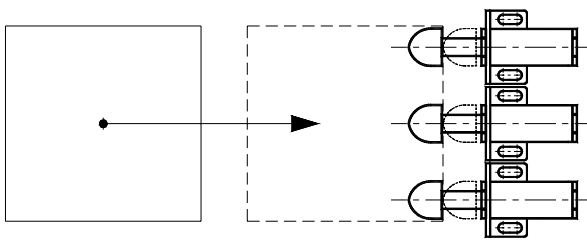


图 7

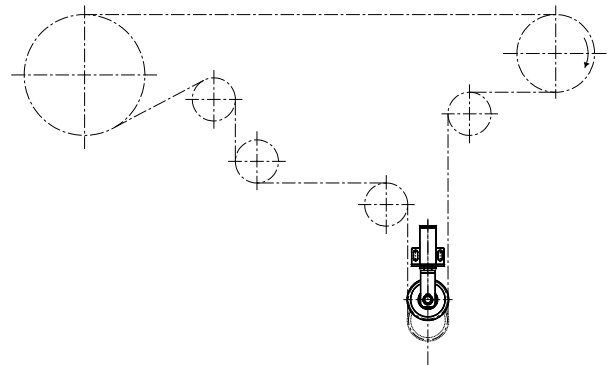


图 8

一般销售条件：

- 1) **订货** – 标准材料或特殊材料的订货应始终根据TECNIDEA CIDUE S.r.l. 公司的报价作出。所有的订货对客户都是有约束力的。加工生产一旦开始，便不可接受取消订货或减少订货，除非客户一方赔偿直至中止时刻所使用的材料和加工费用。无论如何，这些费用将由 TECNIDEA CIDUE S.r.l.公司决定。
- 2) **价格** – 意指在订货日期有效的价格。所有的价格均为维罗纳交货价计价，包装费除外。如果在供应工程中出现材料费或其他生产费用的增长情况，TECNIDEA CIDUE S.r.l.公司有权根据相应的增长修正价格，这一点也包括已在进行过程中的订货。
- 3) **交货期限** – 唯有TECNIDEA CIDUE S.r.l.公司所指定的交货期限为有效期限。无论如何，此期限只是具有说明意义的。若存在材料供应困难和罢工的情况，或者在任何不可抗力力的情况下，交货期限将自动延期，TECNIDEA CIDUE S.r.l.公司没有义务赔偿任何可能的相关损失。材料准备完毕，客户在任何情况下有义务提取所订的材料。
- 4) **运输** – 运输费由订货方负担，即使是到岸计价，风险和危险也由其承担。就可能发生的短装货投诉应在接收货物后8天内提出。如果经商议，运输费由TECNIDEA CIDUE S.r.l.公司负担，或者仅是部分负担，公司保留可选择最经济的运输方式的权利。
- 5) **包装** – 包装费在费用价格中计算。
- 6) **退货** – 如果未经事先批准或有包装费，不接受具任何理由的退货，可能存在的海关手续费及退货完全由买方负担。仓库存放或管理费用用保证金的将以退货价值的15%计算并通过欠款通知账单的方式而发放。
- 7) **质量保证** – TECNIDEA CIDUE S.r.l.公司将致力于免费修理或更换由其认定有缺陷的部件。有争议的货物应交还 TECNIDEA CIDUE S.r.l.公司所在地，所有费用均免。在将有缺陷的部件修理或拆开复原后，保质期到期。由买方对有缺陷的部件进行的修理仅在 TECNIDEA CIDUE S.r.l. 公司批准并同意费用预定价的情况下得到承认。
TECNIDEA CIDUE S.r.l.公司对在用户使用其产品，包括有缺陷产品的过程中所造成的损害不负任何责任，也不偿付任何相关的赔款。
- 8) **责任** - TECNIDEA CIDUE S.r.l.公司对在用户使用其产品，包括由缺陷产品的过程中所造成的损害不负任何责任，也不偿付任何相关的赔款。TECNIDEA CIDUE S.r.l.公司按照从属客户提出的特殊细节制造产品，但是对此产品是否由专利保护不负任何责任。
- 9) **付款** – 只有在所商议的方式和期限内所做的付款被认为有效。在付款期过后，TECNIDEA CIDUE S.r.l.公司有权要求付款，并将以超过法定税率以上3%的税率计算罚款利息。在订货方延迟付款或不付款的情况下，TECNIDEA CIDUE S.r.l.公司有权中断在进行过程中的订货的送交或者提出提前付款的要求，无需向订货方保证任何的赔款或赔偿。在生产过程中或材料已由订货方拥有，对材料提出的任何争议不解除订货方在确定期限内付款的义务，应付全部款项并不可要求任何的折扣。
- 10) **财产** – 在就发票额完全支付款项之前，一切寄出的货物仍为TECNIDEA CIDUE S.r.l.公司的财产。
- 11) **主管法院** – 与TECNIDEA CIDUE S.r.l.商业关系相联的任何争议将为维罗纳法院的权限。

N.B. Fa fede la versione in Italiano o Inglese.

注：所有的文件以意大利文或英文版为准。



Tecnidea Cidue srl 敬告这些数据不是绝对严格，公司有权不经过事先通知，根据为改善产品质量的适当的需求而进行变更。

Customers are advised that the data given here may change. Tecnidea Cidue srl reserves the right to alter the nature of its product to suit new requirements and improve quality without forewarning clients.



TECNIDEA CIDUE S.r.l.
Via Apollo XI, 12 (trav. Via Cavrara)
37057 S. Giovanni Lupatoto - Verona - Italy
tel. 0039 (0)45 8750250 - fax 0039 (0)45 8750288
www.tecnideacidue.com
e-mail: sales@tecnideacidue.com

as ideas ideas ideas ideas

Tecnidea Cidue Worldwide

Austria - Belgium - Bulgaria - Czech republic - Denmark
Finland - France - Germany - Greece - Hungary
Ireland - Italy - Latvia - Lithuania - Malta - Netherlands
Norway - Poland - Portugal - Romania - Slovakia
Slovenia - Spain - Sweden - Switzerland - Ukraine
United Kingdom - Argentina - Australia - Brasil
Canada - China - Chile - India - Indonesia - Iran - Israel
Japan - Jordan - South Korea - Mexico - New Zeeland
Peru - Philippines - Russia - Singapore - Taiwan
Thailand - Tunisia - Turkey - U.S.A.

