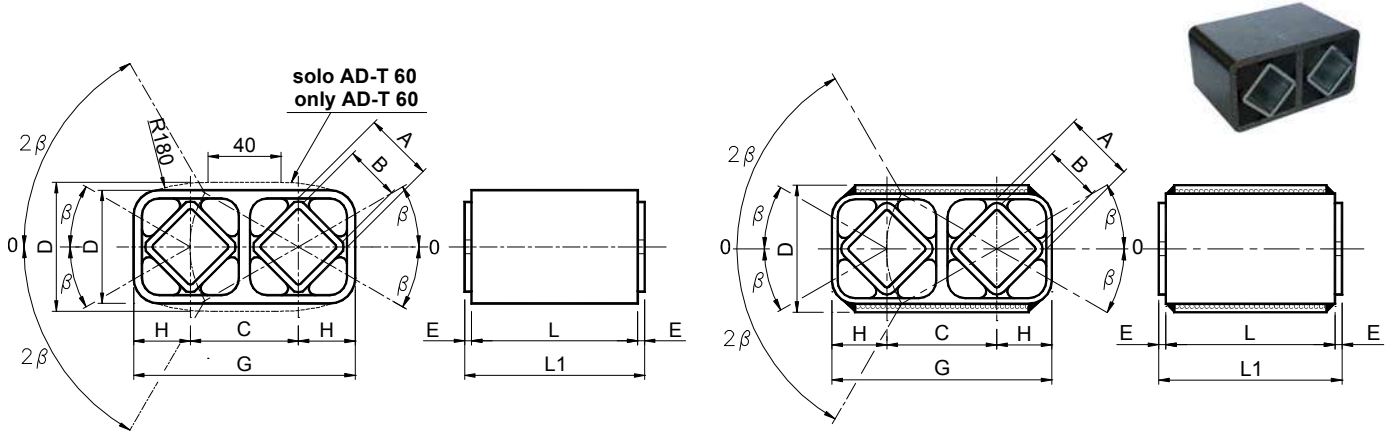


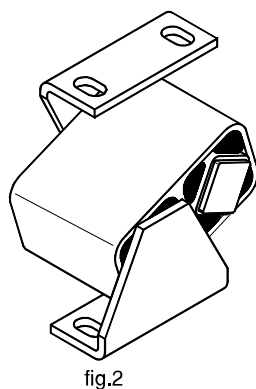
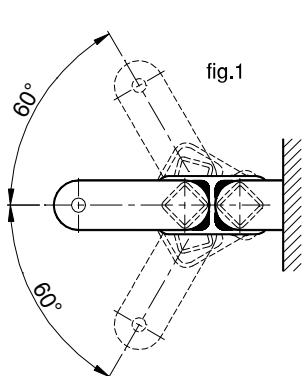
VIB 弹性组件 型号: AD-T / Elastic Components VIB Type: AD-T



尺寸 20, 30, 40, 50 和 60 / SIZES 20, 30, 40, 50 and 60

尺寸 70 / SIZE 70

型号 Type	编号 N°	A	B <sup>+0.25</sup> <sub>+0</sub>	C	D	E	G	H	L	L1 <sup>+0.0</sup> <sub>-0.3</sub>	在不同角度 * β 的扭矩 Q 以 Nm 表示 Torque Q in Nm at * β						重量 Weight in kg
											5°	10°	15°	20°	25°	30°	
AD-T 20 x 25	RE020265	15	11	25.5	28±0.15	2.5	53.5 ±0.20	13.5	25	30	0.7	1.6	2.5	3.8	5.4	7.8	0.11
AD-T 20 x 40	RE020266	15	11	25.5	28±0.15	2.5	53.5 ±0.20	13.5	40	45	1.1	2.5	4.0	6.1	8.7	12.5	0.15
AD-T 20 x 60	RE020267	15	11	25.5	28±0.15	2.5	53.5 ±0.20	13.5	60	65	1.6	3.8	6.0	9.2	13.0	18.8	0.22
AD-T 30 x 30	RE020270	18	12	31	34±0.15	2.5	65 <sup>+0.20</sup> <sub>+0.00</sub>	16	30	35	1.8	4.2	7.0	10.5	14.3	19.5	0.18
AD-T 30 x 50	RE020271	18	12	31	34±0.15	2.5	65 <sup>+0.20</sup> <sub>+0.00</sub>	16	50	55	3.0	7.0	11.7	17.5	23.8	32.5	0.31
AD-T 30 x 80	RE020272	18	12	31	34±0.15	2.5	65 <sup>+0.20</sup> <sub>+0.00</sub>	16	80	85	4.8	11.2	18.9	28.0	38.2	52.0	0.47
AD-T 40 x 40	RE020275	27	22	44	47±0.15	2.5	91 <sup>+0.20</sup> <sub>+0.00</sub>	22.5	40	45	4.7	10.2	16.5	25.6	37.6	54.2	0.37
AD-T 40 x 60	RE020276	27	22	44	47±0.15	2.5	91 <sup>+0.20</sup> <sub>+0.00</sub>	22.5	60	65	6.8	15.3	24.8	38.4	56.4	81.3	0.54
AD-T 40 x 100	RE020277	27	22	44	47±0.15	2.5	91 <sup>+0.20</sup> <sub>+0.00</sub>	22.5	100	105	11.8	25.5	41.2	64.0	94.0	135.5	0.89
AD-T 50 x 60	RE020280	38	30	60	63±0.20	5	123 <sup>+0.30</sup> <sub>+0.00</sub>	30	60	70	12.4	29.0	48.2	74.0	107.5	153.5	1.07
AD-T 50 x 80	RE020281	38	30	60	63±0.20	5	123 <sup>+0.30</sup> <sub>+0.00</sub>	30	80	90	16.5	38.7	64.3	98.7	143.4	204.7	1.39
AD-T 50 x 120	RE020282	38	30	60	63±0.20	5	123 <sup>+0.30</sup> <sub>+0.00</sub>	30	120	130	24.7	58.0	96.4	148.0	215.0	307.0	2.07
AD-T 60 x 80	RE020285	45	35	73	85±0.20	5	149.4 <sup>+1.60</sup> <sub>-0.40</sub>	36	80	90	26.4	60.0	98.6	152.4	210.5	302.0	2.07
AD-T 60 x 100	RE020286	45	35	73	85±0.20	5	149.4 <sup>+1.60</sup> <sub>-0.40</sub>	36	100	110	33.0	75.0	123.2	190.5	263.1	377.5	2.55
AD-T 60 x 150	RE020287	45	35	73	85±0.20	5	149.4 <sup>+1.60</sup> <sub>-0.40</sub>	36	150	160	49.5	112.5	184.8	285.8	394.6	566.3	3.82
AD-T 70 x 120	RE020290	50	40	78	90±0.20	5	156 <sup>+0.40</sup> <sub>+0.00</sub>	39	120	130	50.0	121.0	225.0	356.0	513.0	741.0	6.21



材料

尺寸从 20 至 60, 外壳为铝制拉丝, 内部方形管为钢制。尺寸为 70, 外壳和内部方形管均为钢制。

处理

外壳为烤炉涂漆, 所有内管镀锌。

AD-T 组件的优势在于可以之前所展示产品成倍的工作角度操作。通过各内部方形管的系列运作, 确实可达到 60° 的扭转角度 (图 1)。与特定夹具配合可作为弹性悬架使用 (图 2)。

MATERIAL

From size 20 to 60 external body is made out of light alloy profile while inner squares are made of steel. Size 70 external body and inner squares are made of steel. The external body and the inner square section tubes are made of steel.

TREATMENTS

The external body is oven-painted while the inner tubes are galvanized.

One advantage of the AD-T element is that a double working angle can be obtained with respect to the products described above. In fact, due to the inner square element arrangement, a rotation of 60° can be achieved (fig.1). Combined with special brackets, they can be used as elastic suspensions (fig.2).