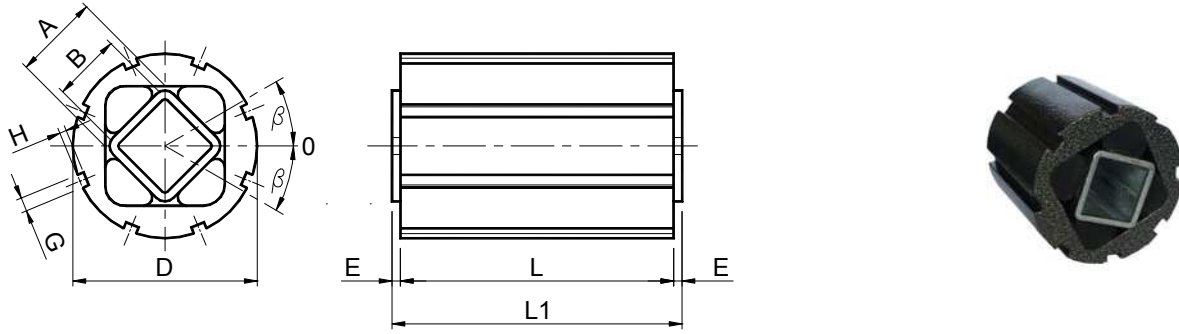


VIB 弹性组件 型号: AC-T / Elastic Components VIB Type: AC-T



型号 Type	编号 N°	A	B ^{+0.25} ₊₀	D	E	G	H	L	L1 ^{+0.0} _{-0.3}	在不同角度 α β 的扭矩 Q 以 Nm 表示 Torque Q in Nm at α β						重量 Weight in kg
										5°	10°	15°	20°	25°	30°	
AC-T 10 x 20	RE020160	11	8	28 ^{+0.30} _{+0.00}	2.5	4	2.5	20	25	0.3	0.8	1.3	1.9	2.8	3.8	0.02
AC-T 10 x 30	RE020161	11	8	28 ^{+0.30} _{+0.00}	2.5	4	2.5	30	35	0.4	1.2	2.0	2.9	4.2	5.7	0.04
AC-T 10 x 50	RE020162	11	8	28 ^{+0.30} _{+0.00}	2.5	4	2.5	50	55	0.7	2.0	3.3	4.8	7.0	9.5	0.06
AC-T 20 x 25	RE020165	15	11	36 ^{+0.30} _{+0.00}	2.5	5	2.5	25	30	0.7	1.6	2.5	3.8	5.4	7.8	0.05
AC-T 20 x 40	RE020166	15	11	36 ^{+0.30} _{+0.00}	2.5	5	2.5	40	45	1.1	2.5	4.0	6.1	8.7	12.5	0.09
AC-T 20 x 60	RE020167	15	11	36 ^{+0.30} _{+0.00}	2.5	5	2.5	60	65	1.6	3.8	6.0	9.2	13.0	18.8	0.12
AC-T 30 x 30	RE020170	18	12	45 ^{+0.40} _{+0.00}	2.5	5	2.5	30	35	1.8	4.2	7.0	10.5	14.3	19.5	0.12
AC-T 30 x 50	RE020171	18	12	45 ^{+0.40} _{+0.00}	2.5	5	2.5	50	55	3.0	7.0	11.7	17.5	23.8	32.5	0.17
AC-T 30 x 80	RE020172	18	12	45 ^{+0.40} _{+0.00}	2.5	5	2.5	80	85	4.8	11.2	18.9	28.0	38.2	52.0	0.31
AC-T 40 x 40	RE020175	27	22	62 ^{+0.50} _{+0.00}	2.5	6	3	40	45	4.7	10.2	16.5	25.6	37.6	54.2	0.25
AC-T 40 x 60	RE020176	27	22	62 ^{+0.50} _{+0.00}	2.5	6	3	60	65	6.8	15.3	24.8	38.4	56.4	81.3	0.37
AC-T 40 x 100	RE020177	27	22	62 ^{+0.50} _{+0.00}	2.5	6	3	100	105	11.8	25.5	41.2	64.0	94.0	135.5	0.62
AC-T 50 x 60	RE020180	38	30	80 ^{+0.60} _{+0.00}	5	7	3.5	60	70	12.4	29.0	48.2	74.0	107.5	153.5	0.67
AC-T 50 x 80	RE020181	38	30	80 ^{+0.60} _{+0.00}	5	7	3.5	80	90	16.5	38.7	64.3	98.7	143.4	204.7	0.88
AC-T 50 x 120	RE020182	38	30	80 ^{+0.60} _{+0.00}	5	7	3.5	120	130	24.7	58.0	96.4	148.0	215.0	307.0	1.31
AC-T 60 x 80	RE020185	45	35	95 ^{+0.80} _{+0.00}	5	8	4	80	90	26.4	60.0	98.6	152.4	210.5	302.0	1.29
AC-T 60 x 100	RE020186	45	35	95 ^{+0.80} _{+0.00}	5	8	4	100	110	33.0	75.0	123.2	190.5	263.1	377.5	1.54
AC-T 60 x 150	RE020187	45	35	95 ^{+0.80} _{+0.00}	5	8	4	150	160	49.5	112.5	184.8	285.8	394.6	566.3	2.32
AC-T 70 x 120	RE020190	50	40	108 ^{+1.00} _{+0.00}	5	8	4	120	130	50.0	121.0	225.0	356.0	513.0	741.0	2.42
AC-T 70 x 200	RE020191	50	40	108 ^{+1.00} _{+0.00}	5	8	4	200	210	100.0	237.0	428.0	670.0	963.0	1378.0	4.11
AC-T 70 x 300	RE020192	50	40	108 ^{+1.00} _{+0.00}	5	8	4	300	310	147.0	350.0	630.0	990.0	1431.0	2052.0	6.32

材料

外壳为铝制拉丝，内部方形管为钢制。

处理

外壳为烤炉涂漆，内管镀锌。

固定

通过具略磨过角的方形拉丝部件，或者使用一个通孔螺栓的摩擦取得内部联接，在后种情况下，我们建议仅使用尺寸为 **10-20-30** 的组件。为了更清楚，内管的承受力在以上表中列出。外部部件可使用 **SC** 型夹具固定。外壳上的槽便于使用侧面孔钩扳手将弹性组件预加负荷。

MATERIALS

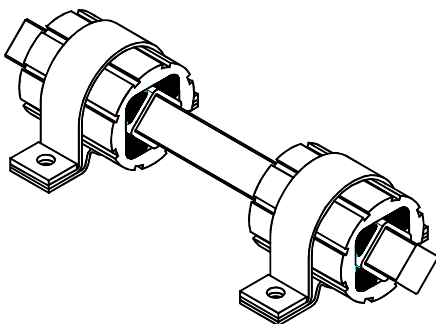
The external body is made of light alloy profile while the square inner section tube is made of steel.

TREATMENTS

The external body is oven-painted while the inner tube is covered with a RAL varnish in order to maintain the tolerances unaltered.

FITTING

Internal coupling is obtained with square-drawn section with slightly smoothed angles, or by friction using a passing bolt but in this case we recommend to use only 10-20-30 sizes. The tolerances of the internal channel are listed in the above table. The external structure can be fixed by the SC clamp. The grooves on the outer body help pre-load the elastic element by means of a pin wrench.



型号 AC-T 配 SC 夹具
Type AC-T with SC clamp