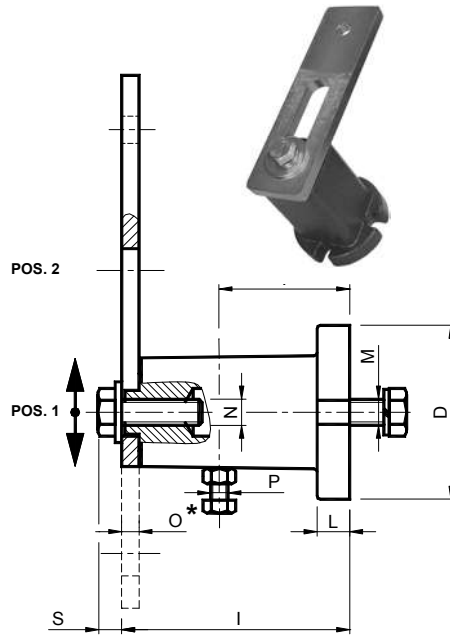
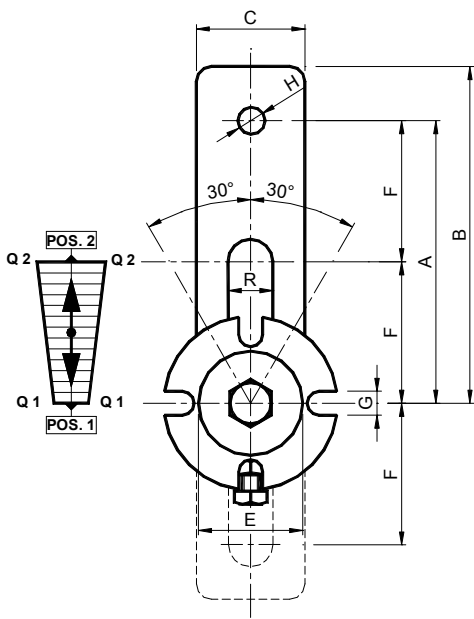



**具可变负载的张紧装置组件 – 型号: ME (↓) /**
**Tighteners elements with variable loading – Type: ME (↓)**


 扭转角度  $\pm 30^\circ$

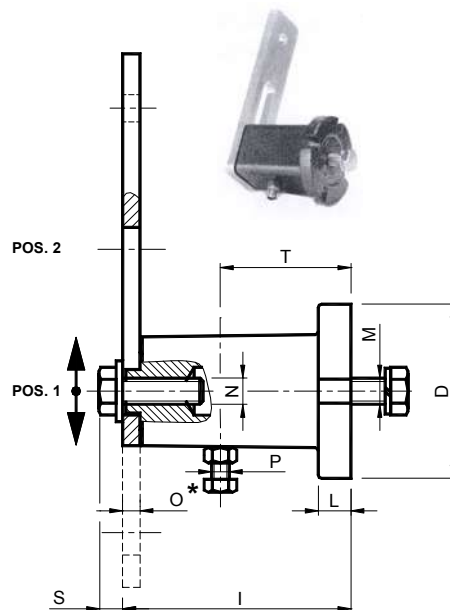
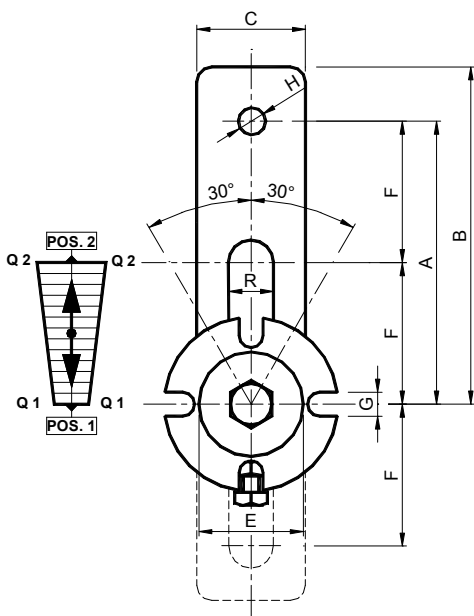
工作温度从  $-40^\circ\text{C}$  至  $+80^\circ\text{C}$


通过对摇杆调整产生力量的变化。以这种方式，将手柄从位置 1 移动到位置 2，可改变臂负载直至成倍；手柄可在位置 1 和位置 2 之间空槽所有中间位置固定，所产生的相应负载与臂成反比。

 *Rotation angle  $\pm 30^\circ$*

*Operating temperature from  $-40^\circ\text{C}$  to  $+80^\circ\text{C}$   
 Variation of the force developed by adjusting the slotter lever. In this way the arm load can be varied and even doubled by moving the lever from 1 to position 2. The lever can be fixed in all the intermediate slot positions between positions 1 and 2 and the loads developed are inversely proportional to the arms.*

型号 Type	编号 N°	A	B	C	Ø D	Ø E	F	G	Ø H	I	L	M	N	O	P	Ø R	T	Newton $0^\circ-30^\circ$		重量 Weight in Kg	型号 Type	编号 N°		
																		位置 1 Q 1	位置 2 Q 2					
ME 10	RE010430	80	90	25	40	20	40	7	8.5	51	6	M 6	M 6	6	M 4	10	25	0+	85	0+	113	0.28	MEP 10	RE010500
ME 20	RE010440	100	112.5	30	50	30	50	9	10.5	63	8	M 8	M 8	6	M 6	12	35	0+	136	0+	170	0.48	MEP 20	RE010510
ME 30	RE010450	100	115	35	60	35	50	9	10.5	78	10	M10	M10	8	M 6	14.5	40	0+	340	0+	425	0.73	MEP 30	RE010520
ME 40	RE010460	130	155	50	80	48	50	11	12.5	107	15	M12	M12	10	M 8	20.5	60	0+	790	0+	1027	2.00	MEP 40	RE010530
ME 50	RE010470	175	205	65	100	62	65	13	20.5	138	15	M16	M16	12	M 8	27	80	0+	1600	0+	2000	4.20	MEP 50	RE010540
ME 60	RE010480	225	260	80	120	80	87.5	13	20.5	199	18	M20	M20	15	M10	35	115	0+	2550	0+	3190	7.00	MEP 60	RE010550
ME 70	RE010490	250	290	90	130	78	110	17	20.5	212	20	M24	M24	20	M12	42	115	0+	3950	0+	4950	10.00	MEP 70	RE010560

**具可变负载和预加负荷用螺钉(\*)的张紧装置组件– 型号: MEP (↓) / Tighteners elements with variable loading and screw for preloading (\*) – Type : MEP (↓)**


 扭转角度  $\pm 30^\circ$

工作温度从  $-40^\circ\text{C}$  至  $+80^\circ\text{C}$

通过对摇杆调整产生力量的变化。以这种方式，将手柄从位置 1 移动到位置 2，可改变臂负载直至成倍；手柄可在位置 1 和位置 2 之间空槽的所有中间位置固定，所产生的相应负载与臂成反比。

为了便利安装、拆除和调整的操作，配有预加负荷系统。

 *Rotation angle  $\pm 30^\circ$*

*Operating temperature from  $-40^\circ\text{C}$  to  $+80^\circ\text{C}$   
 Variation of the force developed by adjusting the slotter lever. In this way the arm load can be varied and even doubled by moving the lever from 1 to position 2. The lever can be fixed in all the intermediate slot positions between positions 1 and 2 and the loads developed are inversely proportional to the arms. Equipped with preloading system (\*) in order to facilitate the mounting, dismounting and regulation operations.*