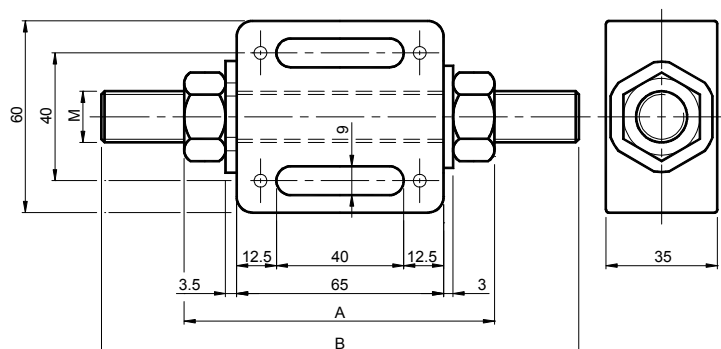


TEN BLOC 手动从动轴张紧组件 – 型号: GRT *TEN BLOC Manual return units – Type: GRT*

GRT 手动从动轴张紧组件应用简便，经济实用，适用于众多领域。如同 DECA 产品一样，在盒状主体上的槽中通过螺钉而固定。而且在有必要时，可使用其上的凹处通过螺钉 M6 或桩销 Ø6 mm 加强固定。GRT 可单独使用或者与在第 83 页所显示的配套元件一并使用。



The GRT manual return units are easy to use and are suitable, in a not too expensive way, to many application solutions. The fastening is made through screws on the slots of the box body like in the DECA articles. Also here, if necessary, the existent notches to reinforce the fastening through screws M6 or pins Ø6 mm. The GRT articles can be used separately or with the kit illustrated from page 83.



材料 主体为铝制，堵盖、螺纹棒及螺帽均为钢制。

处理 喷砂铝，局部为镀锌钢。

应用 手动挤压组件。

MATERIALS Body made of aluminium, stoppers, threaded rod and nuts made of steel.

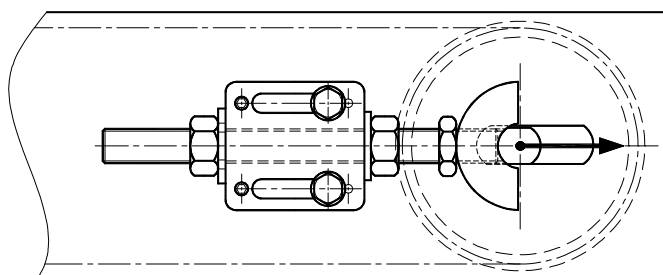
TREATMENTS Sandblasted aluminium. Components made of galvanized steel.

USE Manual pressure unit.

型号 Type	编号 N°	A	B	M	重量 Weight in Kg
GRT M10 150	TB050000	87.5	150	M10	0.35
GRT M12 150	TB050005	91.5	150	M12	0.40
GRT M14 160	TB050010	93.5	160	M14	0.45
GRT M16 160	TB050015	97.5	160	M16	0.55
GRT M18 180	TB050020	101.5	180	M18	0.65
GRT M20 200	TB050025	103.5	200	M20	0.75

若有要求，可订与产品目录中所列的螺纹棒“B”长度不同的组件。

On demand You can order units with lengths of the threaded rod “B” different from those ones indicated on catalogue.



应用实例
Application example