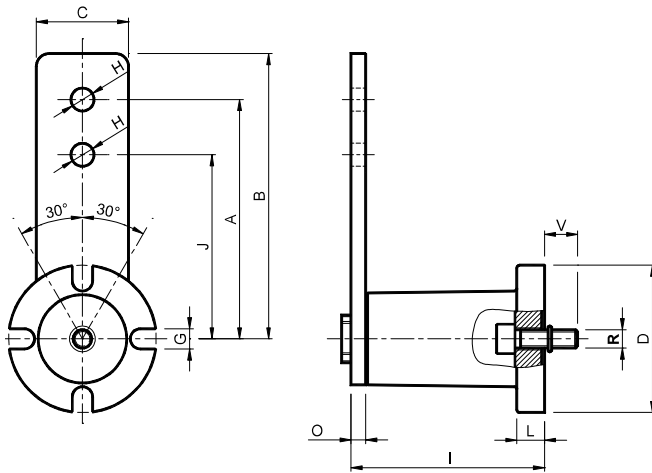




Tensioning elements with front mounting – Type: FE
Elementi tenditori con montaggio frontale – Tipo: FE



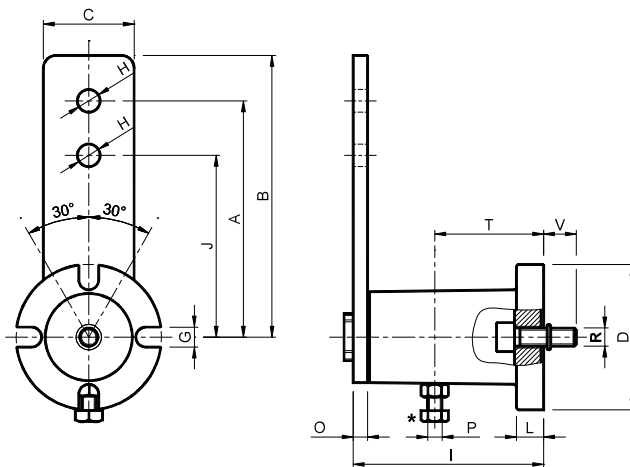
MATERIALS Sizes 10, 20, 30 and 70 the body is made of steel. Sizes 40, 50, 60 the body is made of cast iron. The lever is made of steel. TREATMENTS Oven-painted. Galvanized screws. USE Operating temperature from -40° C to +80° C.

MATERIALI Grandezza 10, 20, 30 e 70 il corpo è in acciaio, Grandezza 40, 50, 60 il corpo è in ghisa. La leva è in acciaio. TRATTAMENTI Verniciatura a forno. Viti zincate. IMPIEGO Temperatura di lavoro da -40°C a +80°C.



Table with 20 columns: Type Tipo, Cod. N°, A, B, C, ØD, G, ØH, I, J, L, O, * P, R, T, V, Newton 0°-30° Arm A Braccio A, Newton 0°-30° Arm J Braccio J, Weight Peso [kg], Type Tipo, Cod. N°. Rows include FE 10, FE 20, FE 30, FE 40, FE 50, FE 60, FE 70.

Tensioning elements with front mounting and screw for preloading (*) – Type: FEP
Elementi tenditori con montaggio frontale e vite per precarica (*) – Tipo: FEP



MATERIALS Sizes 10, 20, 30 and 70 the body is made of steel. Sizes 40, 50, 60 the body is made of cast iron. The lever is made of steel. TREATMENTS Oven-painted. Galvanized screws. USE Operating temperature from -40° C to +80° C.

MATERIALI Grandezza 10, 20, 30 e 70 il corpo è in acciaio, Grandezza 40, 50, 60 il corpo è in ghisa. La leva è in acciaio. TRATTAMENTI Verniciatura a forno. Viti zincate. IMPIEGO Temperatura di lavoro da -40°C a +80°C.