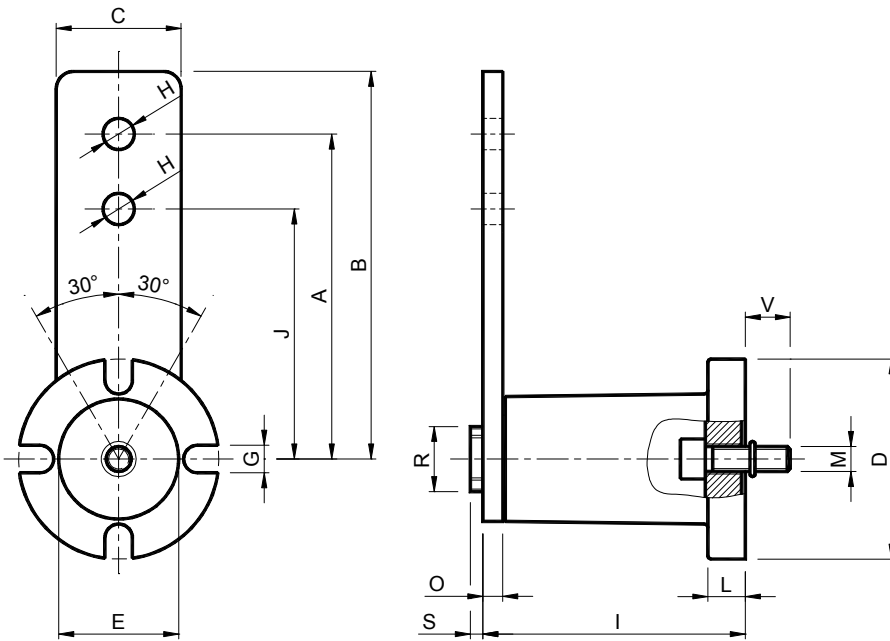


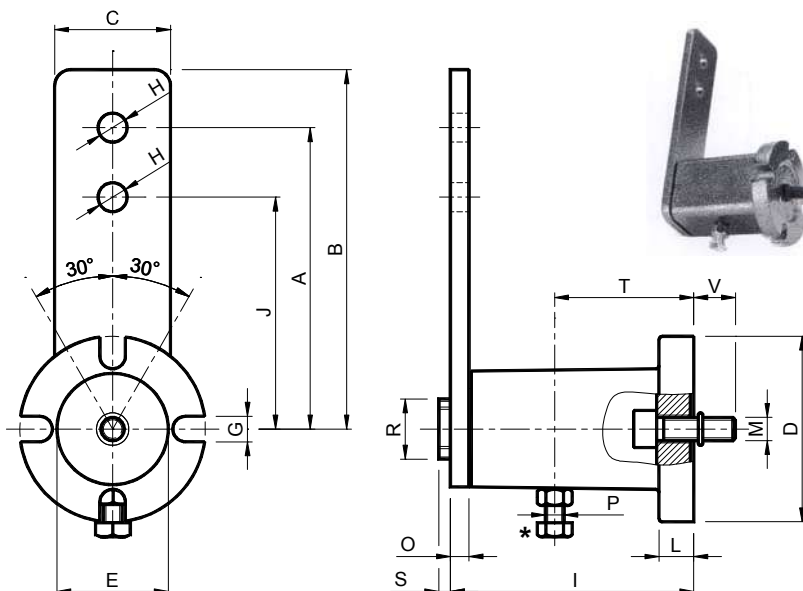



前端安装的张紧装置组件 – 型号: FE / Tighteners elements with front mounting – Type: FE


 扭转角度 $\pm 30^\circ$
 工作温度从 -40°C 至 $+80^\circ\text{C}$
 使用内部螺钉 M 的前端安装。


 *Rotation angle $\pm 30^\circ$
 Operating temperature from -40°C to $+80^\circ\text{C}$
 Frontal mounting with interior M screw.*

型号 Type	编号 N°	A	B	C	$\varnothing D$	$\varnothing E$	G	$\varnothing H$	I	J	L	M	O	P	$\varnothing R$	S	T	V	Newton $0^\circ\text{-}30^\circ$ 臂 A Arm A	Newton $0^\circ\text{-}30^\circ$ 臂 J Arm J	重量 Weight in Kg	型号 Type	编号 N°
FE 10	RE010150	80	90	25	40	20	7	8.5	50	60	6	M 5	5	M 4	14	3.5	25	10	0÷ 85	0÷ 113	0.25	FEP 10	RE010220
FE 20	RE010160	100	112.5	30	50	30	9	10.5	62	80	8	M 6	5	M 6	20	5	35	14	0÷ 136	0÷ 170	0.45	FEP 20	RE010230
FE 30	RE010170	100	115	35	60	35	9	10.5	76	80	10	M 8	6	M 6	20	5	40	19	0÷ 340	0÷ 425	0.69	FEP 30	RE010240
FE 40	RE010180	130	155	50	80	48	11	12.5	105	100	15	M 10	8	M 8	26	5	60	18	0÷ 790	0÷ 1027	1.90	FEP 40	RE010250
FE 50	RE010190	175	205	65	100	62	13	20.5	136	140	15	M 12	10	M 8	35	6	80	20	0÷ 1600	0÷ 2000	3.90	FEP 50	RE010260
FE 60	RE010200	225	260	80	120	80	13	20.5	196	180	18	M 16	12	M10	40	6	115	36	0÷ 2550	0÷ 3190	6.90	FEP 60	RE010270
FE 70	RE010210	250	290	90	130	78	17	20.5	210	200	20	M 20	20	M12	40	6	115	25	0÷ 3950	0÷ 4950	9.50	FEP 70	RE010280

配预加负荷用螺钉(*)用于前端安装的张紧装置组件– 型号: FEP /
Tighteners elements with front mounting and screw for preloading (*) – Type: FEP


 扭转角度 $\pm 30^\circ$
 工作温度从 -40°C 至 $+80^\circ\text{C}$
 使用内部螺钉 M 的前端安装。

为了便利安装、拆除和调整的操作，配有预加负荷系统(*)

 *Rotation angle $\pm 30^\circ$
 Operating temperature from -40°C to $+80^\circ\text{C}$
 Frontal mounting with interior M screw.
 Equipped with preloading system (*) in order to facilitate the mounting, dismounting and regulation operations.*