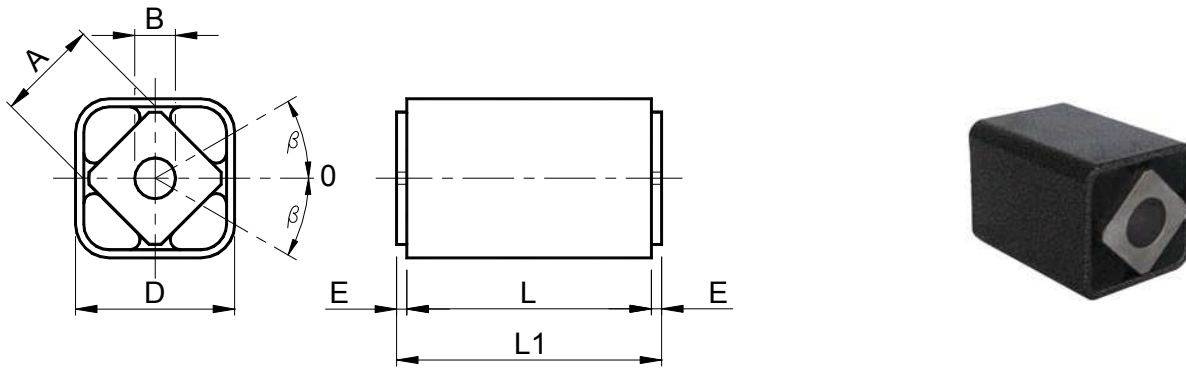
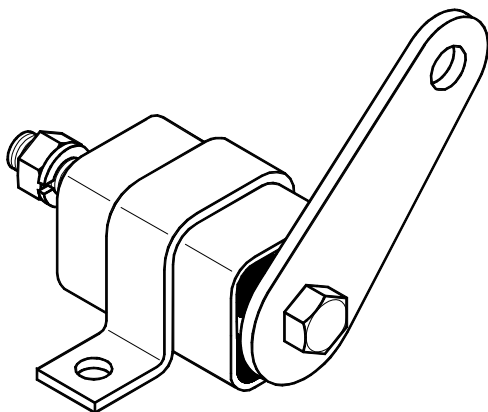


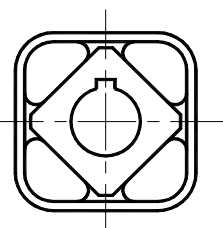
## VIB 弹性组件 型号: AR-F / Elastic Components VIB Type: AR-F



型号 Type	编号 N°	A	B	D	E	L	L1 <sup>+0.0 -0.3</sup>	在不同角度*β的扭矩 Q 以 Nm 表示 Torque Q in Nm at *β						重量 Weight in kg
								5°	10°	15°	20°	25°	30°	
AR-F 20 x 25	RE020115	15	10 <sup>+0.40 +0.20</sup>	27 <sup>+0.20 -0.10</sup>	2.5	25	30	0.7	1.6	2.5	3.8	5.4	7.8	0.07
AR-F 20 x 40	RE020116	15	10 <sup>+0.40 +0.20</sup>	27 <sup>+0.20 -0.10</sup>	2.5	40	45	1.1	2.5	4.0	6.1	8.7	12.5	0.11
AR-F 20 x 60	RE020117	15	10 <sup>+0.40 +0.20</sup>	27 <sup>+0.20 -0.10</sup>	2.5	60	65	1.6	3.8	6.0	9.2	13.0	18.8	0.17
AR-F 30 x 30	RE020120	18	13 <sup>+0.00 -0.20</sup>	32 <sup>+0.10 -0.20</sup>	2.5	30	35	1.8	4.2	7.0	10.5	14.3	19.5	0.11
AR-F 30 x 50	RE020121	18	13 <sup>+0.00 -0.20</sup>	32 <sup>+0.10 -0.20</sup>	2.5	50	55	3.0	7.0	11.7	17.5	23.8	32.5	0.18
AR-F 30 x 80	RE020122	18	13 <sup>+0.00 -0.20</sup>	32 <sup>+0.10 -0.20</sup>	2.5	80	85	4.8	11.2	18.9	28.0	38.2	52.0	0.28
AR-F 40 x 40	RE020125	27	16 <sup>+0.50 +0.30</sup>	45 <sup>+0.20 -0.10</sup>	2.5	40	45	4.7	10.2	16.5	25.6	37.6	54.2	0.28
AR-F 40 x 60	RE020126	27	16 <sup>+0.50 +0.30</sup>	45 <sup>+0.20 -0.10</sup>	2.5	60	65	6.8	15.3	24.8	38.4	56.4	81.3	0.39
AR-F 40 x 100	RE020127	27	16 <sup>+0.50 +0.30</sup>	45 <sup>+0.20 -0.10</sup>	2.5	100	105	11.8	25.5	41.2	64.0	94.0	135.5	0.65
AR-F 50 x 60	RE020130	38	20 <sup>+0.50 +0.20</sup>	60 <sup>+0.15 -0.30</sup>	5	60	70	12.4	29.0	48.2	74.0	107.5	153.5	0.65
AR-F 50 x 80	RE020131	38	20 <sup>+0.50 +0.20</sup>	60 <sup>+0.15 -0.30</sup>	5	80	90	16.5	38.7	64.3	98.7	143.4	204.7	0.84
AR-F 50 x 120	RE020132	38	20 <sup>+0.50 +0.20</sup>	60 <sup>+0.15 -0.30</sup>	5	120	130	24.7	58.0	96.4	148.0	215.0	307.0	2.10
AR-F 60 x 80	RE020135	45	24 <sup>+0.50 +0.20</sup>	72 <sup>+0.15 -0.30</sup>	5	80	90	26.4	60.0	98.6	152.4	210.5	302.0	1.12
AR-F 60 x 100	RE020136	45	24 <sup>+0.50 +0.20</sup>	72 <sup>+0.15 -0.30</sup>	5	100	110	33.0	75.0	123.2	190.5	263.1	377.5	1.25
AR-F 70 x 120	RE020140	50	30 <sup>+0.50 +0.20</sup>	78 <sup>+0.15 -0.30</sup>	5	120	130	50.0	121.0	225.0	356.0	513.0	741.0	1.97
AR-F 70 x 200	RE020141	50	30 <sup>+0.50 +0.20</sup>	78 <sup>+0.15 -0.30</sup>	5	200	210	100.0	237.0	428.0	670.0	963.0	1378.0	3.35



型号 AR-F 配 SR 夹具 / Type AR-F with SR clamp



### 材料

外壳为钢制，内部方管为铝制拉丝。

### 处理

外壳为烤炉涂漆，内管由 RAL 涂漆覆盖。

### 固定

使用通孔螺栓的摩擦连接。这种办法使得在 360°内任何角度可与一个手柄迅速联接。我们建议您尤其注意造成扭转角度超过±10°的高摆动负荷，在此情况下，若有需要，我们可提供由 UNI 6604 规范所指定的具有插片槽空洞的产品。

### MATERIAL

The external body is made of steel while the inner square is made of light alloy profile.

### TREATMENTS

The external body is oven-painted while the inner square is covered with a RAL varnish.

### FITTING

Connection is obtained by friction through a passing bolt. As a result, the one-lever coupling can rapidly select and reach a position over 360°. We recommend that you pay special attention to the high loads that need rotations over ±10°. In this case we can supply the product with a hole to house a tongue in compliance with the UNI 6604 norms.