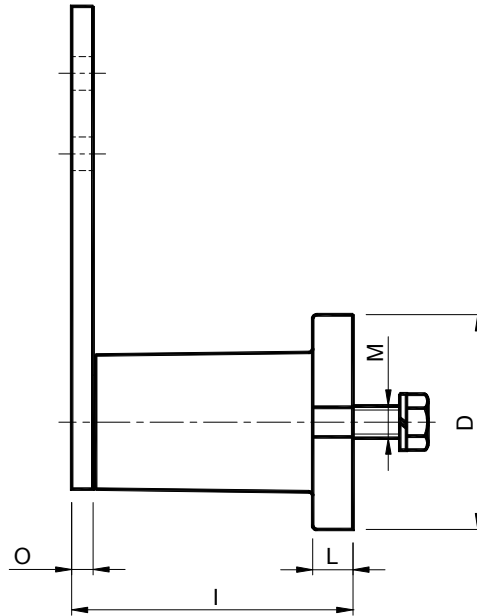
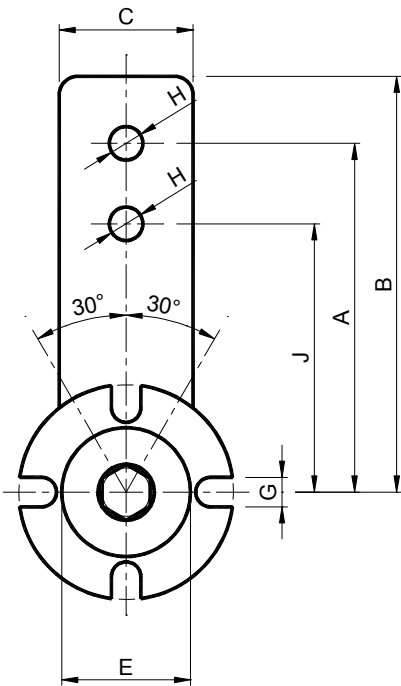


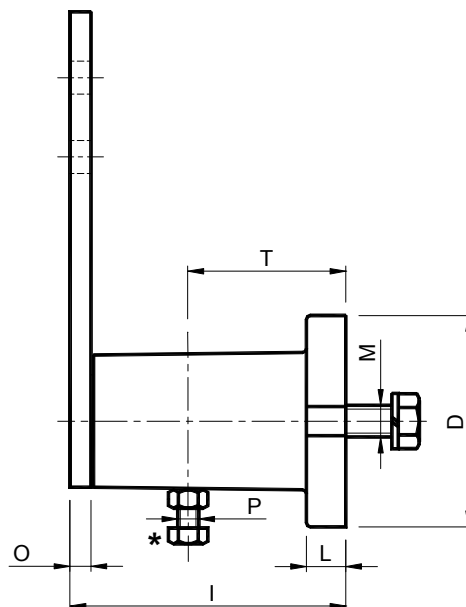
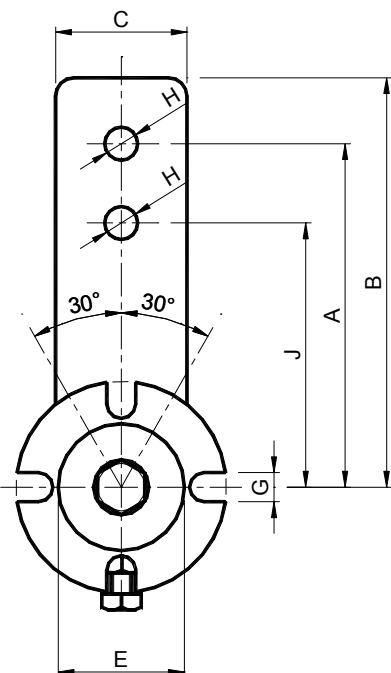



**张紧装置组件- 型号: RE / Tighteners elements – Type: RE**



 扭转角度  $\pm 30^\circ$   
 工作温度从  $-40^\circ\text{C}$  至  $+80^\circ\text{C}$

 *Rotation angle  $\pm 30^\circ$*   
*Operating temperature from  $-40^\circ\text{C}$  to  $+80^\circ\text{C}$*

型号 Type	编号 N°	A	B	C	Ø D	Ø E	G	Ø H	I	J	L	M	O	P	T	Newton 0°-30° 臂 A Arm A	Newton 0°-30° 臂 J Arm J	重量 Weight in Kg	型号 Type	编号 N°
RE 10	RE010010	80	90	25	40	20	7	8.5	50	60	6	M 6	5	M 4	25	0÷ 85	0÷ 113	0.28	REP 10	RE010080
RE 20	RE010020	100	112.5	30	50	30	9	10.5	62	80	8	M 8	5	M 6	35	0÷ 136	0÷ 170	0.48	REP 20	RE010090
RE 30	RE010030	100	115	35	60	35	9	10.5	76	80	10	M 10	6	M 6	40	0÷ 340	0÷ 425	0.73	REP 30	RE010100
RE 40	RE010040	130	155	50	80	48	11	12.5	105	100	15	M 12	8	M 8	60	0÷ 790	0÷1027	2.00	REP 40	RE010110
RE 50	RE010050	175	205	65	100	62	13	20.5	136	140	15	M 16	10	M 8	80	0÷1600	0÷2000	4.20	REP 50	RE010120
RE 60	RE010060	225	260	80	120	80	13	20.5	196	180	18	M 20	12	M 10	115	0÷2550	0÷3190	7.00	REP 60	RE010130
RE 70	RE010070	250	290	90	130	78	17	20.5	210	200	20	M 24	20	M 12	115	0÷3950	0÷4950	9.60	REP 70	RE010140

**配预加负荷用螺钉(\*)的张紧装置组件- 型号: REP /  
 Tighteners elements with preloading screw (\*) – Type REP**


 扭转角度  $\pm 30^\circ$   
 工作温度从  $-40^\circ\text{C}$  至  $+80^\circ\text{C}$   
 为了便利安装、拆除和调整的操作，配有预加负荷系统 (\*)

 *Rotation angle  $\pm 30^\circ$*   
*Operating temperature from  $-40^\circ\text{C}$  to  $+80^\circ\text{C}$*   
*Equipped with preloading system (\*) in order to facilitate the mounting, dismounting and regulation operations.*