

张紧装置附件 型号 ST / Accessories for chain tighteners type ST



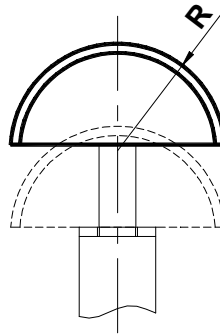
具半圆形轮廓滑块，适用于小轴距和靠近链轮的安装。

材料：高分子密度聚乙烯。

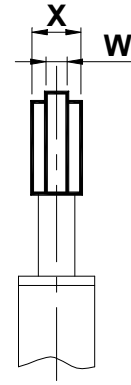
工作速度 ≤ 20 m/min。

工作温度 $\leq 70^\circ\text{C}$ 。

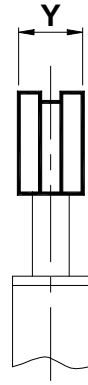
Semi-circular sliding block suitable for reduced interaxis or for installation closed to the pinion.
 Material: Polyethylene with high molecular density.
 Operating speed ≤ 20 m/min.
 Sliding block operating temperature $\leq 70^\circ\text{C}$.



Semplice S
Simplex S



Doppio D
Duplex D



型号 Type	编号 S	编号 D	R	W	X	Y	重量 Weight in kg	
							S	D
ST1-2 3/8"	AS010585	AS010600	35	5	16	18	0.03	0.03
ST1-2 1/2"	AS010586	AS010601	35	7	16	20.5	0.03	0.03
ST2-3 5/8"	AS010588	AS010603	45	9	17	25	0.04	0.08
ST3 3/4"	AS010590	AS010605	45	11	17	30	0.05	0.09
ST3 1"	AS010591	AS010606	55	16	18	47	0.08	0.20

张紧装置附件 型号 SP / Accessories for chain tighteners type SP



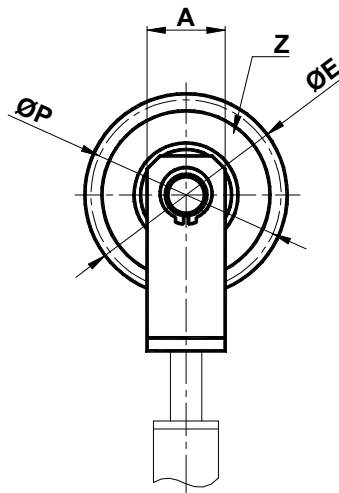
头部由一个安装在支架上的空转链轮组成。

具底部扩大轴承的钢制链轮。

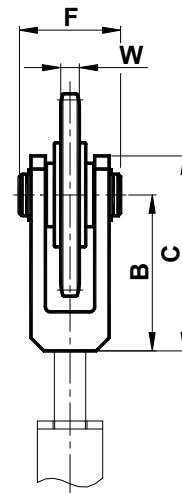
工作速度 ≤ 60 m/min。

工作温度 $\leq 100^\circ\text{C}$ 。

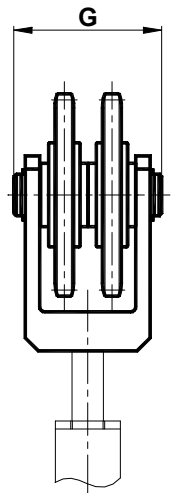
The head is composed by a idle pignon, installed on a fork.
 Steel pinion with enlarged bearing.
 Operating speed ≤ 60 m/min.
 Operating temperature $\leq 100^\circ\text{C}$.



Semplice S
Simplex S



Doppio D
Duplex D



型号 Type	编号 S	编号 D	A	B	C	ØE	F	G	W	ØP	Z	重量 Weight in kg	
												S	D
SP1-2 3/8"	AS010630	AS010645	30	60	75	68.0	40	60	5.3	63.90	21	0.29	0.52
SP1-2 1/2"	AS010631	AS010646	30	60	75	77.8	40	60	7.2	73.14	18	0.36	0.65
SP3 5/8"	AS010634	AS010649	30	70	85	93.0	45	65	9.1	86.39	17	0.51	0.96
SP3 3/4"	AS010635	AS010650	30	70	85	99.8	45	65	11.1	91.63	15	0.57	1.14