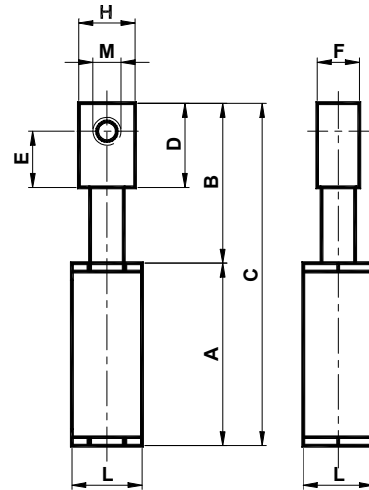


Asso 张紧装置 型号 SE / Asso Tensioner type SE



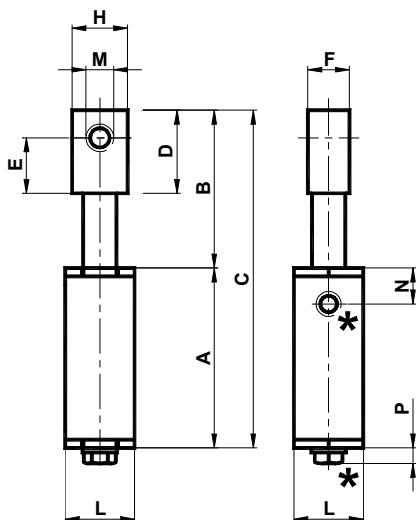
具单柱张紧装置组件。方形主体为铝制；方柱和帽为镀锌钢制。轴衬为黄铜制。薄板为镀锌钢制。

Tensioner element with single pin. The square body is made in aluminium; the pin and the cap are in galvanized steel. The bushing is in brass. The plaque is in galvanized steel.

型号 Type	编号	A	B	C	D	E	F	H	L	M	N	P	Newton	重量 Weight in kg	型号 Type	编号
SE1-8	AS010525	59	57	116	30	20	15	20	25	M 8	18	/	0-140	0.22	SEB1-8	AS010540
SE1-10	AS010526	59	57	116	30	20	15	20	25	M10	18	/	0-140	0.20	SEB1-10	AS010541
SE1-16	AS010527	59	57	116	30	20	15	30	25	M16	18	/	0-140	0.25	SEB1-16	AS010542
SE2-10	AS010528	71	65	136	30	20	15	20	30	M10	20	/	0-210	0.31	SEB2-10	AS010543
SE2-16	AS010529	71	65	136	30	20	15	30	30	M16	20	/	0-210	0.34	SEB2-16	AS010544
SE3-12	AS010530	92.5	72	164.5	30	20	15	20	35	M12	/	7.1	0-400	0.49	SEB3-12	AS010545
SE3-16	AS010531	92.5	72	164.4	30	20	15	30	35	M16	/	7.1	0-400	0.52	SEB3-16	AS010546

Asso 张紧装置 型号 SEB / Asso Tensioner type SEB

具预加负荷用螺钉 / with preloading screw



具单柱张紧装置组件。方形主体为铝制；方柱和帽为镀锌钢制。轴衬为黄铜制。薄板为镀锌钢制。SEB 张紧装置组件具预加负荷用螺钉(尺寸 1 和 2, STEI (N)螺钉；尺寸 3, TE (P) 螺钉)，以便简化安装操作。

Tensioner element with single pin. The square body is made in aluminium; the pin and the cap are in galvanized steel. The bushing is in brass. The plaque is in galvanized steel. The SEB tensioner element has a preloading screw (STEI screw (N) in the sizes 1 and 2; TE screw (P) in the size 3) to make more easy the assembly operations.

\* 预加负荷用螺钉 / Preloading screw