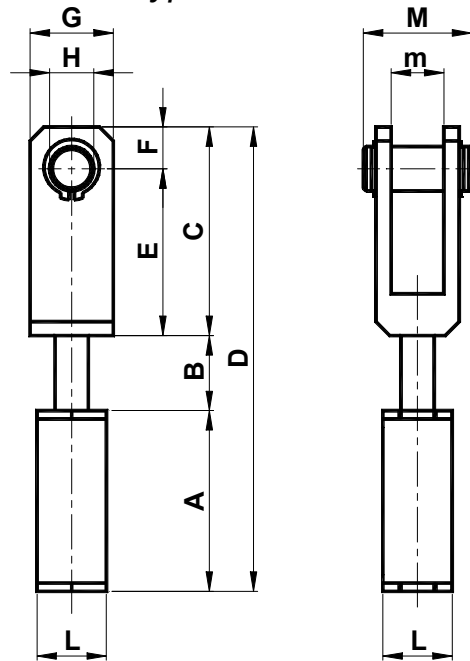


Tendeur Asso type SA / Asso Tensioner type SA

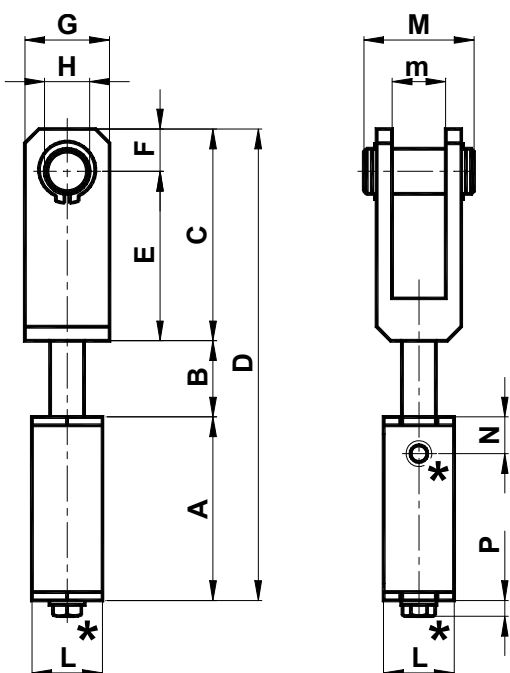


Elément tendeur à colonne simple. La section carrée est en aluminium, la colonne et le bouchon sont en acier zingué et l'anneau en laiton. La fourche peut être en aluminium ou en acier verni.

Tensioner element with single pin. The square body is made in aluminium; the pin and the cap are in galvanized steel. The bushing is in brass. The fork can be in aluminium or painted steel.

| Type Type | code | A | B | C | D | E | F | G | H | L | M | m | N | P | Newton | Poids Weight in kg | Type Type | code |
|-----------|----------|------|----|----|-------|------|------|----|----|----|-----|----|----|-----|--------|--------------------|-----------|----------|
| SA1/0 | AS010489 | 59 | 27 | 75 | 161 | 60 | 15 | 30 | 16 | 25 | 40 | 19 | 21 | / | 0-140 | 0.31 | SAB1/0 | AS010509 |
| SA2/0 | AS010490 | 71 | 35 | 75 | 181 | 60 | 15 | 30 | 16 | 30 | 40 | 19 | 23 | / | 0-140 | 0.40 | SAB2/0 | AS010510 |
| SA2/1 | AS010491 | 71 | 35 | 85 | 191 | 70 | 15 | 30 | 16 | 30 | 45 | 19 | 23 | / | 0-210 | 0.44 | SAB2/1 | AS010511 |
| SA2/2 | AS010492 | 71 | 35 | 75 | 181 | 60 | 15 | 30 | 16 | 30 | 60 | 37 | 23 | / | 0-210 | 0.45 | SAB2/2 | AS010512 |
| SA2/3 | AS010493 | 71 | 35 | 85 | 191 | 70 | 15 | 30 | 16 | 30 | 65 | 37 | 23 | / | 0-400 | 0.50 | SAB2/3 | AS010513 |
| SA3/4 | AS010494 | 92.5 | 42 | 85 | 219.5 | 70 | 15 | 35 | 16 | 35 | 80 | 56 | / | 7.1 | 0-400 | 1.03 | SAB3/4 | AS010514 |
| SA3/5 | AS010495 | 92.5 | 42 | 95 | 229.5 | 77.5 | 17.5 | 40 | 20 | 35 | 45 | 19 | / | 7.1 | 0-400 | 0.72 | SAB3/5 | AS010515 |
| SA3/6 | AS010496 | 92.5 | 42 | 95 | 229.5 | 77.5 | 17.5 | 40 | 20 | 35 | 77 | 51 | / | 7.1 | 0-400 | 1.30 | SAB3/6 | AS010516 |
| SA3/7 | AS010497 | 92.5 | 42 | 95 | 229.5 | 77.5 | 17.5 | 40 | 20 | 35 | 110 | 80 | / | 7.1 | 0-400 | 1.63 | SAB3/7 | AS010517 |

Tendeur Asso type SAB / Asso Tensioner type SAB avec vis de pré-tension / with preloading screw



Elément tendeur à une colonne. La section carrée est en aluminium; la colonne et le bouchon en acier zingué et l'anneau en laiton. La fourche peut être en aluminium ou en acier verni. L'élément tendeur SAB a une vis de pré-tension (vis STEI (N) taille 1 et 2; vis TE (P) taille 3) pour faciliter les opérations de montage.

Tensioner element with single pin. The square body is made in aluminium; the pin and the cap are in galvanized steel. The bushing is in brass. The fork can be in aluminium or painted steel. The SAB tensioner element has a preloading screw (STEI screw (N) in the sizes 1 and 2; TE screw (P) in the size 3) to make more easy the assembly operations.

*Vis de pré-tension/ Preloading screw