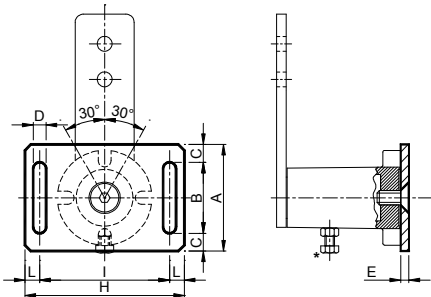


附件 / Accessories



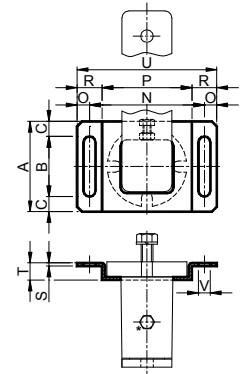
支架 – 型号: SU / Support – Type: SU

支架 – 型号: ST / Support – Type: ST



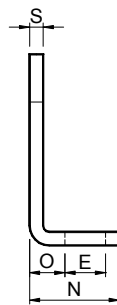
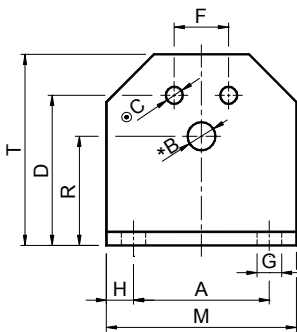
使用夹具“SU”和“ST”，可能对“放射型”和“轴型”弹性组件进行双重调整。在以轴调整安装的情况下，有必要首先使用适当的螺钉(*)将张紧装置预加负荷，然后(沿着所选方向)使用支架上的空槽移动整个组件。

The elastic element can be adjusted two ways radially and axially by means of the brackets “SU” and “ST”. When fitting with axial adjustment, the tensioner must be firstly preloaded by means of the screw (*) and then the whole unit can be moved (in the required direction) using the slots in the supporting element.



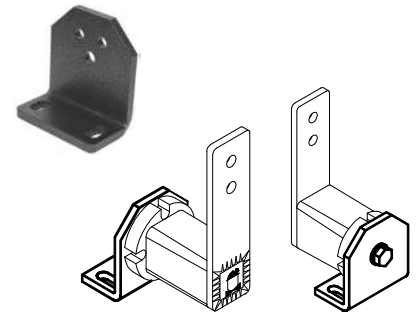
型号 Type	编号 N°	重量 Weight in Kg	A	B	C	D	E	H	I	L	N	O	P	S	T	V	重量 Weight in Kg	型号 Type	编号 N°
SU 10	RE011010	0.07	40	30	5	7	4	75	60	7.5	65	7.5	46	2	7.4	7	0.03	ST 10	RE011020
SU 20	RE011011	0.18	55	35	10	9	5	95	75	10	80	10	58	2	9	9	0.07	ST 20	RE011021
SU 30	RE011012	0.27	65	40	12.5	9	6	105	85	10	95	10	70	2.5	11.5	9	0.13	ST 30	RE011022
SU 40	RE011013	0.60	90	60	15	11	7	135	110	12.5	115	12.5	90	3	17	12	0.27	ST 40	RE011023
SU 50	RE011014	0.90	110	70	20	13	8	160	135	12.5	145	12.5	115	4	18	14	0.39	ST 50	RE011024
SU 60	RE011015	1.70	130	90	20	17	10	200	160	20	180	15	140	5	22	18	0.75	ST 60	RE011025

夹具 – 型号: SB / Support – Type: SB



夹具 SB 用于简化弹性组件在机器上的安装。

The bracket SB is used to facilitate the assembly of the elastic element on the machine.



型号 Type	编号 N°	A	* □			D	E	F	G	H	M	N	O	R	S	T	重量 Weight in kg	
			尺寸 Size	B	尺寸 Size													C
SB 10	RE020510	30	10	6.5	20	5.5	35	13	10	7	7.5	45	30	11.5	27	4	46	0.09
SB 20	RE020511	40	20	8.5	30	6.5	44	13	12	7	7.5	55	32	13.5	34	5	58	0.17
SB 30	RE020512	50	30	10.5	40	8.5	55	15.5	20	9.5	10	70	38	16.5	43	6	74	0.29
SB 40	RE020513	65	40	12.5	50	10.5	75	21.5	25	11.5	12.5	90	52	21	57	8	98	0.72
SB 50	RE020514	80	50	16.5	60	12.5	85	24	35	14	15	110	55	21	66	8	116	0.93
SB 60	RE020515	100	60	20.5	70	12.5	110	30	40	18	20	140	66	26	80	10	140	1.82

* 孔 B 用于 CRESA 以下型号“张紧装置组件”的安装: RE、FE、BE、ME、CEA、CEB

□ 孔 C 用于 VIB 以下型号“弹性组件”的安装: AR-P、AC-P、AD-P、TB、CR-P

* Bore B is used for the fixation of the CRESA tighteners type: RE, FE, BE, ME, CEA, CEB

□ Bores C are used for the fixation of the VIB elastic elements type: AR-P, AC-P, AD-P, TB, CR-P