

附件 / Accessories



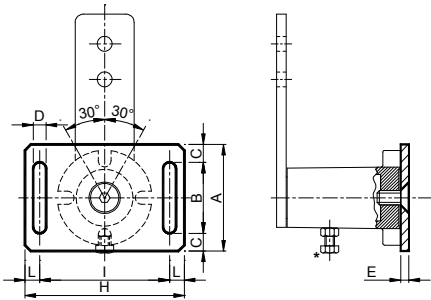
SU





ST

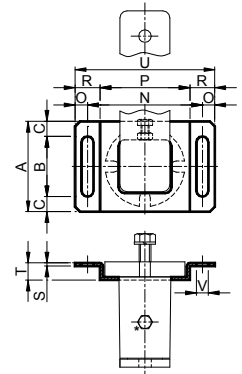
支架 – 型号: SU / Support – Type: SU

支架 – 型号: ST / Support – Type: ST



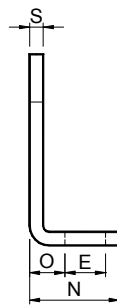
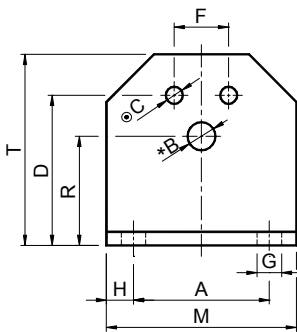
 使用夹具“SU”和“ST”，可能对“放射型”和“轴型”弹性组件进行双重调整。在以轴调整安装的情况下，有必要首先使用适当的螺钉(*)将张紧装置预加负荷，然后(沿着所选方向)使用支架上的空槽移动整个组件。

 The elastic element can be adjusted two ways radially and axially by means of the brackets “SU” and “ST”. When fitting with axial adjustment, the tensioner must be firstly preloaded by means of the screw (*) and then the whole unit can be moved (in the required direction) using the slots in the supporting element.




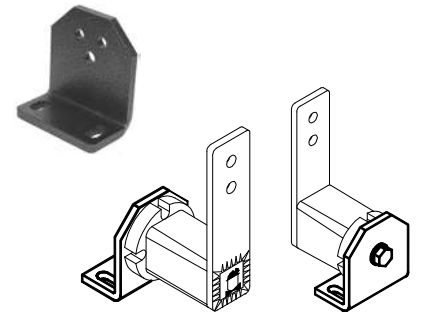
| 型号 Type | 编号 N° | 重量 Weight in Kg | A | B | C | D | E | H | I | L | N | O | P | S | T | V | 重量 Weight in Kg | 型号 Type | 编号 N° |
|------------|----------|-----------------------|-----|----|------|----|----|-----|-----|------|-----|------|-----|-----|------|----|-----------------------|------------|----------|
| SU 10 | RE011010 | 0.07 | 40 | 30 | 5 | 7 | 4 | 75 | 60 | 7.5 | 65 | 7.5 | 46 | 2 | 7.4 | 7 | 0.03 | ST 10 | RE011020 |
| SU 20 | RE011011 | 0.18 | 55 | 35 | 10 | 9 | 5 | 95 | 75 | 10 | 80 | 10 | 58 | 2 | 9 | 9 | 0.07 | ST 20 | RE011021 |
| SU 30 | RE011012 | 0.27 | 65 | 40 | 12.5 | 9 | 6 | 105 | 85 | 10 | 95 | 10 | 70 | 2.5 | 11.5 | 9 | 0.13 | ST 30 | RE011022 |
| SU 40 | RE011013 | 0.60 | 90 | 60 | 15 | 11 | 7 | 135 | 110 | 12.5 | 115 | 12.5 | 90 | 3 | 17 | 12 | 0.27 | ST 40 | RE011023 |
| SU 50 | RE011014 | 0.90 | 110 | 70 | 20 | 13 | 8 | 160 | 135 | 12.5 | 145 | 12.5 | 115 | 4 | 18 | 14 | 0.39 | ST 50 | RE011024 |
| SU 60 | RE011015 | 1.70 | 130 | 90 | 20 | 17 | 10 | 200 | 160 | 20 | 180 | 15 | 140 | 5 | 22 | 18 | 0.75 | ST 60 | RE011025 |

夹具 – 型号: SB / Support – Type: SB




 夹具 SB 用于简化弹性组件在机器上的安装。

 The bracket SB is used to facilitate the assembly of the elastic element on the machine.



| 型号 Type | 编号 N° | A | * □ | | D | E | F | G | H | M | N | O | R | S | T | 重量 Weight in kg | | |
|------------|----------|-----|------------|------|----|------|-----|------|----|------|------|-----|----|------|----|-----------------------|------------|------|
| | | | 尺寸 Size | B | | | | | | | | | | | | | 尺寸 Size | C |
| SB 10 | RE020510 | 30 | 10 | 6.5 | 20 | 5.5 | 35 | 13 | 10 | 7 | 7.5 | 45 | 30 | 11.5 | 27 | 4 | 46 | 0.09 |
| SB 20 | RE020511 | 40 | 20 | 8.5 | 30 | 6.5 | 44 | 13 | 12 | 7 | 7.5 | 55 | 32 | 13.5 | 34 | 5 | 58 | 0.17 |
| SB 30 | RE020512 | 50 | 30 | 10.5 | 40 | 8.5 | 55 | 15.5 | 20 | 9.5 | 10 | 70 | 38 | 16.5 | 43 | 6 | 74 | 0.29 |
| SB 40 | RE020513 | 65 | 40 | 12.5 | 50 | 10.5 | 75 | 21.5 | 25 | 11.5 | 12.5 | 90 | 52 | 21 | 57 | 8 | 98 | 0.72 |
| SB 50 | RE020514 | 80 | 50 | 16.5 | 60 | 12.5 | 85 | 24 | 35 | 14 | 15 | 110 | 55 | 21 | 66 | 8 | 116 | 0.93 |
| SB 60 | RE020515 | 100 | 60 | 20.5 | 70 | 12.5 | 110 | 30 | 40 | 18 | 20 | 140 | 66 | 26 | 80 | 10 | 140 | 1.82 |

 * 孔 B 用于 CRESA 以下型号“张紧装置组件”的安装: RE、FE、BE、ME、CEA、CEB

□ 孔 C 用于 VIB 以下型号“弹性组件”的安装: AR-P、AC-P、AD-P、TB、CR-P

 * Bore B is used for the fixation of the CRESA tighteners type: RE, FE, BE, ME, CEA, CEB

□ Bores C are used for the fixation of the VIB elastic elements type: AR-P, AC-P, AD-P, TB, CR-P