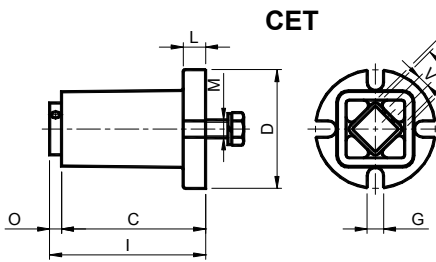
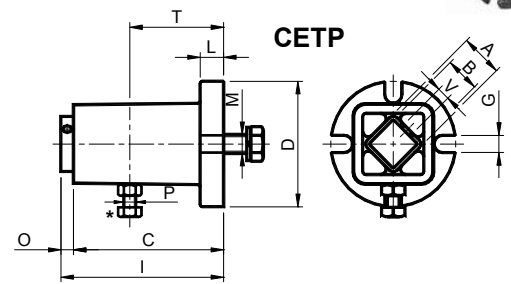


具预加负荷用螺钉(*)的基本弹性组件型号: CET e CETP (*) / *Basic elastic elements Type: CET and CETP with screw for preloading (*)*



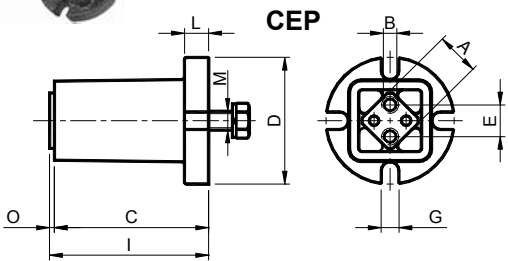
中国 CET e CETP 是与方形部件配合使用的基本弹性支撑。CETP 配有预加负荷系统 (*). 扭转角度 $\pm 30^\circ$. 工作温度从 -40°C 至 $+80^\circ\text{C}$.

英国 CET and CETP are elastic base supports for coupling with profiles with a square section. CETP are equipped with preloading system (*). Rotation angle $\pm 30^\circ$. Working temperature from -40°C to $+80^\circ\text{C}$.



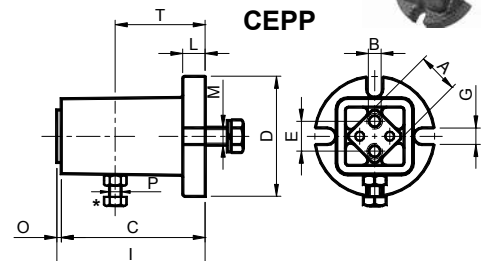
型号 Type	编号 N°	A	B	C	D	G	I	L	M	O	P	T	V	Nm 0°-30°		重量 Weight in Kg	型号 Type	编号 N°
														扭矩负载 Q 以 Nm 表示 Torque Q in Nm				
CET 10	RE010711	11	8 ^{+0.15} _{+0.00}	44	40	7	50	6	M 6	6	M 4	25	M 6	0 – 6.8	0.16	CETP 10	RE010781	
CET 20	RE010721	15	11 ^{+0.15} _{+0.00}	56	50	9	64	8	M 8	8	M 6	35	M 6	0 – 13.6	0.30	CETP 20	RE010791	
CET 30	RE010731	18	12 ^{+0.15} _{+0.00}	69	60	9	77	10	M10	8	M 6	40	M 6	0 – 34.0	0.46	CETP 30	RE010801	
CET 40	RE010741	27	22 ^{+0.15} _{+0.00}	96	80	11	106	15	M12	10	M 8	60	M 8	0 – 103.0	1.40	CETP 40	RE010811	
CET 50	RE010751	38	30 ^{+0.15} _{+0.00}	125	100	13	125	15	M16	10	M 8	80	M 8	0 – 280.0	2.50	CETP 50	RE010821	
CET 60	RE010761	45	35 ^{+0.15} _{+0.00}	182	120	13	196	18	M20	14	M10	115	M10	0 – 574.0	4.30	CETP 60	RE010831	
CET 70	RE010771	50	40 ^{+0.15} _{+0.00}	180	130	17	195	20	M24	15	M12	115	M10	0 – 987.5	5.50	CETP 70	RE010841	

具预加负荷用螺钉(*)的基本弹性组件 型号: CEP e CEPP (*) / *Basic elastic elements Type: CEP and CEPP with screw for preloading (*)*

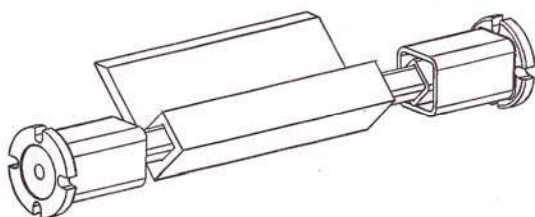


中国 CEP e CEPP 是通过螺钉与特定机械结构配合使用的基本弹性支撑。CEPP 配有预加负荷系统(*) 扭转角度 $\pm 30^\circ$. 工作温度从 -40°C 至 $+80^\circ\text{C}$.

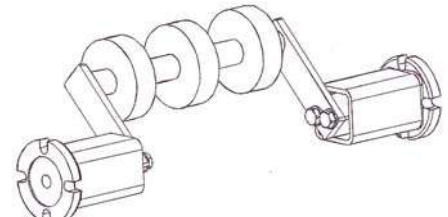
英国 CEP and CEPP are elastic base supports for coupling to mechanical parts with screws. CEPP are equipped with preloading system (*). Rotation angle $\pm 30^\circ$. Working temperature from -40°C to $+80^\circ\text{C}$.



型号 Type	编号 N°	A	B	C	D	E	G	I	L	M	O	P	T	Nm 0°-30°		重量 Weight in Kg	型号 Type	编号 N°
														扭矩负载 Q 以 Nm 表示 Torque Q in Nm				
CEP 20	RE010722	15	M 6x15	56	50	10	9	57	8	M 8	1	M 6	35	0 – 13.6	0.30	CEPP 20	RE010792	
CEP 30	RE010732	18	M 6x15	69	60	12	9	70	10	M10	1	M 6	40	0 – 34.0	0.46	CEPP 30	RE010802	
CEP 40	RE010742	27	M10x30	96	80	20	11	97	15	M12	1	M 8	60	0 – 103.0	1.40	CEPP 40	RE010812	
CEP 50	RE010752	40	M12x30	125	100	25	13	126	15	M16	1	M 8	80	0 – 280.0	2.50	CEPP 50	RE010822	
CEP 60	RE010762	45	M14x35	182	120	35	13	184	18	M20	2	M10	115	0 – 574.0	4.30	CEPP 60	RE010832	
CEP 70	RE010772	50	M12x40	180	130	40	17	182	20	M24	2	M12	115	0 – 987.5	5.50	CEPP 70	RE010842	



应用实例 1: CET 50 / Example of application 1: CET 50



应用实例 2: CEP 50 / Example of application 2: CEP 50