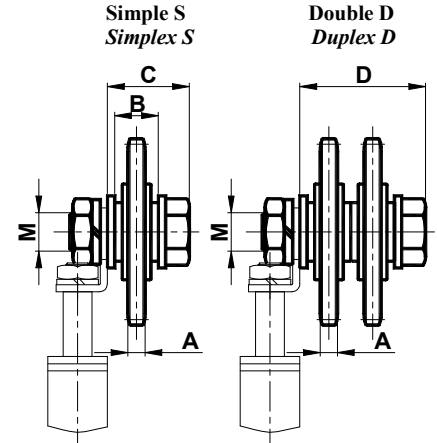
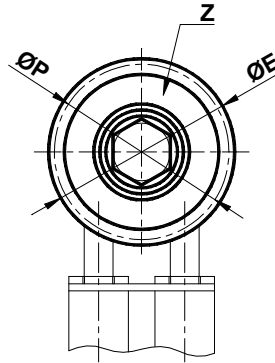


Accessoires pour tendeurs de chaîne type P / Accessories for chain tighteners type P

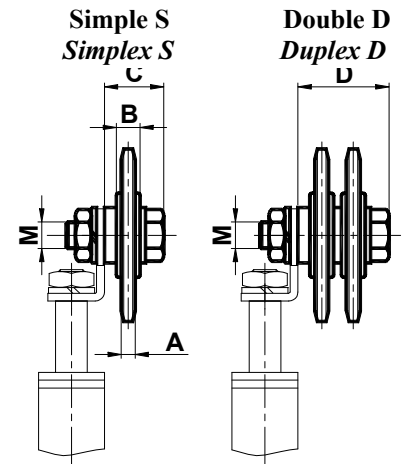
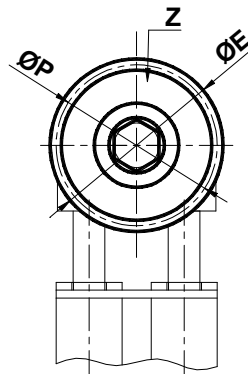


Pignon en acier avec roulement à base élargie.  
Vitesse de travail ≤60 m/min.  
Température de fonctionnement ≤100°C.

Steel pinion with enlarged bearing.  
Operating speed ≤60 m/min.  
Operating temperature ≤100°C.

| Type<br>Type | code<br>S | code<br>D | A    | B    | C    | D    | ØE    | M   | ØP    | Z  | Poids Weight<br>[Kg] |      |
|--------------|-----------|-----------|------|------|------|------|-------|-----|-------|----|----------------------|------|
|              |           |           |      |      |      |      |       |     |       |    | S                    | D    |
| P1 3/8"      | AS010291  | /         | 5.3  | 18.3 | 31.3 | /    | 68.0  | M16 | 63.90 | 21 | 0.25                 | /    |
| P1 1/2"      | AS010292  | /         | 7.2  | 18.3 | 31.3 | /    | 77.8  | M16 | 73.14 | 18 | 0.35                 | /    |
| P2 3/8"      | /         | AS010301  | 5.3  | 18.3 | /    | 49.6 | 68.0  | M16 | 63.90 | 21 | /                    | 0.40 |
| P2 1/2"      | /         | AS010302  | 7.2  | 18.3 | /    | 49.6 | 77.8  | M16 | 73.14 | 18 | /                    | 0.60 |
| P2 5/8"      | AS010293  | /         | 9.1  | 18.3 | 31.3 | /    | 93.0  | M16 | 86.39 | 17 | 0.50                 | /    |
| P2 3/4"      | AS010294  | /         | 11.1 | 18.3 | 31.3 | /    | 99.8  | M16 | 91.63 | 15 | 0.65                 | /    |
| P3 5/8"      | /         | AS010303  | 9.1  | 18.3 | /    | 49.6 | 93.0  | M16 | 86.39 | 17 | /                    | 0.89 |
| P3 3/4"      | /         | AS010304  | 11.1 | 18.3 | /    | 49.6 | 99.8  | M16 | 91.63 | 15 | /                    | 1.15 |
| P3 1"        | AS010295  | AS010305  | 16.2 | 17.7 | 36.7 | 68.4 | 109.0 | M20 | 94.14 | 12 | 0.98                 | 1.76 |

Accessoires pour tendeurs de chaîne type C / Accessories for chain tighteners type C



Pignon en acier avec roulement standard.  
Température de fonctionnement ≤100°C.  
Vitesse de travail ≤60 m/min.

Steel pinion with standard bearing.  
Operating temperature ≤100°C.  
Operating speed ≤60 m/min.

| Type<br>Type | code<br>S | code<br>D | A    | B  | C  | D    | ØE    | M   | ØP     | Z  | Poids Weight<br>[Kg] |      |
|--------------|-----------|-----------|------|----|----|------|-------|-----|--------|----|----------------------|------|
|              |           |           |      |    |    |      |       |     |        |    | S                    | D    |
| C1 3/8"      | AS010440  | /         | 5.3  | 9  | 20 | /    | 49.3  | M10 | 45.81  | 15 | 0.10                 | /    |
| C1 1/2"      | AS010441  | /         | 7.2  | 9  | 20 | /    | 65.5  | M10 | 61.09  | 15 | 0.19                 | /    |
| C2 3/8"      | /         | AS010450  | 5.3  | 9  | /  | 31   | 49.3  | M10 | 45.81  | 15 | /                    | 0.22 |
| C2 1/2"      | /         | AS010451  | 7.2  | 9  | /  | 33   | 65.5  | M10 | 61.09  | 15 | /                    | 0.36 |
| C2 5/8"      | AS010442  | /         | 9.1  | 12 | 25 | /    | 83.0  | M12 | 76.36  | 15 | 0.35                 | /    |
| C2 3/4"      | AS010443  | /         | 11.1 | 12 | 25 | /    | 99.8  | M12 | 91.63  | 15 | 0.70                 | /    |
| C3 5/8"      | /         | AS010452  | 9.1  | 12 | /  | 42   | 83.0  | M12 | 76.36  | 15 | /                    | 0.58 |
| C3 3/4"      | /         | AS010453  | 11.1 | 12 | /  | 44.5 | 99.8  | M12 | 91.63  | 15 | /                    | 1.24 |
| C3 1"        | AS010444  | AS010454  | 16.2 | 15 | 34 | 66   | 117.0 | M20 | 106.12 | 13 | 1.12                 | /    |