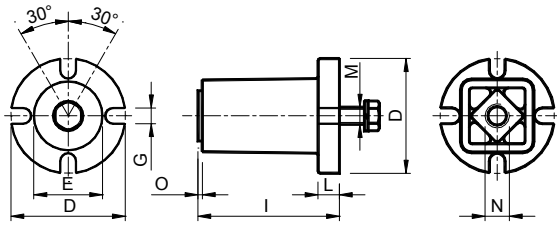


### 具预加负荷用螺钉基本弹性组件- 型号: CEA e CEAP (\*) /

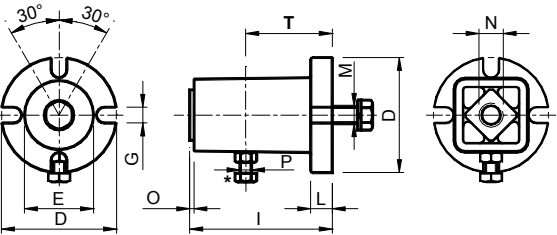
#### Basic elastic elements – Type: CEA and CEAP with screw for preloading (\*)


**CEA**


CEA 和 CEAP 是基本弹性支撑，与在产品目录中显示的可互换的附件一并使用，或者根据需要与其他另外设计的特别部件组合。为了便利安装、拆除和调整的操作，CEAP 配有预加负荷系统(□)。

扭转角度  $\pm 30^\circ$

工作温度从  $-40^\circ\text{C}$  至  $+80^\circ\text{C}$


**CEAP**


CEA and CEAP are basic elastic supports either to utilize with the interchangeable accessories represented in the catalogue, or to assemble themselves with special particulars that have to be realized separately on the different requests.

CEAP are equipped with preloading system (□) in order to facilitate the mounting, dismounting and regulation operations.

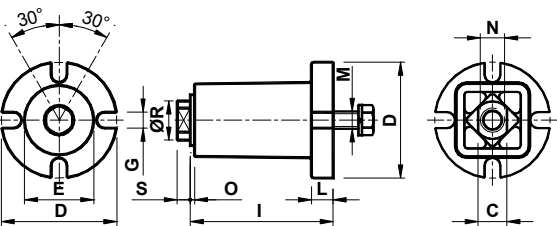
Rotation angle  $\pm 30^\circ$

Operating temperature from  $-40^\circ\text{C}$  to  $+80^\circ\text{C}$ .

型号 Type	编号 N°	Ø D	Ø E	G	I	L	M	N	O	□ P	T	Nm 0°-30°		重量 Weight in Kg	型号 Type	编号 N°
												扭矩负载 Q 以 Nm 表示 Torque Q in Nm				
CEA 10	RE010570	40	20	7	51	6	M 6	M 6	1	M 4	25	0 – 6.8	0.19	CEAP 10	RE010640	
CEA 20	RE010580	50	30	9	63	8	M 8	M 8	1	M 6	35	0 – 13.6	0.34	CEAP 20	RE010650	
CEA 30	RE010590	60	35	9	78	10	M10	M10	1	M 6	40	0 – 34.0	0.52	CEAP 30	RE010660	
CEA 40	RE010600	80	48	11	107	15	M12	M12	1	M 8	60	0 – 103.0	1.50	CEAP 40	RE010670	
CEA 50	RE010610	100	62	13	138	15	M16	M16	1	M 8	80	0 – 280.0	3.10	CEAP 50	RE010680	
CEA 60	RE010620	120	80	13	199	18	M20	M20	2	M10	115	0 – 574.0	4.90	CEAP 60	RE010690	
CEA 70	RE010630	130	78	17	209	20	M24	M24	2	M12	115	0 – 987.5	6.00	CEAP 70	RE010700	

### 预加负荷用螺钉的基本弹性组件 – 型号: CEB e CEBP (\*) /

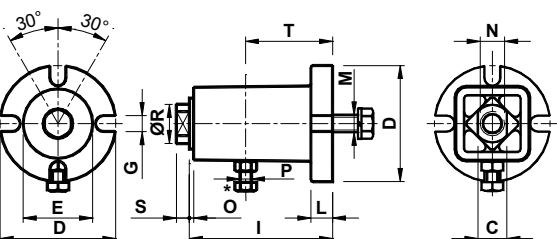
#### Basic elastic elements – Type: CEB and CEBP with screw for preloading (\*)


**CEB**


CEB 和 CEBP 是基本弹性支撑，与在产品目录中显示的可互换的附件一并使用，或者根据需要与其他另外设计的特别部件组合。为了便利安装、拆除和调整的操作，CEBP 配有预加负荷系统(\*)。

扭转角度  $\pm 30^\circ$ 。

工作温度从  $-40^\circ\text{C}$  至  $+80^\circ\text{C}$ 。


**CEBP**


CEB and CEBP are basic elastic supports either to utilize with the interchangeable accessories represented in the catalogue, or to assemble themselves with special particulars that have to be realized separately on the different requests.

CEBP are equipped with preloading system (\*) in order to facilitate the mounting, dismounting and regulation operations.

Rotation angle  $\pm 30^\circ$

Operating temperature from  $-40^\circ\text{C}$  to  $+80^\circ\text{C}$ .

型号 Type	编号 N°	C	Ø D	Ø E	G	I	L	M	N	O	□ P	Ø R	S	T	Nm 0°-30°		重量 Weight in Kg	型号 Type	编号 N°
															扭矩负载 Q 以 Nm 表示 Torque Q in Nm				
CEB 10	RE010710	9.5	40	20	7	50	6	M 6	M 6	1	M 4	11	5	25	0 – 6.8	0.19	CEBP 10	RE010780	
CEB 20	RE010720	12	50	30	9	62	8	M 8	M 8	1	M 6	15	5	35	0 – 13.6	0.34	CEBP 20	RE010790	
CEB 30	RE010730	14.5	60	35	9	77	10	M10	M10	1	M 6	18	7	40	0 – 34.0	0.52	CEBP 30	RE010800	
CEB 40	RE010740	20	80	48	11	106	15	M12	M12	1	M 8	27	9	60	0 – 103.0	1.50	CEBP 40	RE010810	
CEB 50	RE010750	26	100	62	13	137	15	M16	M16	1	M 8	38	11	80	0 – 280.0	3.10	CEBP 50	RE010820	
CEB 60	RE010760	34	120	80	13	198	18	M20	M20	2	M10	45	14	115	0 – 574.0	4.90	CEBP 60	RE010830	
CEB 70	RE010770	40	130	78	17	209	20	M24	M24	2	M12	50	19	115	0 – 987.5	6.00	CEBP 70	RE010840	