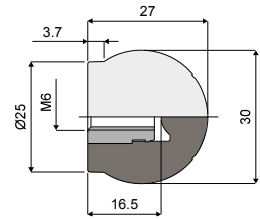
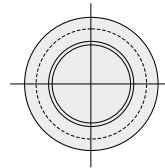


Ball handle - Part. T82 / Impugnatura sferica - Part. T82



Type/Tipo

T82

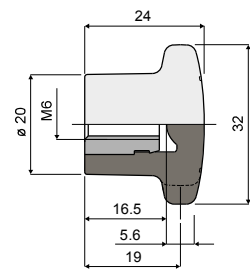
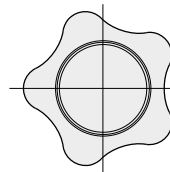
Code/Codice

CPA00274

MATERIALS: Handle made of reinforced polyamide black colour; threaded bushing made of nickel plated brass.

MATERIALI: Impugnatura in poliammide rinforzata colore nero; boccola filettata in ottone nichelato.

5 lobe knob - Part. T83 / Volantino 5 lobi - Part. T83



Type/Tipo

T83

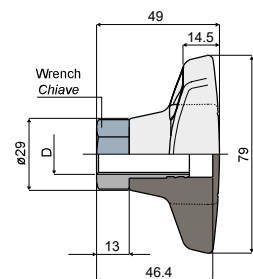
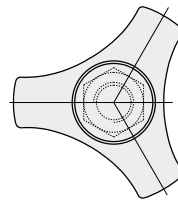
Code/Codice

CPA00270

MATERIALS: Handle made of reinforced polyamide black colour; threaded bushing made of nickel plated brass.

MATERIALI: Impugnatura in poliammide rinforzata colore nero; boccola filettata in ottone nichelato.

3 lobe knob - Part. T50 / Volantino 3 lobi - Part. T50



Type/Tipo

T50A

Code/Codice

CPA00279

D

M12

Wrench/Chiave

19

T50B

CP000280

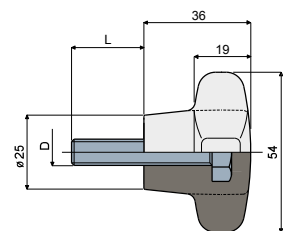
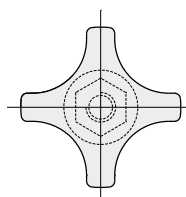
M16

24

MATERIALS: Handle made of reinforced polyamide black colour; threaded bushing made of nickel plated brass.

MATERIALI: Impugnatura in poliammide rinforzata colore nero; boccola filettata in ottone nichelato.

4 lobe knob (reinforced type) - Part. D94 / Volantino 4 lobi (tipo rinforzato) - Part. D94



Type/Tipo

D94A

Code/Codice

CP000282

D (mm)

M8

L (mm)

22

D94B

CP000283

M10

22

MATERIALS: Knob made of reinforced polyamide black colour; bolt made of stainless steel AISI 304.

MATERIALI: Volantino in poliammide rinforzata colore nero; vite in acciaio inox AISI 304.

FEATURES: Accessory to be used with head Part.D23.

CARATTERISTICHE: Accessorio applicabile alla testina Part. D23.