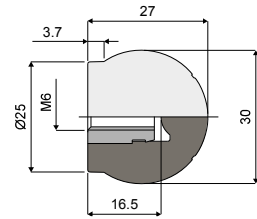
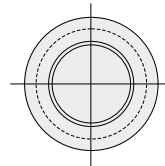


Ball handle - Part. T82 / Impugnatura sferica - Part. T82



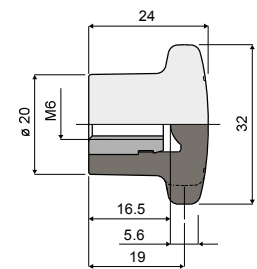
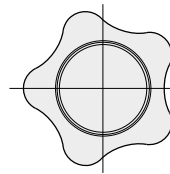
Type/Tipo
T82

Code/Codice
CPA00274

MATERIALS: Handle made of reinforced polyamide black colour; threaded bushing made of nickel plated brass.

MATERIALI: Impugnatura in poliammide rinforzata colore nero; boccia filettata in ottone nichelato.

5 lobe knob - Part. T83 / Volantino 5 lobi - Part. T83



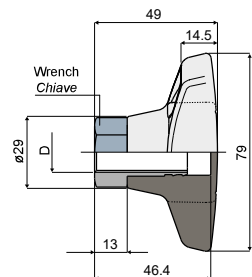
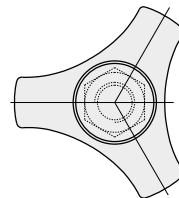
Type/Tipo
T83

Code/Codice
CPA00270

MATERIALS: Handle made of reinforced polyamide black colour; threaded bushing made of nickel plated brass.

MATERIALI: Impugnatura in poliammide rinforzata colore nero; boccia filettata in ottone nichelato.

3 lobe knob - Part. T50 / Volantino 3 lobi - Part. T50

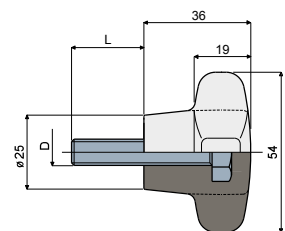
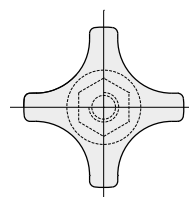


Type/Tipo	Code/Codice	D	Wrench/Chiave
T50A	CPA00279	M12	19
T50B	CP000280	M16	24

MATERIALS: Handle made of reinforced polyamide black colour; threaded bushing made of nickel plated brass.

MATERIALI: Impugnatura in poliammide rinforzata colore nero; boccia filettata in ottone nichelato.

4 lobe knob (reinforced type) - Part. D94 / Volantino 4 lobi (tipo rinforzato) - Part. D94



Type/Tipo	Code/Codice	D (mm)	L (mm)
D94A	CP000282	M8	22
D94B	CP000283	M10	22

MATERIALS: Knob made of reinforced polyamide black colour; bolt made of stainless steel AISI 304.
FEATURES: Accessory to be used with head Part.D23.

MATERIALI: Volantino in poliammide rinforzata colore nero; vite in acciaio inox AISI 304.
CARATTERISTICHE: Accessorio applicabile alla testina Part. D23.