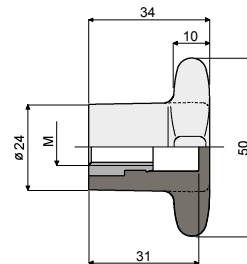
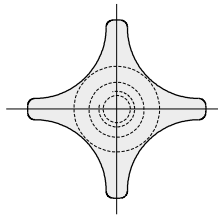


4 lobe knob - Part. D26
Volantino a 4 lobi - Part. D26



Type/Tipo	Code/Codice	M
D26A	CPA00264	M8
D26	CP000264	M10
D26B	CPA00265	M12

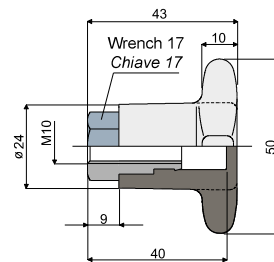
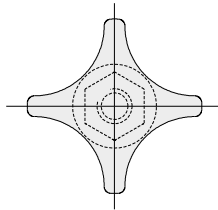
MATERIALS: Knob made of reinforced polyamide black colour; threaded bushing made of nickel plated brass.

FEATURES: Accessory to be used with heads Part.D21 and D66.

MATERIALI: Volantino in poliammide rinforzata colore nero; boccola filettata in ottone nichelato.

CARATTERISTICHE: Accessorio da applicare alle testine Part. D21 e D66.

4 lobe knob - Part. D27
Volantino a 4 lobi - Part. D27



Type/Tipo	Code/Codice
D27	CP000265

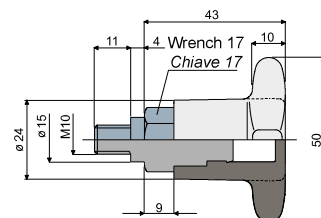
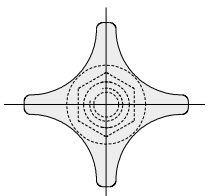
MATERIALS: Knob made of reinforced polyamide black colour; threaded bushing made of nickel plated brass.

FEATURES: Accessory to be used with heads Part.D21 and D66.

MATERIALI: Volantino in poliammide rinforzata colore nero; boccola filettata in ottone nichelato.

CARATTERISTICHE: Accessorio da applicare alle testine Part. D21 e D66.

4 lobe knob - Part. D28
Volantino a 4 lobi - Part. D28



Type/Tipo	Code/Codice
D28	CP000266

MATERIALS: Knob made of reinforced polyamide black colour; threaded bushing made of nickel plated brass.

FEATURES: Accessory to be used with heads Part.D23.

MATERIALI: Volantino in poliammide rinforzata colore nero; boccola filettata in ottone nichelato.

CARATTERISTICHE: Accessorio da applicare alle testine Part. D23.