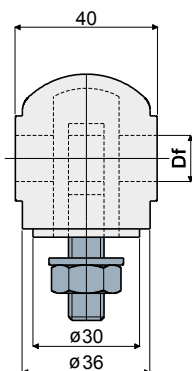
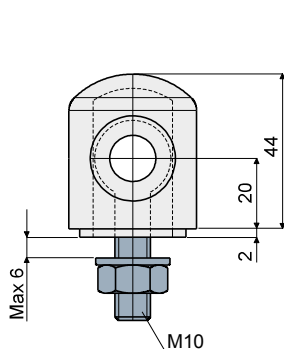


**Head for bracket - Part. D22**  
**Testina per supporto - Part. D22**



Type Tipo	Code Codice	Df Bore for pin of Foro per perno da (mm)
D22A	CP000153	12
D22B	CP000154	14
D22C	CP000155	16

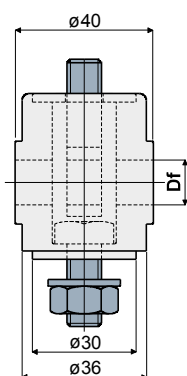
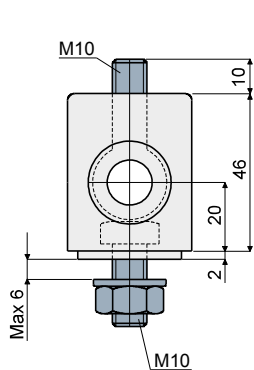
**MATERIALS:** Head made of reinforced polyamide black colour; eyebolt, nut and washer made of stainless steel AISI 304.

**FEATURES:** To be used with bracket Part.D09, D20, D42, Q41, Q42, Q86. Max tightening torque 4 Kg-m.

**MATERIALI:** Testina in poliammide rinforzata colore nero; tirante ad occhio, dado e rosetta in acciaio inox AISI 304.

**CARATTERISTICHE:** Da applicare al supporto Part. D09, D20, D42, Q41, Q42, Q86. Coppia massima di serraggio 4 Kg-m.

**Head for bracket - Part. D21**  
**Testina per supporto - Part. D21**



Type Tipo	Code Codice	Df Bore for pin of Foro per perno da (mm)
D21A	CP000156	12
D21B	CP000157	14
D21C	CP000158	16

**MATERIALS:** Head made of reinforced polyamide black colour; eyebolt, nut and washer made of stainless steel AISI 304.

**FEATURES:** To be used with bracket Part.D09, D20, D42, Q41, Q42, Q86. Max tightening torque 4 Kg-m.

**MATERIALI:** Testina in poliammide rinforzata colore nero; tirante ad occhio, dado e rosetta in acciaio inox AISI 304.

**CARATTERISTICHE:** Da applicare al supporto Part. D09, D20, D42, Q41, Q42, Q86. Coppia massima di serraggio 4 Kg-m.