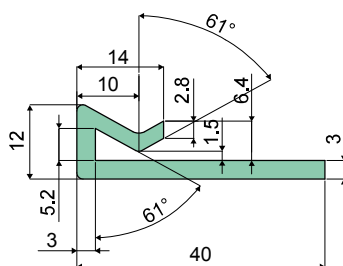


Extruded profile supplied in coils of 50/60 Mt. for plates from 2 to 4 mm - Part. T61
Estruso in rotoli da 50/60 Mt. per lamiere da 2 a 4 mm - Part. T61

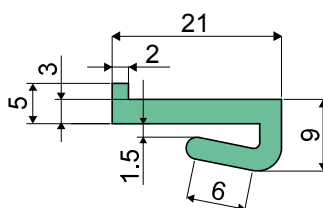


Type/Tipo	Code/Codice
T61	CPB00611

UK MATERIALS: Extruded UHMWPE green colour.
BOX QUANTITY: This item is sold in Mt. - Min. 50 Mt.

IT MATERIALI: Estruso in UHMWPE colore verde.
CONFEZIONE: Articolo venduto a Mt. - min. 50 Mt.

Extruded profile supplied in coils of 60 Mt. for plates from 2 to 4 mm - Part. T62
Estruso in rotoli da 60 Mt. per lamiere da 2 a 4 mm - Part. T62

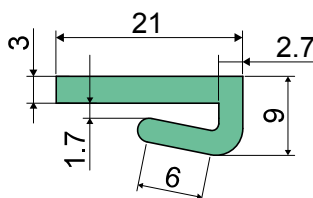


Type/Tipo	Code/Codice
T62	CPB00612

UK MATERIALS: Extruded UHMWPE green colour.
BOX QUANTITY: This item is sold in Mt. - Min. 60 Mt.

IT MATERIALI: Estruso in UHMWPE colore verde.
CONFEZIONE: Articolo venduto a Mt. - min. 60 Mt.

Extruded profile supplied in coils of 60 Mt. for plates from 2 to 4 mm - Part. T63
Estruso in rotoli da 60 Mt. per lamiere da 2 a 4 mm - Part. T63



Type/Tipo	Code/Codice
T63	CPB00613

UK MATERIALS: Extruded UHMWPE green colour.
BOX QUANTITY: This item is sold in Mt. - Min. 60 Mt.

IT MATERIALI: Estruso in UHMWPE colore verde.
CONFEZIONE: Articolo venduto a Mt. - min. 60 Mt.