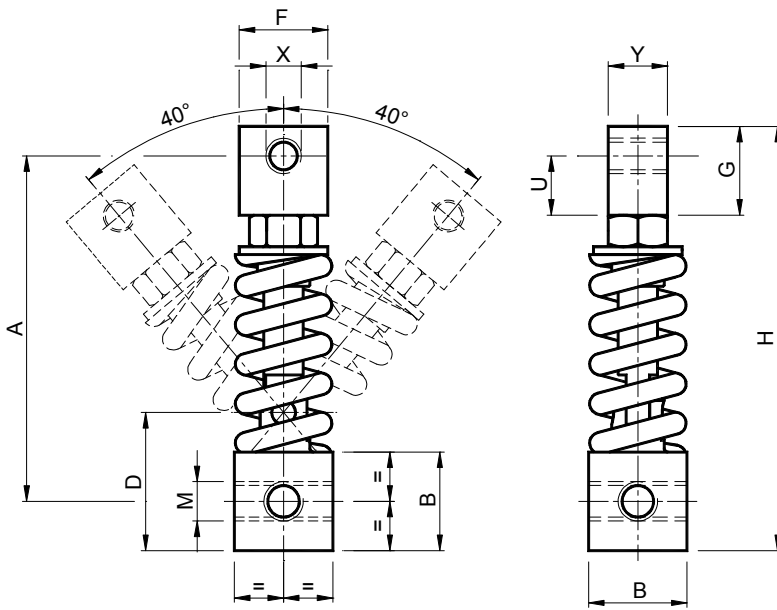


Eléments élastiques **ARCO** – Type: **AB (±40°)** / *ARCO Elastic elements – Type: AB (±40°)*



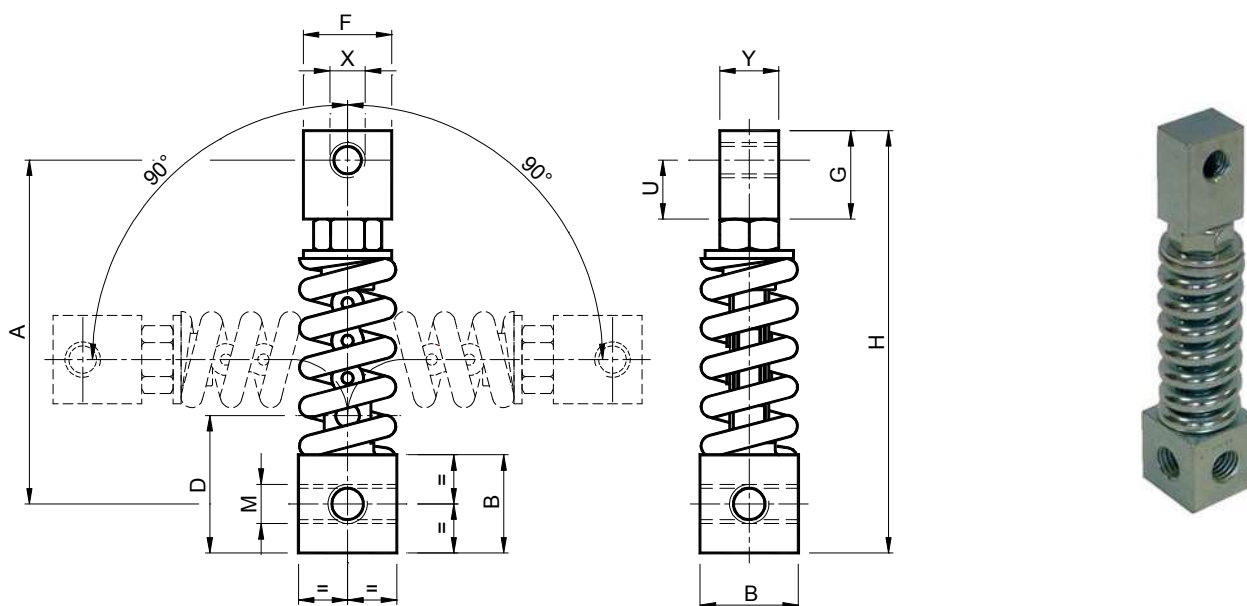
MATERIAUX Acier. Goupille de rotation en laiton.
TRAITEMENTS Zingage blanc.
UTILISATION Angle de rotation ± 40°.
 Température de fonctionnement de -30°C à +120°C.

MATERIALS Steel. Rotation pin made of brass.
TREATMENTS White galvanization.
USE Rotation angle ± 40°.
 Working temperature from -30°C to +120°C.



		±40°												
Type Type	Code n°	A	B	D	F	G	H	M	U	X	Y	Newton 0° ÷ 40°	Poids Weight Kg	
AB 10-8	AR070280	80	25	35	20	30	102.5	M8	20	M8	15	0 ÷ 90	0.24	
AB 10-10	AR070285	80	25	35	20	30	102.5	M8	20	M10	15	0 ÷ 90	0.24	
AB 20-10	AR070290	100	25	35	20	30	122.5	M10	20	M10	15	0 ÷ 135	0.31	
AB 20-16	AR070295	100	25	35	30	30	122.5	M10	20	M16	15	0 ÷ 135	0.33	
AB 30-10	AR070300	100	25	35	20	30	122.5	M12	20	M10	15	0 ÷ 275	0.31	
AB 30-16	AR070305	100	25	35	30	30	122.5	M12	20	M16	15	0 ÷ 275	0.33	
AB 40-12	AR070310	130	35	50	30	35	160	M16	22.5	M12	20	0 ÷ 750	0.80	
AB 40-16	AR070315	130	35	50	30	35	160	M16	22.5	M16	20	0 ÷ 750	0.78	
AB 50-16	AR070320	175	50	70	45	45	215	M20	30	M16	30	0 ÷ 1400	2.77	
AB 50-20	AR070325	175	50	70	45	45	215	M20	30	M20	30	0 ÷ 1400	2.75	
AB 60-20	AR070330	220	70	95	50	50	270	M24	35	M20	35	0 ÷ 2360	6.30	

Eléments élastiques **ARCO** – Type: **ABN ($\pm 90^\circ$)** / *ARCO Elastic elements – Type: ABN ($\pm 90^\circ$)*



MATERIAUX Acier.

TRAITEMENTS Zingage blanc.

UTILISATION Angle de rotation $\pm 90^\circ$.

Température de fonctionnement de -30°C à $+120^\circ\text{C}$.

MATERIALS Steel.

TREATMENTS White galvanization.

USE Rotation angle $\pm 90^\circ$.

Working temperature from -30°C to $+120^\circ\text{C}$.

$\pm 90^\circ$													
Type Type	Code n°	A	B	D	F	G	H	M	U	X	Y	Newton 0° ÷ 90°	Poids Weight Kg
ABN 10-8	AR070350	80	25	35	20	30	102.5	M8	20	M8	15	0 ÷ 90	0.24
ABN 10-10	AR070355	80	25	35	20	30	102.5	M8	20	M10	15	0 ÷ 90	0.24
ABN 20-10	AR070360	100	25	35	20	30	122.5	M10	20	M10	15	0 ÷ 135	0.31
ABN 20-16	AR070365	100	25	35	30	30	122.5	M10	20	M16	15	0 ÷ 135	0.33
ABN 30-10	AR070370	100	25	35	20	30	122.5	M12	20	M10	15	0 ÷ 275	0.31
ABN 30-16	AR070375	100	25	35	30	30	122.5	M12	20	M16	15	0 ÷ 275	0.33
ABN 40-12	AR070380	130	35	50	30	35	160	M16	22.5	M12	20	0 ÷ 750	0.80
ABN 40-16	AR070385	130	35	50	30	35	160	M16	22.5	M16	20	0 ÷ 750	0.78
ABN 50-16	AR070390	175	50	70	45	45	215	M20	30	M16	30	0 ÷ 1400	2.77
ABN 50-20	AR070395	175	50	70	45	45	215	M20	30	M20	30	0 ÷ 1400	2.75
ABN 60-20	AR070400	220	70	95	50	50	270	M24	35	M20	35	0 ÷ 2360	6.30