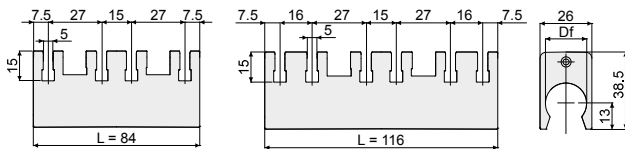
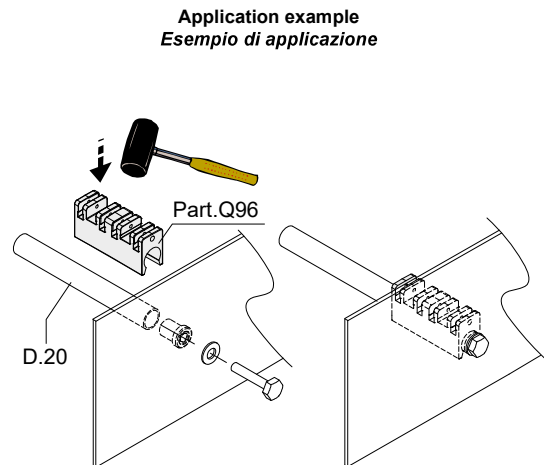


Spacer for chain return (open version, for round tubes) - Part. Q96
Distanziale per ritorno catena (versione aperta, per tubi tondi) - Part. Q96

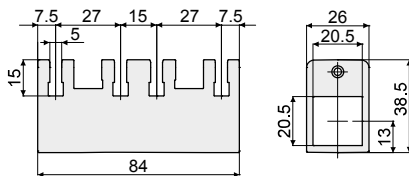


Type/Tipo	Code/Codice	Df Bore for round tubes of Foro per tubi tondi da (mm)	L
Q96A	CPB00594	20	84
Q96B	CPB00595	20	116

- MATERIALS:** Spacer in polyamide black colour.
- FEATURES:** To be used together with the sliding profile Part.Q99.
- MATERIALI:** Distanziale in poliammide colore nero.
- CARATTERISTICHE:** Da utilizzare con il profilo di scorrimento Part. Q99.

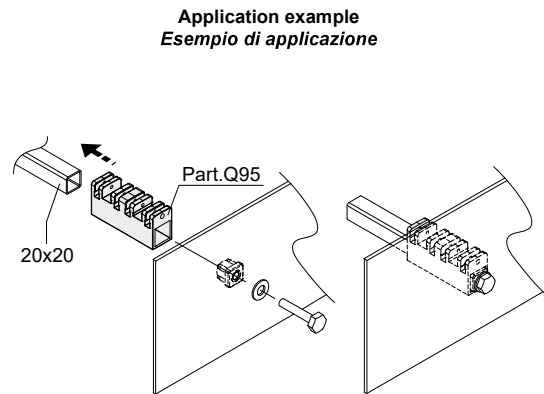


Spacer for chain return (closed version, for square tubes) - Part. Q95
Distanziale per ritorno catena (versione chiusa, per tubi quadri) - Part. Q95

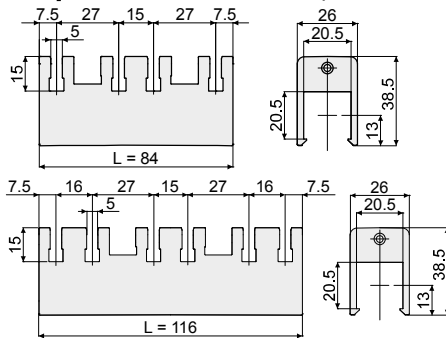


Type/Tipo	Code/Codice
Q95	CPB00596

- MATERIALS:** Spacer in polyamide black colour.
- FEATURES:** To be used together with the sliding profile Part.Q99.
- MATERIALI:** Distanziale in poliammide colore nero.
- CARATTERISTICHE:** Da utilizzare con il profilo di scorrimento Part. Q99.



Spacer for chain return (open version, for square tubes) - Part. Q97
Distanziale per ritorno catena (versione aperta, per tubi quadri) - Part. Q97



Type/Tipo	Code/Codice	Df Bore for square tubes of Foro per tubi quadri da (mm)	L
Q97A	CPB00597	20x20	84
Q97B	CPB00598	20x20	116

- MATERIALS:** Spacer in polyamide black colour.
- FEATURES:** To be used together with the sliding profile Part.Q99.
- MATERIALI:** Distanziale in poliammide colore nero.
- CARATTERISTICHE:** Da utilizzare con il profilo di scorrimento Part. Q99.

