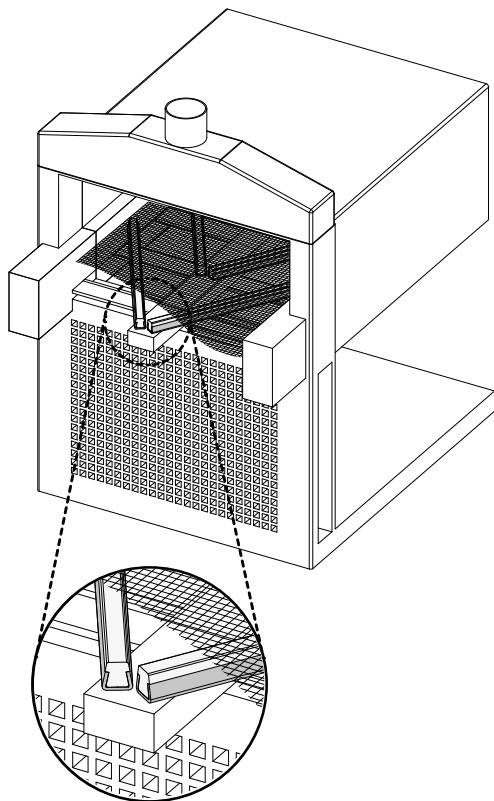


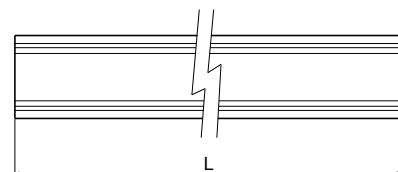
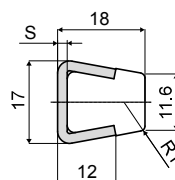
Guide rail for high temperatures (with metal profile) - Part. T77
Guida piatta per alte temperature (con profilo metallico) - Part. T77

Application example
Esempio di applicazione



Temperatura di esercizio continuo
FINO A 260°C

Operating temperatures
UP TO 260°C



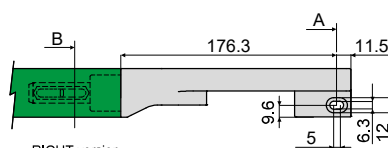
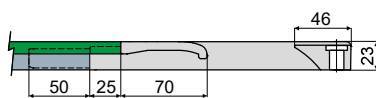
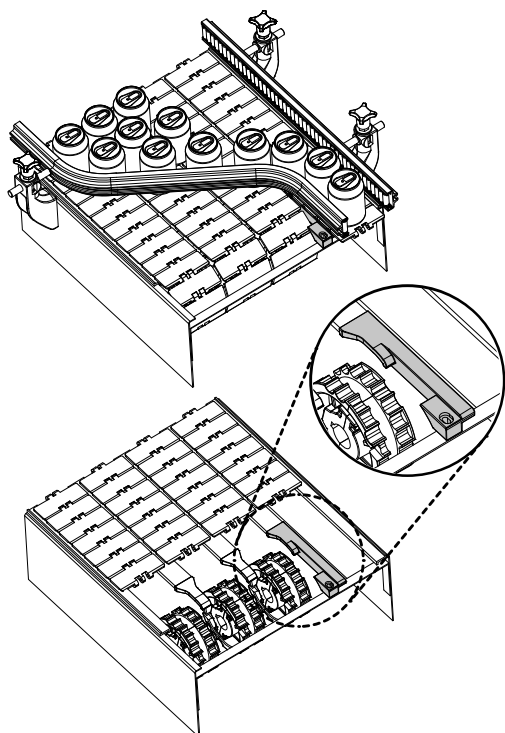
Type/Tipo	Code/Codice	S	L
T77A	CPB00496	1,5	3 Mt.
T77B	CPC00497	2	3 Mt.

UK MATERIALS: Guide profile in PTFE (Teflon) natural colour; metal profile in stainless steel AISI 304. **FEATURES:** To be used in every application where the resistance to the high temperatures is needed; for example: ovens, fryers, filling areas with high temperature, steam rooms, kitchens etc. Supplied in 3 meters lengths.

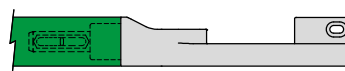
IT MATERIALI: Profilo guida in PTFE (Teflon) naturale; profilo metallico in acciaio inox AISI 304. **CARATTERISTICHE:** Utilizzabile in ogni contesto in cui sia richiesta la resistenza all'aumento delle temperature; es: forni, friggitorici, zone di riempimento a caldo, camere a vapore, cucine, ecc. Fornito in barre da 3 Mt.

Chain inlet guide shoe - Part. Q44
Pattino per guida catena - Part. Q44

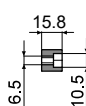
Application example
Esempio di applicazione



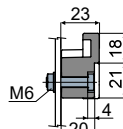
RIGHT version
Versione DESTRA



LEFT version
Versione SINISTRA



Section B
Sezione B



Section A
Sezione A



Version Versione	Type Tipo	Code Codice
Right Destra	Q44A	CPB00582
Left Sinistra	Q44B	CPB00583

UK MATERIALS: Shoe in black polyamide. **FEATURES:** To be assembled near to the idler wheels to drive the chain on the transport guides: Part.T81, T84, C13 (excluding versions with aluminium metal profile).

IT MATERIALI: Pattino in poliammide colore nero. **CARATTERISTICHE:** Da applicare in corrispondenza delle ruote di rinvio per convogliare la catena sulle guide di trasporto per Part. T81, T84, C13 (escluse le versioni con profilo metallico in alluminio).