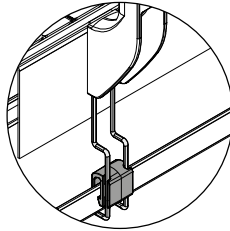
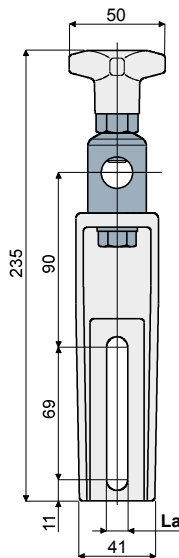


Guide rail bracket (with metal adjustable head) - Part. DX18
Supporto portaguida (con testina orientabile in metallo) - Part. DX18

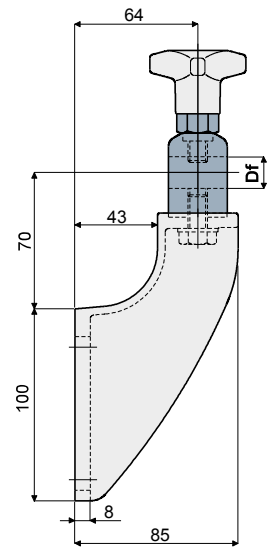


Presetting for drip tray support
Predisposizione per sostegno raccogliitore

La (9 mm)



La (11 mm)



Df
Bore for pin of
Foro per perno da
(mm)

Type/Tipo
DX18A

Code/Codice
CP000132

Type/Tipo
DX18B

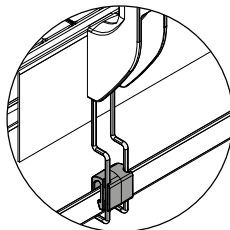
Code/Codice
CP000134

14 - 16

MATERIALS: Bracket and knob made out of reinforced polyamide black colour; head made out of stainless steel AISI 304; hexagonal insert made out of nickel plated brass; screw and washer made out of stainless steel AISI 304.
FEATURES: Possibility to use pins with diameter 14 and 16 mm. Max tightening torque 4 Kg·m.

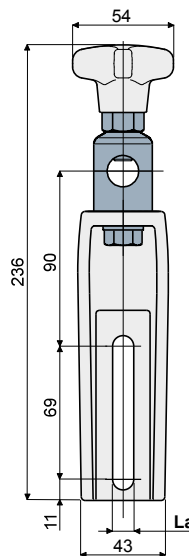
MATERIALI: Supporto e volantino in poliammide rinforzata colore nero; testina in acciaio inox AISI 304; inserto esagonale in ottone nichelato; vite e rosetta in acciaio inox AISI 304.
CARATTERISTICHE: Possibilità di utilizzare perni di diametro 14 e 16 mm. Coppia massima di serraggio 4 Kg·m.

Guide rail bracket (with metal adjustable head) - Part. DX44
Supporto portaguida (con testina orientabile in metallo) - Part. DX44

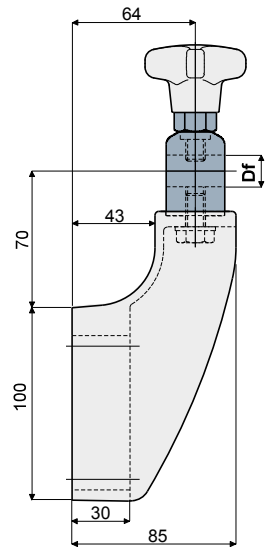


Presetting for drip tray support
Predisposizione per sostegno raccogliitore

La (9 mm)



La (11 mm)



Df
Bore for pin of
Foro per perno da
(mm)

Type/Tipo
DX44A

Code/Codice
CPB00136

Type/Tipo
DX44

Code/Codice
CP000136

14 - 16

MATERIALS: Bracket and knob made out of reinforced polyamide black colour; head made out of stainless steel AISI 304; hexagonal insert made out of nickel plated brass; screw and washer made out of stainless steel AISI 304.
FEATURES: To be used for heavy applications, suitable in conveyors with more ways, both in accumulation and curve. Possibility to use pins with diameter 14 and 16 mm. Max tightening torque 4 Kg·m.

MATERIALI: Supporto e volantino in poliammide rinforzata colore nero; testina in acciaio inox AISI 304; inserto esagonale in ottone nichelato; vite e rosetta in acciaio inox AISI 304.
CARATTERISTICHE: Da utilizzare nelle applicazioni maggiormente sollecitate, consigliato nei nastri a più vie, in accumulo, in curva. Possibilità di utilizzare perni di diametro 14 e 16 mm. Coppia massima di serraggio 4 Kg·m.