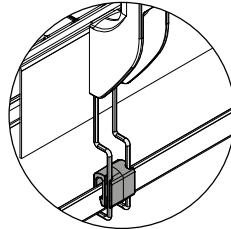
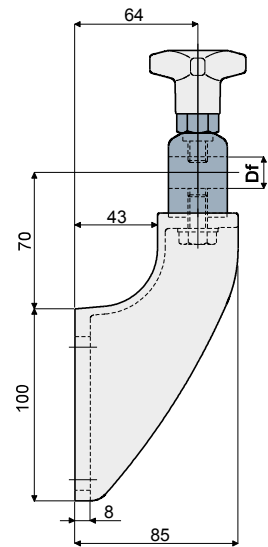
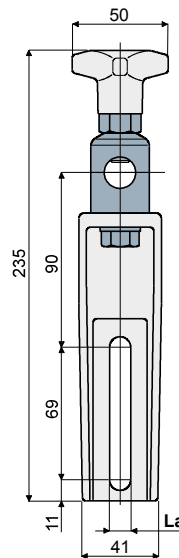


**Guide rail bracket (with metal adjustable head) - Part. DX18**  
**Supporto portaguida (con testina orientabile in metallo) - Part. DX18**



Presetting for drip tray support  
*Predisposizione per sostegno raccogliitore*



La (9 mm)

La (11 mm)

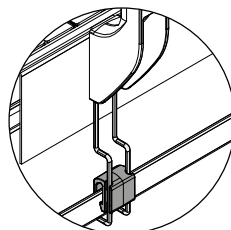
Df  
Bore for pin of  
Foro per perno da  
(mm)

| Type/Tipo | Code/Codice | Type/Tipo | Code/Codice |         |
|-----------|-------------|-----------|-------------|---------|
| DX18A     | CP000132    | DX18B     | CP000134    | 14 - 16 |

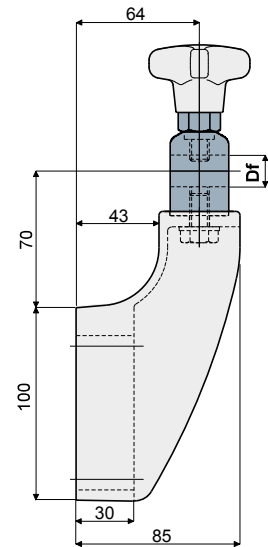
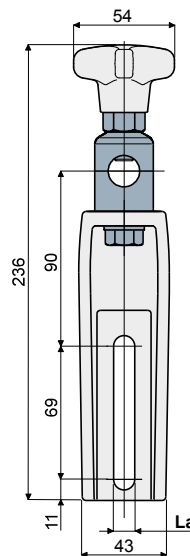
**MATERIALS:** Bracket and knob made out of reinforced polyamide black colour; head made out of stainless steel AISI 304; hexagonal insert made out of nickel plated brass; screw and washer made out of stainless steel AISI 304.  
**FEATURES:** Possibility to use pins with diameter 14 and 16 mm. Max tightening torque 4 Kg·m.

**MATERIALI:** Supporto e volantino in poliammide rinforzata colore nero; testina in acciaio inox AISI 304; inserto esagonale in ottone nichelato; vite e rosetta in acciaio inox AISI 304.  
**CARATTERISTICHE:** Possibilità di utilizzare perni di diametro 14 e 16 mm. Coppia massima di serraggio 4 Kg·m.

**Guide rail bracket (with metal adjustable head) - Part. DX44**  
**Supporto portaguida (con testina orientabile in metallo) - Part. DX44**



Presetting for drip tray support  
*Predisposizione per sostegno raccogliitore*



La (9 mm)

La (11 mm)

Df  
Bore for pin of  
Foro per perno da  
(mm)

| Type/Tipo | Code/Codice | Type/Tipo | Code/Codice |         |
|-----------|-------------|-----------|-------------|---------|
| DX44A     | CPB00136    | DX44      | CP000136    | 14 - 16 |

**MATERIALS:** Bracket and knob made out of reinforced polyamide black colour; head made out of stainless steel AISI 304; hexagonal insert made out of nickel plated brass; screw and washer made out of stainless steel AISI 304.  
**FEATURES:** To be used for heavy applications, suitable in conveyors with more ways, both in accumulation and curve. Possibility to use pins with diameter 14 and 16 mm. Max tightening torque 4 Kg·m.

**MATERIALI:** Supporto e volantino in poliammide rinforzata colore nero; testina in acciaio inox AISI 304; inserto esagonale in ottone nichelato; vite e rosetta in acciaio inox AISI 304.  
**CARATTERISTICHE:** Da utilizzare nelle applicazioni maggiormente sollecitate, consigliato nei nastri a più vie, in accumulo, in curva. Possibilità di utilizzare perni di diametro 14 e 16 mm. Coppia massima di serraggio 4 Kg·m.