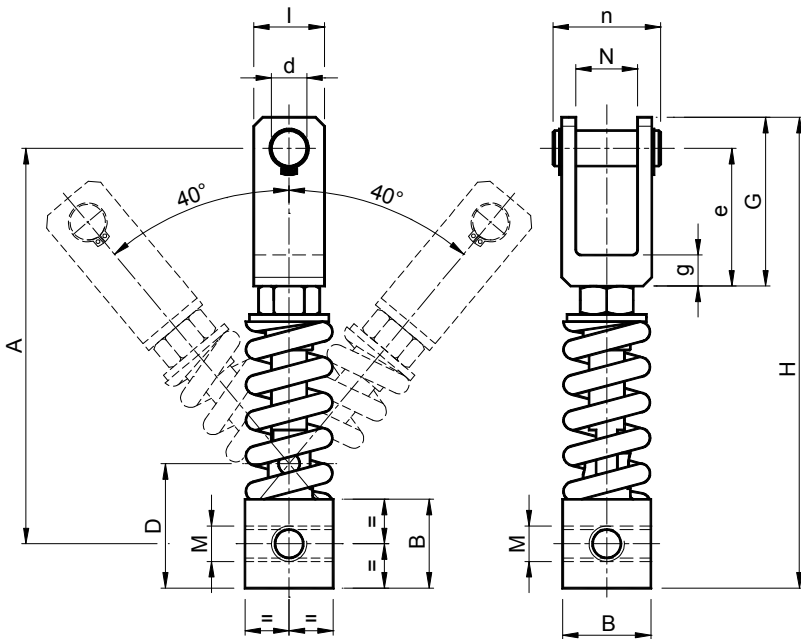


Eléments élastiques **ARCO** – Type: **AF (±40°)** / *ARCO Elastic elements – Type: AF (±40°)*



**MATERIAUX** Acier. La chape peut être en aluminium ou en acier, Goupille de rotation en laiton.

**TRAITEMENTS** Zingage blanc. La chape est sablée ou vernie.

**UTILISATION** Angle de rotation ± 40°.

Température de fonctionnement: de -30°C à +120°C.

**MATERIALS** Steel. The fork can be made of aluminium or steel. Rotation pin made of brass.

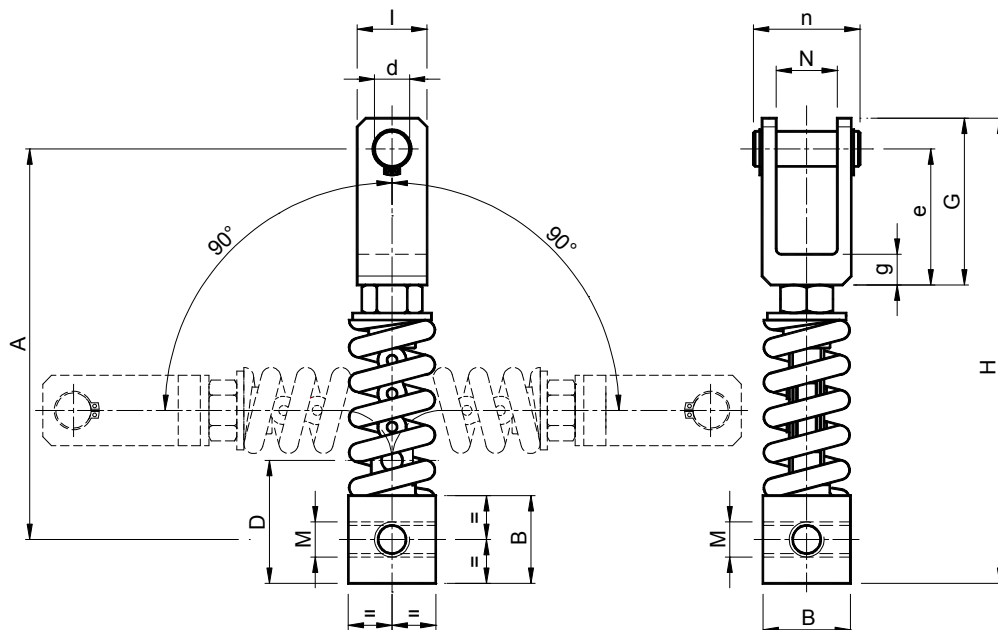
**TREATMENTS** White galvanization. The fork is sandblasted or painted.

**USE** Rotation angle ± 40°.

Working temperature from -30°C to +120°C.

±40°																
Type	Code n°	A	B	D	G	H	I	M	N	d	e	g	n	Newton	Poids	
Type														0 ÷ 40°	Weight	
															Kg	
AF10 S	AR070140	116.5	25	35	75	144	30	M8	19	16	60	15	40	0 ÷ 60	0.33	
AF10 D	AR070145	116.5	25	35	75	144	30	M8	37	16	60	15	60	0 ÷ 60	0.38	
AF20 S	AR070150	139.5	25	35	75	167	30	M10	19	16	60	15	40	0 ÷ 100	0.39	
AF20 D	AR070155	139.5	25	35	75	167	30	M10	37	16	60	15	60	0 ÷ 100	0.44	
AF30 S	AR070160	139.5	25	35	75	167	30	M12	19	16	60	15	40	0 ÷ 190	0.39	
AF30 D	AR070165	139.5	25	35	75	167	30	M12	37	16	60	15	60	0 ÷ 190	0.44	
AF40 S	AR070170	177.5	35	50	85	210	30	M16	19	16	70	15	45	0 ÷ 500	0.83	
AF40 D	AR070175	177.5	35	50	85	210	30	M16	37	16	70	15	65	0 ÷ 500	0.89	
AF50 S	AR070180	222.5	50	70	95	265	40	M20	19	20	77.5	17.5	45	0 ÷ 1100	2.64	
AF50 D	AR070185	222.5	50	70	95	265	40	M20	51	20	77.5	17.5	77	0 ÷ 1100	3.22	
AF60 S	AR070190	290	70	95	125	345	50	M24	34	20	105	20	60	0 ÷ 1800	6.92	
AF60 D	AR070195	290	70	95	125	345	50	M24	85	20	105	20	115	0 ÷ 1800	7.40	

Eléments élastiques – Type: **AFN ( $\pm 90^\circ$ )** / *ARCO Elastic elements – Type: AFN ( $\pm 90^\circ$ )*



**MATERIAUX** Acier. La chape peut être en aluminium ou en acier.

**TRAITEMENTS** Zingage blanc. La chape est sablée ou vernie.

**UTILISATION** Angle de rotation  $\pm 90^\circ$ .

Température de fonctionnement:  $-30^\circ\text{C}$   $+120^\circ\text{C}$ .

**MATERIALS** Steel. The fork can be made of aluminium or steel.

**TREATMENTS** White galvanization. The fork is sandblasted or painted.

**USE** Rotation angle  $\pm 90^\circ$ .

Working temperature from  $-30^\circ\text{C}$  to  $+120^\circ\text{C}$ .



$\pm 90^\circ$

Type Type	Code n°	A	B	D	G	H	I	M	N	d	e	g	n	Newton 0° ÷ 90°	Poids Weight Kg
<b>AFN 10 S</b>	AR070210	116.5	25	35	75	144	30	M8	19	16	60	15	40	0 ÷ 60	0.33
<b>AFN 10 D</b>	AR070215	116.5	25	35	75	144	30	M8	37	16	60	15	60	0 ÷ 60	0.38
<b>AFN 20 S</b>	AR070220	139.5	25	35	75	167	30	M10	19	16	60	15	40	0 ÷ 100	0.39
<b>AFN 20 D</b>	AR070225	139.5	25	35	75	167	30	M10	37	16	60	15	60	0 ÷ 100	0.44
<b>AFN 30 S</b>	AR070230	139.5	25	35	75	167	30	M12	19	16	60	15	40	0 ÷ 190	0.39
<b>AFN 30 D</b>	AR070235	139.5	25	35	75	167	30	M12	37	16	60	15	60	0 ÷ 190	0.44
<b>AFN 40 S</b>	AR070240	177.5	35	50	85	210	30	M16	19	16	70	15	45	0 ÷ 500	0.83
<b>AFN 40 D</b>	AR070245	177.5	35	50	85	210	30	M16	37	16	70	15	65	0 ÷ 500	0.89
<b>AFN 50 S</b>	AR070250	222.5	50	70	95	265	40	M20	19	20	77.5	17.5	45	0 ÷ 1100	2.64
<b>AFN 50 D</b>	AR070255	222.5	50	70	95	265	40	M20	51	20	77.5	17.5	77	0 ÷ 1100	3.22
<b>AFN 60 S</b>	AR070260	290	70	95	125	345	50	M24	34	20	105	20	60	0 ÷ 1800	6.92
<b>AFN 60 D</b>	AR070265	290	70	95	125	345	50	M24	85	20	105	20	115	0 ÷ 1800	7.40