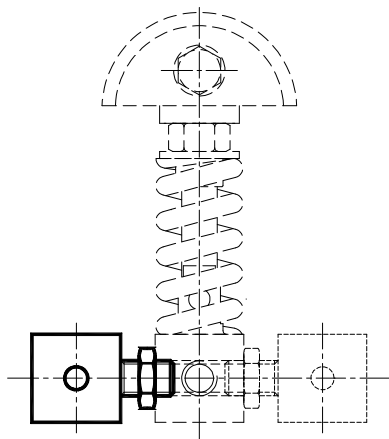
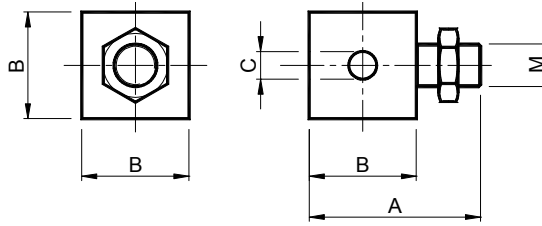


Accessoires / Accessories
Support – Type: B / Support – Type: B



Exemple de montage
Example of installation



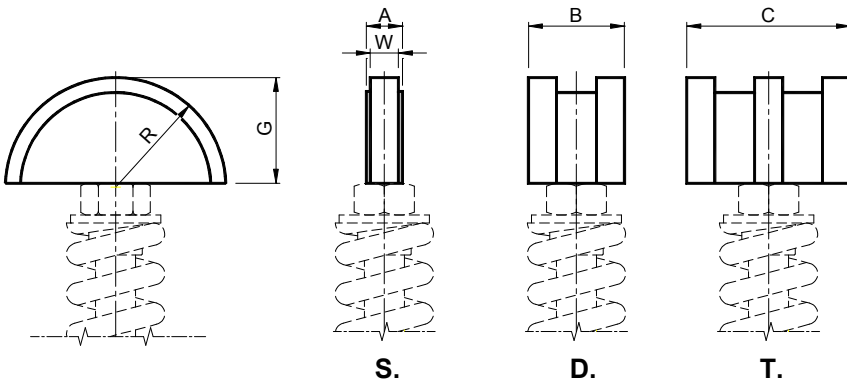
MATERIAUX Acier
TRAITEMENTS Zingage blanc
UTILISATION Accessoire anti-rotation.

MATERIALS Steel.
TREATMENTS White galvanization.
USE Anti-Rotational.



Type	Type	Code n°	A	B	C	M	Poids Weight Kg
B	10/20/30	AR070560	45	25	8.5	M12	0.14
B	40	AR070566	57	35	11	M16	0.38
B	50	AR070568	80	50	13	M20	1.05
B	60	AR070570	10	70	13	M24	2.90

KIT pour tendeurs de chaîne / KIT for chain tighteners
Patin en polyéthylène – Type: V / Polyethylene sliding block – Type: V



MATERIAUX Polyéthylène à haute densité moléculaire.
UTILISATION Profil semi-circulaire pour les petits entraxes ou pour le montage près du pignon.
Vitesse de travail ≤20 m/min.
Température de fonctionnement ≤70°C.

MATERIALS Polyethylene sliding block, high molecular density.
USE Semi-circular profile suitable for reduced interaxis or for installation close to the pinion.
Operating speed ≤20 m/min.
Operating temperature ≤70° C.

Type	S Code n°	D Code n°	T Code n°	Chaîne Chain	Taille Size	A	B	C	G	R	W	Poids Weight Kg		
												S.	D.	T.
V 10-0	TB001060	TB001070		8mm	10	16	16		33	35	2.5	0.03	0.03	
V 10-1	TB001061	TB001071		3/8"x 7/32"	10	16	18		33	35	5	0.03	0.03	
V 20-1			TB001080	3/8"x 7/32"	20			25	33	35	5			0.04
V 20-2	TB001062	TB001072		1/2"x 5/16"	20	16	20.5		33	35	7	0.03	0.03	
V 30-2	TB001062	TB001072	TB001081	1/2"x 5/16"	30	16	20.5	34	33	35	7	0.03	0.04	0.06
V 30-3	TB001063	TB001073		5/8"x 3/8"	30	17	25		43	45	9	0.04	0.08	
V 40-3			AR070628	5/8"x 3/8"	40			42	43	45	9			0.12
V 30-4	TB001064	TB001074		3/4"x 7/16"	30	17	30		43	45	11	0.05	0.09	
V 40-4		AR070620	AR070630	3/4"x 7/16"	40		30	49	43	45	11		0.09	0.14
V 40-5	AR040616	AR070622	AR070632	1" x 17.02mm	40	18	47	79.5	53	55	16	0.08	0.20	0.32