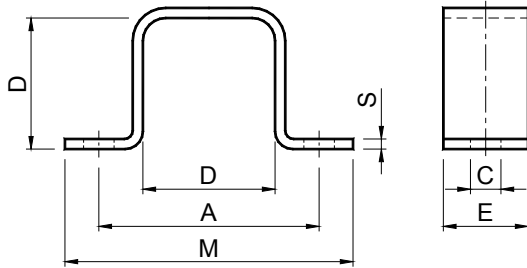


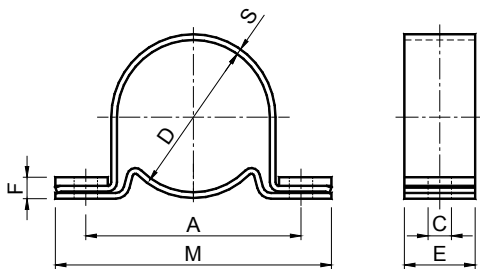



Accessories **VIB** / Accessori **VIB**Type: **SR** / Tipo: **SR**


 **MATERIALS** Clamp is made of steel.  
**TREATMENTS** Clamp is oven-painted.

 **MATERIALI** La staffa è in acciaio.  
**TRATTAMENTI** La staffa è verniciata a forno.

Type Tipo	Cod. N°	A	ØC	D	E	M	S	Weight Peso in [kg]
<b>SR 10</b>	RE020450	37	6	20	20	50	2,0	0,04
<b>SR 20</b>	RE020451	50	7	27	25	65	2,0	0,05
<b>SR 30</b>	RE020452	60	9	32	30	80	2,5	0,11
<b>SR 40</b>	RE020453	80	11	45	35	105	3,0	0,18
<b>SR 50</b>	RE020454	100	13	60	40	125	4,0	0,31
<b>SR 60</b>	RE020455	115	13	72	45	145	5,0	0,49
<b>SR 60 G</b>	RE020458	120	13	75	45	150	5,0	0,50
<b>SR 70</b>	RE020456	130	18	78	50	170	6,0	0,71
<b>SR 70 G</b>	RE020459	135	18	80	50	175	6,0	0,72

Type: **SC** / Tipo: **SC**

 **MATERIALS** Clamp is made of steel.  
**TREATMENTS** Clamp is oven-painted.

 **MATERIALI** La staffa è in acciaio.  
**TRATTAMENTI** La staffa è verniciata a forno.

Type Tipo	Cod. N°	A	ØC	ØD	E	F	M	S	Weight Peso in [kg]
<b>SC 10</b>	RE020460	45	6,5	28	20	6	60	1,5	0,05
<b>SC 20</b>	RE020461	55	6,5	36	25	7	75	2,0	0,11
<b>SC 30</b>	RE020462	68	8,5	45	30	8	90	2,0	0,16
<b>SC 40</b>	RE020463	92	10,5	62	35	10	125	2,5	0,31
<b>SC 50</b>	RE020464	115	12,5	80	40	11	150	3,0	0,48
<b>SC 60</b>	RE020465	130	12,5	95	45	13	165	3,5	0,72
<b>SC 70</b>	RE020466	152	16,5	108	50	15	195	4,0	0,96

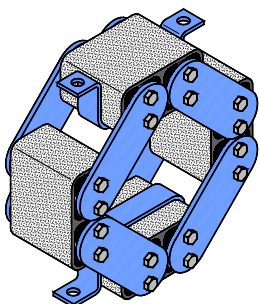


fig. 1

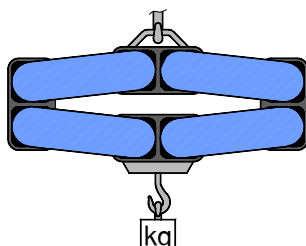




fig. 2

 Application example:  
fig. 1 elastic suspension  
fig. 2 elastic support for suspended loads

 Esempio di applicazione:  
fig. 1 sospensione elastica  
fig. 2 supporto elastico per carichi sospesi

Type **AD-P** with clamps  
Tipo **AD-P** con staffe