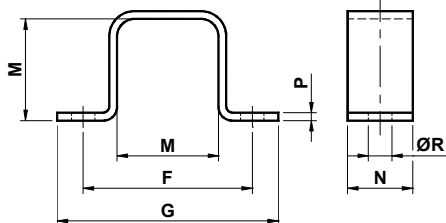


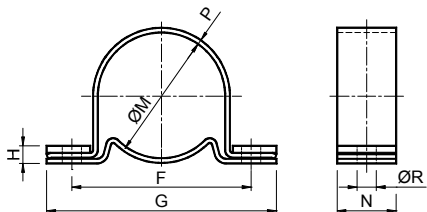
Bride de support SR(SU) / SR(SU) Clamp



| Type Type | Code n° | F | G | M | N | P | R | Poids Weight [kg] |
|--------------|----------|-----|-----|----|----|-----|----|-------------------------|
| SR 10 | RE020450 | 37 | 50 | 20 | 20 | 2 | 6 | 0.04 |
| SU 111 | CE071780 | | | | | | | |
| SR 20 | RE020451 | 50 | 65 | 27 | 25 | 2 | 7 | 0.05 |
| SU 215 | CE071781 | | | | | | | |
| SR 30 | RE020452 | 60 | 80 | 32 | 30 | 2.5 | 9 | 0.11 |
| SU 318 | CE071782 | | | | | | | |
| SR 40 | RE020453 | 80 | 105 | 45 | 35 | 3 | 11 | 0.18 |
| SU 427 | CE071783 | | | | | | | |
| SR 50 | RE020454 | 100 | 125 | 60 | 40 | 4 | 13 | 0.31 |
| SU 538 | CE071784 | | | | | | | |
| SR 60 | RE020455 | 115 | 145 | 72 | 45 | 5 | 13 | 0.49 |
| SU 645 | CE071785 | | | | | | | |
| SR 70 | RE020456 | 130 | 170 | 78 | 50 | 6 | 18 | 0.71 |
| SU 750 | CE071786 | | | | | | | |

Bride en acier verni, particulièrement indiquée pour fixer tous les éléments élastiques du type AR-(BC-) et DE(CO).
Oven-painted clamp, particularly suitable to fix all the elastic elements type AR-(BC-) and DE(CO).

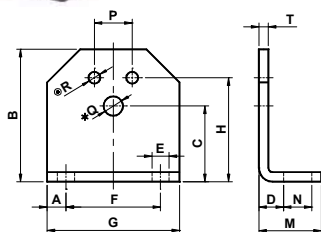
Bride de support ST / ST Clamp



| Type Type | Code n° | F | G | H | M | N | P | R | Poids Weight [kg] |
|--------------|----------|-----|-----|----|-----|----|-----|------|-------------------------|
| SC 10 | RE020460 | 45 | 60 | 6 | 28 | 20 | 1.5 | 6.5 | 0.05 |
| ST 111 | CE071795 | | | | | | | | |
| SC 20 | RE020461 | 55 | 75 | 7 | 36 | 25 | 2 | 6.5 | 0.11 |
| ST 215 | CE071796 | | | | | | | | |
| SC 30 | RE020462 | 68 | 90 | 8 | 45 | 30 | 2 | 8.5 | 0.16 |
| ST 318 | CE071797 | | | | | | | | |
| SC 40 | RE020463 | 92 | 125 | 10 | 62 | 35 | 2.5 | 10.5 | 0.31 |
| ST 427 | CE071798 | | | | | | | | |
| SC 50 | RE020464 | 115 | 150 | 11 | 80 | 40 | 3 | 12.5 | 0.48 |
| ST 538 | CE071799 | | | | | | | | |
| SC 60 | RE020465 | 130 | 165 | 13 | 95 | 45 | 3.5 | 12.5 | 0.72 |
| ST 645 | CE071800 | | | | | | | | |
| SC 70 | RE020466 | 152 | 195 | 15 | 108 | 50 | 4 | 16.5 | 0.96 |
| ST 750 | CE071801 | | | | | | | | |

Bride en acier verni, particulièrement indiquée pour fixer tous les éléments élastiques du type AC-(BG-).
Oven-painted clamp, particularly suitable to fix all the elastic elements type AC-(BG-).

Brides de support SL / SL Support



| Type Type | Code n° | A | B | C | D | E | F | G | H | M | N | P | T | * Ⓢ | | Poids Weight [kg] | | |
|--------------|----------|------|-----|----|------|------|-----|-----|-----|----|------|----|----|---------------------|---------------------|-------------------------|------|------|
| | | | | | | | | | | | | | | Taille Size Q | Taille Size R | | | |
| SB 10 | RE020510 | 7.5 | 46 | 27 | 11.5 | 7 | 30 | 45 | 35 | 30 | 13 | 10 | 4 | 111 | 6.5 | 215 | 5.5 | 0.09 |
| SL 111 | CE071870 | | | | | | | | | | | | | | | | | |
| SB 20 | RE020511 | 7.5 | 58 | 34 | 13.5 | 7 | 40 | 55 | 44 | 32 | 13 | 12 | 5 | 215 | 8.5 | 318 | 6.5 | 0.17 |
| SL 215 | CE071871 | | | | | | | | | | | | | | | | | |
| SB 30 | RE020512 | 10 | 74 | 43 | 16.5 | 9.5 | 50 | 70 | 55 | 38 | 15.5 | 20 | 6 | 318 | 10.5 | 427 | 8.5 | 0.29 |
| SL 318 | CE071872 | | | | | | | | | | | | | | | | | |
| SB 40 | RE020513 | 12.5 | 98 | 57 | 21 | 11.5 | 65 | 90 | 75 | 52 | 21.5 | 25 | 8 | 427 | 12.5 | 538 | 10.5 | 0.72 |
| SL 427 | CE071873 | | | | | | | | | | | | | | | | | |
| SB 50 | RE020514 | 15 | 116 | 66 | 21 | 14 | 80 | 110 | 85 | 55 | 24 | 35 | 8 | 538 | 16.5 | 645 | 12.5 | 0.93 |
| SL 538 | CE071874 | | | | | | | | | | | | | | | | | |
| SB 60 | RE020515 | 20 | 140 | 80 | 26 | 18 | 100 | 140 | 110 | 66 | 30 | 40 | 10 | 645 | 20.5 | 750 | 12.5 | 1.82 |
| SL 645 | CE071875 | | | | | | | | | | | | | | | | | |

* Le trou Q est utilisé pour le montage des TENDEURS du type CRESA – CIAO : RE(CE), FE(VE), CEA(TQ), CEB(BQ), PX, PX-R.
Q hole is used for the assembly of the TENSIONERS type CRESA – CIAO : RE(CE), FE(VE), CEA(TQ), CEB(BQ), PX, PX-R.

Ⓢ Les trous R sont utilisés pour le montage des ELEMENTS ELASTIQUES VIB du type : AR-P(BC-E), AC-P(BG-E), AD-P(BD-E), TB(TB-E), CR-P(GI-E)

Bride en acier verni avec des trous qui permettent de l'utiliser aussi bien comme support orthogonal pour les tendeurs que comme bride pour les éléments élastiques. Le trou Q est utilisé pour fixer les tendeurs (page 17), tandis que les deux trous R sont utilisés pour fixer le pivot central en aluminium des éléments élastiques indiqués ci-haut.

Oven-painted support, which has the holes that allow to use it both as orthogonal support for the tensioners and as bracket for the elastic elements. The Q hole is used for the fixing of the tensioners (page 17), while the two R holes are used for the fixing of the central aluminium pin of the elastic elements under mentioned.