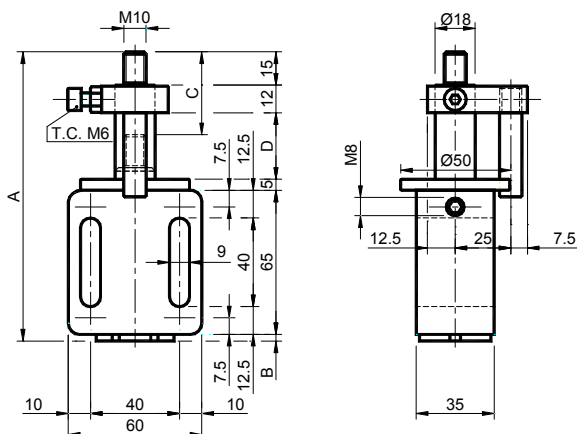


Elementi elastici a molla "antirrotazione" TEN BLOC – Tipo: TBA
TEN BLOC Elastic spring elements "anti-rotation" – Type: TBA

TBA 10/20/30



MATERIALI Corpo in alluminio con bronza in ottone. Collare in ottone. Colonna, tappo, cilindri, piastrina, piolo, vite e molla in acciaio.

TRATTAMENTI Alluminio sabbiato, particolari in acciaio zincato, molla grezza oleata.

IMPIEGO Elemento Elastico a molla "antirrotazione". Il recupero dei giochi della catena o della cinghia avviene in modo automatico mediante l'azione della molla. La designazione "antirrotazione" indica che la colonna, una volta messa in posizione, non è più libera di ruotare sui 360°.

C: Corsa del tenditore



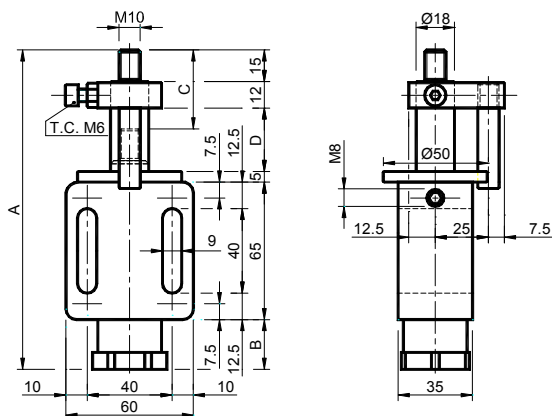
MATERIALS Body made of aluminium with brushing made of brass. Collar made of brass. Column, cap, cylinders, plate, stake, screw and spring made of steel.

TREATMENTS Sandblasted aluminium, components made of galvanized steel, greased raw spring.

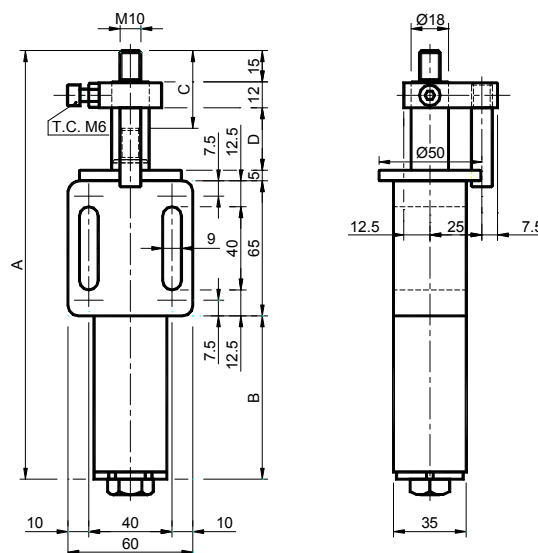
USE Elastic spring Element "anti-rotation". The recover of chain- or belt- slack takes place automatically through the spring action. The word "anti-rotation" means that the column, when it is positioned, it isn't no more free to rotate to 360°.

C: Tensioner travel

TBA 40



TBAP 50/60/70/80/90



Tipo Type	Cod. N°	A	B	C	D	Newton	Peso Weight in kg
TBA 10	TB013100	130.5	3.5	30	30	30 ÷ 100	0.58
TBA 20	TB013101	130.5	3.5	29	30	60 ÷ 170	0.58
TBA 30	TB013102	130.5	3.5	28	30	90 ÷ 250	0.58
TBA 40	TB013103	152.0	25.0	30	30	100 ÷ 400	0.65
TBAP 50	TB013104	165.5	38.5	27	30	180 ÷ 700	0.80
TBAP 60	TB013105	200.5	73.5	30	30	220 ÷ 1000	0.98
TBAP 70	TB013106	215.5	88.5	30	30	340 ÷ 1500	1.10
TBAP 80	TB013107	250.5	93.5	30	30	400 ÷ 2000	1.20
TBAP 90	TB013108	270.5	143.5	30	30	500 ÷ 2500	1.40

