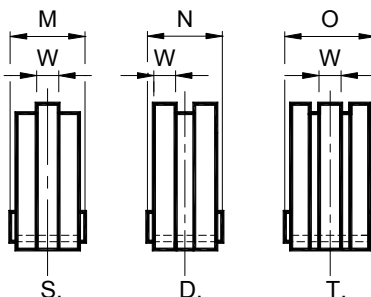
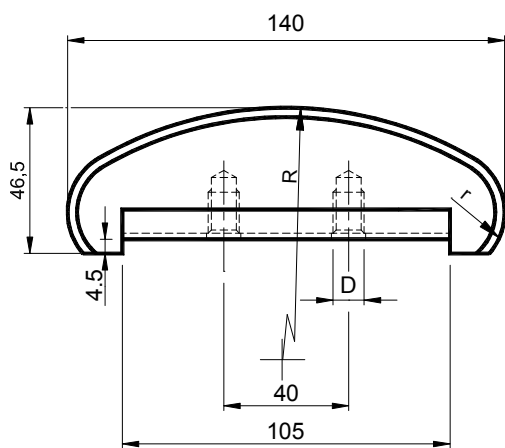


KIT per tendicatena / KIT for chain tensioners

Pattino in polietilene – Tipo: **V80** / Polyethylene sliding block – Type: **V80**

Solo per Elementi Elastici Ten Bloc – Tipo: **TB80A/F**

For the Elastic Elements Ten Bloc only – Type: **TB80A/F**



MATERIALI Pattino in polietilene ad alta densità molecolare, completo di profilo di rigidità in acciaio sagomato.

IMPIEGO Profilo semicircolare indicato per grandi interassi

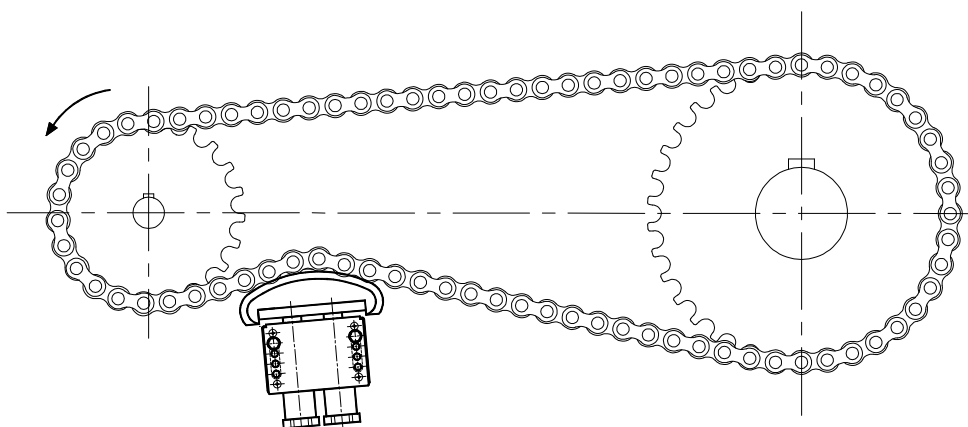
Velocità di lavoro ≤20 m/min.
Temperatura di lavoro ≤70°C.

MATERIALS Sliding block made of polyethylene, high molecular density, with steel profile stiffness.

USE Semicircular profile wide-ranging indicated for large distances between centres.

Operating speed ≤20 m/min.
Operating temperature ≤70°C.

Tipo Type	S Cod. N°	D Cod. N°	T Cod. N°	Catena Chain	r	R	W	M	N	O	D	Peso Weight in kg		
												S.	D.	T.
V80 10-0	TB013300	TB013310	TB013320	8mm	20	120	2.5	24	24	24	M10	0.13	0.14	0.15
V80 10-1	TB013301	TB013311	TB013321	3/8" x 7/32"	20	120	5	24	24	29	M10	0.14	0.14	0.16
V80 20-1	TB013301	TB013311	TB013321	3/8" x 7/32"	20	120	5	24	24	29	M10	0.14	0.14	0.16
V80 10-2	TB013302	TB013312	TB013322	1/2" x 5/16"	20	120	7	24	24	39	M10	0.14	0.14	0.16
V80 20-2	TB013302	TB013312	TB013322	1/2" x 5/16"	20	120	7	24	24	39	M10	0.14	0.14	0.16
V80 30-2	TB013302	TB013312	TB013322	1/2" x 5/16"	20	120	7	24	24	39	M10	0.14	0.14	0.16
V80 30-3	TB013303	TB013313	TB013323	5/8" x 3/8"	20	140	9	24	29	44	M10	0.16	0.18	0.36
V80 40-3	TB013303	TB013313	TB013323	5/8" x 3/8"	20	140	9	24	29	44	M10	0.16	0.18	0.36
V80 30-4	TB013304	TB013314	TB013324	3/4" x 7/16"	20	140	11	24	34	54	M10	0.18	0.33	0.41
V80 40-4	TB013304	TB013314	TB013324	3/4" x 7/16"	20	140	11	24	34	54	M10	0.18	0.33	0.41
V80 30-5	TB013305	TB013315	TB013325	1" x 17.02mm	20	160	16	29	49	84	M10	0.26	0.56	0.86
V80 40-5	TB013305	TB013315	TB013325	1" x 17.02mm	20	160	16	29	49	84	M10	0.26	0.56	0.86
V80 40-6	TB013306	TB013316	TB013326	1"1/4 x 3/4"	20	160	18	29	59	94	M10	0.26	0.60	0.90
V80 40-7	TB013307	TB013317	TB013327	1"1/2 x 1"	20	160	24	29	74	124	M10	0.30	0.70	1.00



Esempio di applicazione
Application example

