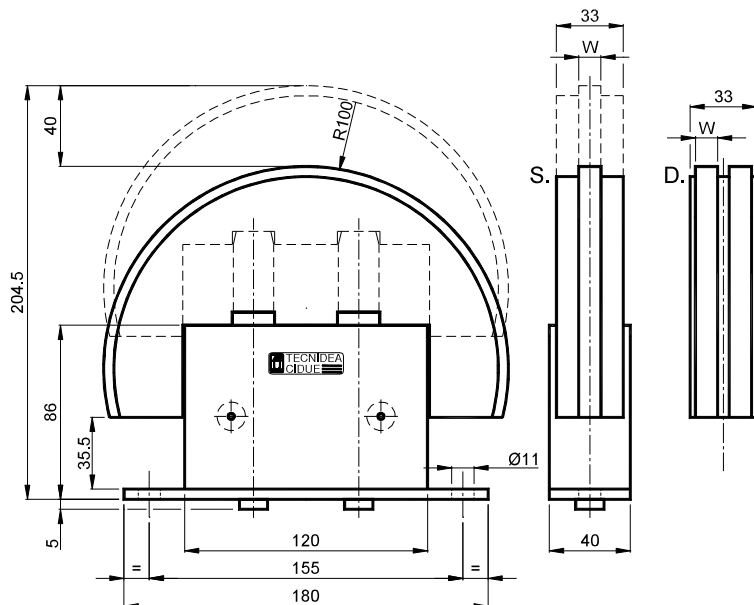


Type **BBZBR – BBXBR** / Tipo **BBZBR – BBXBR**









 Tensioners are made by BB elastic element and BR sliding block.

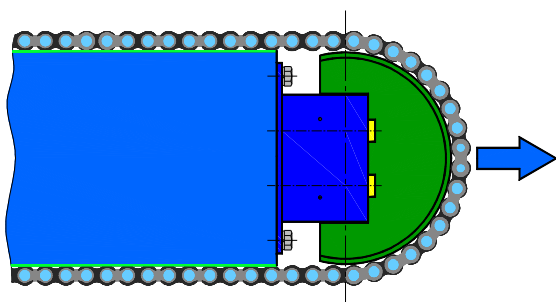
Tensioners BBZBR are available with galvanized springs and BBXBR types with stainless steel springs; load values are indicated on page I-30. Travel is 40mm.

 I tenditori sono composti dall'elemento elastico BB e la testa BR.

I tenditori BBZBR sono disponibili con molle in acciaio zincato ed i tipi BBXBR con molle in acciaio inox; i valori di carico sono riportati a pag I-30. La corsa è di 40mm.

		Zinc plated springs / Molle zincate				Stainless steel springs / Molle inox				
Chain Catena DIN 8187 ISO Pitch		BBZ+BR	BBZ	BR		BBX	BBX+BR			
					W					
12-B1	3/4"x7/16"	BB20ZBR4S	BB 20 Z	BL010622	BR 4 S	BL010744	11	BB 20 X	BL011632	BB20XBR4S
12-B1	3/4"x7/16"	BB30ZBR4S	BB 30 Z	BL010624	BR 4 S	BL010744	11	BB 30 X	BL011634	BB30XBR4S
16-B1	1"x17.02mm	BB30ZBR5S	BB 30 Z	BL010624	BR 5 S	BL010745	16	BB 30 X	BL011634	BB30XBR5S
16-B1	1"x17.02mm	BB40ZBR5S	BB 40 Z	BL010626	BR 5 S	BL010745	16	BB 40 X	BL011636	BB40XBR5S
20-B1	1"1/4x3/4"	BB30ZBR6S	BB 30 Z	BL010624	BR 6 S	BL010746	18	BB 30 X	BL011634	BB30XBR6S
20-B1	1"1/4x3/4"	BB40ZBR6S	BB 40 Z	BL010626	BR 6 S	BL010746	18	BB 40 X	BL011636	BB40XBR6S
08-B2	1/2"x5/16"	BB20ZBR2D	BB 20 Z	BL010622	BR 2 D	BL010752	7	BB 20 X	BL011632	BB20XBR2D
10-B2	5/8"x3/8"	BB20ZBR3D	BB 20 Z	BL010622	BR 3 D	BL010753	9	BB 20 X	BL011632	BB20XBR3D
10-B2	5/8"x3/8"	BB30ZBR3D	BB 30 Z	BL010624	BR 3 D	BL010753	9	BB 30 X	BL011634	BB30XBR3D
12-B2	3/4"x7/16"	BB30ZBR4D	BB 30 Z	BL010624	BR 4 D	BL010754	11	BB 30 X	BL011634	BB30XBR4D

Tensioners for triple chain are provided on request only. / I tenditori per catena tripla si forniscono solo su richiesta.



Example of application
Esempio di applicazione